

LEA Name : Coatesville Area SD  
Address : 3030 CG Zinn Rd  
Thorndale , PA 19372

County : Chester  
AUN Number : 124151902  
LEA Type : SD

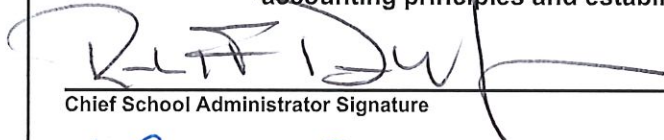
## Annual Financial Report Accuracy Certification Statement


For Fiscal Year Ending  
6/30/2022

Pennsylvania Department of Education  
&  
Office of Comptroller Operations

PDE-2056: Intermediate Unit  
PDE-2057: School District, AVTS/CTC, Charter School,  
and Special Program Jointure

**CERTIFICATION: By signing this page I agree that the electronic data submitted is a complete and accurate statement of the financial operations and status of the local education agency for the fiscal year. It has been prepared in accordance with generally accepted accounting principles and established Commonwealth of PA reporting guidelines.**

  
\_\_\_\_\_  
Chief School Administrator Signature

  
\_\_\_\_\_  
Board Secretary Signature

12/19/2022  
Date

12/19/2022  
Date

Pamela Kiley

\_\_\_\_\_  
Contact Person

kileyp@casdschools.org

\_\_\_\_\_  
Contact Person E-mail Address

(610)466-2400

Ext :82481

\_\_\_\_\_  
Contact Person Telephone Number

\_\_\_\_\_  
Contact Person Fax Number

**Audit Certification**  
**Annual Financial Report:**  
For Fiscal Year Ending **6/30/2022**  
**(Pursuant to PA School Code Section 218(b))**

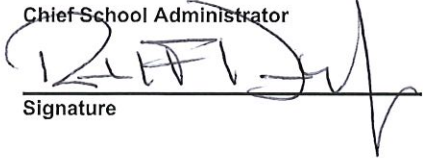
LEA Name : Coatesville Area SD  
AUN Number : 124151902  
County : Chester

<b>Audit Certification Due:</b> 12/31/2022
---

This certification is applicable to the Annual Financial Report data submitted through the Consolidated Financial Reporting System (CFRS).

CERTIFICATION: By signing this page I agree that the financial statements of the school have been properly audited as noted above pursuant to Article XXIV, and in the auditor's professional opinion, the Annual Financial Report (PDE-2057) submitted through CFRS is materially consistent with the audited financial statements.

Chief School Administrator

  
Signature

12/19/2022  
Date

Board Secretary

  
Signature

12/19/2022  
Date

Pamela Kiley

\_\_\_\_\_  
Contact Person

kileyp@casdschools.org

\_\_\_\_\_  
Contact Person E-mail Address

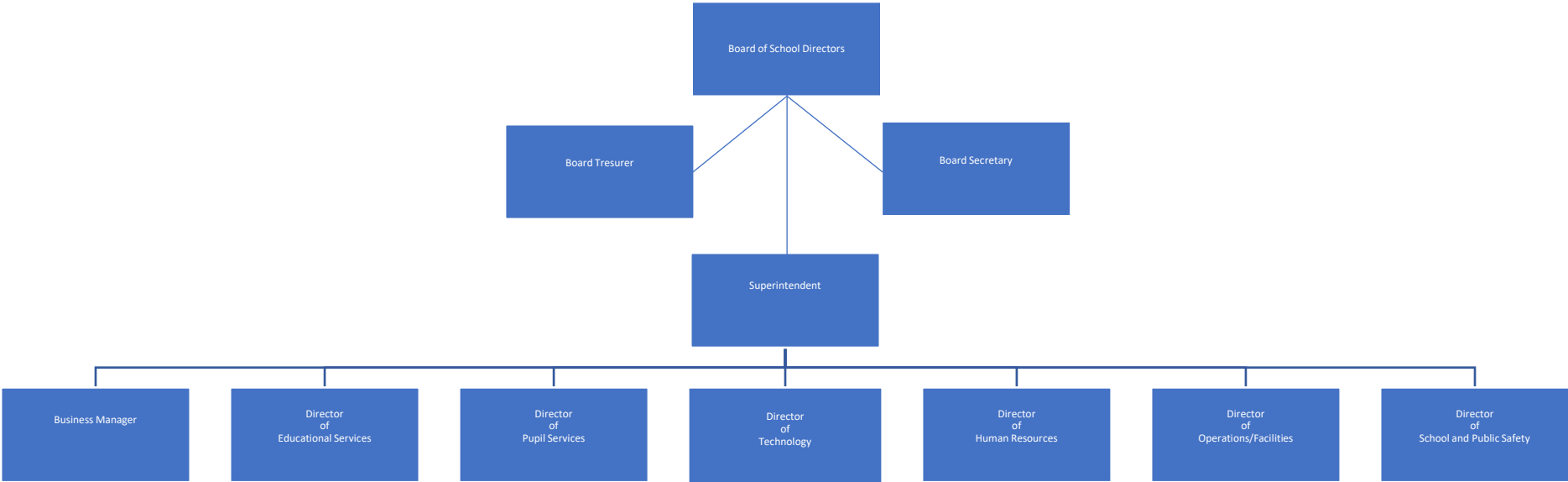
(610)466-2400

Ext :82481

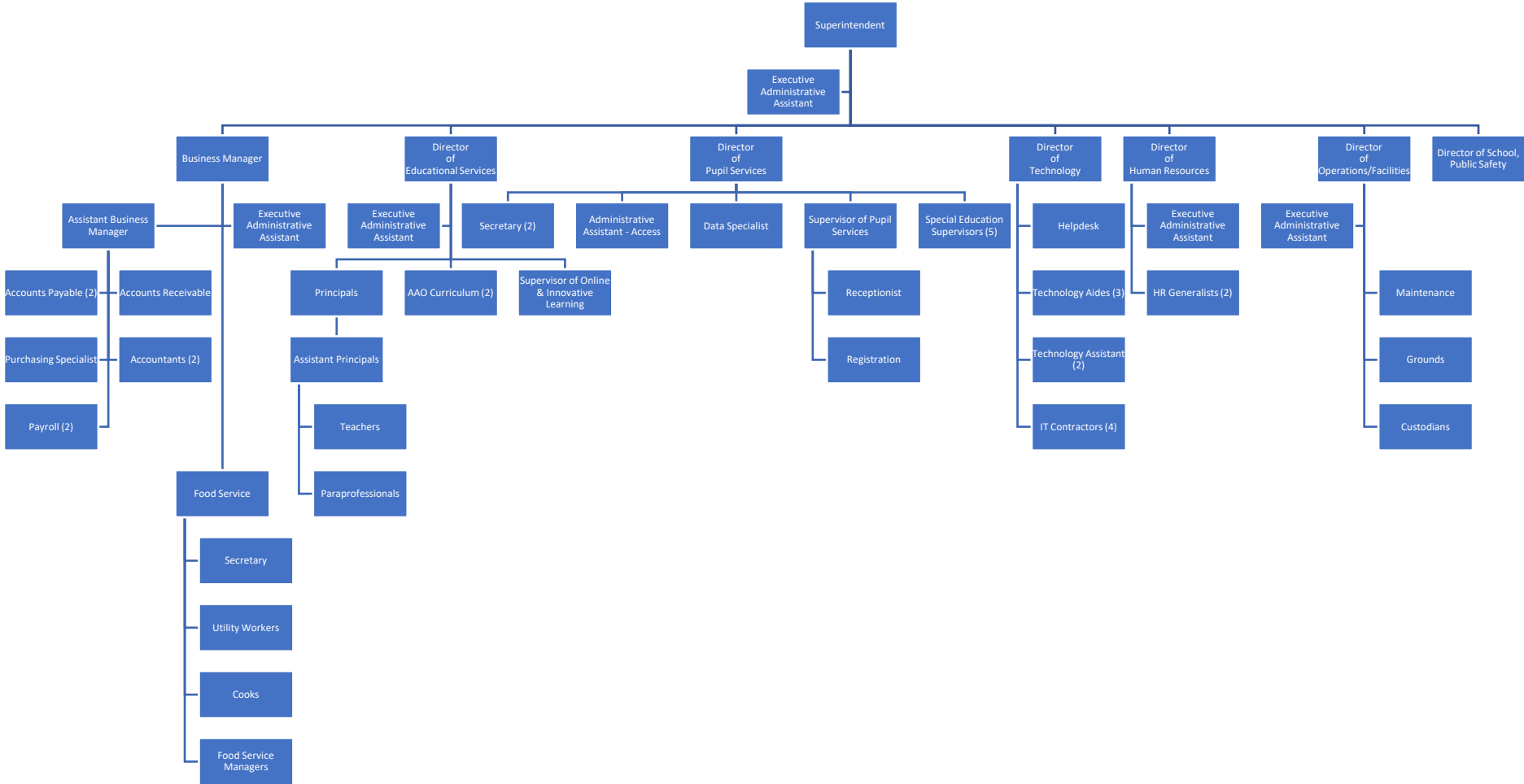
\_\_\_\_\_  
Contact Person Telephone Number

\_\_\_\_\_  
Contact Person Fax Number

# Coatesville Area School District Organizational Chart



# Coatesville Area School District Organizational Chart



Book	Policy Manual
Section	600 Finances
Title	Purchases Subject to Bid/Quotation
Code	610
Status	Active
Adopted	June 27, 2017

### **Authority**

It is the policy of the Board to obtain competitive bids and price quotations for products and services where such bids or quotations are required by law or may result in monetary savings to the school district. [\[1\]](#)[\[2\]](#)

### **Guidelines**

The amounts contained in this policy regarding competitive bid and price quotation requirements are subject to adjustments based on the Consumer Price Index. [\[1\]](#)[\[2\]](#)[\[3\]](#)

### **Competitive Bids**

When seeking competitive bids, the Board shall advertise once a week for three (3) weeks in not less than two (2) newspapers of general circulation. [\[1\]](#)[\[2\]](#)

After due public notice advertising for competitive bids, the Board shall be authorized to:

1. Purchase furniture, equipment, school supplies and appliances costing a base amount of \$19,400 or more, unless exempt by law. [\[2\]](#)
2. Contract for construction, reconstruction, repairs, maintenance or work on any school building or property having a total cost or value of more than \$19,400, unless exempt by law. [\[1\]](#)

The Board prohibits the practice of splitting purchases to avoid advertising and bidding requirements. [\[1\]](#)[\[2\]](#)

With kind, quality and material being equal, the bid of the lowest responsible bidder meeting bid specifications shall be accepted upon resolution of the Board, unless the Board chooses to reject all bids. [\[1\]](#)[\[2\]](#)

The Board recognizes that emergencies may occur when imminent danger exists to persons or property or continuance of existing school classes is threatened, and time for bidding cannot be provided because of the need for immediate action. Bidding decisions in the event of such emergencies shall be made in accordance with existing legal requirements. [\[1\]](#)

### **Price Quotations**

Unless exempt by law, at least three (3) written or telephonic price quotations shall be requested by the Board for: [\[1\]](#)[\[2\]](#)

1. Furniture, equipment, school supplies and appliances costing a base amount of more than \$10,500 but less than \$19,400. [\[2\]](#)
2. All contracts for construction, reconstruction, repairs, maintenance or work on any school building or property, having a total cost or value of more than \$10,500 but less than \$19,400. [\[1\]](#)

If it is not possible to obtain three (3) quotations, a memorandum must be kept on file showing that fewer than three (3) qualified vendors exist in the market area. The written price quotations, written records of telephonic price quotations and memoranda shall be kept on file for three (3) years.

### **Work Performed by District Maintenance Personnel**

The Board may authorize district maintenance personnel to perform construction, reconstruction, repairs or work having a total cost or value of less than \$10,500. [\[1\]](#)

## **Delegation of Responsibility**

The Board may grant the Board Secretary or Purchasing Agent the authority to purchase supplies and award contracts in the amount and manner designated by applicable law.[\[1\]](#)[\[2\]](#)

- Legal
1. 24 P.S. 751
  2. 24 P.S. 807.1
  3. 24 P.S. 120
- 62 Pa. C.S.A. 4601 et seq

<u>Val Number</u>	<u>Description</u>	<u>Justification</u>
16230	<p>REP Fund 51 – Net Position - Beginning of Fiscal Year must equal Prior Year AFR, Net Position - End of Year. Justifications to this error must fully explain the situation that prompted a fund balance restatement. "Auditor Adjustment" is not a sufficient justification.</p> <p>REP Fund 51 – Net Position - Beginning of Fiscal Year: \$-2,376,352.00            REP Fund 51, Prior Year AFR, Net Position - End of Year: \$-2,417,550.00</p>	<p>Net position beginning of fiscal year is correct and matches audit report. Person who did AFR last year understated Net Machinery &amp; Equipment by \$41,198. Reported \$13,665; s/b \$54,863.</p>
42420	<p>Expenditure Detail: Total current year 2700-513 expenditure varies from prior year by 10%. Correct the data or enter a justification.</p> <p>2700-513, AFR Exp Detail: \$9,909,557.20            2700-513, PY AFR Amount: \$8,187,990.96</p>	<p>In 20-21 we were still dealing with COVID- paying our contractor 65% of our daily rate for buses not utilized. In 21-22 we are back to our normal schedule. Due to driver shortages buses are running additional hours. Still paying 65% in buses not utilized.</p>
50160	<p>SOIN: All Governmental Fund General Obligation Bonds must include an amount for Interest Paid during Fiscal Year. Correct data or enter a justification.</p>	<p>The G.O. Bonds/Notes Series 2020A thru 2020D did not have any interest payments due in 2021-2022.</p>
50180	<p>SOIN: All Governmental Fund General Obligation Bonds must include an amount for Amount Due Within One Year (Principal and Interest). Correct data or enter a justification.</p>	<p>The G.O. Bonds/Notes Series 2020A thru 2020D have a delayed repayment schedule. Series 2020D will begin repayment in 2023. Series 2020A thru 2020C will begin repayment in 2034 &amp; 2035.</p>

Amounts Expressed in Whole Dollars	<u>General Fund</u> <u>(10)</u>	<u>Student Sponsored</u> <u>Activity Fund</u> <u>(21)</u>	<u>Public Purpose Trust</u> <u>(27)</u>	<u>Other Compt Approved</u> <u>(28)</u>	<u>Athletic / Activity</u> <u>(29)</u>
<b>Assets And Deferred Outflows Of Resources</b>					
<b>Assets</b>					
0100 Cash and Cash Equivalents	25,818,443				
0110 Investments					
0120 Taxes Receivable	7,235,520				
0130 Due From Other Funds	1,936				
0141 Due From Other Governments	2,024,983				
0142 State Revenue Receivable	3,842,969				
0143 Federal Revenue Receivable	1,941,628				
0145 Other Intergovernmental Revenue Receivable					
0146 Due from Primary Government					
0147 Due from Component Unit					
0150 Other Receivables	145,103				
0170 Inventories					
0180 Prepaid Expenses (Expenditures)	66,054				
0190 Other Current Assets	354,000				
<b>Total Assets</b>	<b>\$41,430,636</b>				
0910 Deferred Outflows of Resources					
<b>Total Assets And Deferred Outflows Of Resources</b>	<b>\$41,430,636</b>				



Amounts Expressed in Whole Dollars	<u>Capital Reserve (690.</u> <u>1850)</u> <u>(31)</u>	<u>Capital Reserve (1431)</u> <u>(32)</u>	<u>Other Capital Projects</u> <u>Fund</u> <u>(39)</u>	<u>Debt Service</u> <u>(40)</u>	<u>Permanent</u> <u>(90)</u>
<b>Assets And Deferred Outflows Of Resources</b>					
<b>Assets</b>					
0100 Cash and Cash Equivalents		754,190	17,575,061		
0110 Investments					
0120 Taxes Receivable					
0130 Due From Other Funds					
0141 Due From Other Governments					
0142 State Revenue Receivable					
0143 Federal Revenue Receivable					
0145 Other Intergovernmental Revenue Receivable					
0146 Due from Primary Government					
0147 Due from Component Unit					
0150 Other Receivables					
0170 Inventories					
0180 Prepaid Expenses (Expenditures)					
0190 Other Current Assets					
<b>Total Assets</b>		<b>\$754,190</b>	<b>\$17,575,061</b>		
0910 Deferred Outflows of Resources					
<b>Total Assets And Deferred Outflows Of Resources</b>		<b>\$754,190</b>	<b>\$17,575,061</b>		

Amounts Expressed in Whole Dollars	<u>Total Governmental Funds</u>
<b>Assets And Deferred Outflows Of Resources</b>	
<b>Assets</b>	
0100 Cash and Cash Equivalents	44,147,694
0110 Investments	
0120 Taxes Receivable	7,235,520
0130 Due From Other Funds	1,936
0141 Due From Other Governments	2,024,983
0142 State Revenue Receivable	3,842,969
0143 Federal Revenue Receivable	1,941,628
0145 Other Intergovernmental Revenue Receivable	
0146 Due from Primary Government	
0147 Due from Component Unit	
0150 Other Receivables	145,103
0170 Inventories	
0180 Prepaid Expenses (Expenditures)	66,054
0190 Other Current Assets	354,000
<b>Total Assets</b>	<b>\$59,759,887</b>
0910 Deferred Outflows of Resources	
<b>Total Assets And Deferred Outflows Of Resources</b>	<b>\$59,759,887</b>

Amounts Expressed in Whole Dollars	<u>General Fund</u> <u>(10)</u>	<u>Student Sponsored</u> <u>Activity Fund</u> <u>(21)</u>	<u>Public Purpose Trust</u> <u>(27)</u>	<u>Other Compt Approved</u> <u>(28)</u>	<u>Athletic / Activity</u> <u>(29)</u>
<b>Liabilities And Deferred Inflows Of Resources And Fund Balances</b>					
<b>Liabilities</b>					
0400 Due to Other Funds	44,072				
0411 Due to Other Governments					
0412 Due to Primary Government					
0413 Due to Component Unit					
0420 Accounts Payable	8,210,497				
0430 Contracts Payable					
0440 Current Portion of Long-Term Debt					
0450 Short-Term Payables					
0461 Accrued Salaries and Benefits	362,278				
0462 Payroll Deductions and Withholding	8,259,188				
0480 Unearned Revenues					
0490 Other Current Liabilities	3,292,631				
<b>Total Liabilities</b>	<b>\$20,168,666</b>				
0950 Deferred Inflows of Resources	5,415,107				
<b>Fund Balances</b>					
0810 Nonspendable Fund Balance					
0820 Restricted Fund Balance					
0830 Committed Fund Balance					
0840 Assigned Fund Balance					
0850 Unassigned Fund Balance	15,846,863				
<b>Total Fund Balances</b>	<b>\$15,846,863</b>				
<b>Total Liabilities, Deferred Inflows Of Resources And Fund Balances</b>	<b>\$41,430,636</b>				

Amounts Expressed in Whole Dollars

<u>Capital Reserve (690.</u>	<u>Capital Reserve (1431)</u>	<u>Other Capital Projects</u>	<u>Debt Service</u>	<u>Permanent</u>
<u>1850)</u>	<u>(32)</u>	<u>Fund</u>	<u>(40)</u>	<u>(90)</u>
<u>(31)</u>		<u>(39)</u>		

**Liabilities And Deferred Inflows Of Resources And Fund Balances**

**Liabilities**

0400 Due to Other Funds			
0411 Due to Other Governments			
0412 Due to Primary Government			
0413 Due to Component Unit			
0420 Accounts Payable		1,498,793	
0430 Contracts Payable			
0440 Current Portion of Long-Term Debt			
0450 Short-Term Payables			
0461 Accrued Salaries and Benefits			
0462 Payroll Deductions and Withholding			
0480 Unearned Revenues			
0490 Other Current Liabilities			

<b>Total Liabilities</b>		<b>\$1,498,793</b>
--------------------------	--	--------------------

0950 Deferred Inflows of Resources

**Fund Balances**

0810 Nonspendable Fund Balance		
0820 Restricted Fund Balance	754,190	16,076,268
0830 Committed Fund Balance		
0840 Assigned Fund Balance		
0850 Unassigned Fund Balance		

<b>Total Fund Balances</b>	<b>\$754,190</b>	<b>\$16,076,268</b>
----------------------------	------------------	---------------------

<b>Total Liabilities, Deferred Inflows Of Resources And Fund Balances</b>	<b>\$754,190</b>	<b>\$17,575,061</b>
---	------------------	---------------------

Amounts Expressed in Whole Dollars

**Total Governmental Funds**

**Liabilities And Deferred Inflows Of Resources And Fund Balances**

<b>Liabilities</b>	
0400 Due to Other Funds	44,072
0411 Due to Other Governments	
0412 Due to Primary Government	
0413 Due to Component Unit	
0420 Accounts Payable	9,709,290
0430 Contracts Payable	
0440 Current Portion of Long-Term Debt	
0450 Short-Term Payables	
0461 Accrued Salaries and Benefits	362,278
0462 Payroll Deductions and Withholding	8,259,188
0480 Unearned Revenues	
0490 Other Current Liabilities	3,292,631
<b>Total Liabilities</b>	<b>\$21,667,459</b>
0950 Deferred Inflows of Resources	5,415,107
<b>Fund Balances</b>	
0810 Nonspendable Fund Balance	
0820 Restricted Fund Balance	16,830,458
0830 Committed Fund Balance	
0840 Assigned Fund Balance	
0850 Unassigned Fund Balance	15,846,863
<b>Total Fund Balances</b>	<b>\$32,677,321</b>
<b>Total Liabilities, Deferred Inflows Of Resources And Fund Balances</b>	<b>\$59,759,887</b>

Amounts Expressed in Whole Dollars	<u>General Fund</u> <u>(10)</u>	<u>Student Sponsored</u> <u>Activity Fund</u> <u>(21)</u>	<u>Public Purpose Trust</u> <u>(27)</u>	<u>Other Compt Approved</u> <u>(28)</u>	<u>Athletic / Activity</u> <u>(29)</u>
<b>Revenues</b>					
6000 Revenue from Local Sources	131,095,035				
7000 Revenue from State Sources	55,998,579				
8000 Revenue from Federal Sources	8,304,801				
<b>Total Revenues</b>	<b>\$195,398,415</b>				
<b>Expenditures</b>					
1000 Instruction	129,835,207				
2000 Support Services	38,467,674				
3000 Operation of Non-Instructional Services	1,641,713				
4000 Facilities Acquisition, Construction and Improvement Services	1,378,000				
5110 Debt Service	7,539,521				
5130 Refund of Prior Year Revenues / Receipts	575				
5140 Leases					
<b>Total Expenditures</b>	<b>\$178,862,690</b>				
<b>Excess (Deficiency) Of Revenues Over Expenditures</b>	<b>\$16,535,725</b>				
<b>Other Financing Sources (Uses)</b>					
9110 Face Value of Bonds Issued					
9120 Proceeds from Refunding of Bonds					
9130 Bond Premiums	24,459				
9200 Proceeds from Extended-Term Financing and Leases					
9300 Interfund Transfers - IN					
9400 Sale of or Compensation for Loss of Fixed Assets					
9710 Transfers from Component Units					
9720 Transfers from Primary Governments					
9910 Other Financing Sources Not Listed in the 9000 Series					
9990 Insurance Recoveries	1,125,377				
5120 Debt Service – Refunded Bonds					
5150 Bond Discounts					
5200 Interfund Transfers – Out					
5300 Transfers Out to Component Units/Primary Governments					
<b>Total Other Financing Sources (Uses)</b>	<b>\$1,149,836</b>				

Amounts Expressed in Whole Dollars	<u>Capital Reserve (690.1850)</u> <u>(31)</u>	<u>Capital Reserve (1431)</u> <u>(32)</u>	<u>Other Capital Projects</u> <u>Fund</u> <u>(39)</u>	<u>Debt Service</u> <u>(40)</u>	<u>Permanent</u> <u>(90)</u>
<b>Revenues</b>					
6000 Revenue from Local Sources		809	24,814		
7000 Revenue from State Sources					
8000 Revenue from Federal Sources					
<b>Total Revenues</b>		<b>\$809</b>	<b>\$24,814</b>		
<b>Expenditures</b>					
1000 Instruction					
2000 Support Services					
3000 Operation of Non-Instructional Services					
4000 Facilities Acquisition, Construction and Improvement Services			3,342,911		
5110 Debt Service					
5130 Refund of Prior Year Revenues / Receipts					
5140 Leases					
<b>Total Expenditures</b>			<b>\$3,342,911</b>		
<b>Excess (Deficiency) Of Revenues Over Expenditures</b>		<b>\$809</b>	<b>(\$3,318,097)</b>		
<b>Other Financing Sources (Uses)</b>					
9110 Face Value of Bonds Issued					
9120 Proceeds from Refunding of Bonds					
9130 Bond Premiums					
9200 Proceeds from Extended-Term Financing and Leases					
9300 Interfund Transfers - IN					
9400 Sale of or Compensation for Loss of Fixed Assets					
9710 Transfers from Component Units					
9720 Transfers from Primary Governments					
9910 Other Financing Sources Not Listed in the 9000 Series					
9990 Insurance Recoveries					
5120 Debt Service – Refunded Bonds					
5150 Bond Discounts					
5200 Interfund Transfers – Out					
5300 Transfers Out to Component Units/Primary Governments					
<b>Total Other Financing Sources (Uses)</b>					

Amounts Expressed in Whole Dollars	<u>Total Governmental Funds</u>
<b>Revenues</b>	
6000 Revenue from Local Sources	131,120,658
7000 Revenue from State Sources	55,998,579
8000 Revenue from Federal Sources	8,304,801
<b>Total Revenues</b>	<b>\$195,424,038</b>
<b>Expenditures</b>	
1000 Instruction	129,835,207
2000 Support Services	38,467,674
3000 Operation of Non-Instructional Services	1,641,713
4000 Facilities Acquisition, Construction and Improvement Services	4,720,911
5110 Debt Service	7,539,521
5130 Refund of Prior Year Revenues / Receipts	575
5140 Leases	
<b>Total Expenditures</b>	<b>\$182,205,601</b>
<b>Excess (Deficiency) Of Revenues Over Expenditures</b>	<b>\$13,218,437</b>
<b>Other Financing Sources (Uses)</b>	
9110 Face Value of Bonds Issued	
9120 Proceeds from Refunding of Bonds	
9130 Bond Premiums	24,459
9200 Proceeds from Extended-Term Financing and Leases	
9300 Interfund Transfers - IN	
9400 Sale of or Compensation for Loss of Fixed Assets	
9710 Transfers from Component Units	
9720 Transfers from Primary Governments	
9910 Other Financing Sources Not Listed in the 9000 Series	
9990 Insurance Recoveries	1,125,377
5120 Debt Service – Refunded Bonds	
5150 Bond Discounts	
5200 Interfund Transfers – Out	
5300 Transfers Out to Component Units/Primary Governments	
<b>Total Other Financing Sources (Uses)</b>	<b>\$1,149,836</b>



Amounts Expressed in Whole Dollars	<u>General Fund</u> <u>(10)</u>	<u>Student Sponsored</u> <u>Activity Fund</u> <u>(21)</u>	<u>Public Purpose Trust</u> <u>(27)</u>	<u>Other Compt Approved</u> <u>(28)</u>	<u>Athletic / Activity</u> <u>(29)</u>
<b>Special And Extraordinary Items</b>					
9920 Special Items – Gains					
9930 Extraordinary Items – Gains					
5520 Special Items – Losses					
5530 Extraordinary Items – Losses					
<b>Net Change In Fund Balances</b>	<b>\$17,685,561</b>				
<b>Fund Balance</b>					
0001 Fund Balance - Beginning of Fiscal Year	(1,838,698)				
<b>Fund Balance - End Of Year</b>	<b>\$15,846,863</b>				

Amounts Expressed in Whole Dollars	<u>Capital Reserve (690.</u> <u>1850)</u> <u>(31)</u>	<u>Capital Reserve (1431)</u> <u>(32)</u>	<u>Other Capital Projects</u> <u>Fund</u> <u>(39)</u>	<u>Debt Service</u> <u>(40)</u>	<u>Permanent</u> <u>(90)</u>
<b>Special And Extraordinary Items</b>					
9920 Special Items – Gains					
9930 Extraordinary Items – Gains					
5520 Special Items – Losses					
5530 Extraordinary Items – Losses					
<b>Net Change In Fund Balances</b>		<b>\$809</b>	<b>(\$3,318,097)</b>		
<b>Fund Balance</b>					
0001 Fund Balance - Beginning of Fiscal Year		753,381	19,394,365		
<b>Fund Balance - End Of Year</b>		<b>\$754,190</b>	<b>\$16,076,268</b>		

Amounts Expressed in Whole Dollars	<u>Total Governmental Funds</u>
<b>Special And Extraordinary Items</b>	
9920 Special Items – Gains	
9930 Extraordinary Items – Gains	
5520 Special Items – Losses	
5530 Extraordinary Items – Losses	
<b>Net Change In Fund Balances</b>	<b>\$14,368,273</b>
<b>Fund Balance</b>	
0001 Fund Balance - Beginning of Fiscal Year	18,309,048
<b>Fund Balance - End Of Year</b>	<b>\$32,677,321</b>

Amounts Expressed in Whole Dollars	<u>Food Service</u> <u>(51)</u>	<u>Child Care</u> <u>Operations</u> <u>(52)</u>	<u>Other Enterprise</u> <u>(58)</u>	<u>TOTAL</u>	<u>Internal Service</u> <u>(60)</u>
<b>Assets And Deferred Outflows Of Resources</b>					
<b>Current Assets</b>					
0100 Cash and Cash Equivalents	1,454,729			1,454,729	
0110 Investments					
0130 Due From Other Funds	44,072			44,072	
0141 Due From Other Governments					
0142 State Revenue Receivable	3,901			3,901	
0143 Federal Revenue Receivable	147,455			147,455	
0146 Due from Primary Government					
0147 Due from Component Unit					
0150 Other Receivables					
0170 Inventories	48,783			48,783	
0180 Prepaid Expenses (Expenditures)					
0190 Other Current Assets					
<b>Total Current Assets</b>	<b>\$1,698,940</b>			<b>\$1,698,940</b>	
<b>Noncurrent Assets</b>					
0211 Land					
0212 Site Improvements (Net)					
0220 Buildings and Building Improvements (Net)					
0230 Machinery, Equipment and Furniture (Net)	68,682			68,682	
0250 Construction in Progress					
0260 Long Term Prepayments					
0290 Other Noncurrent Assets					
<b>Total Noncurrent Assets</b>	<b>\$68,682</b>			<b>\$68,682</b>	
0910 Deferred Outflows of Resources	406,636			406,636	
<b>Total Assets And Deferred Outflows Of Resources</b>	<b>\$2,174,258</b>			<b>\$2,174,258</b>	

Amounts Expressed in Whole Dollars	<u>Food Service</u> <u>(51)</u>	<u>Child Care</u> <u>Operations</u> <u>(52)</u>	<u>Other Enterprise</u> <u>(58)</u>	<u>TOTAL</u>	<u>Internal Service</u> <u>(60)</u>
<b>Liabilities And Deferred Inflows Of Resources And Net Position</b>					
<b>Current Liabilities</b>					
0400 Due to Other Funds	271			271	
0411 Due to Other Governments					
0413 Due to Component Unit					
0420 Accounts Payable	20,543			20,543	
0430 Contracts Payable					
0440 Current Portion of Long-Term Debt	85,975			85,975	
0450 Short-Term Payables					
0461 Accrued Salaries and Benefits	21,660			21,660	
0462 Payroll Deductions and Withholding					
0480 Unearned Revenues					
0490 Other Current Liabilities					
<b>Total Current Liabilities</b>	<b>\$128,449</b>			<b>\$128,449</b>	
<b>Noncurrent Liabilities</b>					
0510 Bonds Payable					
0520 Extended-Term Financing Agreements Payable					
0530 Lease Obligations					
0540 Accumulated Compensated Absences					
0550 Authority Lease Obligations					
0560 Other Post-Employment Benefits (OPEB)	165,716			165,716	
0570 Net Pension Liability	2,165,000			2,165,000	
0599 Other Noncurrent Liabilities					
<b>Total Noncurrent Liabilities</b>	<b>\$2,330,716</b>			<b>\$2,330,716</b>	
<b>Total Liabilities</b>	<b>\$2,459,165</b>			<b>\$2,459,165</b>	
0950 Deferred Inflows of Resources	659,564			659,564	
<b>Net Position</b>					
0791 Net Investment in Capital Assets	68,682			68,682	
0008 Restricted Net Position (0792 – 0798)					
0799 Unrestricted Net Position	(1,013,153)			(1,013,153)	
<b>Total Net Position</b>	<b>(\$944,471)</b>			<b>(\$944,471)</b>	
<b>Total Liabilities And Deferred Inflows Of Resources And Net Position</b>	<b>\$2,174,258</b>			<b>\$2,174,258</b>	

Amounts Expressed in Whole Dollars	<u>Food Service</u> <u>(51)</u>	<u>Child Care Operations</u> <u>(52)</u>	<u>Other Enterprise</u> <u>(58)</u>	<u>TOTAL</u>	<u>Internal Service</u> <u>(60)</u>
<b>Operating Revenues</b>					
6600 Food Service Revenue	49,401			49,401	
0071 Charges for Services					
0072 Other Operating Revenue	70,315			70,315	
<b>Total Operating Revenues</b>	<b>\$119,716</b>			<b>\$119,716</b>	
<b>Operating Expenses</b>					
100 Personnel Services – Salaries	871,779			871,779	
200 Personnel Services – Employee Benefits	169,004			169,004	
300 Purchased Professional and Technical Services	10,105			10,105	
400 Purchased Property Services	15,154			15,154	
500 Other Purchased Services	671			671	
600 Supplies	1,628,994			1,628,994	
740 Depreciation	8,874			8,874	
810 Dues and Fees	5,387			5,387	
880 Refunds of Prior Years' Receipts					
890 Miscellaneous Expenditures					
<b>Total Operating Expenses</b>	<b>\$2,709,968</b>			<b>\$2,709,968</b>	
<b>Operating Income (Loss)</b>	<b>(\$2,590,252)</b>			<b>(\$2,590,252)</b>	
<b>Non Operating Revenues (Expenses)</b>					
6500 Earnings on Investments	2,080			2,080	
6920 Contributions and Donations from Private Sources					
6930 Gains or Losses on Sale of Fixed Assets					
6991 Refunds of a Prior Year Expenditure					
7000 Revenue from State Sources	284,847			284,847	
8000 Revenue from Federal Sources	3,735,206			3,735,206	
9990 Insurance Recoveries					
820 Claims and Judgments Against the LEA					
830 Interest					
<b>TOTAL Non Operating Revenues (Expenses)</b>	<b>\$4,022,133</b>			<b>\$4,022,133</b>	
<b>Income (Loss) Before Contributions And Transfers</b>	<b>\$1,431,881</b>			<b>\$1,431,881</b>	

Amounts Expressed in Whole Dollars	<u>Food Service</u> <u>(51)</u>	<u>Child Care Operations</u> <u>(52)</u>	<u>Other Enterprise</u> <u>(58)</u>	<u>TOTAL</u>	<u>Internal Service</u> <u>(60)</u>
<b>Contributions, Transfers, and Special and Extraordinary Items</b>					
5200 Interfund Transfers – Out					
5300 Transfers Out to Component Units/Primary Governments					
5520 Special Items – Losses					
5530 Extraordinary Items – Losses					
9300 Interfund Transfers - IN					
9500 Capital Contributions					
9700 Transfers IN From Component Units/Primary Governments					
9920 Special Items – Gains					
9930 Extraordinary Items – Gains					
<b>Change In Net Position</b>	<b>\$1,431,881</b>			<b>\$1,431,881</b>	
0002 Net Position - Beginning of Fiscal Year	(2,376,352)			(2,376,352)	
0003 Accounting Changes / Residual Equity Transfers					
<b>Net Position - End Of Year</b>	<b>(\$944,471)</b>			<b>(\$944,471)</b>	

LEA : 124151902 Coatesville Area SD

Printed 12/20/2022 12:07:23 PM

Amounts Expressed in Whole Dollars	<u>Food Service</u> <u>(51)</u>	<u>Child Care Operations</u> <u>(52)</u>	<u>Other Enterprise</u> <u>(58)</u>	<u>TOTAL</u>	<u>Internal Service(60)</u>
<b>Cash Flows From Operating Activities</b>					
0011 Cash Receipts From Users	132,212			132,212	
0012 Cash Receipts From Assessments Made to Other Funds					
0013 Cash Receipts From Earnings on Investments					
0014 Cash Receipts From Other Operating Revenue					
0015 Cash Payments To Employees For Services	1,362,817			1,362,817	
0016 Cash Payments For Insurance Claims					
0017 Cash Payments To Suppliers For Goods and Services	2,364,156			2,364,156	
0018 Cash Payments For Other Operating Expenses					
<b>Net Cash Provided By (Used For) Operating Activities</b>	<b>(\$3,594,761)</b>			<b>(\$3,594,761)</b>	
<b>Cash Flows From Non-Capital Financing Activities</b>					
0021 Receipts From Local Sources - 6000					
0022 Receipts From State Sources - 7000	280,946			280,946	
0023 Receipts From Federal Sources -8000	3,636,337			3,636,337	
0024 Notes and Loans Received (Repaid)					
0025 Interest Paid on Notes/Loans - 5100-830					
0026 Operating Transfers In (Out)/Residual Equity Trans					
0027 Operating Transfers In (Out) Primary Government / Comp Unit					
0028 Receipts From Refund of Prior Year Expenditures - 6991					
0029 Special and Extraordinary Gains (losses)					
0030 Receipts from Insurance Recoveries -9990					
<b>Net Cash Prov By (Used for) Non-Capital Financing Activities</b>	<b>\$3,917,283</b>			<b>\$3,917,283</b>	
<b>Cash Flows From Capital and Related Financing Activities</b>					
0031 Payments For Fac Acq, Const, and Imp - 4000	(22,693)			(22,693)	
0032 Gain / (Loss) on Sale of Fixed Assets - 6930					
0033 Proceeds From Extended Term Financing - 9200					
0034 Principal Paid on Financing Agreements					
0035 Interest Paid on Financing Agreements - 5100-830					
0036 (Inc) Dec in Contributed Capital					
<b>Net Cash Prov By (Used for) Capital and Related Financing Activities</b>	<b>(\$22,693)</b>			<b>(\$22,693)</b>	
<b>Cash Flows From Investing Activities</b>					
0041 Earnings on Investments - 6500	2,080			2,080	
0042 Purchase of Inv Securities / Deposits to Inv Pools					
0043 Receipts From Investment Pool Withdrawals					
0044 Proceeds from Sale and Maturity of Inv Securities					



LEA : 124151902 Coatesville Area SD

Printed 12/20/2022 12:07:23 PM

0045 Loans Received (Paid)

<b>Net Cash Prov By (Used for) Investing Activities</b>	<b>\$2,080</b>	<b>\$2,080</b>
---	----------------	----------------

LEA : 124151902 Coatesville Area SD

Printed 12/20/2022 12:07:23 PM

	<u>Food Service</u> <u>(51)</u>	<u>Child Care Operations</u> <u>(52)</u>	<u>Other Enterprise</u> <u>(58)</u>	<u>TOTAL</u>	<u>Internal Service</u> <u>(60)</u>
<b>Net Increase (Decrease) in Cash Flows</b>	<b>301,909</b>			<b>301,909</b>	
0004 Cash and Cash Equivalents Beginning of Year	1,152,820			1,152,820	
<b>Cash and Cash Equivalents at Year End</b>	<b>\$1,454,729</b>			<b>\$1,454,729</b>	

**Reconciliation of Operating Income (Loss) To Net Cash Provided by (Used For) Operating Activities**

0005 Operating Income (Loss) per REP	(2,590,252)			(2,590,252)	
<b>Adjustments</b>					
0051 Depreciation and Net Amortization	8,874			8,874	
0052 Provision for Uncollectible Accounts					
0053 Other Adjustments					
<b>Effect of Changes in Assets, Liabilities, Deferred Outflows and Deferred Inflows</b>					
0054 (Inc) Dec In Accounts Receivable (0120-0150)	12,496			12,496	
0055 Advances to Other Funds (0160)					
0056 (Inc) Dec in Inventories (0170)	(21,470)			(21,470)	
0057 (Inc) Dec in Prepaid Expenses (0180)					
0058 (Inc) Dec in Other Current or Noncurrent Assets					
0064 Deferred Outflows (0910)	8,415			8,415	
0059 Inc (Dec) in Accounts Payable (0400-0450)	(673,770)			(673,770)	
0060 Inc (Dec) in Accrued Salaries/Benefits (0461)	(8,605)			(8,605)	
0065 Inc (Dec) in Net Pension Liabilities (0570)	(331,427)			(331,427)	
0066 Inc (Dec) in Other Postemp Benefit Oblig (0560)	978			978	
0061 Inc (Dec) in Payroll Deductions/Withholding (0462)					
0062 Inc (Dec) in Unearned Revenue (0480)					
0063 Inc (Dec) in Other Current or Noncurrent Liabilities					
0067 Deferred Inflows (0950)					
<b>Total Adjustments</b>	<b>(\$1,004,509)</b>			<b>(\$1,004,509)</b>	
<b>Cash Provided By (Used for) Total</b>	<b>(\$3,594,761)</b>			<b>(\$3,594,761)</b>	

**COMBINED STATEMENT OF CASH FLOWS  
SCHEDULE OF NONCASH INVESTING, CAPITAL, AND FINANCING ACTIVITIES**

Explanation of Transaction and Balance Sheet Effect	Amount
<b>Total</b>	

LEA : 124151902 Coatesville Area SD

Printed 12/20/2022 12:07:28 PM

Amounts Expressed in Whole Dollars	<u>Private Purpose Trust</u> <u>(71)</u>	<u>Investment Trust</u> <u>(72)</u>	<u>Pension Trust</u> <u>(73)</u>	<u>Student Activity Custodial</u> <u>(81)</u>
<b>Assets And Deferred Outflows Of Resources</b>				
<b>Assets</b>				
0100 Cash and Cash Equivalents	159,449			162,353
0110 Investments	14,472			
0130 Due From Other Funds				
0140 Due from Other Governments, Primary Government and Component Units				
0150 Other Receivables				
0170 Inventories				
0180 Prepaid Expenses (Expenditures)				
0190 Other Current Assets				
0220 Buildings and Building Improvements (Net)				
0230 Machinery, Equipment and Furniture (Net)				
<b>Total Assets</b>	<b>\$173,921</b>			<b>\$162,353</b>
0910 Deferred Outflows of Resources				
<b>Total Assets And Deferred Outflows Of Resources</b>	<b>\$173,921</b>			<b>\$162,353</b>

LEA : 124151902 Coatesville Area SD

Printed 12/20/2022 12:07:28 PM

Amounts Expressed in Whole Dollars	<u>Other Custodial</u> <u>(89)</u>	<u>Fiduciary Component Units</u> <u>(98)</u>	<u>Total Fiduciary Funds</u>
<b>Assets And Deferred Outflows Of Resources</b>			
<b>Assets</b>			
0100 Cash and Cash Equivalents			321,802
0110 Investments			14,472
0130 Due From Other Funds			
0140 Due from Other Governments, Primary Government and Component Units			
0150 Other Receivables			
0170 Inventories			
0180 Prepaid Expenses (Expenditures)			
0190 Other Current Assets			
0220 Buildings and Building Improvements (Net)			
0230 Machinery, Equipment and Furniture (Net)			
<b>Total Assets</b>			<b>\$336,274</b>
0910 Deferred Outflows of Resources			
<b>Total Assets And Deferred Outflows Of Resources</b>			<b>\$336,274</b>

LEA : 124151902 Coatesville Area SD

Printed 12/20/2022 12:07:28 PM

Amounts Expressed in Whole Dollars	<u>Private Purpose Trust</u> (71)	<u>Investment Trust</u> (72)	<u>Pension Trust</u> (73)	<u>Student Activity Custodial</u> (81)
<b>Liabilities, Deferred Inflows Of Resources And Net Position</b>				
<b>Liabilities</b>				
0400 Due to Other Funds				207
0410 Due to Other Governments, Primary Government and Component Units				
0420 Accounts Payable	1,035			30,381
0430 Contracts Payable				
0450 Short-Term Payables				
0460 Payroll Accruals and Withholdings				
0480 Unearned Revenues				
0490 Other Current Liabilities				131,765
<b>Total Liabilities</b>	<b>\$1,035</b>			<b>\$162,353</b>
0950 Deferred Inflows of Resources				
<b>Net Position</b>				
0791 Net Investment in Capital Assets				
0009 Restricted Net Position (0792 – 0798)	172,886			
0799 Unrestricted Net Position				
<b>Total Net Position</b>	<b>\$172,886</b>			
<b>Total Liabilities, Deferred Inflows Of Resources And Net Position</b>	<b>\$173,921</b>			<b>\$162,353</b>

LEA : 124151902 Coatesville Area SD

Printed 12/20/2022 12:07:28 PM

Amounts Expressed in Whole Dollars	<u>Other Custodial</u> <u>(89)</u>	<u>Fiduciary Component Units</u> <u>(98)</u>	<u>Total Fiduciary Funds</u>
<b>Liabilities, Deferred Inflows Of Resources And Net Position</b>			
<b>Liabilities</b>			
0400 Due to Other Funds			207
0410 Due to Other Governments, Primary Government and Component Units			
0420 Accounts Payable			31,416
0430 Contracts Payable			
0450 Short-Term Payables			
0460 Payroll Accruals and Withholdings			
0480 Unearned Revenues			
0490 Other Current Liabilities			131,765
<b>Total Liabilities</b>			<b>\$163,388</b>
0950 Deferred Inflows of Resources			
<b>Net Position</b>			
0791 Net Investment in Capital Assets			
0009 Restricted Net Position (0792 – 0798)			172,886
0799 Unrestricted Net Position			
<b>Total Net Position</b>			<b>\$172,886</b>
<b>Total Liabilities, Deferred Inflows Of Resources And Net Position</b>			<b>\$336,274</b>

Amounts Expressed in Whole Dollars	<u>Private Purpose Trust</u> (71)	<u>Investment Trust</u> (72)	<u>Pension Trust</u> (73)	<u>Student Activity</u> <u>Custodial</u> (81)	<u>Other Custodial</u> (89)	<u>Fiduciary Component</u> <u>Units</u> (98)
<b>Additions</b>						
0091 Gifts and Contributions						
0095 Net Investment Earnings	191					
0092 Other Additions						
<b>Deductions</b>						
0093 Scholarships Awarded	2,530					
0094 Other Deductions						
<b>Change In Net Position</b>	<b>(\$2,339)</b>					
0006 Net Position – Beginning of Fiscal Year	175,225					
0007 Net Position Held in Trust for Pension Benefits						
<b>Net Position - End of Fiscal Year</b>	<b>\$172,886</b>					



Amounts Expressed in Whole Dollars	<u>Total Fiduciary Funds</u>
<b>Additions</b>	
0091 Gifts and Contributions	
0095 Net Investment Earnings	191
0092 Other Additions	
<b>Deductions</b>	
0093 Scholarships Awarded	2,530
0094 Other Deductions	
<b>Change in Net Position</b>	<b>(\$2,339)</b>
0006 Net Position – Beginning of Fiscal Year	175,225
0007 Net Position Held in Trust for Pension Benefits	
<b>Net Position - End of Fiscal Year</b>	<b>\$172,886</b>

	<u>Revenue Reported In Current Year</u>	<u>Current Year Tax Accrual</u>	<u>Prior Year Tax Accrual</u>	<u>Taxes Collected In Current Year</u>
<b><u>Revenue from Local Sources</u></b>				
6111 Current Real Estate Taxes	107,143,337.08			107,143,337.08
6112 Interim Real Estate Taxes	3,692,423.97			3,692,423.97
6113 Public Utility Realty Taxes	117,251.22			117,251.22
6114 Payments in Lieu of Current Taxes - State / Local	234.10			234.10
6143 Current Act 511 Local Services Taxes	82,244.92			82,244.92
6151 Current Act 511 Earned Income Taxes	10,155,173.92			10,155,173.92
6153 Current Act 511 Real Estate Transfer Taxes	2,762,366.99			2,762,366.99
6411 Delinquent Real Estate Taxes	4,178,366.50			4,178,366.50
6500 Earnings on Investments	46,347.80			
6700 Revenues from LEA Activities	103,482.09			
6832 Federal IDEA Revenue Received as Pass Through	1,334,900.00			
6833 Federal ARRA IDEA Revenue Received as Pass Through	320,961.00			
6910 Rentals	205,161.55			
6920 Contributions and Donations from Private Sources	31,405.39			
6944 Receipts from Other LEAs in Pennsylvania - Education	375,778.25			
6980 Revenue from Community Services Activities	8,596.39			
6991 Refunds of a Prior Year Expenditure	453,623.64			
6999 Other Revenues Not Specified Above	83,379.78			
<b>TOTAL Revenue from Local Sources</b>	<b>\$131,095,034.59</b>			<b>\$128,131,398.70</b>

**Revenue Reported  
In Current Year**

**Revenue from State Sources**

7111 Basic Education Funding-Formula	27,226,996.31		
7112 Basic Education Funding-Social Security	1,507,233.79		
7160 Tuition for Orphans Subsidy	107,101.88		
7271 Special Education funds for School-Aged Pupils	6,215,950.74		
7311 Pupil Transportation Subsidy	5,382,984.40		
7312 Nonpublic and Charter School Pupil Transportation Subsidy	1,445,290.00		
7320 Rental and Sinking Fund Payments / Building Reimbursement Subsidy	733,501.93		
7330 Health Services (Medical, Dental, Nurse, Act 25)	99,607.26		
7340 State Property Tax Reduction Allocation	3,935,645.76		
7505 Ready to Learn Block Grant	1,603,925.00		
7599 Other State Revenue Not Listed Elsewhere in the 7000 Series	235,215.00		
7820 State Share of Retirement Contributions	7,505,126.87		
<b>TOTAL Revenue from State Sources</b>	<b>\$55,998,578.94</b>		

**Revenue Reported  
In Current Year**

**Revenue from Federal Sources**

8514 NCLB, Title I - Improving the Academic Achievement of the Disadvantaged	1,690,568.71		
8515 NCLB, Title II - Preparing, Training and Recruiting High Quality Teachers and Principals	297,581.64		
8516 NCLB, Title III - Language Instruction for Limited English Proficient and Immigrant Students	65,493.37		
8517 NCLB, Title IV - 21St Century Schools	100,775.44		
8741 Elementary and Secondary School Emergency Relief Fund (ESSER)	146,223.60		
8742 Governor's Emergency Education Relief Fund (GEER)	141,580.67		
8743 ESSER II - Elementary and Secondary School Emergency Relief Fund	4,083,889.34		
8744 ARP ESSER - Elementary and Secondary School Emergency Relief Fund	1,405,163.20		
8751 ARP ESSER Learning Loss	2,499.79		
8752 ARP ESSER Summer Programs	10,554.37		
8753 ARP ESSER Afterschool Programs	155,309.49		
8754 ARP ESSER Homeless Children and Youth Funds	7,785.62		
8755 ARP ESSER Emergency Relief for Other Educational Entities	51,361.47		
8820 Medical Assistance Reimbursement for Administrative Claiming (Quarterly) Program	146,013.87		
<b>TOTAL Revenue from Federal Sources</b>	<b>\$8,304,800.58</b>		

Revenue Reported  
In Current Year

**Other Financing Sources**

9130 Bond Premiums	24,459.00		
9990 Insurance Recoveries	1,125,377.38		
<b>TOTAL Other Financing Sources</b>	<b>\$1,149,836.38</b>		
<b>TOTAL FROM ALL SOURCES</b>	<b>\$196,548,250.49</b>		<b>\$128,131,398.70</b>

LEA : 124151902 Coatesville Area SD

Printed 12/20/2022 12:07:48 PM

	<u>General Fund (10)</u>	<u>Student Sponsored Activity Fund (21)</u>	<u>Public Purpose Trust (27)</u>	<u>Other Compt Approved (28)</u>	<u>Athletic / Activity (29)</u>	<u>Capital Reserve (690, 1850) (31)</u>
<b>6000 Revenue from Local Sources</b>						
6111 Current Real Estate Taxes	107,143,337.08					
6112 Interim Real Estate Taxes	3,692,423.97					
6113 Public Utility Realty Taxes	117,251.22					
6114 Payments in Lieu of Current Taxes - State / Local	234.10					
6143 Current Act 511 Local Services Taxes	82,244.92					
6151 Current Act 511 Earned Income Taxes	10,155,173.92					
6153 Current Act 511 Real Estate Transfer Taxes	2,762,366.99					
6411 Delinquent Real Estate Taxes	4,178,366.50					
6500 Earnings on Investments	46,347.80					
6700 Revenues from LEA Activities	103,482.09					
6832 Federal IDEA Revenue Received as Pass Through	1,334,900.00					
6833 Federal ARRA IDEA Revenue Received as Pass Through	320,961.00					
6910 Rentals	205,161.55					
6920 Contributions and Donations from Private Sources	31,405.39					
6944 Receipts from Other LEAs in Pennsylvania - Education	375,778.25					
6980 Revenue from Community Services Activities	8,596.39					
6991 Refunds of a Prior Year Expenditure	453,623.64					
6999 Other Revenues Not Specified Above	83,379.78					
<b>6000 Total Revenue from Local Sources</b>	<b>\$131,095,034.59</b>					
<b>7000 Revenue from State Sources</b>						
7111 Basic Education Funding-Formula	27,226,996.31					
7112 Basic Education Funding-Social Security	1,507,233.79					
7160 Tuition for Orphans Subsidy	107,101.88					
7271 Special Education funds for School-Aged Pupils	6,215,950.74					
7311 Pupil Transportation Subsidy	5,382,984.40					
7312 Nonpublic and Charter School Pupil Transportation Subsidy	1,445,290.00					
7320 Rental and Sinking Fund Payments / Building Reimbursement Subsidy	733,501.93					
7330 Health Services (Medical, Dental, Nurse, Act 25)	99,607.26					
7340 State Property Tax Reduction Allocation	3,935,645.76					
7505 Ready to Learn Block Grant	1,603,925.00					
7599 Other State Revenue Not Listed Elsewhere in the 7000 Series	235,215.00					
7820 State Share of Retirement Contributions	7,505,126.87					
<b>7000 Total Revenue from State Sources</b>	<b>\$55,998,578.94</b>					
<b>8000 Revenue from Federal Sources</b>						
8514 NCLB, Title I - Improving the Academic Achievement of the Disadvantaged	1,690,568.71					

LEA : 124151902 Coatesville Area SD

Printed 12/20/2022 12:07:48 PM

	<u>Capital Reserve</u> <u>(1431) (32)</u>	<u>Other Capital</u> <u>Projects Fund (39)</u>	<u>Debt Service (40)</u>	<u>Permanent (90)</u>	<u>Total</u>
<b>6000 Revenue from Local Sources</b>					
6111 Current Real Estate Taxes					107,143,337.08
6112 Interim Real Estate Taxes					3,692,423.97
6113 Public Utility Realty Taxes					117,251.22
6114 Payments in Lieu of Current Taxes - State / Local					234.10
6143 Current Act 511 Local Services Taxes					82,244.92
6151 Current Act 511 Earned Income Taxes					10,155,173.92
6153 Current Act 511 Real Estate Transfer Taxes					2,762,366.99
6411 Delinquent Real Estate Taxes					4,178,366.50
6500 Earnings on Investments	809.22	24,813.82			71,970.84
6700 Revenues from LEA Activities					103,482.09
6832 Federal IDEA Revenue Received as Pass Through					1,334,900.00
6833 Federal ARRA IDEA Revenue Received as Pass Through					320,961.00
6910 Rentals					205,161.55
6920 Contributions and Donations from Private Sources					31,405.39
6944 Receipts from Other LEAs in Pennsylvania - Education					375,778.25
6980 Revenue from Community Services Activities					8,596.39
6991 Refunds of a Prior Year Expenditure					453,623.64
6999 Other Revenues Not Specified Above					83,379.78
<b>6000 Total Revenue from Local Sources</b>	<b>\$809.22</b>	<b>\$24,813.82</b>			<b>\$131,120,657.63</b>
<b>7000 Revenue from State Sources</b>					
7111 Basic Education Funding-Formula					27,226,996.31
7112 Basic Education Funding-Social Security					1,507,233.79
7160 Tuition for Orphans Subsidy					107,101.88
7271 Special Education funds for School-Aged Pupils					6,215,950.74
7311 Pupil Transportation Subsidy					5,382,984.40
7312 Nonpublic and Charter School Pupil Transportation Subsidy					1,445,290.00
7320 Rental and Sinking Fund Payments / Building Reimbursement Subsidy					733,501.93
7330 Health Services (Medical, Dental, Nurse, Act 25)					99,607.26
7340 State Property Tax Reduction Allocation					3,935,645.76
7505 Ready to Learn Block Grant					1,603,925.00
7599 Other State Revenue Not Listed Elsewhere in the 7000 Series					235,215.00
7820 State Share of Retirement Contributions					7,505,126.87
<b>7000 Total Revenue from State Sources</b>					<b>\$55,998,578.94</b>
<b>8000 Revenue from Federal Sources</b>					
8514 NCLB, Title I - Improving the Academic Achievement of the Disadvantaged					1,690,568.71

LEA : 124151902 Coatesville Area SD

Printed 12/20/2022 12:07:48 PM

	<u>General Fund (10)</u>	<u>Student Sponsored Activity Fund (21)</u>	<u>Public Purpose Trust (27)</u>	<u>Other Compt Approved (28)</u>	<u>Athletic / Activity (29)</u>	<u>Capital Reserve (690, 1850) (31)</u>
<b>8000 Revenue from Federal Sources</b>						
8515 NCLB, Title II - Preparing, Training and Recruiting High Quality Teachers and Principals	297,581.64					
8516 NCLB, Title III - Language Instruction for Limited English Proficient and Immigrant Students	65,493.37					
8517 NCLB, Title IV - 21st Century Schools	100,775.44					
8741 Elementary and Secondary School Emergency Relief Fund (ESSER)	146,223.60					
8742 Governor's Emergency Education Relief Fund (GEER)	141,580.67					
8743 ESSER II - Elementary and Secondary School Emergency Relief Fund	4,083,889.34					
8744 ARP ESSER - Elementary and Secondary School Emergency Relief Fund	1,405,163.20					
8751 ARP ESSER Learning Loss	2,499.79					
8752 ARP ESSER Summer Programs	10,554.37					
8753 ARP ESSER Afterschool Programs	155,309.49					
8754 ARP ESSER Homeless Children and Youth Funds	7,785.62					
8755 ARP ESSER Emergency Relief for Other Educational Entities	51,361.47					
8820 Medical Assistance Reimbursement for Administrative Claiming (Quarterly) Program	146,013.87					
<b>8000 Total Revenue from Federal Sources</b>	<b>\$8,304,800.58</b>					
<b>9000 Other Financing Sources</b>						
9130 Bond Premiums	24,459.00					
9990 Insurance Recoveries	1,125,377.38					
<b>9000 Total Other Financing Sources</b>	<b>\$1,149,836.38</b>					
<b>Total From All Sources</b>	<b>\$196,548,250.49</b>					



LEA : 124151902 Coatesville Area SD

Printed 12/20/2022 12:07:48 PM

	<u>Capital Reserve</u> <u>(1431) (32)</u>	<u>Other Capital</u> <u>Projects Fund (39)</u>	<u>Debt Service (40)</u>	<u>Permanent (90)</u>	<u>Total</u>
<b>8000 Revenue from Federal Sources</b>					
8515 NCLB, Title II - Preparing, Training and Recruiting High Quality Teachers and Principals					297,581.64
8516 NCLB, Title III - Language Instruction for Limited English Proficient and Immigrant Students					65,493.37
8517 NCLB, Title IV - 21st Century Schools					100,775.44
8741 Elementary and Secondary School Emergency Relief Fund (ESSER)					146,223.60
8742 Governor's Emergency Education Relief Fund (GEER)					141,580.67
8743 ESSER II - Elementary and Secondary School Emergency Relief Fund					4,083,889.34
8744 ARP ESSER - Elementary and Secondary School Emergency Relief Fund					1,405,163.20
8751 ARP ESSER Learning Loss					2,499.79
8752 ARP ESSER Summer Programs					10,554.37
8753 ARP ESSER Afterschool Programs					155,309.49
8754 ARP ESSER Homeless Children and Youth Funds					7,785.62
8755 ARP ESSER Emergency Relief for Other Educational Entities					51,361.47
8820 Medical Assistance Reimbursement for Administrative Claiming (Quarterly) Program					146,013.87
<b>8000 Total Revenue from Federal Sources</b>					<b>\$8,304,800.58</b>
<b>9000 Other Financing Sources</b>					
9130 Bond Premiums					24,459.00
9990 Insurance Recoveries					1,125,377.38
<b>9000 Total Other Financing Sources</b>					<b>\$1,149,836.38</b>
<b>Total From All Sources</b>	<b>\$809.22</b>	<b>\$24,813.82</b>			<b>\$196,573,873.53</b>

	<u>General Fund (10)</u>	<u>Student Sponsored Activity Fund (21)</u>	<u>Public Purpose Trust (27)</u>	<u>Other Compt Approved (28)</u>	<u>Athletic / Activity (29)</u>	<u>Capital Reserve (690. 1850) (31)</u>
Revenue from Local Sources	131,095,034.59					
Revenue from State Sources	55,998,578.94					
Revenue from Federal Sources	8,304,800.58					
Other Financing Sources	1,149,836.38					
<b>Total From All Sources</b>	<b>\$196,548,250.49</b>					

	<u>Capital Reserve (1431)</u> <u>(32)</u>	<u>Other Capital Projects</u> <u>Fund (39)</u>	<u>Debt Service (40)</u>	<u>Permanent (90)</u>	<u>Total</u>
Revenue from Local Sources	809.22	24,813.82			131,120,657.63
Revenue from State Sources					55,998,578.94
Revenue from Federal Sources					8,304,800.58
Other Financing Sources					1,149,836.38
<b>Total From All Sources</b>	<b>\$809.22</b>	<b>\$24,813.82</b>			<b>\$196,573,873.53</b>

General Fund (10)

	<u>Total</u>
<b>1000 Instruction</b>	
<b>100 Personnel Services – Salaries</b>	
100 Personnel Services – Salaries	29,225,700.21
<b>Total Personnel Services – Salaries</b>	<b>\$29,225,700.21</b>
<b>200 Personnel Services – Employee Benefits</b>	
210 Group Insurance – Contracted Provider	72,327.23
220 Social Security Contributions	2,162,494.23
230 PSERS Retirement Contributions	10,198,161.15
250 Unemployment Compensation	4,915.19
260 Workers’ Compensation	123,715.52
270 Group Insurance – Self-Insurance	4,978,088.29
292 Health Savings Accounts	18,000.00
<b>Total Personnel Services – Employee Benefits</b>	<b>\$17,557,701.61</b>
<b>300 Purchased Professional and Technical Services</b>	
322 Professional Educational Services – Ius	13,976,015.79
323 Professional Educational Services – Other Educational Agencies	28,225.87
329 Professional Educational Services – Other	6,859,185.32
330 Other Professional Services	98,615.20
360 Employee Training and Development Services	113,548.48
390 Other Purchased Professional and Technical Services	147,645.50
<b>Total Purchased Professional and Technical Services</b>	<b>\$21,223,236.16</b>
<b>400 Purchased Property Services</b>	
430 Repairs and Maintenance Services	59,676.74
440 Rentals	3,792.00
<b>Total Purchased Property Services</b>	<b>\$63,468.74</b>
<b>500 Other Purchased Services</b>	
510 Student Transportation Services	15,947.95
550 Printing and Binding	382.03
561 Tuition To Other School Districts Within the State	276,839.31
562 Tuition To Pennsylvania Charter Schools	52,508,768.19
563 Tuition To Nonpublic Schools	634,309.40
564 Tuition To Career and Technology Centers	3,405,888.00
566 Tuition To Institutions of Higher Education and Technical Institutes	120,465.00
567 Tuition To Approved Private Schools (APS) and PA Chartered Schools for the Deaf and Blind	2,616,575.01
568 Tuition To Private Residential Rehabilitative Institutions (PRRI) [In-State] and Detention Centers	53,151.87
594 IU Payment By Withholding for Institutionalized Children’s Programs – Special Classes	4,201.22
<b>Total Other Purchased Services</b>	<b>\$59,636,527.98</b>
<b>600 Supplies</b>	
610 General Supplies	359,975.89
630 Food	8,591.73
640 Books and Periodicals	401,210.38
650 Supplies & Fees – Technology Related	1,310,059.16
<b>Total Supplies</b>	<b>\$2,079,837.16</b>

LEA : 124151902 Coatesville Area SD

Printed 12/20/2022 12:07:59 PM

**General Fund (10)**

<b>1000 Instruction</b>	<b><u>Total</u></b>
<b>700 <u>Property</u></b>	
752 Capital Equipment – Original and Additional	4,497.00
762 Capitalized Equipment - Replacement	34,649.82
<b>Total Property</b>	<b>\$39,146.82</b>
<b>800 <u>Other Objects</u></b>	
810 Dues and Fees	561.90
890 Miscellaneous Expenditures	9,026.70
<b>Total Other Objects</b>	<b>\$9,588.60</b>
<b>Total 1000 Instruction</b>	<b>\$129,835,207.28</b>

**General Fund (10)**

**1100 Regular Programs – Elementary / Secondary**

	<u>Elementary</u>	<u>Secondary</u>	<u>Federal</u>	<u>Total</u>
<b>100 Personnel Services – Salaries</b>				
100 Personnel Services – Salaries	11,976,820.29	10,252,513.47	1,639,867.80	23,869,201.56
<b>Total Personnel Services – Salaries</b>	<b>\$11,976,820.29</b>	<b>\$10,252,513.47</b>	<b>\$1,639,867.80</b>	<b>\$23,869,201.56</b>
<b>200 Personnel Services – Employee Benefits</b>				
210 Group Insurance – Contracted Provider	30,340.08	25,570.95	2,559.91	58,470.94
220 Social Security Contributions	885,495.10	756,348.58	122,340.16	1,764,183.84
230 PSERS Retirement Contributions	4,190,586.67	3,572,189.69	572,384.74	8,335,161.10
250 Unemployment Compensation	830.50	(353.11)	2,015.73	2,493.12
260 Workers' Compensation	50,697.72	43,519.34	6,725.41	100,942.47
270 Group Insurance – Self-Insurance	2,112,372.65	1,806,077.03	193,675.82	4,112,125.50
292 Health Savings Accounts	1,800.00	900.00		2,700.00
<b>Total Personnel Services – Employee Benefits</b>	<b>\$7,272,122.72</b>	<b>\$6,204,252.48</b>	<b>\$899,701.77</b>	<b>\$14,376,076.97</b>
<b>300 Purchased Professional and Technical Services</b>				
322 Professional Educational Services – lus			17,112.56	17,112.56
323 Professional Educational Services – Other Educational Agencies	2,335.34	12,667.50		15,002.84
329 Professional Educational Services – Other	417,479.45	328,622.07		746,101.52
330 Other Professional Services	1,290.00	1,290.00	80,154.62	82,734.62
390 Other Purchased Professional and Technical Services		600.00	147,045.50	147,645.50
<b>Total Purchased Professional and Technical Services</b>	<b>\$421,104.79</b>	<b>\$343,179.57</b>	<b>\$244,312.68</b>	<b>\$1,008,597.04</b>
<b>400 Purchased Property Services</b>				
430 Repairs and Maintenance Services		954.85	58,721.89	59,676.74
440 Rentals		3,792.00		3,792.00
<b>Total Purchased Property Services</b>		<b>\$4,746.85</b>	<b>\$58,721.89</b>	<b>\$63,468.74</b>
<b>500 Other Purchased Services</b>				
510 Student Transportation Services	8,099.68	6,446.90		14,546.58
550 Printing and Binding		382.03		382.03
561 Tuition To Other School Districts Within the State	4,049.86	4,049.87		8,099.73
562 Tuition To Pennsylvania Charter Schools	14,994,536.99	14,994,536.99		29,989,073.98
566 Tuition To Institutions of Higher Education and Technical Institutes		120,465.00		120,465.00
568 Tuition To Private Residential Rehabilitative Institutions (PRRI) [In-State] and Detention Centers	26,135.94	26,135.93		52,271.87
<b>Total Other Purchased Services</b>	<b>\$15,032,822.47</b>	<b>\$15,152,016.72</b>		<b>\$30,184,839.19</b>
<b>600 Supplies</b>				
610 General Supplies	116,380.97	110,011.84	101,580.30	327,973.11
630 Food	2,407.76	5,440.50	643.24	8,491.50
640 Books and Periodicals	75,798.10	31,973.83	289,787.02	397,558.95
650 Supplies & Fees – Technology Related	10,351.00	11,901.98	1,175,775.40	1,198,028.38
<b>Total Supplies</b>	<b>\$204,937.83</b>	<b>\$159,328.15</b>	<b>\$1,567,785.96</b>	<b>\$1,932,051.94</b>
<b>700 Property</b>				
752 Capital Equipment – Original and Additional		4,497.00		4,497.00
762 Capitalized Equipment - Replacement	10,884.17	23,765.65		34,649.82
<b>Total Property</b>	<b>\$10,884.17</b>	<b>\$28,262.65</b>		<b>\$39,146.82</b>
<b>800 Other Objects</b>				

LEA : 124151902 Coatesville Area SD

Printed 12/20/2022 12:07:59 PM

General Fund (10)

1100 Regular Programs – Elementary / Secondary

800 Other Objects

810 Dues and Fees

890 Miscellaneous Expenditures

Total Other Objects

Total 1100 Regular Programs – Elementary / Secondary

Elementary

Secondary

Federal

Total

547.50

14.40

561.90

5,127.48

3,869.22

8,996.70

\$5,674.98

\$3,883.62

\$9,558.60

\$34,924,367.25

\$32,148,183.51

\$4,410,390.10

\$71,482,940.86

**General Fund (10)**

**1110 Regular Programs**

	<u>Elementary</u>	<u>Secondary</u>	<u>Federal</u>	<u>Total</u>
<b>100 Personnel Services – Salaries</b>				
100 Personnel Services – Salaries	11,976,820.29	10,252,513.47		22,229,333.76
<b>Total Personnel Services – Salaries</b>	<b>\$11,976,820.29</b>	<b>\$10,252,513.47</b>		<b>\$22,229,333.76</b>
<b>200 Personnel Services – Employee Benefits</b>				
210 Group Insurance – Contracted Provider	30,340.08	25,570.95		55,911.03
220 Social Security Contributions	885,495.10	756,348.58		1,641,843.68
230 PSERS Retirement Contributions	4,190,586.67	3,572,189.69		7,762,776.36
250 Unemployment Compensation	830.50	(353.11)		477.39
260 Workers' Compensation	50,697.72	43,519.34		94,217.06
270 Group Insurance – Self-Insurance	2,112,372.65	1,806,077.03		3,918,449.68
292 Health Savings Accounts	1,800.00	900.00		2,700.00
<b>Total Personnel Services – Employee Benefits</b>	<b>\$7,272,122.72</b>	<b>\$6,204,252.48</b>		<b>\$13,476,375.20</b>
<b>300 Purchased Professional and Technical Services</b>				
323 Professional Educational Services – Other Educational Agencies	2,335.34	12,667.50		15,002.84
329 Professional Educational Services – Other	417,479.45	328,622.07		746,101.52
330 Other Professional Services	1,290.00	1,290.00		2,580.00
390 Other Purchased Professional and Technical Services		600.00		600.00
<b>Total Purchased Professional and Technical Services</b>	<b>\$421,104.79</b>	<b>\$343,179.57</b>		<b>\$764,284.36</b>
<b>400 Purchased Property Services</b>				
430 Repairs and Maintenance Services		954.85		954.85
440 Rentals		3,792.00		3,792.00
<b>Total Purchased Property Services</b>		<b>\$4,746.85</b>		<b>\$4,746.85</b>
<b>500 Other Purchased Services</b>				
510 Student Transportation Services	8,099.68	6,446.90		14,546.58
550 Printing and Binding		382.03		382.03
561 Tuition To Other School Districts Within the State	4,049.86	4,049.87		8,099.73
562 Tuition To Pennsylvania Charter Schools	14,994,536.99	14,994,536.99		29,989,073.98
566 Tuition To Institutions of Higher Education and Technical Institutes		120,465.00		120,465.00
568 Tuition To Private Residential Rehabilitative Institutions (PRRI) [In-State] and Detention Centers	26,135.94	26,135.93		52,271.87
<b>Total Other Purchased Services</b>	<b>\$15,032,822.47</b>	<b>\$15,152,016.72</b>		<b>\$30,184,839.19</b>
<b>600 Supplies</b>				
610 General Supplies	116,380.97	110,011.84		226,392.81
630 Food	2,407.76	5,440.50		7,848.26
640 Books and Periodicals	75,798.10	31,973.83		107,771.93
650 Supplies & Fees – Technology Related	10,351.00	11,901.98		22,252.98
<b>Total Supplies</b>	<b>\$204,937.83</b>	<b>\$159,328.15</b>		<b>\$364,265.98</b>
<b>700 Property</b>				
752 Capital Equipment – Original and Additional		4,497.00		4,497.00
762 Capitalized Equipment - Replacement	10,884.17	23,765.65		34,649.82
<b>Total Property</b>	<b>\$10,884.17</b>	<b>\$28,262.65</b>		<b>\$39,146.82</b>
<b>800 Other Objects</b>				



LEA : 124151902 Coatesville Area SD

Printed 12/20/2022 12:07:59 PM

General Fund (10)

1110 Regular Programs

800 Other Objects

810 Dues and Fees

890 Miscellaneous Expenditures

Total Other Objects

Total 1110 Regular Programs

Elementary

Secondary

Federal

Total

547.50

14.40

561.90

5,127.48

3,869.22

8,996.70

\$5,674.98

\$3,883.62

\$9,558.60

\$34,924,367.25

\$32,148,183.51

\$67,072,550.76

**General Fund (10)**

**1190 Federally-Funded Regular Programs**

	<u>Elementary</u>	<u>Secondary</u>	<u>Federal</u>	<u>Total</u>
<b>100 Personnel Services – Salaries</b>				
100 Personnel Services – Salaries			1,639,867.80	1,639,867.80
<b>Total Personnel Services – Salaries</b>			<b>\$1,639,867.80</b>	<b>\$1,639,867.80</b>
<b>200 Personnel Services – Employee Benefits</b>				
210 Group Insurance – Contracted Provider			2,559.91	2,559.91
220 Social Security Contributions			122,340.16	122,340.16
230 PSERS Retirement Contributions			572,384.74	572,384.74
250 Unemployment Compensation			2,015.73	2,015.73
260 Workers' Compensation			6,725.41	6,725.41
270 Group Insurance – Self-Insurance			193,675.82	193,675.82
<b>Total Personnel Services – Employee Benefits</b>			<b>\$899,701.77</b>	<b>\$899,701.77</b>
<b>300 Purchased Professional and Technical Services</b>				
322 Professional Educational Services – lus			17,112.56	17,112.56
330 Other Professional Services			80,154.62	80,154.62
390 Other Purchased Professional and Technical Services			147,045.50	147,045.50
<b>Total Purchased Professional and Technical Services</b>			<b>\$244,312.68</b>	<b>\$244,312.68</b>
<b>400 Purchased Property Services</b>				
430 Repairs and Maintenance Services			58,721.89	58,721.89
<b>Total Purchased Property Services</b>			<b>\$58,721.89</b>	<b>\$58,721.89</b>
<b>600 Supplies</b>				
610 General Supplies			101,580.30	101,580.30
630 Food			643.24	643.24
640 Books and Periodicals			289,787.02	289,787.02
650 Supplies & Fees – Technology Related			1,175,775.40	1,175,775.40
<b>Total Supplies</b>			<b>\$1,567,785.96</b>	<b>\$1,567,785.96</b>
<b>Total 1190 Federally-Funded Regular Programs</b>			<b>\$4,410,390.10</b>	<b>\$4,410,390.10</b>

**General Fund (10)**

**1200 Special Programs – Elementary / Secondary**

	<u>Elementary</u>	<u>Secondary</u>	<u>Federal</u>	<u>Total</u>
<b>100 Personnel Services – Salaries</b>				
100 Personnel Services – Salaries	2,614,990.55	2,395,496.60	181,290.93	5,191,778.08
<b>Total Personnel Services – Salaries</b>	<b>\$2,614,990.55</b>	<b>\$2,395,496.60</b>	<b>\$181,290.93</b>	<b>\$5,191,778.08</b>
<b>200 Personnel Services – Employee Benefits</b>				
210 Group Insurance – Contracted Provider	7,020.59	6,157.50	301.74	13,479.83
220 Social Security Contributions	193,622.15	178,494.48	13,746.86	385,863.49
230 PSERS Retirement Contributions	910,039.64	832,343.71	63,063.46	1,805,446.81
250 Unemployment Compensation	1,066.15	946.40	353.05	2,365.60
260 Workers' Compensation	11,138.13	10,192.46	730.18	22,060.77
270 Group Insurance – Self-Insurance	461,744.82	384,921.79	5,616.06	852,282.67
292 Health Savings Accounts	5,400.00	9,900.00		15,300.00
<b>Total Personnel Services – Employee Benefits</b>	<b>\$1,590,031.48</b>	<b>\$1,422,956.34</b>	<b>\$83,811.35</b>	<b>\$3,096,799.17</b>
<b>300 Purchased Professional and Technical Services</b>				
322 Professional Educational Services – Ius	6,293,503.50	6,293,503.51	1,371,896.22	13,958,903.23
323 Professional Educational Services – Other Educational Agencies	6,611.52	6,611.51		13,223.03
329 Professional Educational Services – Other	2,913,314.45	2,913,314.45	283,964.90	6,110,593.80
330 Other Professional Services	7,940.28	7,940.30		15,880.58
<b>Total Purchased Professional and Technical Services</b>	<b>\$9,221,369.75</b>	<b>\$9,221,369.77</b>	<b>\$1,655,861.12</b>	<b>\$20,098,600.64</b>
<b>500 Other Purchased Services</b>				
510 Student Transportation Services	700.68	700.69		1,401.37
561 Tuition To Other School Districts Within the State	102,512.64	102,512.65		205,025.29
562 Tuition To Pennsylvania Charter Schools	11,259,847.10	11,259,847.11		22,519,694.21
563 Tuition To Nonpublic Schools	317,154.70	317,154.70		634,309.40
567 Tuition To Approved Private Schools (APS) and PA Chartered Schools for the Deaf and Blind	1,286,706.88	1,329,868.13		2,616,575.01
568 Tuition To Private Residential Rehabilitative Institutions (PRRI) [In-State] and Detention Centers	440.00	440.00		880.00
594 IU Payment By Withholding for Institutionalized Children's Programs – Special Classes	2,100.61	2,100.61		4,201.22
<b>Total Other Purchased Services</b>	<b>\$12,969,462.61</b>	<b>\$13,012,623.89</b>		<b>\$25,982,086.50</b>
<b>600 Supplies</b>				
610 General Supplies	2,327.99	2,327.99	14,026.71	18,682.69
630 Food	50.12	50.11		100.23
640 Books and Periodicals	1,605.75	857.79	1,187.89	3,651.43
650 Supplies & Fees – Technology Related	12,459.28	12,459.27	68,678.98	93,597.53
<b>Total Supplies</b>	<b>\$16,443.14</b>	<b>\$15,695.16</b>	<b>\$83,893.58</b>	<b>\$116,031.88</b>
<b>800 Other Objects</b>				
890 Miscellaneous Expenditures	15.00	15.00		30.00
<b>Total Other Objects</b>	<b>\$15.00</b>	<b>\$15.00</b>		<b>\$30.00</b>
<b>Total 1200 Special Programs – Elementary / Secondary</b>	<b>\$26,412,312.53</b>	<b>\$26,068,156.76</b>	<b>\$2,004,856.98</b>	<b>\$54,485,326.27</b>

**General Fund (10)**

**1210 Life Skills Support**

	<u>Elementary</u>	<u>Secondary</u>	<u>Federal</u>	<u>Total</u>
<b>100 Personnel Services – Salaries</b>				
100 Personnel Services – Salaries	120,273.93	167,925.66		288,199.59
<b>Total Personnel Services – Salaries</b>	<b>\$120,273.93</b>	<b>\$167,925.66</b>		<b>\$288,199.59</b>
<b>200 Personnel Services – Employee Benefits</b>				
210 Group Insurance – Contracted Provider	291.84	329.61		621.45
220 Social Security Contributions	9,065.76	12,745.44		21,811.20
230 PSERS Retirement Contributions	41,709.19	58,079.37		99,788.56
250 Unemployment Compensation	26.30	42.41		68.71
260 Workers' Compensation	511.51	726.65		1,238.16
270 Group Insurance – Self-Insurance	8,537.40	8,537.41		17,074.81
<b>Total Personnel Services – Employee Benefits</b>	<b>\$60,142.00</b>	<b>\$80,460.89</b>		<b>\$140,602.89</b>
<b>300 Purchased Professional and Technical Services</b>				
329 Professional Educational Services – Other	225.00	225.00		450.00
<b>Total Purchased Professional and Technical Services</b>	<b>\$225.00</b>	<b>\$225.00</b>		<b>\$450.00</b>
<b>600 Supplies</b>				
610 General Supplies	431.86	431.86		863.72
630 Food	50.12	50.11		100.23
<b>Total Supplies</b>	<b>\$481.98</b>	<b>\$481.97</b>		<b>\$963.95</b>
<b>Total 1210 Life Skills Support</b>	<b>\$181,122.91</b>	<b>\$249,093.52</b>		<b>\$430,216.43</b>

LEA : 124151902 Coatesville Area SD

Printed 12/20/2022 12:07:59 PM

**General Fund (10)**

**1220 Sensory Support**

**300 Purchased Professional and Technical Services**

322 Professional Educational Services – Ius

<u>Elementary</u>	<u>Secondary</u>	<u>Federal</u>	<u>Total</u>
-------------------	------------------	----------------	--------------

		4,095.00	4,095.00
--	--	----------	----------

**Total Purchased Professional and Technical Services**

		<b>\$4,095.00</b>	<b>\$4,095.00</b>
--	--	-------------------	-------------------

**500 Other Purchased Services**

567 Tuition To Approved Private Schools (APS) and PA Chartered Schools for the Deaf and Blind

	43,161.25		43,161.25
--	-----------	--	-----------

**Total Other Purchased Services**

	<b>\$43,161.25</b>		<b>\$43,161.25</b>
--	--------------------	--	--------------------

**600 Supplies**

650 Supplies & Fees – Technology Related

1,932.02	1,932.02		3,864.04
----------	----------	--	----------

**Total Supplies**

<b>\$1,932.02</b>	<b>\$1,932.02</b>		<b>\$3,864.04</b>
-------------------	-------------------	--	-------------------

**Total 1220 Sensory Support**

<b>\$1,932.02</b>	<b>\$45,093.27</b>	<b>\$4,095.00</b>	<b>\$51,120.29</b>
-------------------	--------------------	-------------------	--------------------

**General Fund (10)**

**1230 Emotional Support**

	<u>Elementary</u>	<u>Secondary</u>	<u>Federal</u>	<u>Total</u>
<b>100 Personnel Services – Salaries</b>				
100 Personnel Services – Salaries	142,593.89	102,355.26		244,949.15
<b>Total Personnel Services – Salaries</b>	<b>\$142,593.89</b>	<b>\$102,355.26</b>		<b>\$244,949.15</b>
<b>200 Personnel Services – Employee Benefits</b>				
210 Group Insurance – Contracted Provider	374.12	286.81		660.93
220 Social Security Contributions	10,548.67	7,812.14		18,360.81
230 PSERS Retirement Contributions	48,174.39	35,762.87		83,937.26
250 Unemployment Compensation	35.65	35.80		71.45
260 Workers' Compensation	646.44	438.71		1,085.15
270 Group Insurance – Self-Insurance	21,544.14	6,886.94		28,431.08
292 Health Savings Accounts		900.00		900.00
<b>Total Personnel Services – Employee Benefits</b>	<b>\$81,323.41</b>	<b>\$52,123.27</b>		<b>\$133,446.68</b>
<b>600 Supplies</b>				
610 General Supplies	559.35	559.35		1,118.70
<b>Total Supplies</b>	<b>\$559.35</b>	<b>\$559.35</b>		<b>\$1,118.70</b>
<b>Total 1230 Emotional Support</b>	<b>\$224,476.65</b>	<b>\$155,037.88</b>		<b>\$379,514.53</b>

**General Fund (10)**

**1240 Academic Support**

	<u>Elementary</u>	<u>Secondary</u>	<u>Federal</u>	<u>Total</u>
<b>100 Personnel Services – Salaries</b>				
100 Personnel Services – Salaries	2,260,100.65	2,060,642.27		4,320,742.92
<b>Total Personnel Services – Salaries</b>	<b>\$2,260,100.65</b>	<b>\$2,060,642.27</b>		<b>\$4,320,742.92</b>
<b>200 Personnel Services – Employee Benefits</b>				
210 Group Insurance – Contracted Provider	6,308.31	5,494.76		11,803.07
220 Social Security Contributions	167,015.11	153,038.87		320,053.98
230 PSERS Retirement Contributions	788,020.91	715,939.56		1,503,960.47
250 Unemployment Compensation	940.90	853.64		1,794.54
260 Workers' Compensation	9,599.54	8,764.39		18,363.93
270 Group Insurance – Self-Insurance	421,961.02	359,795.16		781,756.18
292 Health Savings Accounts	4,500.00	8,100.00		12,600.00
<b>Total Personnel Services – Employee Benefits</b>	<b>\$1,398,345.79</b>	<b>\$1,251,986.38</b>		<b>\$2,650,332.17</b>
<b>300 Purchased Professional and Technical Services</b>				
329 Professional Educational Services – Other	2,913,089.45	2,913,089.45	283,964.90	6,110,143.80
<b>Total Purchased Professional and Technical Services</b>	<b>\$2,913,089.45</b>	<b>\$2,913,089.45</b>	<b>\$283,964.90</b>	<b>\$6,110,143.80</b>
<b>500 Other Purchased Services</b>				
510 Student Transportation Services	700.68	700.69		1,401.37
563 Tuition To Nonpublic Schools	497.50	497.50		995.00
<b>Total Other Purchased Services</b>	<b>\$1,198.18</b>	<b>\$1,198.19</b>		<b>\$2,396.37</b>
<b>600 Supplies</b>				
610 General Supplies	1,325.98	1,325.99		2,651.97
640 Books and Periodicals	1,605.75	857.79		2,463.54
650 Supplies & Fees – Technology Related	10,127.76	10,127.77		20,255.53
<b>Total Supplies</b>	<b>\$13,059.49</b>	<b>\$12,311.55</b>		<b>\$25,371.04</b>
<b>800 Other Objects</b>				
890 Miscellaneous Expenditures	15.00	15.00		30.00
<b>Total Other Objects</b>	<b>\$15.00</b>	<b>\$15.00</b>		<b>\$30.00</b>
<b>Total 1240 Academic Support</b>	<b>\$6,585,808.56</b>	<b>\$6,239,242.84</b>	<b>\$283,964.90</b>	<b>\$13,109,016.30</b>

**General Fund (10)**

	<u>Elementary</u>	<u>Secondary</u>	<u>Federal</u>	<u>Total</u>
<b>1241 Learning Support – Public</b>				
<b>100 Personnel Services – Salaries</b>				
100 Personnel Services – Salaries	2,160,069.65	1,960,611.27		4,120,680.92
<b>Total Personnel Services – Salaries</b>	<b>\$2,160,069.65</b>	<b>\$1,960,611.27</b>		<b>\$4,120,680.92</b>
<b>200 Personnel Services – Employee Benefits</b>				
210 Group Insurance – Contracted Provider	6,102.14	5,288.59		11,390.73
220 Social Security Contributions	159,960.58	145,712.41		305,672.99
230 PSERS Retirement Contributions	753,349.66	681,268.31		1,434,617.97
250 Unemployment Compensation	924.05	836.06		1,760.11
260 Workers' Compensation	9,182.85	8,347.70		17,530.55
270 Group Insurance – Self-Insurance	402,211.57	345,091.08		747,302.65
292 Health Savings Accounts	4,500.00	8,100.00		12,600.00
<b>Total Personnel Services – Employee Benefits</b>	<b>\$1,336,230.85</b>	<b>\$1,194,644.15</b>		<b>\$2,530,875.00</b>
<b>300 Purchased Professional and Technical Services</b>				
329 Professional Educational Services – Other	2,913,089.45	2,913,089.45	283,964.90	6,110,143.80
<b>Total Purchased Professional and Technical Services</b>	<b>\$2,913,089.45</b>	<b>\$2,913,089.45</b>	<b>\$283,964.90</b>	<b>\$6,110,143.80</b>
<b>500 Other Purchased Services</b>				
510 Student Transportation Services	517.32	517.32		1,034.64
<b>Total Other Purchased Services</b>	<b>\$517.32</b>	<b>\$517.32</b>		<b>\$1,034.64</b>
<b>600 Supplies</b>				
610 General Supplies	1,325.98	1,325.99		2,651.97
640 Books and Periodicals	857.79	857.79		1,715.58
650 Supplies & Fees – Technology Related	10,127.76	10,127.77		20,255.53
<b>Total Supplies</b>	<b>\$12,311.53</b>	<b>\$12,311.55</b>		<b>\$24,623.08</b>
<b>Total 1241 Learning Support – Public</b>	<b>\$6,422,218.80</b>	<b>\$6,081,173.74</b>	<b>\$283,964.90</b>	<b>\$12,787,357.44</b>



LEA : 124151902 Coatesville Area SD

Printed 12/20/2022 12:07:59 PM

**General Fund (10)**

**1243 Gifted Support**

	<u>Elementary</u>	<u>Secondary</u>	<u>Federal</u>	<u>Total</u>
<b>100 Personnel Services – Salaries</b>				
100 Personnel Services – Salaries	100,031.00	100,031.00		200,062.00
<b>Total Personnel Services – Salaries</b>	<b>\$100,031.00</b>	<b>\$100,031.00</b>		<b>\$200,062.00</b>
<b>200 Personnel Services – Employee Benefits</b>				
210 Group Insurance – Contracted Provider	206.17	206.17		412.34
220 Social Security Contributions	7,054.53	7,326.46		14,380.99
230 PSERS Retirement Contributions	34,671.25	34,671.25		69,342.50
250 Unemployment Compensation	16.85	17.58		34.43
260 Workers' Compensation	416.69	416.69		833.38
270 Group Insurance – Self-Insurance	19,749.45	14,704.08		34,453.53
<b>Total Personnel Services – Employee Benefits</b>	<b>\$62,114.94</b>	<b>\$57,342.23</b>		<b>\$119,457.17</b>
<b>500 Other Purchased Services</b>				
510 Student Transportation Services	183.36	183.37		366.73
563 Tuition To Nonpublic Schools	497.50	497.50		995.00
<b>Total Other Purchased Services</b>	<b>\$680.86</b>	<b>\$680.87</b>		<b>\$1,361.73</b>
<b>600 Supplies</b>				
640 Books and Periodicals	747.96			747.96
<b>Total Supplies</b>	<b>\$747.96</b>			<b>\$747.96</b>
<b>800 Other Objects</b>				
890 Miscellaneous Expenditures	15.00	15.00		30.00
<b>Total Other Objects</b>	<b>\$15.00</b>	<b>\$15.00</b>		<b>\$30.00</b>
<b>Total 1243 Gifted Support</b>	<b>\$163,589.76</b>	<b>\$158,069.10</b>		<b>\$321,658.86</b>

LEA : 124151902 Coatesville Area SD

Printed 12/20/2022 12:07:59 PM

General Fund (10)

1260 Physical Support

Elementary

Secondary

Federal

Total

600 Supplies

610 General Supplies

4,045.02

4,045.02

**Total Supplies**

**\$4,045.02**

**\$4,045.02**

**Total 1260 Physical Support**

**\$4,045.02**

**\$4,045.02**

**General Fund (10)**

**1270 Multi-Handicapped Support**

	<u>Elementary</u>	<u>Secondary</u>	<u>Federal</u>	<u>Total</u>
<b>300 <u>Purchased Professional and Technical Services</u></b>				
322 Professional Educational Services – lus			1,046,840.38	1,046,840.38
<b>Total Purchased Professional and Technical Services</b>			<b>\$1,046,840.38</b>	<b>\$1,046,840.38</b>
<b>600 <u>Supplies</u></b>				
610 General Supplies	10.80	10.79		21.59
650 Supplies & Fees – Technology Related	374.50	374.49		748.99
<b>Total Supplies</b>	<b>\$385.30</b>	<b>\$385.28</b>		<b>\$770.58</b>
<b>Total 1270 Multi-Handicapped Support</b>	<b>\$385.30</b>	<b>\$385.28</b>	<b>\$1,046,840.38</b>	<b>\$1,047,610.96</b>

LEA : 124151902 Coatesville Area SD

Printed 12/20/2022 12:07:59 PM

**General Fund (10)**

**1290 Special Programs - Other Support**

	<u>Elementary</u>	<u>Secondary</u>	<u>Federal</u>	<u>Total</u>
<b>100 Personnel Services – Salaries</b>				
100 Personnel Services – Salaries	92,022.08	64,573.41	181,290.93	337,886.42
<b>Total Personnel Services – Salaries</b>	<b>\$92,022.08</b>	<b>\$64,573.41</b>	<b>\$181,290.93</b>	<b>\$337,886.42</b>
<b>200 Personnel Services – Employee Benefits</b>				
210 Group Insurance – Contracted Provider	46.32	46.32	301.74	394.38
220 Social Security Contributions	6,992.61	4,898.03	13,746.86	25,637.50
230 PSERS Retirement Contributions	32,135.15	22,561.91	63,063.46	117,760.52
250 Unemployment Compensation	63.30	14.55	353.05	430.90
260 Workers' Compensation	380.64	262.71	730.18	1,373.53
270 Group Insurance – Self-Insurance	9,702.26	9,702.28	5,616.06	25,020.60
292 Health Savings Accounts	900.00	900.00		1,800.00
<b>Total Personnel Services – Employee Benefits</b>	<b>\$50,220.28</b>	<b>\$38,385.80</b>	<b>\$83,811.35</b>	<b>\$172,417.43</b>
<b>300 Purchased Professional and Technical Services</b>				
322 Professional Educational Services – Ius	6,293,503.50	6,293,503.51	320,960.84	12,907,967.85
323 Professional Educational Services – Other Educational Agencies	6,611.52	6,611.51		13,223.03
330 Other Professional Services	7,940.28	7,940.30		15,880.58
<b>Total Purchased Professional and Technical Services</b>	<b>\$6,308,055.30</b>	<b>\$6,308,055.32</b>	<b>\$320,960.84</b>	<b>\$12,937,071.46</b>
<b>500 Other Purchased Services</b>				
561 Tuition To Other School Districts Within the State	102,512.64	102,512.65		205,025.29
562 Tuition To Pennsylvania Charter Schools	11,259,847.10	11,259,847.11		22,519,694.21
563 Tuition To Nonpublic Schools	316,657.20	316,657.20		633,314.40
567 Tuition To Approved Private Schools (APS) and PA Chartered Schools for the Deaf and Blind	1,286,706.88	1,286,706.88		2,573,413.76
568 Tuition To Private Residential Rehabilitative Institutions (PRRI) [In-State] and Detention Centers	440.00	440.00		880.00
594 IU Payment By Withholding for Institutionalized Children's Programs – Special Classes	2,100.61	2,100.61		4,201.22
<b>Total Other Purchased Services</b>	<b>\$12,968,264.43</b>	<b>\$12,968,264.45</b>		<b>\$25,936,528.88</b>
<b>600 Supplies</b>				
610 General Supplies			9,981.69	9,981.69
640 Books and Periodicals			1,187.89	1,187.89
650 Supplies & Fees – Technology Related	25.00	24.99	68,678.98	68,728.97
<b>Total Supplies</b>	<b>\$25.00</b>	<b>\$24.99</b>	<b>\$79,848.56</b>	<b>\$79,898.55</b>
<b>Total 1290 Special Programs - Other Support</b>	<b>\$19,418,587.09</b>	<b>\$19,379,303.97</b>	<b>\$665,911.68</b>	<b>\$39,463,802.74</b>

**General Fund (10)**

**1300 Vocational Education**

	<u>Elementary</u>	<u>Secondary</u>	<u>Federal</u>	<u>Total</u>
<b>100 Personnel Services – Salaries</b>				
100 Personnel Services – Salaries		142,090.82		142,090.82
<b>Total Personnel Services – Salaries</b>		<b>\$142,090.82</b>		<b>\$142,090.82</b>
<b>200 Personnel Services – Employee Benefits</b>				
210 Group Insurance – Contracted Provider		376.46		376.46
220 Social Security Contributions		10,729.09		10,729.09
230 PSERS Retirement Contributions		49,646.43		49,646.43
250 Unemployment Compensation		36.15		36.15
260 Workers' Compensation		618.14		618.14
270 Group Insurance – Self-Insurance		13,680.12		13,680.12
<b>Total Personnel Services – Employee Benefits</b>		<b>\$75,086.39</b>		<b>\$75,086.39</b>
<b>500 Other Purchased Services</b>				
564 Tuition To Career and Technology Centers		3,405,888.00		3,405,888.00
<b>Total Other Purchased Services</b>		<b>\$3,405,888.00</b>		<b>\$3,405,888.00</b>
<b>600 Supplies</b>				
610 General Supplies		9,317.82		9,317.82
<b>Total Supplies</b>		<b>\$9,317.82</b>		<b>\$9,317.82</b>
<b>Total 1300 Vocational Education</b>		<b>\$3,632,383.03</b>		<b>\$3,632,383.03</b>

**General Fund (10)**

	<u>Elementary</u>	<u>Secondary</u>	<u>Federal</u>	<u>Total</u>
<b>1400 Other Instructional Programs – Elementary / Secondary</b>				
<b>100 Personnel Services – Salaries</b>				
100 Personnel Services – Salaries	15,427.50	4,108.50	3,093.75	22,629.75
<b>Total Personnel Services – Salaries</b>	<b>\$15,427.50</b>	<b>\$4,108.50</b>	<b>\$3,093.75</b>	<b>\$22,629.75</b>
<b>200 Personnel Services – Employee Benefits</b>				
220 Social Security Contributions	1,180.22	308.17	229.42	1,717.81
230 PSERS Retirement Contributions	5,390.32	1,435.50	1,080.99	7,906.81
250 Unemployment Compensation	15.69		4.63	20.32
260 Workers' Compensation	63.08	20.38	10.68	94.14
<b>Total Personnel Services – Employee Benefits</b>	<b>\$6,649.31</b>	<b>\$1,764.05</b>	<b>\$1,325.72</b>	<b>\$9,739.08</b>
<b>300 Purchased Professional and Technical Services</b>				
329 Professional Educational Services – Other	1,245.00	1,245.00		2,490.00
<b>Total Purchased Professional and Technical Services</b>	<b>\$1,245.00</b>	<b>\$1,245.00</b>		<b>\$2,490.00</b>
<b>500 Other Purchased Services</b>				
561 Tuition To Other School Districts Within the State	31,857.14	31,857.15		63,714.29
<b>Total Other Purchased Services</b>	<b>\$31,857.14</b>	<b>\$31,857.15</b>		<b>\$63,714.29</b>
<b>600 Supplies</b>				
610 General Supplies	2,001.14	2,001.13		4,002.27
<b>Total Supplies</b>	<b>\$2,001.14</b>	<b>\$2,001.13</b>		<b>\$4,002.27</b>
<b>Total 1400 Other Instructional Programs – Elementary / Secondary</b>	<b>\$57,180.09</b>	<b>\$40,975.83</b>	<b>\$4,419.47</b>	<b>\$102,575.39</b>

General Fund (10)

1420 Summer School

300 Purchased Professional and Technical Services

329 Professional Educational Services – Other

Elementary

Secondary

Federal

Total

1,245.00

1,245.00

2,490.00

**Total Purchased Professional and Technical Services**

**\$1,245.00**

**\$1,245.00**

**\$2,490.00**

600 Supplies

610 General Supplies

2,001.14

2,001.13

4,002.27

**Total Supplies**

**\$2,001.14**

**\$2,001.13**

**\$4,002.27**

**Total 1420 Summer School**

**\$3,246.14**

**\$3,246.13**

**\$6,492.27**

LEA : 124151902 Coatesville Area SD

Printed 12/20/2022 12:07:59 PM

General Fund (10)

1430 Homebound Instruction

100 Personnel Services – Salaries

	<u>Elementary</u>	<u>Secondary</u>	<u>Federal</u>	<u>Total</u>
100 Personnel Services – Salaries	14,767.50	2,838.00		17,605.50
<b>Total Personnel Services – Salaries</b>	<b>\$14,767.50</b>	<b>\$2,838.00</b>		<b>\$17,605.50</b>

200 Personnel Services – Employee Benefits

220 Social Security Contributions	1,129.73	211.00		1,340.73
230 PSERS Retirement Contributions	5,159.72	991.59		6,151.31
250 Unemployment Compensation	14.27			14.27
260 Workers' Compensation	57.11	8.38		65.49
<b>Total Personnel Services – Employee Benefits</b>	<b>\$6,360.83</b>	<b>\$1,210.97</b>		<b>\$7,571.80</b>
<b>Total 1430 Homebound Instruction</b>	<b>\$21,128.33</b>	<b>\$4,048.97</b>		<b>\$25,177.30</b>



LEA : 124151902 Coatesville Area SD

Printed 12/20/2022 12:07:59 PM

General Fund (10)

	<u>Elementary</u>	<u>Secondary</u>	<u>Federal</u>	<u>Total</u>
<b>1440 Alternative Regular Education Programs</b>				
<b>500 Other Purchased Services</b>				
561 Tuition To Other School Districts Within the State	31,857.14	31,857.15		63,714.29
<b>Total Other Purchased Services</b>	<b>\$31,857.14</b>	<b>\$31,857.15</b>		<b>\$63,714.29</b>
<b>Total 1440 Alternative Regular Education Programs</b>	<b>\$31,857.14</b>	<b>\$31,857.15</b>		<b>\$63,714.29</b>

LEA : 124151902 Coatesville Area SD

Printed 12/20/2022 12:07:59 PM

General Fund (10)

1441 Adjudicated / Court-Placed Programs

500 Other Purchased Services

561 Tuition To Other School Districts Within the State

Total Other Purchased Services

Total 1441 Adjudicated / Court-Placed Programs

	<u>Elementary</u>	<u>Secondary</u>	<u>Federal</u>	<u>Total</u>
561 Tuition To Other School Districts Within the State	31,857.14	31,857.15		63,714.29
<b>Total Other Purchased Services</b>	<b>\$31,857.14</b>	<b>\$31,857.15</b>		<b>\$63,714.29</b>
<b>Total 1441 Adjudicated / Court-Placed Programs</b>	<b>\$31,857.14</b>	<b>\$31,857.15</b>		<b>\$63,714.29</b>

General Fund (10)

	<u>Elementary</u>	<u>Secondary</u>	<u>Federal</u>	<u>Total</u>
<b>1450 Instructional Programs Outside the Established School Day</b>				
<b>100 Personnel Services – Salaries</b>				
100 Personnel Services – Salaries			3,093.75	3,093.75
<b>Total Personnel Services – Salaries</b>			<b>\$3,093.75</b>	<b>\$3,093.75</b>
<b>200 Personnel Services – Employee Benefits</b>				
220 Social Security Contributions			229.42	229.42
230 PSERS Retirement Contributions			1,080.99	1,080.99
250 Unemployment Compensation			4.63	4.63
260 Workers' Compensation			10.68	10.68
<b>Total Personnel Services – Employee Benefits</b>			<b>\$1,325.72</b>	<b>\$1,325.72</b>
<b>Total 1450 Instructional Programs Outside the Established School Day</b>			<b>\$4,419.47</b>	<b>\$4,419.47</b>

LEA : 124151902 Coatesville Area SD

Printed 12/20/2022 12:07:59 PM

**General Fund (10)**

	<u>Elementary</u>	<u>Secondary</u>	<u>Federal</u>	<u>Total</u>
<b>1490 Additional Other Instructional Programs</b>				
<b>100 Personnel Services – Salaries</b>				
100 Personnel Services – Salaries	660.00	1,270.50		1,930.50
<b>Total Personnel Services – Salaries</b>	<b>\$660.00</b>	<b>\$1,270.50</b>		<b>\$1,930.50</b>
<b>200 Personnel Services – Employee Benefits</b>				
220 Social Security Contributions	50.49	97.17		147.66
230 PSERS Retirement Contributions	230.60	443.91		674.51
250 Unemployment Compensation	1.42			1.42
260 Workers' Compensation	5.97	12.00		17.97
<b>Total Personnel Services – Employee Benefits</b>	<b>\$288.48</b>	<b>\$553.08</b>		<b>\$841.56</b>
<b>Total 1490 Additional Other Instructional Programs</b>	<b>\$948.48</b>	<b>\$1,823.58</b>		<b>\$2,772.06</b>

General Fund (10)

1500 Nonpublic School Programs

Elementary

Secondary

Federal

Total

300 Purchased Professional and Technical Services

360 Employee Training and Development Services

113,548.48

113,548.48

**Total Purchased Professional and Technical Services**

**\$113,548.48**

**\$113,548.48**

600 Supplies

650 Supplies & Fees – Technology Related

18,433.25

18,433.25

**Total Supplies**

**\$18,433.25**

**\$18,433.25**

**Total 1500 Nonpublic School Programs**

**\$131,981.73**

**\$131,981.73**

General Fund (10)

2000 Support Services

Total

100 Personnel Services – Salaries

100 Personnel Services – Salaries 10,120,058.36

Total Personnel Services – Salaries \$10,120,058.36

200 Personnel Services – Employee Benefits

210 Group Insurance – Contracted Provider 32,073.95

220 Social Security Contributions 745,742.49

230 PSERS Retirement Contributions 3,430,245.81

240 Tuition Reimbursement 230,697.13

250 Unemployment Compensation 3,233.83

260 Workers' Compensation 42,467.65

270 Group Insurance – Self-Insurance 1,783,633.60

292 Health Savings Accounts 134,452.43

Total Personnel Services – Employee Benefits \$6,402,546.89

300 Purchased Professional and Technical Services

310 Official / Administrative Services 73,688.75

322 Professional Educational Services – Ius 245,887.44

330 Other Professional Services 1,592,507.99

340 Technical Services 591,802.16

350 Security / Safety Services 69,503.22

360 Employee Training and Development Services 30,741.98

390 Other Purchased Professional and Technical Services 353,160.60

Total Purchased Professional and Technical Services \$2,957,292.14

400 Purchased Property Services

410 Cleaning Services 1,730,558.92

420 Utility Services 253,961.53

430 Repairs and Maintenance Services 1,133,575.69

440 Rentals 596,226.10

460 Extermination Services 9,357.00

490 Other Purchased Property Services 4,503.33

Total Purchased Property Services \$3,728,182.57

500 Other Purchased Services

513 Contracted Carriers 9,909,557.20

516 Student Transportation Services From the IU 19,472.51

520 Insurance – General 159,038.00

522 Automotive Liability Insurance 17,204.00

523 General Property and Liability Insurance 1,203,733.67

529 Other Insurance 223,244.00

530 Communications 459,829.88

549 Other Advertising/Public Relations 49,137.84

550 Printing and Binding 17,255.50

580 Travel 1,820.99

595 IU Payments By Withholding 47,445.34

Total Other Purchased Services \$12,107,738.93

LEA : 124151902 Coatesville Area SD

Printed 12/20/2022 12:08:03 PM

**General Fund (10)**

**2000 Support Services**

**Total**

**600 Supplies**

610 General Supplies	460,186.36
620 Energy	1,399,904.68
630 Food	7,730.52
640 Books and Periodicals	20,081.24
650 Supplies & Fees – Technology Related	510,255.76

<b>Total Supplies</b>	<b>\$2,398,158.56</b>
-----------------------	-----------------------

**700 Property**

752 Capital Equipment – Original and Additional	2,295.86
762 Capitalized Equipment - Replacement	18,269.20

<b>Total Property</b>	<b>\$20,565.06</b>
-----------------------	--------------------

**800 Other Objects**

810 Dues and Fees	368,490.50
820 Claims and Judgments Against the LEA	273,151.29
830 Interest	57,866.67
890 Miscellaneous Expenditures	33,623.49

<b>Total Other Objects</b>	<b>\$733,131.95</b>
----------------------------	---------------------

<b>Total 2000 Support Services</b>	<b>\$38,467,674.46</b>
------------------------------------	------------------------

**General Fund (10)**

**2100 Support Services – Students**

	<u>Elementary</u>	<u>Secondary</u>	<u>Federal</u>	<u>Total</u>
<b>100 Personnel Services – Salaries</b>				
100 Personnel Services – Salaries	804,686.01	1,029,201.49	70,225.00	2,191,618.29
<b>Total Personnel Services – Salaries</b>	<b>\$804,686.01</b>	<b>\$1,029,201.49</b>	<b>\$70,225.00</b>	<b>\$2,191,618.29</b>
<b>200 Personnel Services – Employee Benefits</b>				
210 Group Insurance – Contracted Provider	2,301.92	2,488.59	167.78	5,840.60
220 Social Security Contributions	59,537.80	76,145.58	5,349.26	162,474.29
230 PSERS Retirement Contributions	280,511.09	355,111.17	24,536.68	756,794.86
250 Unemployment Compensation	268.44	254.37	80.01	721.30
260 Workers' Compensation	3,414.73	4,351.06	293.67	9,256.93
270 Group Insurance – Self-Insurance	150,481.71	184,664.13	5,616.06	397,894.71
292 Health Savings Accounts	6,098.08	9,453.27		20,951.35
<b>Total Personnel Services – Employee Benefits</b>	<b>\$502,613.77</b>	<b>\$632,468.17</b>	<b>\$36,043.46</b>	<b>\$1,353,934.04</b>
<b>300 Purchased Professional and Technical Services</b>				
330 Other Professional Services	47,605.08	47,605.09		95,210.17
390 Other Purchased Professional and Technical Services	18,135.18	18,135.19		36,270.37
<b>Total Purchased Professional and Technical Services</b>	<b>\$65,740.26</b>	<b>\$65,740.28</b>		<b>\$131,480.54</b>
<b>500 Other Purchased Services</b>				
580 Travel	185.02	171.09		356.11
<b>Total Other Purchased Services</b>	<b>\$185.02</b>	<b>\$171.09</b>		<b>\$356.11</b>
<b>600 Supplies</b>				
610 General Supplies	15,453.10	15,373.10	751.52	31,577.72
640 Books and Periodicals			10,242.54	10,242.54
650 Supplies & Fees – Technology Related	3,230.09	3,230.10		6,460.19
<b>Total Supplies</b>	<b>\$18,683.19</b>	<b>\$18,603.20</b>	<b>\$10,994.06</b>	<b>\$48,280.45</b>
<b>800 Other Objects</b>				
890 Miscellaneous Expenditures		33,463.49		33,463.49
<b>Total Other Objects</b>		<b>\$33,463.49</b>		<b>\$33,463.49</b>
<b>Total 2100 Support Services – Students</b>	<b>\$1,391,908.25</b>	<b>\$1,779,647.72</b>	<b>\$117,262.52</b>	<b>\$3,759,132.92</b>



**General Fund (10)**

	<u>Elementary</u>	<u>Secondary</u>	<u>Federal</u>	<u>Total</u>
<b>2110 Supervision of Student Services</b>				
<b>100 Personnel Services – Salaries</b>				
100 Personnel Services – Salaries	78,987.52	78,987.53		157,975.05
<b>Total Personnel Services – Salaries</b>	<b>\$78,987.52</b>	<b>\$78,987.53</b>		<b>\$157,975.05</b>
<b>200 Personnel Services – Employee Benefits</b>				
210 Group Insurance – Contracted Provider	304.55	304.56		609.11
220 Social Security Contributions	5,791.26	5,791.27		11,582.53
230 PSERS Retirement Contributions	26,951.83	26,951.83		53,903.66
250 Unemployment Compensation	34.22	34.22		68.44
260 Workers' Compensation	330.39	330.39		660.78
270 Group Insurance – Self-Insurance	22,047.43	22,047.43		44,094.86
292 Health Savings Accounts	6,098.08	6,098.07		12,196.15
<b>Total Personnel Services – Employee Benefits</b>	<b>\$61,557.76</b>	<b>\$61,557.77</b>		<b>\$123,115.53</b>
<b>300 Purchased Professional and Technical Services</b>				
390 Other Purchased Professional and Technical Services	18,135.18	18,135.19		36,270.37
<b>Total Purchased Professional and Technical Services</b>	<b>\$18,135.18</b>	<b>\$18,135.19</b>		<b>\$36,270.37</b>
<b>500 Other Purchased Services</b>				
580 Travel	89.82	89.83		179.65
<b>Total Other Purchased Services</b>	<b>\$89.82</b>	<b>\$89.83</b>		<b>\$179.65</b>
<b>600 Supplies</b>				
610 General Supplies	759.96	759.97		1,519.93
650 Supplies & Fees – Technology Related	254.97	254.97		509.94
<b>Total Supplies</b>	<b>\$1,014.93</b>	<b>\$1,014.94</b>		<b>\$2,029.87</b>
<b>Total 2110 Supervision of Student Services</b>	<b>\$159,785.21</b>	<b>\$159,785.26</b>		<b>\$319,570.47</b>

**General Fund (10)**

	<u>Elementary</u>	<u>Secondary</u>	<u>Federal</u>	<u>Total</u>
<b>2111 Supervision of Student Services – Head of Component</b>				
<b>100 Personnel Services – Salaries</b>				
100 Personnel Services – Salaries	78,987.52	78,987.53		157,975.05
<b>Total Personnel Services – Salaries</b>	<b>\$78,987.52</b>	<b>\$78,987.53</b>		<b>\$157,975.05</b>
<b>200 Personnel Services – Employee Benefits</b>				
210 Group Insurance – Contracted Provider	304.55	304.56		609.11
220 Social Security Contributions	5,791.26	5,791.27		11,582.53
230 PSERS Retirement Contributions	26,951.83	26,951.83		53,903.66
250 Unemployment Compensation	34.22	34.22		68.44
260 Workers' Compensation	330.39	330.39		660.78
270 Group Insurance – Self-Insurance	22,047.43	22,047.43		44,094.86
292 Health Savings Accounts	6,098.08	6,098.07		12,196.15
<b>Total Personnel Services – Employee Benefits</b>	<b>\$61,557.76</b>	<b>\$61,557.77</b>		<b>\$123,115.53</b>
<b>300 Purchased Professional and Technical Services</b>				
390 Other Purchased Professional and Technical Services	18,135.18	18,135.19		36,270.37
<b>Total Purchased Professional and Technical Services</b>	<b>\$18,135.18</b>	<b>\$18,135.19</b>		<b>\$36,270.37</b>
<b>500 Other Purchased Services</b>				
580 Travel	89.82	89.83		179.65
<b>Total Other Purchased Services</b>	<b>\$89.82</b>	<b>\$89.83</b>		<b>\$179.65</b>
<b>600 Supplies</b>				
610 General Supplies	759.96	759.97		1,519.93
650 Supplies & Fees – Technology Related	254.97	254.97		509.94
<b>Total Supplies</b>	<b>\$1,014.93</b>	<b>\$1,014.94</b>		<b>\$2,029.87</b>
<b>Total 2111 Supervision of Student Services – Head of Component</b>	<b>\$159,785.21</b>	<b>\$159,785.26</b>		<b>\$319,570.47</b>

**General Fund (10)**

	<u>Elementary</u>	<u>Secondary</u>	<u>Federal</u>	<u>Total</u>
<b>2120 Guidance Services</b>				
<b>100 Personnel Services – Salaries</b>				
100 Personnel Services – Salaries	521,886.53	805,274.45	70,225.00	1,397,385.98
<b>Total Personnel Services – Salaries</b>	<b>\$521,886.53</b>	<b>\$805,274.45</b>	<b>\$70,225.00</b>	<b>\$1,397,385.98</b>
<b>200 Personnel Services – Employee Benefits</b>				
210 Group Insurance – Contracted Provider	1,466.18	1,784.00	167.78	3,417.96
220 Social Security Contributions	38,331.68	59,557.73	5,349.26	103,238.67
230 PSERS Retirement Contributions	182,347.21	277,517.53	24,536.68	484,401.42
250 Unemployment Compensation	179.57	183.69	80.01	443.27
260 Workers' Compensation	2,222.67	3,415.70	293.67	5,932.04
270 Group Insurance – Self-Insurance	109,132.71	126,479.95	5,616.06	241,228.72
292 Health Savings Accounts		3,355.20		3,355.20
<b>Total Personnel Services – Employee Benefits</b>	<b>\$333,680.02</b>	<b>\$472,293.80</b>	<b>\$36,043.46</b>	<b>\$842,017.28</b>
<b>500 Other Purchased Services</b>				
580 Travel	13.92			13.92
<b>Total Other Purchased Services</b>	<b>\$13.92</b>			<b>\$13.92</b>
<b>600 Supplies</b>				
610 General Supplies	2,967.50	2,887.50		5,855.00
<b>Total Supplies</b>	<b>\$2,967.50</b>	<b>\$2,887.50</b>		<b>\$5,855.00</b>
<b>800 Other Objects</b>				
890 Miscellaneous Expenditures		33,463.49		33,463.49
<b>Total Other Objects</b>		<b>\$33,463.49</b>		<b>\$33,463.49</b>
<b>Total 2120 Guidance Services</b>	<b>\$858,547.97</b>	<b>\$1,313,919.24</b>	<b>\$106,268.46</b>	<b>\$2,278,735.67</b>

General Fund (10)

2130 Attendance Services

Elementary

Secondary

Federal

Total

100 Personnel Services – Salaries

100 Personnel Services – Salaries

287,505.79

**Total Personnel Services – Salaries**

**\$287,505.79**

200 Personnel Services – Employee Benefits

210 Group Insurance – Contracted Provider

882.31

220 Social Security Contributions

21,441.65

230 PSERS Retirement Contributions

96,635.92

250 Unemployment Compensation

118.48

260 Workers' Compensation

1,197.47

270 Group Insurance – Self-Insurance

57,132.81

292 Health Savings Accounts

5,400.00

**Total Personnel Services – Employee Benefits**

**\$182,808.64**

**Total 2130 Attendance Services**

**\$470,314.43**

**General Fund (10)**

**2140 Psychological Services**

	<u>Elementary</u>	<u>Secondary</u>	<u>Federal</u>	<u>Total</u>
<b>100 Personnel Services – Salaries</b>				
100 Personnel Services – Salaries	203,811.96	144,939.51		348,751.47
<b>Total Personnel Services – Salaries</b>	<b>\$203,811.96</b>	<b>\$144,939.51</b>		<b>\$348,751.47</b>
<b>200 Personnel Services – Employee Benefits</b>				
210 Group Insurance – Contracted Provider	531.19	400.03		931.22
220 Social Security Contributions	15,414.86	10,796.58		26,211.44
230 PSERS Retirement Contributions	71,212.05	50,641.81		121,853.86
250 Unemployment Compensation	54.65	36.46		91.11
260 Workers' Compensation	861.67	604.97		1,466.64
270 Group Insurance – Self-Insurance	19,301.57	36,136.75		55,438.32
<b>Total Personnel Services – Employee Benefits</b>	<b>\$107,375.99</b>	<b>\$98,616.60</b>		<b>\$205,992.59</b>
<b>300 Purchased Professional and Technical Services</b>				
330 Other Professional Services	47,605.08	47,605.09		95,210.17
<b>Total Purchased Professional and Technical Services</b>	<b>\$47,605.08</b>	<b>\$47,605.09</b>		<b>\$95,210.17</b>
<b>500 Other Purchased Services</b>				
580 Travel	81.28	81.26		162.54
<b>Total Other Purchased Services</b>	<b>\$81.28</b>	<b>\$81.26</b>		<b>\$162.54</b>
<b>600 Supplies</b>				
610 General Supplies	11,725.64	11,725.63	751.52	24,202.79
640 Books and Periodicals			10,242.54	10,242.54
650 Supplies & Fees – Technology Related	2,975.12	2,975.13		5,950.25
<b>Total Supplies</b>	<b>\$14,700.76</b>	<b>\$14,700.76</b>	<b>\$10,994.06</b>	<b>\$40,395.58</b>
<b>Total 2140 Psychological Services</b>	<b>\$373,575.07</b>	<b>\$305,943.22</b>	<b>\$10,994.06</b>	<b>\$690,512.35</b>

**General Fund (10)**

**2200 Support Services – Instructional Staff**

	<u>Elementary</u>	<u>Secondary</u>	<u>Federal</u>	<u>Total</u>
<b>100 Personnel Services – Salaries</b>				
100 Personnel Services – Salaries	495,948.53	643,266.47	377,260.92	1,516,475.92
<b>Total Personnel Services – Salaries</b>	<b>\$495,948.53</b>	<b>\$643,266.47</b>	<b>\$377,260.92</b>	<b>\$1,516,475.92</b>
<b>200 Personnel Services – Employee Benefits</b>				
210 Group Insurance – Contracted Provider	1,651.51	2,171.89	1,331.11	5,154.51
220 Social Security Contributions	37,236.04	47,782.62	28,391.06	113,409.72
230 PSERS Retirement Contributions	168,079.53	216,471.63	126,325.97	510,877.13
240 Tuition Reimbursement	109,997.58	114,507.55		224,505.13
250 Unemployment Compensation	139.51	187.38	320.00	646.89
260 Workers' Compensation	2,109.32	2,734.25	1,531.04	6,374.61
270 Group Insurance – Self-Insurance	65,961.91	128,520.30	76,523.14	271,005.35
292 Health Savings Accounts	6,150.00	10,950.00	9,000.00	26,100.00
<b>Total Personnel Services – Employee Benefits</b>	<b>\$391,325.40</b>	<b>\$523,325.62</b>	<b>\$243,422.32</b>	<b>\$1,158,073.34</b>
<b>300 Purchased Professional and Technical Services</b>				
322 Professional Educational Services – lus			245,887.44	245,887.44
360 Employee Training and Development Services	3,178.75	3,178.75	15,048.50	21,406.00
<b>Total Purchased Professional and Technical Services</b>	<b>\$3,178.75</b>	<b>\$3,178.75</b>	<b>\$260,935.94</b>	<b>\$267,293.44</b>
<b>400 Purchased Property Services</b>				
430 Repairs and Maintenance Services	273.72	273.73		547.45
<b>Total Purchased Property Services</b>	<b>\$273.72</b>	<b>\$273.73</b>		<b>\$547.45</b>
<b>600 Supplies</b>				
610 General Supplies	16,298.01	261.61		16,559.62
630 Food	148.14	148.14		296.28
640 Books and Periodicals	3,718.16	6,120.54		9,838.70
650 Supplies & Fees – Technology Related	28,277.04	27,947.03	1,979.73	58,203.80
<b>Total Supplies</b>	<b>\$48,441.35</b>	<b>\$34,477.32</b>	<b>\$1,979.73</b>	<b>\$84,898.40</b>
<b>700 Property</b>				
752 Capital Equipment – Original and Additional	2,295.86			2,295.86
762 Capitalized Equipment - Replacement	6,390.00	6,390.00		12,780.00
<b>Total Property</b>	<b>\$8,685.86</b>	<b>\$6,390.00</b>		<b>\$15,075.86</b>
<b>800 Other Objects</b>				
810 Dues and Fees	595.00	595.00		1,190.00
890 Miscellaneous Expenditures	80.00	80.00		160.00
<b>Total Other Objects</b>	<b>\$675.00</b>	<b>\$675.00</b>		<b>\$1,350.00</b>
<b>Total 2200 Support Services – Instructional Staff</b>	<b>\$948,528.61</b>	<b>\$1,211,586.89</b>	<b>\$883,598.91</b>	<b>\$3,043,714.41</b>

LEA : 124151902 Coatesville Area SD

Printed 12/20/2022 12:08:03 PM

**General Fund (10)**

	<u>Elementary</u>	<u>Secondary</u>	<u>Federal</u>	<u>Total</u>
<b>2240 Computer-Assisted Instruction Support Services</b>				
<b>100 Personnel Services – Salaries</b>				
100 Personnel Services – Salaries	120,984.20	120,984.20		241,968.40
<b>Total Personnel Services – Salaries</b>	<b>\$120,984.20</b>	<b>\$120,984.20</b>		<b>\$241,968.40</b>
<b>200 Personnel Services – Employee Benefits</b>				
210 Group Insurance – Contracted Provider	486.82	486.82		973.64
220 Social Security Contributions	9,252.80	9,252.79		18,505.59
230 PSERS Retirement Contributions	41,382.10	41,382.10		82,764.20
250 Unemployment Compensation	45.53	45.53		91.06
260 Workers' Compensation	522.84	522.85		1,045.69
270 Group Insurance – Self-Insurance	37,984.28	37,984.29		75,968.57
292 Health Savings Accounts	3,150.00	3,150.00		6,300.00
<b>Total Personnel Services – Employee Benefits</b>	<b>\$92,824.37</b>	<b>\$92,824.38</b>		<b>\$185,648.75</b>
<b>600 Supplies</b>				
650 Supplies & Fees – Technology Related			1,979.73	1,979.73
<b>Total Supplies</b>			<b>\$1,979.73</b>	<b>\$1,979.73</b>
<b>Total 2240 Computer-Assisted Instruction Support Services</b>	<b>\$213,808.57</b>	<b>\$213,808.58</b>	<b>\$1,979.73</b>	<b>\$429,596.88</b>

LEA : 124151902 Coatesville Area SD

Printed 12/20/2022 12:08:03 PM

**General Fund (10)**

**2250 School Library Services**

	<u>Elementary</u>	<u>Secondary</u>	<u>Federal</u>	<u>Total</u>
<b>100 Personnel Services – Salaries</b>				
100 Personnel Services – Salaries	13,235.04	74,120.01		87,355.05
<b>Total Personnel Services – Salaries</b>	<b>\$13,235.04</b>	<b>\$74,120.01</b>		<b>\$87,355.05</b>
<b>200 Personnel Services – Employee Benefits</b>				
210 Group Insurance – Contracted Provider		257.25		257.25
220 Social Security Contributions	1,012.47	5,340.72		6,353.19
230 PSERS Retirement Contributions	4,624.32	25,897.44		30,521.76
250 Unemployment Compensation	18.30	54.72		73.02
260 Workers' Compensation	62.20	319.81		382.01
270 Group Insurance – Self-Insurance		36,852.92		36,852.92
292 Health Savings Accounts		1,800.00		1,800.00
<b>Total Personnel Services – Employee Benefits</b>	<b>\$5,717.29</b>	<b>\$70,522.86</b>		<b>\$76,240.15</b>
<b>600 Supplies</b>				
610 General Supplies	1,926.07	261.61		2,187.68
640 Books and Periodicals		2,402.38		2,402.38
650 Supplies & Fees – Technology Related	1,067.50	737.50		1,805.00
<b>Total Supplies</b>	<b>\$2,993.57</b>	<b>\$3,401.49</b>		<b>\$6,395.06</b>
<b>700 Property</b>				
752 Capital Equipment – Original and Additional	2,295.86			2,295.86
<b>Total Property</b>	<b>\$2,295.86</b>			<b>\$2,295.86</b>
<b>Total 2250 School Library Services</b>	<b>\$24,241.76</b>	<b>\$148,044.36</b>		<b>\$172,286.12</b>



**General Fund (10)**

**2260 Instruction and Curriculum Development Services**

	<u>Elementary</u>	<u>Secondary</u>	<u>Federal</u>	<u>Total</u>
<b>100 Personnel Services – Salaries</b>				
100 Personnel Services – Salaries	361,729.29	448,162.26	377,112.42	1,187,003.97
<b>Total Personnel Services – Salaries</b>	<b>\$361,729.29</b>	<b>\$448,162.26</b>	<b>\$377,112.42</b>	<b>\$1,187,003.97</b>
<b>200 Personnel Services – Employee Benefits</b>				
210 Group Insurance – Contracted Provider	1,164.69	1,427.82	1,331.11	3,923.62
220 Social Security Contributions	26,970.77	33,189.11	28,379.89	88,539.77
230 PSERS Retirement Contributions	122,073.11	149,192.09	126,274.08	397,539.28
250 Unemployment Compensation	75.68	87.13	320.00	482.81
260 Workers' Compensation	1,524.28	1,891.59	1,529.70	4,945.57
270 Group Insurance – Self-Insurance	27,977.63	53,683.09	76,523.14	158,183.86
292 Health Savings Accounts	3,000.00	6,000.00	9,000.00	18,000.00
<b>Total Personnel Services – Employee Benefits</b>	<b>\$182,786.16</b>	<b>\$245,470.83</b>	<b>\$243,357.92</b>	<b>\$671,614.91</b>
<b>400 Purchased Property Services</b>				
430 Repairs and Maintenance Services	273.72	273.73		547.45
<b>Total Purchased Property Services</b>	<b>\$273.72</b>	<b>\$273.73</b>		<b>\$547.45</b>
<b>600 Supplies</b>				
610 General Supplies	14,371.94			14,371.94
630 Food	148.14	148.14		296.28
640 Books and Periodicals	3,718.16	3,718.16		7,436.32
650 Supplies & Fees – Technology Related	27,209.54	27,209.53		54,419.07
<b>Total Supplies</b>	<b>\$45,447.78</b>	<b>\$31,075.83</b>		<b>\$76,523.61</b>
<b>700 Property</b>				
762 Capitalized Equipment - Replacement	6,390.00	6,390.00		12,780.00
<b>Total Property</b>	<b>\$6,390.00</b>	<b>\$6,390.00</b>		<b>\$12,780.00</b>
<b>800 Other Objects</b>				
810 Dues and Fees	595.00	595.00		1,190.00
890 Miscellaneous Expenditures	80.00	80.00		160.00
<b>Total Other Objects</b>	<b>\$675.00</b>	<b>\$675.00</b>		<b>\$1,350.00</b>
<b>Total 2260 Instruction and Curriculum Development Services</b>	<b>\$597,301.95</b>	<b>\$732,047.65</b>	<b>\$620,470.34</b>	<b>\$1,949,819.94</b>

**General Fund (10)**

2270 Instructional Staff Professional Development Services	<u>Elementary</u>	<u>Secondary</u>	<u>Federal</u>	<u>Total</u>
<b>100 Personnel Services – Salaries</b>				
100 Personnel Services – Salaries			148.50	148.50
<b>Total Personnel Services – Salaries</b>			<b>\$148.50</b>	<b>\$148.50</b>
<b>200 Personnel Services – Employee Benefits</b>				
220 Social Security Contributions			11.17	11.17
230 PSERS Retirement Contributions			51.89	51.89
240 Tuition Reimbursement	109,997.58	114,507.55		224,505.13
260 Workers' Compensation			1.34	1.34
<b>Total Personnel Services – Employee Benefits</b>	<b>\$109,997.58</b>	<b>\$114,507.55</b>	<b>\$64.40</b>	<b>\$224,569.53</b>
<b>300 Purchased Professional and Technical Services</b>				
322 Professional Educational Services – Ius			245,887.44	245,887.44
360 Employee Training and Development Services	3,178.75	3,178.75	15,048.50	21,406.00
<b>Total Purchased Professional and Technical Services</b>	<b>\$3,178.75</b>	<b>\$3,178.75</b>	<b>\$260,935.94</b>	<b>\$267,293.44</b>
<b>Total 2270 Instructional Staff Professional Development Services</b>	<b>\$113,176.33</b>	<b>\$117,686.30</b>	<b>\$261,148.84</b>	<b>\$492,011.47</b>

**General Fund (10)**

	<u>Elementary</u>	<u>Secondary</u>	<u>Federal</u>	<u>Total</u>
<b>2300 Support Services – Administration</b>				
<b>100 Personnel Services – Salaries</b>				
100 Personnel Services – Salaries	1,362,683.39	1,552,722.73	909.08	3,236,539.73
<b>Total Personnel Services – Salaries</b>	<b>\$1,362,683.39</b>	<b>\$1,552,722.73</b>	<b>\$909.08</b>	<b>\$3,236,539.73</b>
<b>200 Personnel Services – Employee Benefits</b>				
210 Group Insurance – Contracted Provider	4,396.62	5,322.09		10,878.81
220 Social Security Contributions	101,688.35	115,545.40	69.54	235,260.20
230 PSERS Retirement Contributions	450,739.42	515,296.63	317.63	1,076,256.76
250 Unemployment Compensation	335.44	303.00		715.26
260 Workers' Compensation	5,685.65	6,504.77	8.22	13,532.87
270 Group Insurance – Self-Insurance	215,056.30	200,784.81		456,135.75
292 Health Savings Accounts	21,978.00	24,150.00		50,928.00
<b>Total Personnel Services – Employee Benefits</b>	<b>\$799,879.78</b>	<b>\$867,906.70</b>	<b>\$395.39</b>	<b>\$1,843,707.65</b>
<b>300 Purchased Professional and Technical Services</b>				
330 Other Professional Services				1,019,429.46
350 Security / Safety Services				3,255.84
390 Other Purchased Professional and Technical Services	24,112.25	23,184.46		177,942.83
<b>Total Purchased Professional and Technical Services</b>	<b>\$24,112.25</b>	<b>\$23,184.46</b>		<b>\$1,200,628.13</b>
<b>400 Purchased Property Services</b>				
440 Rentals	61,271.47	61,628.95		134,503.92
<b>Total Purchased Property Services</b>	<b>\$61,271.47</b>	<b>\$61,628.95</b>		<b>\$134,503.92</b>
<b>500 Other Purchased Services</b>				
520 Insurance – General				341.00
530 Communications				6,362.49
549 Other Advertising/Public Relations		900.00		49,137.84
550 Printing and Binding				17,255.50
<b>Total Other Purchased Services</b>		<b>\$900.00</b>		<b>\$73,096.83</b>
<b>600 Supplies</b>				
610 General Supplies	2,690.83	270.10		21,800.50
630 Food	976.91	1,280.51		7,434.24
650 Supplies & Fees – Technology Related	65.44	1,853.43		22,064.59
<b>Total Supplies</b>	<b>\$3,733.18</b>	<b>\$3,404.04</b>		<b>\$51,299.33</b>
<b>800 Other Objects</b>				
810 Dues and Fees	2,571.50	2,458.50		231,876.48
820 Claims and Judgments Against the LEA				273,151.29
<b>Total Other Objects</b>	<b>\$2,571.50</b>	<b>\$2,458.50</b>		<b>\$505,027.77</b>
<b>Total 2300 Support Services – Administration</b>	<b>\$2,254,251.57</b>	<b>\$2,512,205.38</b>	<b>\$1,304.47</b>	<b>\$7,044,803.36</b>

**General Fund (10)**

**2310 Board Services**

Elementary                      Secondary                      Federal                      Total

**300 Purchased Professional and Technical Services**

330 Other Professional Services 17,500.00

**Total Purchased Professional and Technical Services \$17,500.00**

**500 Other Purchased Services**

520 Insurance – General 341.00

549 Other Advertising/Public Relations 48,237.84

550 Printing and Binding 386.71

**Total Other Purchased Services \$48,965.55**

**600 Supplies**

610 General Supplies 3,253.27

630 Food 882.05

650 Supplies & Fees – Technology Related 18,378.34

**Total Supplies \$22,513.66**

**800 Other Objects**

810 Dues and Fees 16,789.57

820 Claims and Judgments Against the LEA 273,151.29

**Total Other Objects \$289,940.86**

**Total 2310 Board Services \$378,920.07**

**General Fund (10)**

<b>2330 Tax Assessment and Collection Services</b>	<u>Elementary</u>	<u>Secondary</u>	<u>Federal</u>	<u>Total</u>
<b>100 Personnel Services – Salaries</b>				
100 Personnel Services – Salaries				1,458.50
<b>Total Personnel Services – Salaries</b>				<b>\$1,458.50</b>
<b>200 Personnel Services – Employee Benefits</b>				
220 Social Security Contributions				111.58
250 Unemployment Compensation				3.95
260 Workers' Compensation				10.74
<b>Total Personnel Services – Employee Benefits</b>				<b>\$126.27</b>
<b>300 Purchased Professional and Technical Services</b>				
330 Other Professional Services				52,108.19
<b>Total Purchased Professional and Technical Services</b>				<b>\$52,108.19</b>
<b>500 Other Purchased Services</b>				
530 Communications				6,362.49
<b>Total Other Purchased Services</b>				<b>\$6,362.49</b>
<b>800 Other Objects</b>				
810 Dues and Fees				207,212.01
<b>Total Other Objects</b>				<b>\$207,212.01</b>
<b>Total 2330 Tax Assessment and Collection Services</b>				<b>\$267,267.46</b>

General Fund (10)

2350 Legal and Accounting Services

Elementary

Secondary

Federal

Total

300 Purchased Professional and Technical Services

330 Other Professional Services

940,858.77

**Total Purchased Professional and Technical Services**

**\$940,858.77**

**Total 2350 Legal and Accounting Services**

**\$940,858.77**

General Fund (10)

2360 Office of the Superintendent / Executive Director Services

Elementary

Secondary

Federal

Total

100 Personnel Services – Salaries

100 Personnel Services – Salaries

318,766.03

**Total Personnel Services – Salaries**

**\$318,766.03**

200 Personnel Services – Employee Benefits

210 Group Insurance – Contracted Provider

1,160.10

220 Social Security Contributions

17,845.33

230 PSERS Retirement Contributions

109,903.08

250 Unemployment Compensation

72.87

260 Workers' Compensation

1,323.49

270 Group Insurance – Self-Insurance

40,294.64

292 Health Savings Accounts

4,800.00

**Total Personnel Services – Employee Benefits**

**\$175,399.51**

300 Purchased Professional and Technical Services

390 Other Purchased Professional and Technical Services

130,646.12

**Total Purchased Professional and Technical Services**

**\$130,646.12**

600 Supplies

610 General Supplies

1,331.20

630 Food

360.07

650 Supplies & Fees – Technology Related

1,767.38

**Total Supplies**

**\$3,458.65**

800 Other Objects

810 Dues and Fees

145.00

**Total Other Objects**

**\$145.00**

**Total 2360 Office of the Superintendent / Executive Director Services**

**\$628,415.31**

**General Fund (10)**

**2380 Office of the Principal Services**

	<u>Elementary</u>	<u>Secondary</u>	<u>Federal</u>	<u>Total</u>
<b>100 Personnel Services – Salaries</b>				
100 Personnel Services – Salaries	1,362,683.39	1,552,722.73	909.08	2,916,315.20
<b>Total Personnel Services – Salaries</b>	<b>\$1,362,683.39</b>	<b>\$1,552,722.73</b>	<b>\$909.08</b>	<b>\$2,916,315.20</b>
<b>200 Personnel Services – Employee Benefits</b>				
210 Group Insurance – Contracted Provider	4,396.62	5,322.09		9,718.71
220 Social Security Contributions	101,688.35	115,545.40	69.54	217,303.29
230 PSERS Retirement Contributions	450,739.42	515,296.63	317.63	966,353.68
250 Unemployment Compensation	335.44	303.00		638.44
260 Workers' Compensation	5,685.65	6,504.77	8.22	12,198.64
270 Group Insurance – Self-Insurance	215,056.30	200,784.81		415,841.11
292 Health Savings Accounts	21,978.00	24,150.00		46,128.00
<b>Total Personnel Services – Employee Benefits</b>	<b>\$799,879.78</b>	<b>\$867,906.70</b>	<b>\$395.39</b>	<b>\$1,668,181.87</b>
<b>300 Purchased Professional and Technical Services</b>				
390 Other Purchased Professional and Technical Services	24,112.25	23,184.46		47,296.71
<b>Total Purchased Professional and Technical Services</b>	<b>\$24,112.25</b>	<b>\$23,184.46</b>		<b>\$47,296.71</b>
<b>400 Purchased Property Services</b>				
440 Rentals	61,271.47	61,628.95		122,900.42
<b>Total Purchased Property Services</b>	<b>\$61,271.47</b>	<b>\$61,628.95</b>		<b>\$122,900.42</b>
<b>500 Other Purchased Services</b>				
549 Other Advertising/Public Relations		900.00		900.00
<b>Total Other Purchased Services</b>		<b>\$900.00</b>		<b>\$900.00</b>
<b>600 Supplies</b>				
610 General Supplies	2,690.83	270.10		2,960.93
630 Food	976.91	1,280.51		2,257.42
650 Supplies & Fees – Technology Related	65.44	1,853.43		1,918.87
<b>Total Supplies</b>	<b>\$3,733.18</b>	<b>\$3,404.04</b>		<b>\$7,137.22</b>
<b>800 Other Objects</b>				
810 Dues and Fees	2,571.50	2,458.50		5,030.00
<b>Total Other Objects</b>	<b>\$2,571.50</b>	<b>\$2,458.50</b>		<b>\$5,030.00</b>
<b>Total 2380 Office of the Principal Services</b>	<b>\$2,254,251.57</b>	<b>\$2,512,205.38</b>	<b>\$1,304.47</b>	<b>\$4,767,761.42</b>



General Fund (10)

	<u>Elementary</u>	<u>Secondary</u>	<u>Federal</u>	<u>Total</u>
<b>2390 Other Administration Services</b>				
<b>300 <u>Purchased Professional and Technical Services</u></b>				
330 Other Professional Services				8,962.50
350 Security / Safety Services				3,255.84
<b>Total Purchased Professional and Technical Services</b>				<b>\$12,218.34</b>
<b>400 <u>Purchased Property Services</u></b>				
440 Rentals				11,603.50
<b>Total Purchased Property Services</b>				<b>\$11,603.50</b>
<b>500 <u>Other Purchased Services</u></b>				
550 Printing and Binding				16,868.79
<b>Total Other Purchased Services</b>				<b>\$16,868.79</b>
<b>600 <u>Supplies</u></b>				
610 General Supplies				14,255.10
630 Food				3,934.70
<b>Total Supplies</b>				<b>\$18,189.80</b>
<b>800 <u>Other Objects</u></b>				
810 Dues and Fees				2,699.90
<b>Total Other Objects</b>				<b>\$2,699.90</b>
<b>Total 2390 Other Administration Services</b>				<b>\$61,580.33</b>

**General Fund (10)**

	<u>Elementary</u>	<u>Secondary</u>	<u>Federal</u>	<u>Total</u>
<b>2400 Support Services – Pupil Health</b>				
<b>100 Personnel Services – Salaries</b>				
100 Personnel Services – Salaries				532,696.50
<b>Total Personnel Services – Salaries</b>				<b>\$532,696.50</b>
<b>200 Personnel Services – Employee Benefits</b>				
210 Group Insurance – Contracted Provider				1,299.50
220 Social Security Contributions				38,919.65
230 PSERS Retirement Contributions				184,417.58
250 Unemployment Compensation				141.81
260 Workers' Compensation				2,264.66
270 Group Insurance – Self-Insurance				79,014.19
292 Health Savings Accounts				1,800.00
<b>Total Personnel Services – Employee Benefits</b>				<b>\$307,857.39</b>
<b>300 Purchased Professional and Technical Services</b>				
330 Other Professional Services			74,125.48	170,491.95
<b>Total Purchased Professional and Technical Services</b>			<b>\$74,125.48</b>	<b>\$170,491.95</b>
<b>400 Purchased Property Services</b>				
430 Repairs and Maintenance Services				991.62
<b>Total Purchased Property Services</b>				<b>\$991.62</b>
<b>600 Supplies</b>				
610 General Supplies				8,776.70
<b>Total Supplies</b>				<b>\$8,776.70</b>
<b>Total 2400 Support Services – Pupil Health</b>			<b>\$74,125.48</b>	<b>\$1,020,814.16</b>

**General Fund (10)**

**2420 Medical Services**

	<u>Elementary</u>	<u>Secondary</u>	<u>Federal</u>	<u>Total</u>
<b>100 Personnel Services – Salaries</b>				
100 Personnel Services – Salaries				532,696.50
<b>Total Personnel Services – Salaries</b>				<b>\$532,696.50</b>
<b>200 Personnel Services – Employee Benefits</b>				
210 Group Insurance – Contracted Provider				1,299.50
220 Social Security Contributions				38,919.65
230 PSERS Retirement Contributions				184,417.58
250 Unemployment Compensation				141.81
260 Workers' Compensation				2,264.66
270 Group Insurance – Self-Insurance				79,014.19
292 Health Savings Accounts				1,800.00
<b>Total Personnel Services – Employee Benefits</b>				<b>\$307,857.39</b>
<b>300 Purchased Professional and Technical Services</b>				
330 Other Professional Services				96,366.47
<b>Total Purchased Professional and Technical Services</b>				<b>\$96,366.47</b>
<b>400 Purchased Property Services</b>				
430 Repairs and Maintenance Services				304.00
<b>Total Purchased Property Services</b>				<b>\$304.00</b>
<b>600 Supplies</b>				
610 General Supplies				7,570.26
<b>Total Supplies</b>				<b>\$7,570.26</b>
<b>Total 2420 Medical Services</b>				<b>\$944,794.62</b>

LEA : 124151902 Coatesville Area SD

Printed 12/20/2022 12:08:03 PM

General Fund (10)

2440 Nursing Services

300 Purchased Professional and Technical Services

330 Other Professional Services

**Total Purchased Professional and Technical Services**

**Total 2440 Nursing Services**

Elementary

Secondary

Federal

Total

74,125.48

74,125.48

**\$74,125.48**

**\$74,125.48**

**\$74,125.48**

**\$74,125.48**

General Fund (10)

2490 Other Health Services

Elementary

Secondary

Federal

Total

400 Purchased Property Services

430 Repairs and Maintenance Services

687.62

**Total Purchased Property Services**

**\$687.62**

600 Supplies

610 General Supplies

1,206.44

**Total Supplies**

**\$1,206.44**

**Total 2490 Other Health Services**

**\$1,894.06**

**General Fund (10)**

	<u>Elementary</u>	<u>Secondary</u>	<u>Federal</u>	<u>Total</u>
<b>2500 Support Services – Business</b>				
<b>100 Personnel Services – Salaries</b>				
100 Personnel Services – Salaries				603,339.68
<b>Total Personnel Services – Salaries</b>				<b>\$603,339.68</b>
<b>200 Personnel Services – Employee Benefits</b>				
210 Group Insurance – Contracted Provider				2,205.44
220 Social Security Contributions				44,998.14
230 PSERS Retirement Contributions				202,594.06
250 Unemployment Compensation				181.97
260 Workers' Compensation				2,502.36
270 Group Insurance – Self-Insurance				91,968.68
292 Health Savings Accounts				15,000.00
<b>Total Personnel Services – Employee Benefits</b>				<b>\$359,450.65</b>
<b>300 Purchased Professional and Technical Services</b>				
310 Official / Administrative Services				73,688.75
330 Other Professional Services				39,900.00
<b>Total Purchased Professional and Technical Services</b>				<b>\$113,588.75</b>
<b>500 Other Purchased Services</b>				
530 Communications				26,132.17
580 Travel				67.51
<b>Total Other Purchased Services</b>				<b>\$26,199.68</b>
<b>600 Supplies</b>				
610 General Supplies				7,650.42
650 Supplies & Fees – Technology Related				27,409.74
<b>Total Supplies</b>				<b>\$35,060.16</b>
<b>800 Other Objects</b>				
810 Dues and Fees				124,575.62
830 Interest				57,866.67
<b>Total Other Objects</b>				<b>\$182,442.29</b>
<b>Total 2500 Support Services – Business</b>				<b>\$1,320,081.21</b>

General Fund (10)

2510 Fiscal Services

Elementary

Secondary

Federal

Total

100 Personnel Services – Salaries

100 Personnel Services – Salaries 545,322.46

**Total Personnel Services – Salaries \$545,322.46**

200 Personnel Services – Employee Benefits

210 Group Insurance – Contracted Provider 1,982.67

220 Social Security Contributions 40,603.53

230 PSERS Retirement Contributions 183,114.89

250 Unemployment Compensation 163.78

260 Workers' Compensation 2,260.00

270 Group Insurance – Self-Insurance 72,240.54

292 Health Savings Accounts 12,000.00

**Total Personnel Services – Employee Benefits \$312,365.41**

300 Purchased Professional and Technical Services

310 Official / Administrative Services 73,688.75

330 Other Professional Services 39,900.00

**Total Purchased Professional and Technical Services \$113,588.75**

500 Other Purchased Services

530 Communications 26,132.17

580 Travel 67.51

**Total Other Purchased Services \$26,199.68**

600 Supplies

610 General Supplies 7,650.42

650 Supplies & Fees – Technology Related 27,409.74

**Total Supplies \$35,060.16**

800 Other Objects

810 Dues and Fees 124,575.62

830 Interest 57,866.67

**Total Other Objects \$182,442.29**

**Total 2510 Fiscal Services \$1,214,978.75**

**General Fund (10)**

	<u>Elementary</u>	<u>Secondary</u>	<u>Federal</u>	<u>Total</u>
<b>2511 Supervision of Fiscal Services - Head of Component</b>				
<b>100 Personnel Services – Salaries</b>				
100 Personnel Services – Salaries				212,352.15
<b>Total Personnel Services – Salaries</b>				<b>\$212,352.15</b>
<b>200 Personnel Services – Employee Benefits</b>				
210 Group Insurance – Contracted Provider				716.56
220 Social Security Contributions				15,583.20
230 PSERS Retirement Contributions				71,323.81
250 Unemployment Compensation				36.41
260 Workers' Compensation				884.41
270 Group Insurance – Self-Insurance				13,134.96
292 Health Savings Accounts				3,000.00
<b>Total Personnel Services – Employee Benefits</b>				<b>\$104,679.35</b>
<b>300 Purchased Professional and Technical Services</b>				
310 Official / Administrative Services				73,688.75
<b>Total Purchased Professional and Technical Services</b>				<b>\$73,688.75</b>
<b>600 Supplies</b>				
610 General Supplies				2,300.69
650 Supplies & Fees – Technology Related				27,409.74
<b>Total Supplies</b>				<b>\$29,710.43</b>
<b>800 Other Objects</b>				
810 Dues and Fees				2,559.40
<b>Total Other Objects</b>				<b>\$2,559.40</b>
<b>Total 2511 Supervision of Fiscal Services - Head of Component</b>				<b>\$422,990.08</b>



**General Fund (10)**

**2513 Receiving and Disbursing Funds Services**

Elementary                      Secondary                      Federal                      Total

<b>100</b>	<b><u>Personnel Services – Salaries</u></b>			
	100 Personnel Services – Salaries			272,321.11
<b>Total Personnel Services – Salaries</b>				<b>\$272,321.11</b>
<b>200</b>	<b><u>Personnel Services – Employee Benefits</u></b>			
	210 Group Insurance – Contracted Provider			1,031.57
	220 Social Security Contributions			20,632.91
	230 PSERS Retirement Contributions			91,015.84
	250 Unemployment Compensation			108.84
	260 Workers' Compensation			1,129.68
	270 Group Insurance – Self-Insurance			44,315.55
	292 Health Savings Accounts			7,200.00
<b>Total Personnel Services – Employee Benefits</b>				<b>\$165,434.39</b>
<b>300</b>	<b><u>Purchased Professional and Technical Services</u></b>			
	330 Other Professional Services			39,900.00
<b>Total Purchased Professional and Technical Services</b>				<b>\$39,900.00</b>
<b>500</b>	<b><u>Other Purchased Services</u></b>			
	530 Communications			26,132.17
<b>Total Other Purchased Services</b>				<b>\$26,132.17</b>
<b>600</b>	<b><u>Supplies</u></b>			
	610 General Supplies			779.00
<b>Total Supplies</b>				<b>\$779.00</b>
<b>800</b>	<b><u>Other Objects</u></b>			
	810 Dues and Fees			8,273.13
<b>Total Other Objects</b>				<b>\$8,273.13</b>
<b>Total 2513 Receiving and Disbursing Funds Services</b>				<b>\$512,839.80</b>

LEA : 124151902 Coatesville Area SD

Printed 12/20/2022 12:08:03 PM

General Fund (10)

2514 Payroll Services

Elementary

Secondary

Federal

Total

100 Personnel Services – Salaries

100 Personnel Services – Salaries

60,649.20

**Total Personnel Services – Salaries**

**\$60,649.20**

200 Personnel Services – Employee Benefits

210 Group Insurance – Contracted Provider

234.54

220 Social Security Contributions

4,387.42

230 PSERS Retirement Contributions

20,775.24

250 Unemployment Compensation

18.53

260 Workers' Compensation

245.91

270 Group Insurance – Self-Insurance

14,790.03

292 Health Savings Accounts

1,800.00

**Total Personnel Services – Employee Benefits**

**\$42,251.67**

**Total 2514 Payroll Services**

**\$102,900.87**

LEA : 124151902 Coatesville Area SD

Printed 12/20/2022 12:08:03 PM

General Fund (10)

2519 Other Fiscal Services

Elementary

Secondary

Federal

Total

500 Other Purchased Services

580 Travel 67.51

**Total Other Purchased Services \$67.51**

600 Supplies

610 General Supplies 4,570.73

**Total Supplies \$4,570.73**

800 Other Objects

810 Dues and Fees 113,743.09

830 Interest 57,866.67

**Total Other Objects \$171,609.76**

**Total 2519 Other Fiscal Services \$176,248.00**

LEA : 124151902 Coatesville Area SD

Printed 12/20/2022 12:08:03 PM

General Fund (10)

2520 Purchasing Services

Elementary

Secondary

Federal

Total

100 Personnel Services – Salaries

100 Personnel Services – Salaries

58,017.22

**Total Personnel Services – Salaries**

**\$58,017.22**

200 Personnel Services – Employee Benefits

210 Group Insurance – Contracted Provider

222.77

220 Social Security Contributions

4,394.61

230 PSERS Retirement Contributions

19,479.17

250 Unemployment Compensation

18.19

260 Workers' Compensation

242.36

270 Group Insurance – Self-Insurance

19,728.14

292 Health Savings Accounts

3,000.00

**Total Personnel Services – Employee Benefits**

**\$47,085.24**

**Total 2520 Purchasing Services**

**\$105,102.46**



**General Fund (10)**

**2610 Supervision of Operation and Maintenance of Plant Services**

	<u>Elementary</u>	<u>Secondary</u>	<u>Federal</u>	<u>Total</u>
<b>100 Personnel Services – Salaries</b>				
100 Personnel Services – Salaries				194,544.77
<b>Total Personnel Services – Salaries</b>				<b>\$194,544.77</b>
<b>200 Personnel Services – Employee Benefits</b>				
210 Group Insurance – Contracted Provider				719.07
220 Social Security Contributions				14,790.94
230 PSERS Retirement Contributions				66,167.42
250 Unemployment Compensation				70.92
260 Workers' Compensation				807.42
270 Group Insurance – Self-Insurance				20,669.95
292 Health Savings Accounts				4,673.08
<b>Total Personnel Services – Employee Benefits</b>				<b>\$107,898.80</b>
<b>600 Supplies</b>				
610 General Supplies	42.68	42.68		85.36
<b>Total Supplies</b>	<b>\$42.68</b>	<b>\$42.68</b>		<b>\$85.36</b>
<b>Total 2610 Supervision of Operation and Maintenance of Plant Services</b>	<b>\$42.68</b>	<b>\$42.68</b>		<b>\$302,528.93</b>

**General Fund (10)**

**2611 Supervision of Operation and Maintenance of Plant Services – Head of Component**

	<u>Elementary</u>	<u>Secondary</u>	<u>Federal</u>	<u>Total</u>
<b>100 Personnel Services – Salaries</b>				
100 Personnel Services – Salaries				194,544.77
<b>Total Personnel Services – Salaries</b>				<b>\$194,544.77</b>
<b>200 Personnel Services – Employee Benefits</b>				
210 Group Insurance – Contracted Provider				719.07
220 Social Security Contributions				14,790.94
230 PSERS Retirement Contributions				66,167.42
250 Unemployment Compensation				70.92
260 Workers' Compensation				807.42
270 Group Insurance – Self-Insurance				20,669.95
292 Health Savings Accounts				4,673.08
<b>Total Personnel Services – Employee Benefits</b>				<b>\$107,898.80</b>
<b>600 Supplies</b>				
610 General Supplies	42.68	42.68		85.36
<b>Total Supplies</b>	<b>\$42.68</b>	<b>\$42.68</b>		<b>\$85.36</b>
<b>Total 2611 Supervision of Operation and Maintenance of Plant Services – Head of Component</b>	<b>\$42.68</b>	<b>\$42.68</b>		<b>\$302,528.93</b>

**General Fund (10)**

**2620 Operation of Buildings Services**

**100 Personnel Services – Salaries**

100 Personnel Services – Salaries				1,255,615.54
-----------------------------------	--	--	--	--------------

<b>Total Personnel Services – Salaries</b>				<b>\$1,255,615.54</b>
--	--	--	--	-----------------------

**200 Personnel Services – Employee Benefits**

210 Group Insurance – Contracted Provider				3,878.63
220 Social Security Contributions				92,690.77
230 PSERS Retirement Contributions				430,395.44
250 Unemployment Compensation				610.76
260 Workers' Compensation				5,283.95
270 Group Insurance – Self-Insurance				335,111.11

<b>Total Personnel Services – Employee Benefits</b>				<b>\$867,970.66</b>
---	--	--	--	---------------------

**300 Purchased Professional and Technical Services**

330 Other Professional Services				11,900.00
390 Other Purchased Professional and Technical Services			14,879.90	38,582.40

<b>Total Purchased Professional and Technical Services</b>				<b>\$14,879.90</b>	<b>\$50,482.40</b>
--	--	--	--	--------------------	--------------------

**400 Purchased Property Services**

410 Cleaning Services			472,782.76	1,414,987.22
420 Utility Services				253,961.53
430 Repairs and Maintenance Services		24,915.00		1,125,780.48
440 Rentals				16,556.91
460 Extermination Services				9,357.00
490 Other Purchased Property Services				3,303.33

<b>Total Purchased Property Services</b>				<b>\$497,697.76</b>	<b>\$2,823,946.47</b>
--	--	--	--	---------------------	-----------------------

**500 Other Purchased Services**

522 Automotive Liability Insurance				17,204.00
523 General Property and Liability Insurance				1,203,733.67
529 Other Insurance				223,244.00
580 Travel				80.34

<b>Total Other Purchased Services</b>				<b>\$1,444,262.01</b>
---------------------------------------	--	--	--	-----------------------

**600 Supplies**

610 General Supplies	161,768.41	177,533.72	15,170.50	354,472.63
620 Energy				1,399,904.68
650 Supplies & Fees – Technology Related				8,919.94

<b>Total Supplies</b>				<b>\$161,768.41</b>	<b>\$177,533.72</b>	<b>\$15,170.50</b>	<b>\$1,763,297.25</b>
-----------------------	--	--	--	---------------------	---------------------	--------------------	-----------------------

**800 Other Objects**

810 Dues and Fees				2,073.40
-------------------	--	--	--	----------

<b>Total Other Objects</b>				<b>\$2,073.40</b>
----------------------------	--	--	--	-------------------

<b>Total 2620 Operation of Buildings Services</b>				<b>\$161,768.41</b>	<b>\$177,533.72</b>	<b>\$527,748.16</b>	<b>\$8,207,647.73</b>
---	--	--	--	---------------------	---------------------	---------------------	-----------------------



LEA : 124151902 Coatesville Area SD

Printed 12/20/2022 12:08:03 PM

**General Fund (10)**

	<u>Elementary</u>	<u>Secondary</u>	<u>Federal</u>	<u>Total</u>
<b>2630 Care and Upkeep of Grounds Services</b>				
<b>100 Personnel Services – Salaries</b>				
100 Personnel Services – Salaries				99,791.85
<b>Total Personnel Services – Salaries</b>				<b>\$99,791.85</b>
<b>200 Personnel Services – Employee Benefits</b>				
210 Group Insurance – Contracted Provider				323.05
220 Social Security Contributions				7,252.00
230 PSERS Retirement Contributions				34,530.15
250 Unemployment Compensation				33.88
260 Workers' Compensation				419.85
270 Group Insurance – Self-Insurance				36,210.19
<b>Total Personnel Services – Employee Benefits</b>				<b>\$78,769.12</b>
<b>400 Purchased Property Services</b>				
410 Cleaning Services				315,571.70
430 Repairs and Maintenance Services				4,747.66
490 Other Purchased Property Services				1,200.00
<b>Total Purchased Property Services</b>				<b>\$321,519.36</b>
<b>600 Supplies</b>				
610 General Supplies	24.86	74.58		99.44
<b>Total Supplies</b>	<b>\$24.86</b>	<b>\$74.58</b>		<b>\$99.44</b>
<b>Total 2630 Care and Upkeep of Grounds Services</b>	<b>\$24.86</b>	<b>\$74.58</b>		<b>\$500,179.77</b>

**General Fund (10)**

**2660 Safety and Security Services**

**100 Personnel Services – Salaries**

100 Personnel Services – Salaries				83,608.27
-----------------------------------	--	--	--	-----------

<b>Total Personnel Services – Salaries</b>				<b>\$83,608.27</b>
--	--	--	--	--------------------

**200 Personnel Services – Employee Benefits**

210 Group Insurance – Contracted Provider				300.91
---	--	--	--	--------

220 Social Security Contributions				6,348.45
-----------------------------------	--	--	--	----------

230 PSERS Retirement Contributions				28,898.57
------------------------------------	--	--	--	-----------

250 Unemployment Compensation				19.97
-------------------------------	--	--	--	-------

260 Workers' Compensation				349.36
---------------------------	--	--	--	--------

270 Group Insurance – Self-Insurance				19,281.08
--------------------------------------	--	--	--	-----------

292 Health Savings Accounts				3,000.00
-----------------------------	--	--	--	----------

<b>Total Personnel Services – Employee Benefits</b>				<b>\$58,198.34</b>
---	--	--	--	--------------------

**300 Purchased Professional and Technical Services**

330 Other Professional Services				19,556.75
---------------------------------	--	--	--	-----------

350 Security / Safety Services				66,247.38
--------------------------------	--	--	--	-----------

<b>Total Purchased Professional and Technical Services</b>				<b>\$85,804.13</b>
--	--	--	--	--------------------

**400 Purchased Property Services**

430 Repairs and Maintenance Services				158.45
--------------------------------------	--	--	--	--------

<b>Total Purchased Property Services</b>				<b>\$158.45</b>
--	--	--	--	-----------------

**500 Other Purchased Services**

580 Travel				651.29
------------	--	--	--	--------

<b>Total Other Purchased Services</b>				<b>\$651.29</b>
---------------------------------------	--	--	--	-----------------

**600 Supplies**

610 General Supplies	854.46	854.45		1,708.91
----------------------	--------	--------	--	----------

650 Supplies & Fees – Technology Related				1,768.76
--	--	--	--	----------

<b>Total Supplies</b>	<b>\$854.46</b>	<b>\$854.45</b>		<b>\$3,477.67</b>
-----------------------	-----------------	-----------------	--	-------------------

<b>Total 2660 Safety and Security Services</b>	<b>\$854.46</b>	<b>\$854.45</b>		<b>\$231,898.15</b>
--	-----------------	-----------------	--	---------------------

**General Fund (10)**

**2700 Student Transportation Services**

	<u>Elementary</u>	<u>Secondary</u>	<u>Federal</u>	<u>Total</u>
--	-------------------	------------------	----------------	--------------

**100 Personnel Services – Salaries**

100 Personnel Services – Salaries				53,374.93
-----------------------------------	--	--	--	-----------

<b>Total Personnel Services – Salaries</b>				<b>\$53,374.93</b>
--	--	--	--	--------------------

**200 Personnel Services – Employee Benefits**

210 Group Insurance – Contracted Provider				214.33
---	--	--	--	--------

220 Social Security Contributions				3,956.87
-----------------------------------	--	--	--	----------

230 PSERS Retirement Contributions				18,649.28
------------------------------------	--	--	--	-----------

250 Unemployment Compensation				18.19
-------------------------------	--	--	--	-------

260 Workers' Compensation				216.72
---------------------------	--	--	--	--------

270 Group Insurance – Self-Insurance				14,666.28
--------------------------------------	--	--	--	-----------

292 Health Savings Accounts				3,000.00
-----------------------------	--	--	--	----------

<b>Total Personnel Services – Employee Benefits</b>				<b>\$40,721.67</b>
---	--	--	--	--------------------

**300 Purchased Professional and Technical Services**

330 Other Professional Services				192,500.00
---------------------------------	--	--	--	------------

390 Other Purchased Professional and Technical Services			85,355.00	100,365.00
---	--	--	-----------	------------

<b>Total Purchased Professional and Technical Services</b>			<b>\$85,355.00</b>	<b>\$292,865.00</b>
--	--	--	--------------------	---------------------

**500 Other Purchased Services**

513 Contracted Carriers				9,909,557.20
-------------------------	--	--	--	--------------

516 Student Transportation Services From the IU				19,472.51
---	--	--	--	-----------

<b>Total Other Purchased Services</b>				<b>\$9,929,029.71</b>
---------------------------------------	--	--	--	-----------------------

**600 Supplies**

610 General Supplies				7,876.34
----------------------	--	--	--	----------

650 Supplies & Fees – Technology Related				239.77
--	--	--	--	--------

<b>Total Supplies</b>				<b>\$8,116.11</b>
-----------------------	--	--	--	-------------------

<b>Total 2700 Student Transportation Services</b>			<b>\$85,355.00</b>	<b>\$10,324,107.42</b>
---	--	--	--------------------	------------------------



**General Fund (10)**

**2711 Supervision of Student Transportation Services – Head of Component**

	<u>Elementary</u>	<u>Secondary</u>	<u>Federal</u>	<u>Total</u>
<b>100 Personnel Services – Salaries</b>				
100 Personnel Services – Salaries				53,374.93
<b>Total Personnel Services – Salaries</b>				<b>\$53,374.93</b>
<b>200 Personnel Services – Employee Benefits</b>				
210 Group Insurance – Contracted Provider				214.33
220 Social Security Contributions				3,956.87
230 PSERS Retirement Contributions				18,649.28
250 Unemployment Compensation				18.19
260 Workers' Compensation				216.72
270 Group Insurance – Self-Insurance				14,666.28
292 Health Savings Accounts				3,000.00
<b>Total Personnel Services – Employee Benefits</b>				<b>\$40,721.67</b>
<b>300 Purchased Professional and Technical Services</b>				
330 Other Professional Services				192,500.00
390 Other Purchased Professional and Technical Services			85,355.00	100,365.00
<b>Total Purchased Professional and Technical Services</b>			<b>\$85,355.00</b>	<b>\$292,865.00</b>
<b>600 Supplies</b>				
610 General Supplies				7,876.34
650 Supplies & Fees – Technology Related				239.77
<b>Total Supplies</b>				<b>\$8,116.11</b>
<b>Total 2711 Supervision of Student Transportation Services – Head of Component</b>			<b>\$85,355.00</b>	<b>\$395,077.71</b>

LEA : 124151902 Coatesville Area SD

Printed 12/20/2022 12:08:03 PM

General Fund (10)

2720 Vehicle Operation Services

Elementary

Secondary

Federal

Total

500 Other Purchased Services

513 Contracted Carriers

8,722,006.44

516 Student Transportation Services From the IU

19,472.51

**Total Other Purchased Services**

**\$8,741,478.95**

**Total 2720 Vehicle Operation Services**

**\$8,741,478.95**

LEA : 124151902 Coatesville Area SD

Printed 12/20/2022 12:08:03 PM

General Fund (10)

2750 Nonpublic Transportation

Elementary

Secondary

Federal

Total

500 Other Purchased Services

513 Contracted Carriers

1,187,550.76

**Total Other Purchased Services**

**\$1,187,550.76**

**Total 2750 Nonpublic Transportation**

**\$1,187,550.76**

**General Fund (10)**

**2800 Support Services – Central**

Elementary                      Secondary                      Federal                      Total

<b>100</b>	<b><u>Personnel Services – Salaries</u></b>			
100	Personnel Services – Salaries			352,452.88
<b>Total Personnel Services – Salaries</b>				<b>\$352,452.88</b>
<b>200</b>	<b><u>Personnel Services – Employee Benefits</u></b>			
210	Group Insurance – Contracted Provider			1,259.10
220	Social Security Contributions			25,641.46
230	PSERS Retirement Contributions			120,664.56
240	Tuition Reimbursement			6,192.00
250	Unemployment Compensation			72.88
260	Workers' Compensation			1,458.92
270	Group Insurance – Self-Insurance			61,676.31
292	Health Savings Accounts			9,000.00
<b>Total Personnel Services – Employee Benefits</b>				<b>\$225,965.23</b>
<b>300</b>	<b><u>Purchased Professional and Technical Services</u></b>			
330	Other Professional Services			43,519.66
340	Technical Services			591,802.16
360	Employee Training and Development Services			9,335.98
<b>Total Purchased Professional and Technical Services</b>				<b>\$644,657.80</b>
<b>400</b>	<b><u>Purchased Property Services</u></b>			
430	Repairs and Maintenance Services			1,350.03
440	Rentals			445,165.27
<b>Total Purchased Property Services</b>				<b>\$446,515.30</b>
<b>500</b>	<b><u>Other Purchased Services</u></b>			
520	Insurance – General		158,697.00	158,697.00
530	Communications			336,929.09
580	Travel			665.74
<b>Total Other Purchased Services</b>			<b>\$158,697.00</b>	<b>\$496,291.83</b>
<b>600</b>	<b><u>Supplies</u></b>			
610	General Supplies			9,578.72
650	Supplies & Fees – Technology Related		1,734.83	385,188.97
<b>Total Supplies</b>			<b>\$1,734.83</b>	<b>\$394,767.69</b>
<b>700</b>	<b><u>Property</u></b>			
762	Capitalized Equipment - Replacement			5,489.20
<b>Total Property</b>				<b>\$5,489.20</b>
<b>800</b>	<b><u>Other Objects</u></b>			
810	Dues and Fees			8,775.00
<b>Total Other Objects</b>				<b>\$8,775.00</b>
<b>Total 2800 Support Services – Central</b>			<b>\$160,431.83</b>	<b>\$2,574,914.93</b>





**General Fund (10)**

**2832 Recruitment and Placement Services**

Elementary

Secondary

Federal

Total

**300 Purchased Professional and Technical Services**

330 Other Professional Services

43,519.66

**Total Purchased Professional and Technical Services**

**\$43,519.66**

**500 Other Purchased Services**

580 Travel

665.74

**Total Other Purchased Services**

**\$665.74**

**600 Supplies**

610 General Supplies

1,223.99

650 Supplies & Fees – Technology Related

11,211.15

**Total Supplies**

**\$12,435.14**

**800 Other Objects**

810 Dues and Fees

1,775.00

**Total Other Objects**

**\$1,775.00**

**Total 2832 Recruitment and Placement Services**

**\$58,395.54**

**General Fund (10)**

**2833 Staff Accounting Services**

**100 Personnel Services – Salaries**

100 Personnel Services – Salaries

**Total Personnel Services – Salaries**

**200 Personnel Services – Employee Benefits**

210 Group Insurance – Contracted Provider

220 Social Security Contributions

230 PSERS Retirement Contributions

250 Unemployment Compensation

260 Workers' Compensation

270 Group Insurance – Self-Insurance

292 Health Savings Accounts

**Total Personnel Services – Employee Benefits**

**Total 2833 Staff Accounting Services**

	<u>Elementary</u>	<u>Secondary</u>	<u>Federal</u>	<u>Total</u>
				352,452.88
				<b>\$352,452.88</b>
				1,259.10
				25,641.46
				120,664.56
				72.88
				1,458.92
				61,676.31
				9,000.00
				<b>\$219,773.23</b>
				<b>\$572,226.11</b>

General Fund (10)

	<u>Elementary</u>	<u>Secondary</u>	<u>Federal</u>	<u>Total</u>
<b>2834 Staff Development Services – Non-Instructional, Certified Staff Only</b>				
<b>200 Personnel Services – Employee Benefits</b>				
240 Tuition Reimbursement				6,192.00
<b>Total Personnel Services – Employee Benefits</b>				<b>\$6,192.00</b>
<b>300 Purchased Professional and Technical Services</b>				
360 Employee Training and Development Services				6,632.35
<b>Total Purchased Professional and Technical Services</b>				<b>\$6,632.35</b>
<b>Total 2834 Staff Development Services – Non-Instructional, Certified Staff Only</b>				<b>\$12,824.35</b>

LEA : 124151902 Coatesville Area SD

Printed 12/20/2022 12:08:03 PM

General Fund (10)

2836 Staff Development Services – Non-Instructional, Non-Certified Staff Only

Elementary

Secondary

Federal

Total

300 Purchased Professional and Technical Services

360 Employee Training and Development Services

2,703.63

**Total Purchased Professional and Technical Services**

**\$2,703.63**

**Total 2836 Staff Development Services – Non-Instructional, Non-Certified Staff Only**

**\$2,703.63**

**General Fund (10)**

**2840 Data Processing Services**

Elementary                      Secondary                      Federal                      Total

**300 Purchased Professional and Technical Services**

340 Technical Services 591,802.16

**Total Purchased Professional and Technical Services \$591,802.16**

**400 Purchased Property Services**

430 Repairs and Maintenance Services 1,350.03

440 Rentals 445,165.27

**Total Purchased Property Services \$446,515.30**

**500 Other Purchased Services**

520 Insurance – General 158,697.00 158,697.00

530 Communications 336,929.09

**Total Other Purchased Services \$158,697.00 \$495,626.09**

**600 Supplies**

610 General Supplies 8,354.73

650 Supplies & Fees – Technology Related 1,734.83 373,977.82

**Total Supplies \$1,734.83 \$382,332.55**

**700 Property**

762 Capitalized Equipment - Replacement 5,489.20

**Total Property \$5,489.20**

**800 Other Objects**

810 Dues and Fees 7,000.00

**Total Other Objects \$7,000.00**

**Total 2840 Data Processing Services \$160,431.83 \$1,928,765.30**

LEA : 124151902 Coatesville Area SD

Printed 12/20/2022 12:08:03 PM

General Fund (10)

2900 Other Support Services

500 Other Purchased Services

- 530 Communications
- 595 IU Payments By Withholding

Total Other Purchased Services

Total 2900 Other Support Services

<u>Elementary</u>	<u>Secondary</u>	<u>Federal</u>	<u>Total</u>
		65,494.00	90,406.13
			47,445.34
		<b>\$65,494.00</b>	<b>\$137,851.47</b>
		<b>\$65,494.00</b>	<b>\$137,851.47</b>

LEA : 124151902 Coatesville Area SD

Printed 12/20/2022 12:08:03 PM

General Fund (10)

2910 Support Services Not Listed Elsewhere In the 2000 Series

Elementary

Secondary

Federal

Total

500 Other Purchased Services

530 Communications

65,494.00

90,406.13

595 IU Payments By Withholding

47,445.34

**Total Other Purchased Services**

**\$65,494.00**

**\$137,851.47**

**Total 2910 Support Services Not Listed Elsewhere In the 2000 Series**

**\$65,494.00**

**\$137,851.47**



**General Fund (10)**

	<u>Total</u>
<b>3000 Operation of Non-Instructional Services</b>	
<b>100 Personnel Services – Salaries</b>	
100 Personnel Services – Salaries	833,261.11
<b>Total Personnel Services – Salaries</b>	<b>\$833,261.11</b>
<b>200 Personnel Services – Employee Benefits</b>	
210 Group Insurance – Contracted Provider	742.08
220 Social Security Contributions	62,128.20
230 PSERS Retirement Contributions	265,814.75
250 Unemployment Compensation	707.59
260 Workers’ Compensation	3,592.93
270 Group Insurance – Self-Insurance	42,557.11
292 Health Savings Accounts	6,386.54
<b>Total Personnel Services – Employee Benefits</b>	<b>\$381,929.20</b>
<b>300 Purchased Professional and Technical Services</b>	
330 Other Professional Services	99,825.00
390 Other Purchased Professional and Technical Services	14,371.47
<b>Total Purchased Professional and Technical Services</b>	<b>\$114,196.47</b>
<b>400 Purchased Property Services</b>	
410 Cleaning Services	5,994.20
430 Repairs and Maintenance Services	32,609.45
<b>Total Purchased Property Services</b>	<b>\$38,603.65</b>
<b>500 Other Purchased Services</b>	
510 Student Transportation Services	96,483.15
530 Communications	100.00
580 Travel	831.29
591 Services Purchased Locally	7,686.00
<b>Total Other Purchased Services</b>	<b>\$105,100.44</b>
<b>600 Supplies</b>	
610 General Supplies	105,565.22
630 Food	1,003.34
640 Books and Periodicals	15,151.11
650 Supplies & Fees – Technology Related	22,185.32
<b>Total Supplies</b>	<b>\$143,904.99</b>
<b>700 Property</b>	
762 Capitalized Equipment - Replacement	5,633.23
<b>Total Property</b>	<b>\$5,633.23</b>
<b>800 Other Objects</b>	
810 Dues and Fees	19,083.70
<b>Total Other Objects</b>	<b>\$19,083.70</b>
<b>Total 3000 Operation of Non-Instructional Services</b>	<b>\$1,641,712.79</b>

LEA : 124151902 Coatesville Area SD

Printed 12/20/2022 12:08:08 PM

**General Fund (10)**

**3200 Student Activities**

	<u>Elementary</u>	<u>Secondary</u>	<u>Federal</u>	<u>Total</u>
<b>100 Personnel Services – Salaries</b>				
100 Personnel Services – Salaries			8,500.00	807,213.08
<b>Total Personnel Services – Salaries</b>			<b>\$8,500.00</b>	<b>\$807,213.08</b>
<b>200 Personnel Services – Employee Benefits</b>				
210 Group Insurance – Contracted Provider				637.82
220 Social Security Contributions			646.77	60,267.51
230 PSERS Retirement Contributions			2,838.88	256,713.44
250 Unemployment Compensation			43.29	601.48
260 Workers' Compensation			30.39	3,472.97
270 Group Insurance – Self-Insurance				38,993.22
292 Health Savings Accounts				4,800.00
<b>Total Personnel Services – Employee Benefits</b>			<b>\$3,559.33</b>	<b>\$365,486.44</b>
<b>300 Purchased Professional and Technical Services</b>				
330 Other Professional Services				99,825.00
390 Other Purchased Professional and Technical Services				13,846.47
<b>Total Purchased Professional and Technical Services</b>				<b>\$113,671.47</b>
<b>400 Purchased Property Services</b>				
410 Cleaning Services				5,994.20
430 Repairs and Maintenance Services				32,609.45
<b>Total Purchased Property Services</b>				<b>\$38,603.65</b>
<b>500 Other Purchased Services</b>				
510 Student Transportation Services				96,483.15
580 Travel				831.29
<b>Total Other Purchased Services</b>				<b>\$97,314.44</b>
<b>600 Supplies</b>				
610 General Supplies			5,912.76	100,823.74
650 Supplies & Fees – Technology Related				11,160.00
<b>Total Supplies</b>			<b>\$5,912.76</b>	<b>\$111,983.74</b>
<b>700 Property</b>				
762 Capitalized Equipment - Replacement				5,633.23
<b>Total Property</b>				<b>\$5,633.23</b>
<b>800 Other Objects</b>				
810 Dues and Fees				19,083.70
<b>Total Other Objects</b>				<b>\$19,083.70</b>
<b>Total 3200 Student Activities</b>			<b>\$17,972.09</b>	<b>\$1,558,989.75</b>

**General Fund (10)**

**3300 Community Services**

**100 Personnel Services – Salaries**

	<u>Elementary</u>	<u>Secondary</u>	<u>Federal</u>	<u>Total</u>
100 Personnel Services – Salaries			26,048.03	26,048.03
<b>Total Personnel Services – Salaries</b>			<b>\$26,048.03</b>	<b>\$26,048.03</b>

**200 Personnel Services – Employee Benefits**

210 Group Insurance – Contracted Provider			104.26	104.26
220 Social Security Contributions			1,860.69	1,860.69
230 PSERS Retirement Contributions			9,101.31	9,101.31
250 Unemployment Compensation			106.11	106.11
260 Workers' Compensation			119.96	119.96
270 Group Insurance – Self-Insurance			3,563.89	3,563.89
292 Health Savings Accounts			1,586.54	1,586.54
<b>Total Personnel Services – Employee Benefits</b>			<b>\$16,442.76</b>	<b>\$16,442.76</b>

**300 Purchased Professional and Technical Services**

390 Other Purchased Professional and Technical Services			525.00	525.00
<b>Total Purchased Professional and Technical Services</b>			<b>\$525.00</b>	<b>\$525.00</b>

**500 Other Purchased Services**

530 Communications			100.00	100.00
591 Services Purchased Locally			7,686.00	7,686.00
<b>Total Other Purchased Services</b>			<b>\$7,786.00</b>	<b>\$7,786.00</b>

**600 Supplies**

610 General Supplies			4,230.65	4,741.48
630 Food			1,003.34	1,003.34
640 Books and Periodicals			15,151.11	15,151.11
650 Supplies & Fees – Technology Related			11,025.32	11,025.32
<b>Total Supplies</b>			<b>\$31,410.42</b>	<b>\$31,921.25</b>

**Total 3300 Community Services**

			<b>\$82,212.21</b>	<b>\$82,723.04</b>
--	--	--	--------------------	--------------------

LEA : 124151902 Coatesville Area SD

Printed 12/20/2022 12:08:12 PM

**General Fund (10)**

**4000 Facilities Acquisition, Construction and Improvement Services**

**Total**

**700 Property**

762 Capitalized Equipment - Replacement

1,378,000.00

**Total Property**

**\$1,378,000.00**

**Total 4000 Facilities Acquisition, Construction and Improvement Services**

**\$1,378,000.00**

LEA : 124151902 Coatesville Area SD

Printed 12/20/2022 12:08:12 PM

General Fund (10)

4600 Existing Building Improvement Services

Elementary

Secondary

Federal

Total

700 Property

762 Capitalized Equipment - Replacement

1,378,000.00

1,378,000.00

**Total Property**

**\$1,378,000.00**

**\$1,378,000.00**

**Total 4600 Existing Building Improvement Services**

**\$1,378,000.00**

**\$1,378,000.00**

**General Fund (10)**

**5000 Other Expenditures and Financing Uses**

**Total**

**800 Other Objects**

830 Interest 5,386,520.59

880 Refunds of Prior Years' Receipts 575.01

**Total Other Objects \$5,387,095.60**

**900 Other Uses of Funds**

910 Redemption of Principal 793,000.00

920 Authority Obligations 1,360,000.00

**Total Other Uses of Funds \$2,153,000.00**

**Total 5000 Other Expenditures and Financing Uses \$7,540,095.60**

LEA : 124151902 Coatesville Area SD

Printed 12/20/2022 12:08:21 PM

General Fund (10)

5100 Debt Service / Other Expenditures and Financing Uses	<u>Elementary</u>	<u>Secondary</u>	<u>Federal</u>	<u>Total</u>
<b>800 Other Objects</b>				
830 Interest				5,386,520.59
880 Refunds of Prior Years' Receipts				575.01
<b>Total Other Objects</b>				<b>\$5,387,095.60</b>
<b>900 Other Uses of Funds</b>				
910 Redemption of Principal				793,000.00
920 Authority Obligations				1,360,000.00
<b>Total Other Uses of Funds</b>				<b>\$2,153,000.00</b>
<b>Total 5100 Debt Service / Other Expenditures and Financing Uses</b>				<b>\$7,540,095.60</b>

LEA : 124151902 Coatesville Area SD

Printed 12/20/2022 12:08:21 PM

General Fund (10)

5110 Debt Service

Elementary

Secondary

Federal

Total

800 Other Objects

830 Interest

5,386,520.59

**Total Other Objects**

**\$5,386,520.59**

900 Other Uses of Funds

910 Redemption of Principal

793,000.00

920 Authority Obligations

1,360,000.00

**Total Other Uses of Funds**

**\$2,153,000.00**

**Total 5110 Debt Service**

**\$7,539,520.59**



LEA : 124151902 Coatesville Area SD

Printed 12/20/2022 12:08:21 PM

General Fund (10)

	<u>Elementary</u>	<u>Secondary</u>	<u>Federal</u>	<u>Total</u>
5130 Refund of Prior Year Revenues / Receipts				
800 <u>Other Objects</u>				
880 Refunds of Prior Years' Receipts				575.01
<b>Total Other Objects</b>				<b>\$575.01</b>
<b>Total 5130 Refund of Prior Year Revenues / Receipts</b>				<b>\$575.01</b>

**Other Capital Projects Fund (39)**

**4000 Facilities Acquisition, Construction and Improvement Services**

**Total**

**300 Purchased Professional and Technical Services**

330 Other Professional Services

101,693.75

**Total Purchased Professional and Technical Services**

**\$101,693.75**

**400 Purchased Property Services**

430 Repairs and Maintenance Services

1,803,636.54

450 Construction Services

1,437,581.06

**Total Purchased Property Services**

**\$3,241,217.60**

**Total 4000 Facilities Acquisition, Construction and Improvement Services**

**\$3,342,911.35**

LEA : 124151902 Coatesville Area SD

Printed 12/20/2022 12:08:16 PM

**Other Capital Projects Fund (39)**

**4200 Existing Site Improvement Services**

Elementary

Secondary

Federal

Total

**300 Purchased Professional and Technical Services**

330 Other Professional Services

81,750.00

**Total Purchased Professional and Technical Services**

**\$81,750.00**

**400 Purchased Property Services**

450 Construction Services

2,925.00

**Total Purchased Property Services**

**\$2,925.00**

**Total 4200 Existing Site Improvement Services**

**\$84,675.00**

LEA : 124151902 Coatesville Area SD

Printed 12/20/2022 12:08:16 PM

Other Capital Projects Fund (39)

	<u>Elementary</u>	<u>Secondary</u>	<u>Federal</u>	<u>Total</u>
<b>4600 Existing Building Improvement Services</b>				
<b>300 <u>Purchased Professional and Technical Services</u></b>				
330 Other Professional Services				19,943.75
<b>Total Purchased Professional and Technical Services</b>				<b>\$19,943.75</b>
<b>400 <u>Purchased Property Services</u></b>				
430 Repairs and Maintenance Services				1,803,636.54
450 Construction Services				1,434,656.06
<b>Total Purchased Property Services</b>				<b>\$3,238,292.60</b>
<b>Total 4600 Existing Building Improvement Services</b>				<b>\$3,258,236.35</b>

	<u>General Fund(10)</u>	<u>Student Sponsored Activity Fund(21)</u>	<u>Public Purpose Trust(27)</u>	<u>Other Compt Approved (28)</u>	<u>Athletic / Activity(29)</u>
<b>1000 Instruction</b>					
1100 Regular Programs - Elementary / Secondary	71,482,940.86				
1200 Special Programs - Elementary / Secondary	54,485,326.27				
1300 Vocational Education	3,632,383.03				
1400 Other Instructional Programs - Elementary / Secondary	102,575.39				
1500 Nonpublic School Programs	131,981.73				
<b>Total Instruction</b>	<b>\$129,835,207.28</b>				
<b>2000 Support Services</b>					
2100 Support Services - Students	3,759,132.92				
2200 Support Services - Instructional Staff	3,043,714.41				
2300 Support Services - Administration	7,044,803.36				
2400 Support Services - Pupil Health	1,020,814.16				
2500 Support Services - Business	1,320,081.21				
2600 Operation and Maintenance of Plant Services	9,242,254.58				
2700 Student Transportation Services	10,324,107.42				
2800 Support Services - Central	2,574,914.93				
2900 Other Support Services	137,851.47				
<b>Total Support Services</b>	<b>\$38,467,674.46</b>				
<b>3000 Operation of Non-Instructional Services</b>					
3200 Student Activities	1,558,989.75				
3300 Community Services	82,723.04				
<b>Total Operation of Non-Instructional Services</b>	<b>\$1,641,712.79</b>				
<b>4000 Facilities Acquisition, Construction and Improvement Services</b>					
4200 Existing Site Improvement Services					
4600 Existing Building Improvement Services	1,378,000.00				
<b>Total Facilities Acquisition, Construction and Improvement</b>	<b>\$1,378,000.00</b>				
<b>5000 Other Expenditures and Financing Uses</b>					
5100 Debt Service / Other Expenditures and Financing Uses	7,540,095.60				
<b>Total Other Expenditures and Financing Uses</b>	<b>\$7,540,095.60</b>				
<b>TOTAL ACTUAL EXPENDITURES &amp; OTHER FINANCING USES</b>	<b>\$178,862,690.13</b>				

	<u>Capital Reserve (690.1850)(31)</u>	<u>Capital Reserve (1431)(32)</u>	<u>Other Capital Projects Fund(39)</u>	<u>Debt Service(40)</u>	<u>Permanent(90)</u>
<b>1000 Instruction</b>					
1100 Regular Programs - Elementary / Secondary					
1200 Special Programs - Elementary / Secondary					
1300 Vocational Education					
1400 Other Instructional Programs - Elementary / Secondary					
1500 Nonpublic School Programs					
<b>Total Instruction</b>					
<b>2000 Support Services</b>					
2100 Support Services - Students					
2200 Support Services - Instructional Staff					
2300 Support Services - Administration					
2400 Support Services - Pupil Health					
2500 Support Services - Business					
2600 Operation and Maintenance of Plant Services					
2700 Student Transportation Services					
2800 Support Services - Central					
2900 Other Support Services					
<b>Total Support Services</b>					
<b>3000 Operation of Non-Instructional Services</b>					
3200 Student Activities					
3300 Community Services					
<b>Total Operation of Non-Instructional Services</b>					
<b>4000 Facilities Acquisition, Construction and Improvement Services</b>					
4200 Existing Site Improvement Services			84,675.00		
4600 Existing Building Improvement Services			3,258,236.35		
<b>Total Facilities Acquisition, Construction and Improvement</b>			<b>\$3,342,911.35</b>		
<b>5000 Other Expenditures and Financing Uses</b>					
5100 Debt Service / Other Expenditures and Financing Uses					
<b>Total Other Expenditures and Financing Uses</b>					
<b>TOTAL ACTUAL EXPENDITURES &amp; OTHER FINANCING USES</b>			<b>\$3,342,911.35</b>		

**Total**

<b>1000 Instruction</b>	
1100 Regular Programs - Elementary / Secondary	71,482,940.86
1200 Special Programs - Elementary / Secondary	54,485,326.27
1300 Vocational Education	3,632,383.03
1400 Other Instructional Programs - Elementary / Secondary	102,575.39
1500 Nonpublic School Programs	131,981.73
<b>Total Instruction</b>	<b>\$129,835,207.28</b>
<b>2000 Support Services</b>	
2100 Support Services - Students	3,759,132.92
2200 Support Services - Instructional Staff	3,043,714.41
2300 Support Services - Administration	7,044,803.36
2400 Support Services - Pupil Health	1,020,814.16
2500 Support Services - Business	1,320,081.21
2600 Operation and Maintenance of Plant Services	9,242,254.58
2700 Student Transportation Services	10,324,107.42
2800 Support Services - Central	2,574,914.93
2900 Other Support Services	137,851.47
<b>Total Support Services</b>	<b>\$38,467,674.46</b>
<b>3000 Operation of Non-Instructional Services</b>	
3200 Student Activities	1,558,989.75
3300 Community Services	82,723.04
<b>Total Operation of Non-Instructional Services</b>	<b>\$1,641,712.79</b>
<b>4000 Facilities Acquisition, Construction and Improvement Services</b>	
4200 Existing Site Improvement Services	84,675.00
4600 Existing Building Improvement Services	4,636,236.35
<b>Total Facilities Acquisition, Construction and Improvement</b>	<b>\$4,720,911.35</b>
<b>5000 Other Expenditures and Financing Uses</b>	
5100 Debt Service / Other Expenditures and Financing Uses	7,540,095.60
<b>Total Other Expenditures and Financing Uses</b>	<b>\$7,540,095.60</b>
<b>TOTAL ACTUAL EXPENDITURES &amp; OTHER FINANCING USES</b>	<b>\$182,205,601.48</b>

LEA : 124151902 Coatesville Area SD

Printed 12/20/2022 12:08:38 PM

**PSERS Salary Data (Salary Data should relate to the General Fund only)**

<b>Amount Description</b>	<b>Amount</b>
Total Salary Base for salaries subject to PSERS withholding	34,362,453.70
Total Federally Funded salaries subject to PSERS withholding	2,189,630.26
	<hr/>

**Title I Expenditure Data**

<b>Amount Description</b>	<b>Amount</b>
Expenditures Funded with Current Title I Funds	635,139.97
Expenditures Funded with Carry over Title I Funds	975,275.14
<b>Total Title I Expenditure Data</b>	<hr/> <b>\$1,610,415.11</b> <hr/>

**Title IV Revenue Data**

<b>Amount Description</b>	<b>Amount</b>
Revenue from Title IV-A-1: Student Support and Academic Enrichment Grants	98,052.44
Revenue from Title IV-B: 21st Century Community Learning Centers	<hr/>

**Title V Revenue Data**

<b>Amount Description</b>	<b>Amount</b>
Revenue from Title V-B-2: Rural and Low-Income School Programs	<hr/>
Revenue from Title V-B-1: Small Rural School Achievement (Directly from the Federal Govt)	<hr/>



1 . <u>Current Special Education Expenditures within &lt;b&gt;Function 1000.&lt;/b&gt;\r\nSee list of exclusions in the note below.</u>	27,036,938.73
2 . <u>Current Special Education Expenditures within &lt;b&gt;Function 2000.&lt;/b&gt;\r\nSee list of exclusions in the note below.</u>	8,497,753.27
3 . <u>Current Special Education Expenditures within &lt;b&gt;Sub-Function 2100.&lt;/b&gt;\r\nThis data should also be included in line 2 above.\r\nSee list of exclusions in the note below.</u>	864,600.57
4 . <u>Current Special Education Expenditures within &lt;b&gt;Sub-Function 2200.&lt;/b&gt;\r\nThis data should also be included in line 2 above.\r\nSee list of exclusions in the note below.</u>	640,032.76
5 . <u>Current Special Education Expenditures within &lt;b&gt;Sub-Function 2700.&lt;/b&gt;\r\nThis data should also be included in line 2 above.\r\nSee list of exclusions in the note below.</u>	2,370,066.03
6 . <u>Current Special Education Expenditures within &lt;b&gt;Sub-Function 3100.&lt;/b&gt;\r\nSee list of exclusions in the note below.</u>	623,292.46
7 . <u>Current Special Education Expenditures within &lt;b&gt;Sub-Function 3200.&lt;/b&gt;\r\nSee list of exclusions in the note below.</u>	357,272.00

Note: The Current Special Education Expenditure amounts for each line should be calculated as follows:

- \* Include the total expenditures for special education costs from all funds for the function/sub-function requested
- \* Exclude data from sub-functions: 1243,1450,1500,1600,1807,2280,2450,2750,2990
- \* Exclude data from objects: 322,511,512,516,561,562,564,566,592,593,594,595,596,597,700,830,899

**Benefits for Staff Relative to Collective Bargaining Agreements**

	OBJECT	COVERED	NOT COVERED	TOTAL
<b>10 General Fund</b>				
	211 Medical Insurance			
	212 Dental Insurance			
	215 Eye Care Insurance			
	216 Prescription Insurance			
	271 Self-Insurance Medical Benefits	6,265,597.49		6,265,597.49
	272 Self-Insurance Dental Benefits	495,153.39		495,153.39
	275 Self-Insurance Eye Care Benefits	32,563.29		32,563.29
	276 Self-Insurance Prescription Benefits	10,964.83		10,964.83
	<b>FUND TOTAL</b>	<b>\$6,804,279.00</b>		<b>\$6,804,279.00</b>
<b>50 Enterprise Fund</b>				
	211 Medical Insurance			
	212 Dental Insurance			
	215 Eye Care Insurance			
	216 Prescription Insurance			
	271 Self-Insurance Medical Benefits	110,995.33		110,995.33
	272 Self-Insurance Dental Benefits	7,925.49		7,925.49
	275 Self-Insurance Eye Care Benefits	536.20		536.20
	276 Self-Insurance Prescription Benefits	1,857.91		1,857.91
	<b>FUND TOTAL</b>	<b>\$121,314.93</b>		<b>\$121,314.93</b>
<b>60 Internal Service Fund</b>	No Self Insurance data to report			
	211 Medical Insurance			
	212 Dental Insurance			
	215 Eye Care Insurance			
	216 Prescription Insurance			
	271 Self-Insurance Medical Benefits			
	272 Self-Insurance Dental Benefits			
	275 Self-Insurance Eye Care Benefits			
	276 Self-Insurance Prescription Benefits			
	<b>FUND TOTAL</b>			
<b>Total of All Funds</b>		<b>\$6,925,593.93</b>		<b>\$6,925,593.93</b>

LEA : 124151902 Coatesville Area SD

Printed 12/20/2022 12:08:56 PM

Function	Special Education (Prior Year)	Nonspecial Education (Prior Year)	Total (Prior Year)	Special Education (Current Year)	Nonspecial Education (Current Year)	Total (Current Year)
2120 Guidance Services	531,583.00	1,791,275.00	2,322,858.00	521,485.66	1,757,250.01	2,278,735.67
2140 Psychological Services	151,401.00	515,575.52	666,976.52	156,743.54	533,768.81	690,512.35
2150 Speech Pathology and Audiology Services						
2160 Social Work Services						
2260 Instruction and Curriculum Development Services	369,871.00	1,259,425.09	1,629,296.09	442,634.00	1,507,185.94	1,949,819.94
2350 Legal and Accounting Services	161,485.00	549,903.02	711,388.02	213,574.83	727,283.94	940,858.77
2420 Medical Services	216,104.00	706,579.11	922,683.11	221,282.79	723,511.83	944,794.62
2440 Nursing Services	43,353.50		43,353.50	34,532.95	39,592.53	74,125.48
2700 Student Transportation Services	1,947,958.00	6,633,356.34	8,581,314.34	2,343,571.96	7,980,535.46	10,324,107.42
<b>Total</b>	<b>\$3,421,755.50</b>	<b>\$11,456,114.08</b>	<b>\$14,877,869.58</b>	<b>\$3,933,825.73</b>	<b>\$13,269,128.52</b>	<b>\$17,202,954.25</b>

(PRINCIPAL AMOUNTS ONLY)

**GOVERNMENTAL FUNDS/ ACTIVITIES**

	Short-Term Borrowing	General Obligation Bonds/Notes	Authority Building Obligations	OLTD, Ext Term Fin, Leases	Other Post-Employment Benefits (OPEB)	Compensated Absences	Net Pension Liability	Total
1. Debt at Beginning of Fiscal Year		169,308,782.00	11,105,000.00	574,643.00	12,811,271.00	1,366,189.00	144,168,000.00	339,333,885.00
2. Additional Debt Incurred During Year								
3. Retirements and Repayments		793,000.00	1,360,000.00	183,794.00	1,321,843.00	198,471.00	33,099,000.00	36,956,108.00
4. Debt at End of Fiscal Year		168,515,782.00	9,745,000.00	390,849.00	11,489,428.00	1,167,718.00	111,069,000.00	302,377,777.00
5. Accreted Interest at End Of Fiscal Year		3,553,448.00						3,553,448.00
6. Total Debt and Accreted Interest		172,069,230.00	9,745,000.00	390,849.00	11,489,428.00	1,167,718.00	111,069,000.00	305,931,225.00
7. Current Portion P&I - Due within 1 year		10,285,000.00	1,425,000.00	191,442.00		116,772.00		12,018,214.00
8. Interest Paid during current fiscal year		4,865,270.59	521,250.00	23,911.00				5,410,431.59

(PRINCIPAL AMOUNTS ONLY)

**PROPRIETARY FUNDS**

	Short-Term Borrowing	General Obligation Bonds/Notes	Authority Building Obligations	OLTD, Ext Term Fin, Leases	Other Post-Employment Benefits (OPEB)	Compensated Absences	Net Pension Liability	Total
1. Debt at Beginning of Fiscal Year					195,576.00	77,560.00	2,810,000.00	3,083,136.00
2. Additional Debt Incurred During Year						8,415.00		8,415.00
3. Retirements and Repayments					29,860.00		645,000.00	674,860.00
4. Debt at End of Fiscal Year					165,716.00	85,975.00	2,165,000.00	2,416,691.00
5. Accreted Interest at End Of Fiscal Year								
6. Total Debt and Accreted Interest					165,716.00	85,975.00	2,165,000.00	2,416,691.00
7. Current Portion P&I - Due within 1 year								
8. Interest Paid during current fiscal year								

**Total Principal and Interest Payments Made by Your School - All Funds**

Function	Fund		Principal (910)	Principal (920)	Interest (830)	Total (Principal +Interest)	Misc Other Uses (990)
5110	10	General Fund	793,000.00	1,360,000.00	5,386,520.59	7,539,520.59	
5110	20	Special Revenue Funds					
5110	30	Capital Projects Funds					
5110	40	Debt Service Fund					
5110	90	Permanent Fund					
5120	10	General Fund					
5120	20	Special Revenue Funds					
5120	30	Capital Projects Funds					
5120	40	Debt Service Fund					
5140	10	General Fund					
5140	20	Special Revenue Funds					
5140	30	Capital Projects Funds					
5140	40	Debt Service Fund					
5140	90	Permanent Fund					
<b>Total Debt Payments - Governmental Funds</b>			<b>\$793,000.00</b>	<b>\$1,360,000.00</b>	<b>\$5,386,520.59</b>	<b>\$7,539,520.59</b>	

Function	Fund		Principal (910)	Principal (920)	Interest (830)	Total (Principal +Interest)
5110	50	Enterprise Fund				
5110	60	Internal Service Fund				
5120	50	Enterprise Fund				
5120	60	Internal Service Fund				
5140	50	Enterprise Fund				
5140	60	Internal Service Fund				
<b>Total Debt Payments - Proprietary Funds</b>						

LEA : 124151902 Coatesville Area SD

Printed 12/20/2022 12:09:01 PM

**Debt Details**  
**Governmental Funds/ Activities**

Debt Category	Debt Issue Date (MM/YYYY)	Principal Amounts Only			Debt at End of Fiscal Year	Current Portion Due Within One Year (Principal and Interest)	Interest Paid During Fiscal Year
		Debt at Beginning of Fiscal Year	Additions	Reductions / Repayments			
General Obligation Bonds/Notes – CIB	11/2020	59,493,000.00		654,000.00	58,839,000.00	678,000.00	1,759,596.84
General Obligation Bonds/Notes – CIB	07/2019	22,922,000.00		139,000.00	22,783,000.00	147,000.00	902,673.75
General Obligation Bonds/Notes – CIB	03/2017	44,060,000.00			44,060,000.00	9,460,000.00	2,203,000.00
General Obligation Bonds/Notes – CAB	11/2020	21,050,075.00			21,050,075.00		
General Obligation Bonds/Notes – CAB	11/2020	6,432,770.00			6,432,770.00		
General Obligation Bonds/Notes – CAB	11/2020	3,005,755.00			3,005,755.00		
General Obligation Bonds/Notes – CAB	11/2020	12,345,182.00			12,345,182.00		
Authority Building Obligations – CIB	06/2018	11,105,000.00		1,360,000.00	9,745,000.00	1,425,000.00	521,250.00
Extended Term Financing Agreements		574,643.00		183,794.00	390,849.00	191,442.00	23,911.00
Compensated Absences		1,366,189.00		198,471.00	1,167,718.00	116,772.00	
Other Post-Employment Benefits (OPEB)		12,811,271.00		1,321,843.00	11,489,428.00		
Net Pension Liability		144,168,000.00		33,099,000.00	111,069,000.00		
<b>Totals for Debt Entered:</b>		<b>\$339,333,885.00</b>		<b>\$36,956,108.00</b>	<b>\$302,377,777.00</b>	<b>\$12,018,214.00</b>	<b>\$5,410,431.59</b>

**Bond Details**  
**Proprietary Funds**

Debt Category	Debt Issue Date (MM/YYYY)	Principal Amounts Only			Debt at End of Fiscal Year	Current Portion Due Within One Year (Principal and Interest)	Interest Paid During Fiscal Year
		Debt at Beginning of Fiscal Year	Additions	Reductions / Repayments			
Compensated Absences		77,560.00	8,415.00		85,975.00		
Other Post-Employment Benefits (OPEB)		195,576.00		29,860.00	165,716.00		
Net Pension Liability		2,810,000.00		645,000.00	2,165,000.00		
<b>Totals for Debt Entered:</b>		<b>\$3,083,136.00</b>	<b>\$8,415.00</b>	<b>\$674,860.00</b>	<b>\$2,416,691.00</b>		

LEA : 124151902 Coatesville Area SD

Printed 12/20/2022 12:09:01 PM

**Accreted Interest Detail**  
**Governmental Funds/ Activities**

Debt Category	Debt Issue Date (MM/YYYY)	Beginning Accreted Interest	Additions	Reductions	Ending Accreted Interest	Ending bond Principal	Ending Principal Plus Accreted Interest
General Obligation Bonds/Notes – CAB	11/2020	819,817.00	915,778.00		1,735,595.00	21,050,075.00	22,785,670.00
General Obligation Bonds/Notes – CAB	11/2020	244,169.00	272,306.00		516,475.00	6,432,770.00	6,949,245.00
General Obligation Bonds/Notes – CAB	11/2020	113,501.00	126,605.00		240,106.00	3,005,755.00	3,245,861.00
General Obligation Bonds/Notes – CAB	11/2020	507,160.00	554,112.00		1,061,272.00	12,345,182.00	13,406,454.00
<b>Totals for Debt Entered:</b>		<b>\$1,684,647.00</b>	<b>\$1,868,801.00</b>		<b>\$3,553,448.00</b>	<b>\$42,833,782.00</b>	<b>\$46,387,230.00</b>

**General Fund (10)**

**Section 1: Tuition/Purchased Services as Reported within Expenditure Detail**

	Amount
Tuition Reported in General Fund Expenditures 1000-560	59,615,996.78
Purchased Services in General Fund Expenditures 1000-594 and 1000-597	4,201.22
<b>Section 1 Total</b>	<b>\$59,620,198.00</b>

**Section 2: Tuition Paid to Institution Types During Fiscal Year**

	Tuition Paid For Nonspecial Education	Tuition Paid For Special Education	Total
1 1306 Institutions		4,201.22	4,201.22
2 Institutionalized Children's Programs			
3 Juveniles Incarcerated in Adult Facilities			
4 Residential Treatment Facilities			
5 Other Local Education Agencies	8,099.73	205,025.29	213,125.02
6 Brick and Mortar Charter Schools	26,710,742.59	20,972,434.33	47,683,176.92
7 Cyber Charter Schools	3,278,331.39	1,547,259.88	4,825,591.27
8 Career and Technology Centers	3,405,888.00		3,405,888.00
9 Approved Private Schools		2,616,575.01	2,616,575.01
10 PA Chartered Schools for the Deaf and Blind			
11 Private Residential Rehabilitative Institutions	52,271.87	880.00	53,151.87
12 Juvenile Detention Centers	63,714.29		63,714.29
13 Special Program Jointures			
14 Other Tuition Not Included Elsewhere In This Section	120,465.00	634,309.40	754,774.40
<b>Section 2 Total</b>	<b>\$33,639,512.87</b>	<b>\$25,980,685.13</b>	<b>\$59,620,198.00</b>



LEA : 124151902 Coatesville Area SD

Printed 12/20/2022 12:09:10 PM

**Food Service / Cafeteria Operations Fund (51)**

**3000 Operation of Non-Instructional Services**

**Total**

**100 Personnel Services – Salaries**

100 Personnel Services – Salaries 871,779.00

**Total Personnel Services – Salaries \$871,779.00**

**200 Personnel Services – Employee Benefits**

210 Group Insurance – Contracted Provider 1,456.00

220 Social Security Contributions 65,961.00

230 PSERS Retirement Contributions (35,741.00)

250 Unemployment Compensation 3,497.00

260 Workers' Compensation 3,638.00

270 Group Insurance – Self-Insurance 121,315.00

280 Other Post-Employment Benefits (OPEB) 4,978.00

292 Health Savings Accounts 3,900.00

**Total Personnel Services – Employee Benefits \$169,004.00**

**300 Purchased Professional and Technical Services**

340 Technical Services 9,905.00

390 Other Purchased Professional and Technical Services 200.00

**Total Purchased Professional and Technical Services \$10,105.00**

**400 Purchased Property Services**

430 Repairs and Maintenance Services 12,004.00

440 Rentals 1,350.00

490 Other Purchased Property Services 1,800.00

**Total Purchased Property Services \$15,154.00**

**500 Other Purchased Services**

580 Travel 671.00

**Total Other Purchased Services \$671.00**

**600 Supplies**

610 General Supplies 112,125.00

620 Energy 2,503.00

630 Food 1,513,871.00

650 Supplies & Fees – Technology Related 495.00

**Total Supplies \$1,628,994.00**

**700 Property**

740 Depreciation 8,874.00

**Total Property \$8,874.00**

**800 Other Objects**

810 Dues and Fees 5,387.00

**Total Other Objects \$5,387.00**

**Total 3000 Operation of Non-Instructional Services \$2,709,968.00**

LEA : 124151902 Coatesville Area SD

Printed 12/20/2022 12:09:10 PM

**Food Service / Cafeteria Operations Fund (51)**

	<u>Elementary</u>	<u>Secondary</u>	<u>Federal</u>	<u>Total</u>
<b>3100 Food Services</b>				
<b>100 Personnel Services – Salaries</b>				
100 Personnel Services – Salaries				871,779.00
<b>Total Personnel Services – Salaries</b>				<b>\$871,779.00</b>
<b>200 Personnel Services – Employee Benefits</b>				
210 Group Insurance – Contracted Provider				1,456.00
220 Social Security Contributions				65,961.00
230 PSERS Retirement Contributions				(35,741.00)
250 Unemployment Compensation				3,497.00
260 Workers' Compensation				3,638.00
270 Group Insurance – Self-Insurance				121,315.00
280 Other Post-Employment Benefits (OPEB)				4,978.00
292 Health Savings Accounts				3,900.00
<b>Total Personnel Services – Employee Benefits</b>				<b>\$169,004.00</b>
<b>300 Purchased Professional and Technical Services</b>				
340 Technical Services				9,905.00
390 Other Purchased Professional and Technical Services				200.00
<b>Total Purchased Professional and Technical Services</b>				<b>\$10,105.00</b>
<b>400 Purchased Property Services</b>				
430 Repairs and Maintenance Services				12,004.00
440 Rentals				1,350.00
490 Other Purchased Property Services				1,800.00
<b>Total Purchased Property Services</b>				<b>\$15,154.00</b>
<b>500 Other Purchased Services</b>				
580 Travel				671.00
<b>Total Other Purchased Services</b>				<b>\$671.00</b>
<b>600 Supplies</b>				
610 General Supplies				112,125.00
620 Energy				2,503.00
630 Food				1,513,871.00
650 Supplies & Fees – Technology Related				495.00
<b>Total Supplies</b>				<b>\$1,628,994.00</b>
<b>700 Property</b>				
740 Depreciation				8,874.00
<b>Total Property</b>				<b>\$8,874.00</b>
<b>800 Other Objects</b>				
810 Dues and Fees				5,387.00
<b>Total Other Objects</b>				<b>\$5,387.00</b>
<b>Total 3100 Food Services</b>				<b>\$2,709,968.00</b>

	<u>Food Service(51)</u>	<u>Child Care Operations(52)</u>	<u>Other Enterprise(58)</u>	<u>Internal Service(60)</u>	<u>Total</u>
<b>3000 <u>Operation of Non-Instructional Services</u></b>					
3100 Food Services	2,709,968.00				2,709,968.00
<b>Total Operation of Non-Instructional Services</b>	<b>\$2,709,968.00</b>				<b>\$2,709,968.00</b>
<b>TOTAL ACTUAL EXPENDITURES &amp; OTHER FINANCING USES</b>	<b>\$2,709,968.00</b>				<b>\$2,709,968.00</b>

LEA : 124151902 Coatesville Area SD

Printed 12/20/2022 12:09:21 PM

Fund	School	School Number	Local Personnel	Local Nonpersonnel	State Personnel	State Nonpersonnel	Federal Personnel	Federal Nonpersonnel	Total	Explanation
10										
	Caln El Sch	1376	2,997,945.00	1,394,735.00	1,500,448.00	597,533.00	358,991.00	208,728.00	7,058,380.00	
	Coatesville Area SD Cyber Academy	8415	226,953.00	874,641.00	97,111.00	374,703.00	781,787.00	528,488.00	2,883,683.00	
	Coatesville Area SHS	5012	10,187,083.00	4,448,433.00	4,365,209.00	1,901,703.00	346,845.00	613,244.00	21,862,517.00	
	Coatesville Intermediate HS	8416	6,576,093.00	2,999,017.00	2,817,855.00	1,284,857.00	152,111.00	430,281.00	14,260,214.00	
	East Fallowfield El Sch	1374	2,456,528.00	1,211,386.00	1,276,104.00	518,984.00	261,667.00	175,575.00	5,900,244.00	
	Kings Highway El Sch	1375	3,152,927.00	1,641,252.00	1,706,486.00	703,141.00	551,079.00	241,646.00	7,996,531.00	
	North Brandywine MS	8467	4,232,670.00	1,339,817.00	1,813,791.00	574,013.00	216,482.00	238,754.00	8,415,527.00	
	Rainbow El Sch	1370	4,999,170.00	2,402,181.00	2,738,774.00	1,029,143.00	301,369.00	367,644.00	11,838,281.00	
	Reeceville El Sch	7334	2,817,394.00	1,197,092.00	1,419,675.00	512,861.00	231,697.00	189,501.00	6,368,220.00	
	Scott MS	7767	3,884,342.00	1,349,993.00	1,664,515.00	578,380.00	341,189.00	174,795.00	7,993,214.00	
<b>Total</b>			<b>41,531,105.00</b>	<b>18,858,547.00</b>	<b>19,399,968.00</b>	<b>8,075,318.00</b>	<b>3,543,217.00</b>	<b>3,168,656.00</b>	<b>94,576,811.00</b>	