

LEA Name : Coatesville Area SD
Address : 3030 CG Zinn Rd
Thorndale, PA 19372

County : Chester
AUN Number : 124151902
LEA Type : SD

Annual Financial Report Accuracy Certification Statement

For Fiscal Year Ending
6/30/2016

Pennsylvania Department of Education
&
Office of Comptroller Operations

PDE-2056: Intermediate Unit
PDE-2057: School District, AVTS/CTC, Charter School,
and Special Program Jointure

CERTIFICATION: By signing this page I agree that the electronic data submitted is a complete and accurate statement of the financial operations and status of the local education agency for the fiscal year. It has been prepared in accordance with generally accepted accounting principles and established Commonwealth of PA reporting guidelines.

W. Kelly Dore _____
Chief School Administrator Signature

Karen M. Hall _____
Board Secretary Signature

_____ Date 12/18/17

_____ Date 12-18-17

Ronald Kabonick
Contact Person
kabonickr@casdschools.org
Contact Person E-mail Address

(610)466-2403 Ext :
Contact Person Telephone Number

Contact Person Fax Number

THIS IS TRUE AND CORRECT TO THE BEST OF MY KNOWLEDGE. CD

Audit Certification

Annual Financial Report:

For Fiscal Year Ending 6/30/2016

(Pursuant to PA School Code Section 218(b))

Audit Certification Due:
12/31/2016

LEA Name : Coatesville Area SD
AUN Number : 12451902
County : Chester

This certification is applicable to:

- Orig. Annual Financial Report submitted to Comptroller Operations:** 11/14/2016
Date
- Annual Financial Report revisions submitted on:** _____
Date

Auditing Firm: MALLEN LLP
P.O. Box 680
CHES, PA, 19456-0680

Auditor Contact Name: JEFF MINTZ
Auditor Phone: 610-935-1420
Auditor E-mail: JMINTZ@MALLEN.COM

CERTIFICATION: By signing this page I agree that the financial statements of the school have been properly audited as noted above pursuant to Article XXIV, and in the auditor's professional opinion, the Annual Financial Report (PDE-2057) submitted on the date referenced is materially consistent with the audited financial statements.

Chief School Administrator

Signature [Signature] Date 02/06/2017

Board Secretary

Signature [Signature] Date 02/06/2017

Contact Person Ronald Kabonick

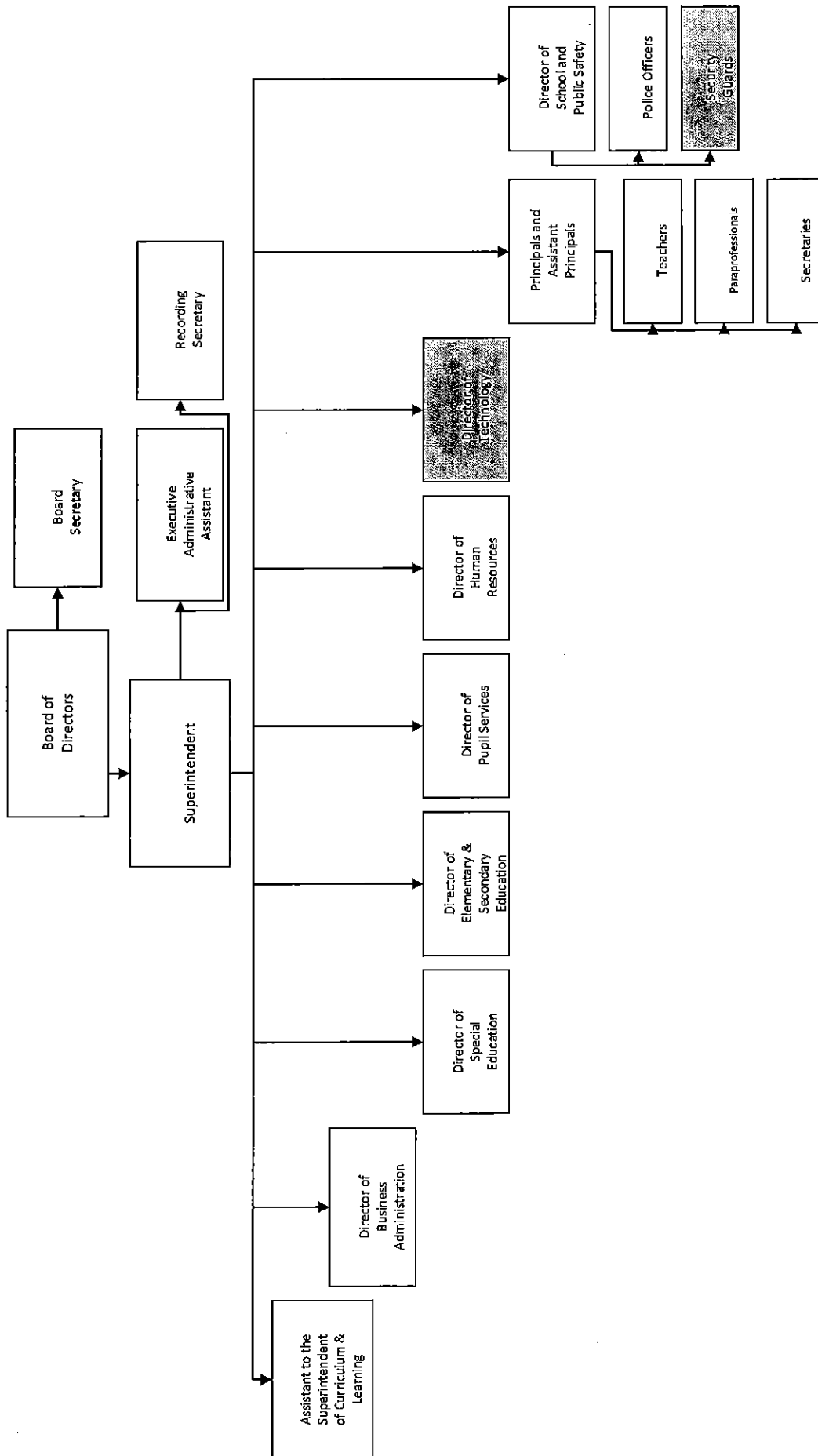
(610)466-2403 EXT: _____

Contact Person _____

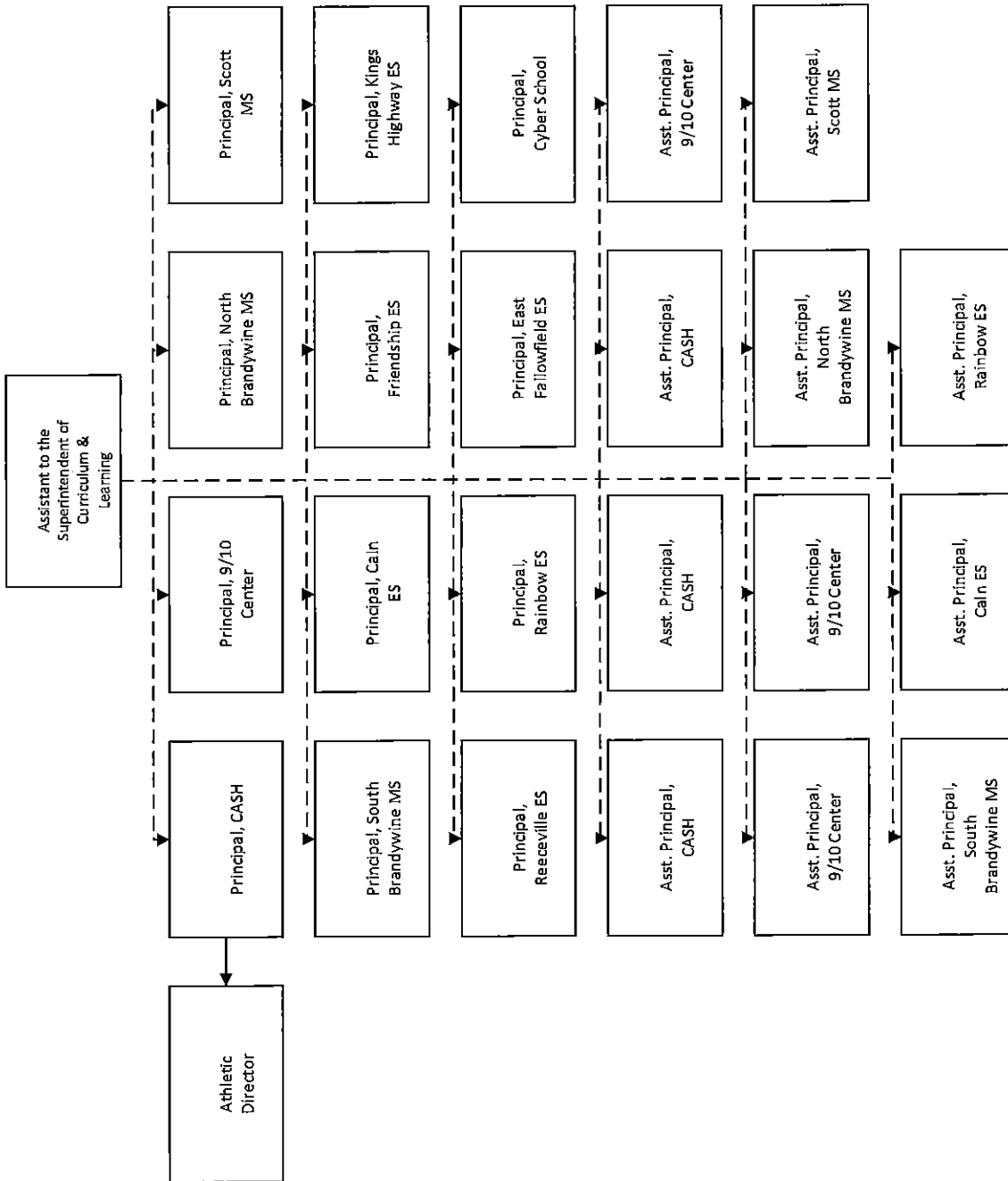
Contact Person Telephone Number _____

Contact Person E-mail Address kabonickr@casdschools.org

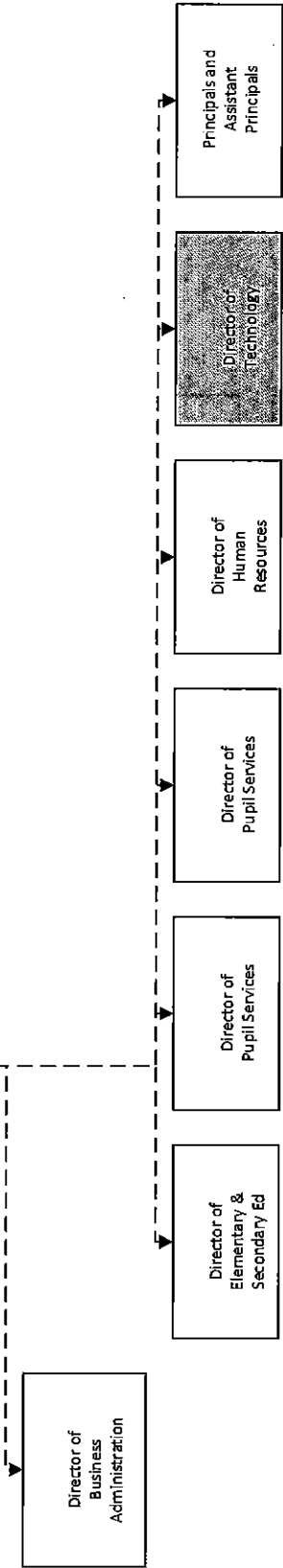
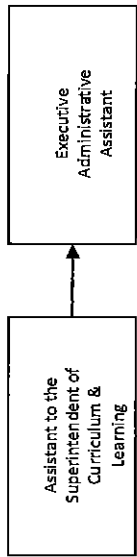
Contact Person Fax Number _____



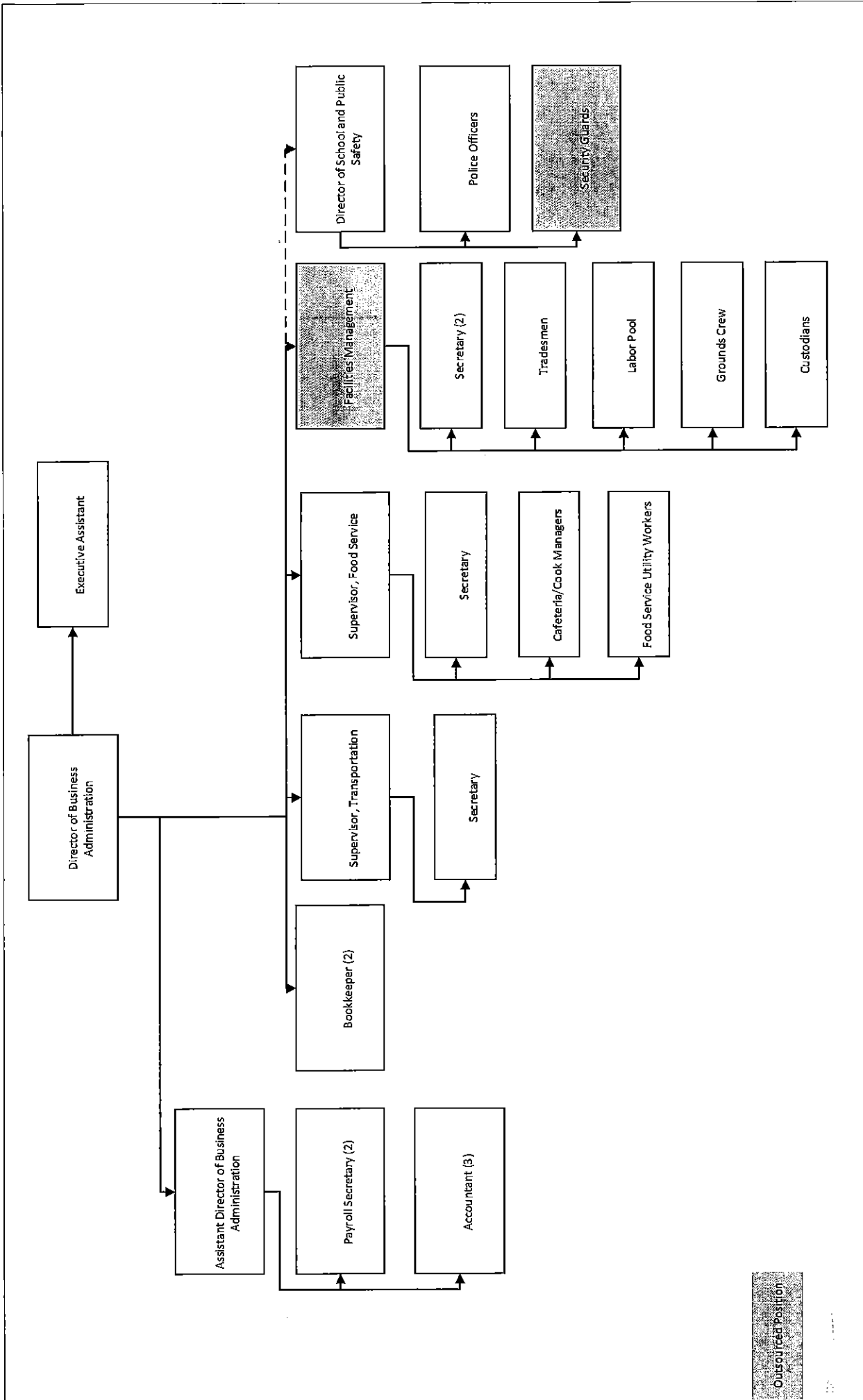
Outsourced Position



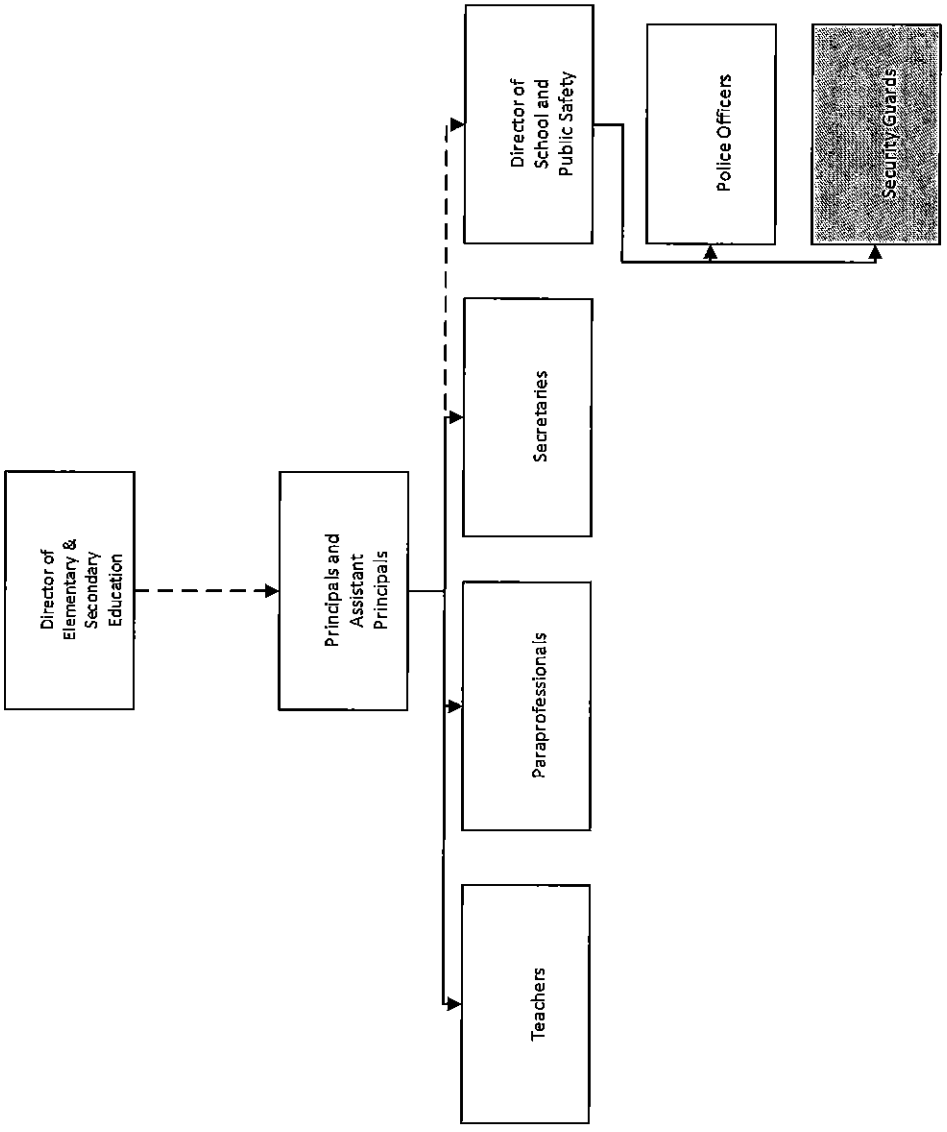
Unfilled Position



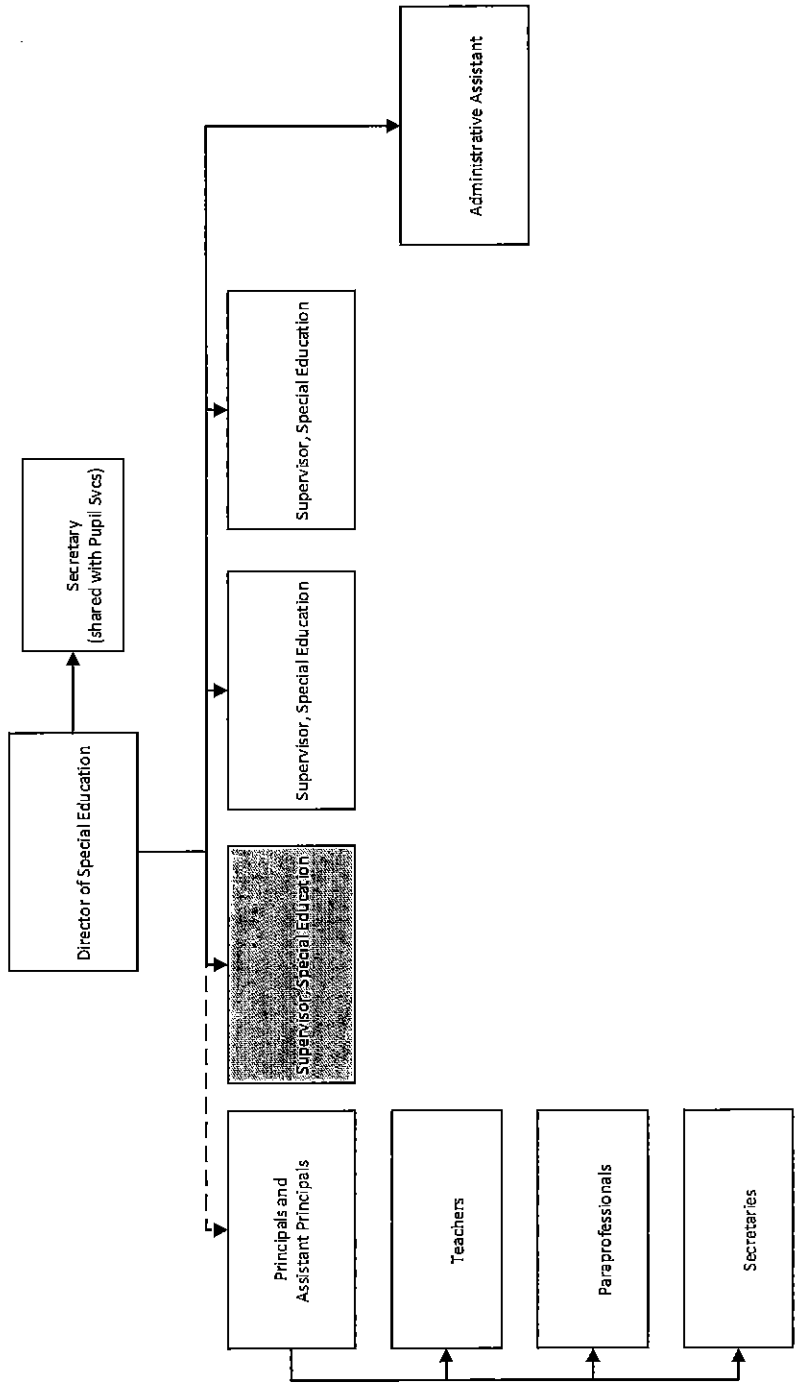
OUTSOURCED POSITION



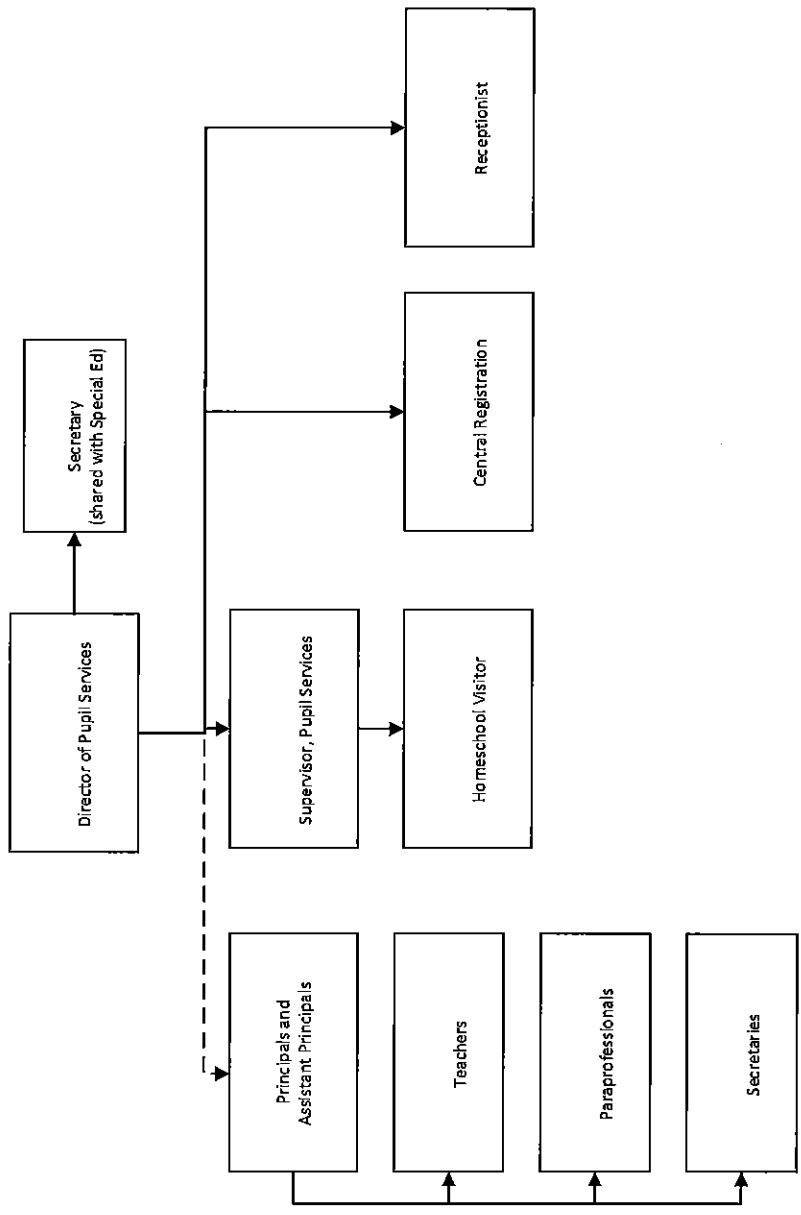
Outsourced Position

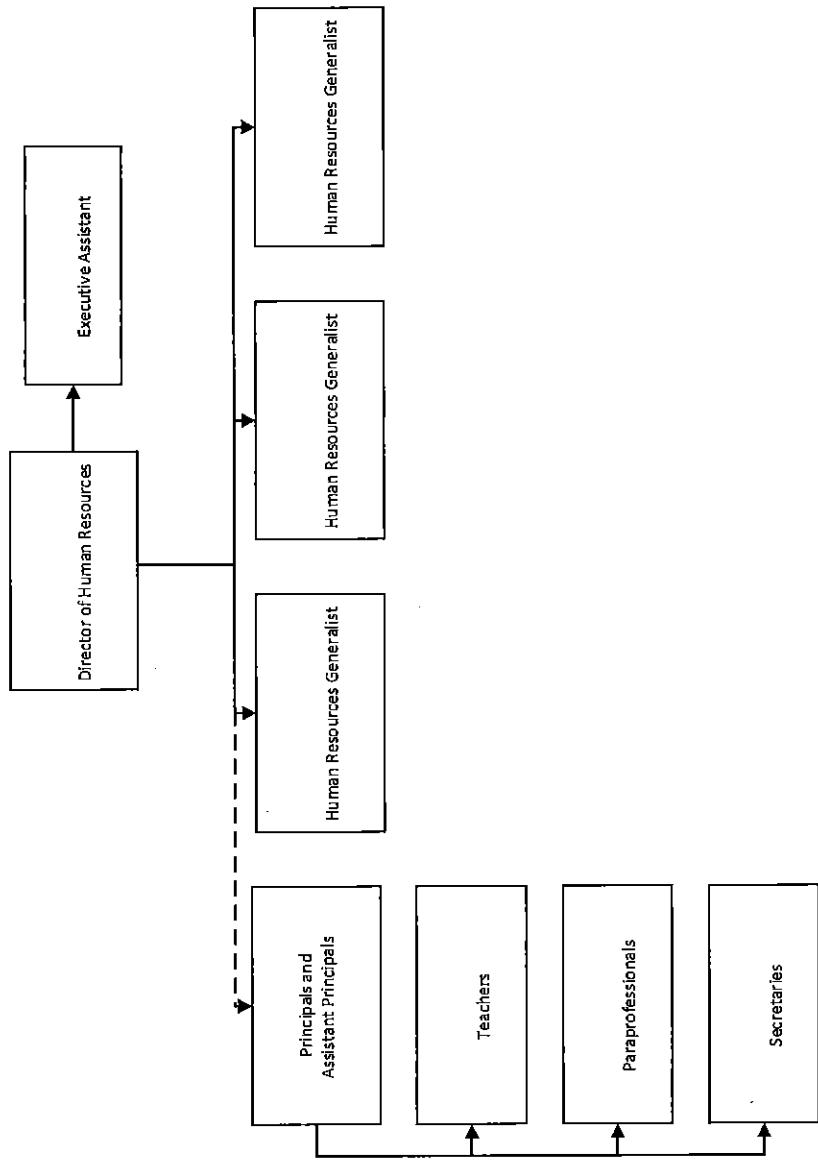


Outsourced position

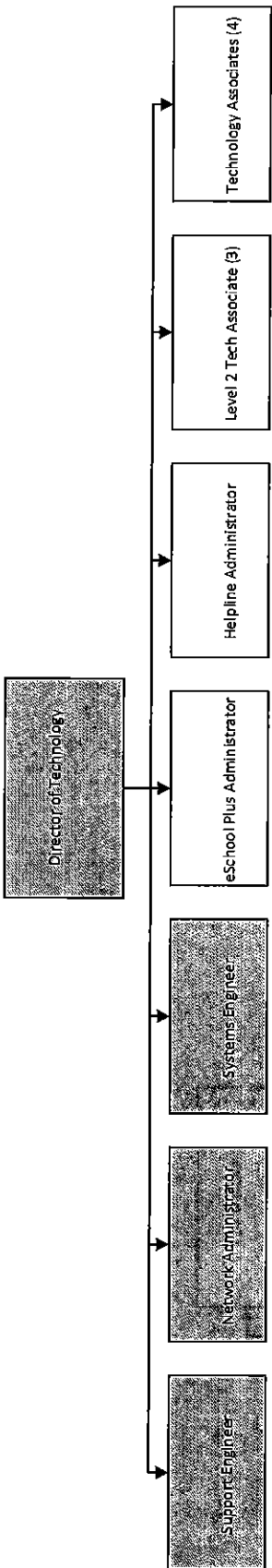


Outsourced Position





Outsourced Position



Outsourced Position

<u>Val Number</u>	<u>Description</u>	<u>Justification</u>
16015	<p>REP Fund 51: Object 300 is greater than object 500. Purchased services for food service contracted services should be coded to objects 571 and 572. Correct or enter a justification.</p> <p>REP Fund 51 Object 300: \$8,550.00 REP Fund 51 Object 500: \$1,488.00</p>	<p>Food Service Directors secretary position is temporarily being filled by a Temp Employment Agency.</p>
50470	<p>SESS - 2440 Nursing Services: SESS Schedule amounts for Special Education vary from prior year by 40% or more. Correct the data or enter a justification.</p> <p>SESS Schedule 2440: \$0.00 Prior Year SESS Schedule 2440: \$1,126.70</p>	<p>Discontinued Services.</p>

Amounts Expressed in Whole Dollars	<u>General Fund</u> <u>(10)</u>	<u>Public Purpose Trust</u> <u>(27)</u>	<u>Other Compt Approved</u> <u>(28)</u>	<u>Athletic / Activity</u> <u>(29)</u>	<u>Capital Reserve (690.</u> <u>1850)</u> <u>(31)</u>
Assets And Deferred Outflows Of Resources					
Assets					
0100 Cash and Cash Equivalents	19,879,880				
0110 Investments					
0120 Taxes Receivable	6,148,406				
0130 Due From Other Funds	1,202,899				
0141 Due From Other Governments					
0142 State Revenue Receivable	8,223,719				
0143 Federal Revenue Receivable	1,195,591				
0145 Other Intergovernmental Revenue Receivable					
0146 Due from Primary Government					
0147 Due from Component Unit					
0150 Other Receivables	871,291				
0170 Inventories					
0180 Prepaid Expenses (Expenditures)	100				
0190 Other Current Assets					
Total Assets	\$37,521,886				
0910 Deferred Outflows of Resources					
Total Assets And Deferred Outflows Of Resources	\$37,521,886				

Amounts Expressed in Whole Dollars	<u>Capital Reserve (1431)</u> <u>(32)</u>	<u>Other Capital Projects</u> <u>Fund</u> <u>(39)</u>	<u>Debt Service</u> <u>(40)</u>	<u>Permanent</u> <u>(90)</u>	<u>Total Governmental</u> <u>Funds</u>
Assets And Deferred Outflows Of Resources					
Assets					
0100 Cash and Cash Equivalents	90,341	7,225,712			27,195,933
0110 Investments					
0120 Taxes Receivable					6,148,406
0130 Due From Other Funds					1,202,899
0141 Due From Other Governments					
0142 State Revenue Receivable					8,223,719
0143 Federal Revenue Receivable					1,195,591
0145 Other Intergovernmental Revenue Receivable					
0146 Due from Primary Government					
0147 Due from Component Unit					
0150 Other Receivables		29,361			900,652
0170 Inventories					
0180 Prepaid Expenses (Expenditures)					100
0190 Other Current Assets					
Total Assets	\$90,341	\$7,255,073			\$44,867,300
0910 Deferred Outflows of Resources					
Total Assets And Deferred Outflows Of Resources	\$90,341	\$7,255,073			\$44,867,300

Amounts Expressed in Whole Dollars

<u>General Fund</u>	<u>Public Purpose Trust</u>	<u>Other Compt Approved</u>	<u>Athletic / Activity</u>	<u>Capital Reserve (690.</u>
<u>(10)</u>	<u>(27)</u>	<u>(28)</u>	<u>(29)</u>	<u>1850)</u>
				<u>(31)</u>

Liabilities And Deferred Inflows Of Resources And Fund Balances

Liabilities

0400 Due to Other Funds	
0411 Due to Other Governments	
0412 Due to Primary Government	
0413 Due to Component Unit	
0420 Accounts Payable	9,100,095
0430 Contracts Payable	
0440 Current Portion of Long-Term Debt	
0450 Short-Term Payables	
0461 Accrued Salaries and Benefits	
0462 Payroll Deductions and Withholding	10,462,802
0480 Unearned Revenues	5,966,730
0490 Other Current Liabilities	

Total Liabilities	\$25,529,627
--------------------------	---------------------

0950 Deferred Inflows of Resources

Fund Balances

0810 Nonspendable Fund Balance	
0820 Restricted Fund Balance	
0830 Committed Fund Balance	
0840 Assigned Fund Balance	
0850 Unassigned Fund Balance	11,992,259

Total Fund Balances	\$11,992,259
----------------------------	---------------------

Total Liabilities, Deferred Inflows Of Resources And Fund Balances	\$37,521,886
---	---------------------

Amounts Expressed in Whole Dollars

	<u>Capital Reserve (1431)</u> <u>(32)</u>	<u>Other Capital Projects</u> <u>Fund</u> <u>(39)</u>	<u>Debt Service</u> <u>(40)</u>	<u>Permanent</u> <u>(90)</u>	<u>Total Governmental</u> <u>Funds</u>
Liabilities And Deferred Inflows Of Resources And Fund Balances					
Liabilities					
0400 Due to Other Funds					
0411 Due to Other Governments					
0412 Due to Primary Government					
0413 Due to Component Unit					
0420 Accounts Payable		23,449			9,123,544
0430 Contracts Payable					
0440 Current Portion of Long-Term Debt					
0450 Short-Term Payables					
0461 Accrued Salaries and Benefits					
0462 Payroll Deductions and Withholding					10,462,802
0480 Unearned Revenues					5,966,730
0490 Other Current Liabilities					
Total Liabilities		\$23,449			\$25,553,076
0950 Deferred Inflows of Resources					
Fund Balances					
0810 Nonspendable Fund Balance	90,341				90,341
0820 Restricted Fund Balance					
0830 Committed Fund Balance		7,231,624			7,231,624
0840 Assigned Fund Balance					
0850 Unassigned Fund Balance					11,992,259
Total Fund Balances	\$90,341	\$7,231,624			\$19,314,224
Total Liabilities, Deferred Inflows Of Resources And Fund Balances	\$90,341	\$7,255,073			\$44,867,300

Amounts Expressed in Whole Dollars	<u>General Fund</u> <u>(10)</u>	<u>Public Purpose Trust</u> <u>(27)</u>	<u>Other Compt Approved</u> <u>(28)</u>	<u>Athletic / Activity</u> <u>(29)</u>	<u>Capital Reserve (690.</u> <u>1850)</u> <u>(31)</u>
Revenues					
6000 Revenue from Local Sources	103,455,486				
7000 Revenue from State Sources	53,696,864				
8000 Revenue from Federal Sources	2,300,452				
Total Revenues	\$159,452,802				
Expenditures					
1000 Instruction	104,603,633				
2000 Support Services	37,801,277				
3000 Operation of Non-Instructional Services	1,128,909				
4000 Facilities Acquisition, Construction and Improvement Services					
5110 Debt Service	15,149,622				
5130 Refund of Prior Year Revenues / Receipts	103				
5140 Short-Term Borrowing – Interest and Costs					
Total Expenditures	\$158,683,544				
Excess (Deficiency) Of Revenues Over Expenditures	\$769,258				
Other Financing Sources (Uses)					
9110 Face Value of Bonds Issued					
9120 Proceeds from Refunding of Bonds					
9130 Bond Premiums					
9200 Proceeds from Extended-Term Financing					
9300 Interfund Transfers - IN					
9400 Sale of or Compensation for Loss of Fixed Assets					
9710 Transfers from Component Units					
9720 Transfers from Primary Governments					
9910 Other Financing Sources Not Listed in the 9000 Series					
9990 Insurance Recoveries					
5120 Debt Service – Refunded Bonds					
5150 Bond Discounts					
5200 Interfund Transfers – Out					
5300 Transfers Out to Component Units/Primary Governments					
Total Other Financing Sources (Uses)					

Amounts Expressed in Whole Dollars	<u>Capital Reserve (1431)</u> <u>(32)</u>	<u>Other Capital Projects</u> <u>Fund</u> <u>(39)</u>	<u>Debt Service</u> <u>(40)</u>	<u>Permanent</u> <u>(90)</u>	<u>Total Governmental</u> <u>Funds</u>
Revenues					
6000 Revenue from Local Sources	112	11,929			103,467,527
7000 Revenue from State Sources					53,696,864
8000 Revenue from Federal Sources					2,300,452
Total Revenues	\$112	\$11,929			\$159,464,843
Expenditures					
1000 Instruction					104,603,633
2000 Support Services		76			37,801,353
3000 Operation of Non-Instructional Services					1,128,909
4000 Facilities Acquisition, Construction and Improvement Services		1,224,197			1,224,197
5110 Debt Service					15,149,622
5130 Refund of Prior Year Revenues / Receipts					103
5140 Short-Term Borrowing – Interest and Costs					
Total Expenditures		\$1,224,273			\$159,907,817
Excess (Deficiency) Of Revenues Over Expenditures	\$112	(\$1,212,344)			(\$442,974)
Other Financing Sources (Uses)					
9110 Face Value of Bonds Issued					
9120 Proceeds from Refunding of Bonds					
9130 Bond Premiums					
9200 Proceeds from Extended-Term Financing					
9300 Interfund Transfers - IN					
9400 Sale of or Compensation for Loss of Fixed Assets					
9710 Transfers from Component Units					
9720 Transfers from Primary Governments					
9910 Other Financing Sources Not Listed in the 9000 Series					
9990 Insurance Recoveries					
5120 Debt Service – Refunded Bonds					
5150 Bond Discounts					
5200 Interfund Transfers – Out					
5300 Transfers Out to Component Units/Primary Governments					
Total Other Financing Sources (Uses)					

Amounts Expressed in Whole Dollars	<u>General Fund</u> <u>(10)</u>	<u>Public Purpose Trust</u> <u>(27)</u>	<u>Other Compt Approved</u> <u>(28)</u>	<u>Athletic / Activity</u> <u>(29)</u>	<u>Capital Reserve</u> <u>(690.</u> <u>1850)</u> <u>(31)</u>
Special And Extraordinary Items					
9920 Special Items – Gains					
9930 Extraordinary Items – Gains					
5520 Special Items – Losses					
5530 Extraordinary Items – Losses					
Net Change In Fund Balances	\$769,258				
Fund Balance					
0001 Fund Balance - Beginning of Fiscal Year	11,223,004				
Fund Balance - End Of Year	\$11,992,262				

Amounts Expressed in Whole Dollars	<u>Capital Reserve (1431)</u> <u>(32)</u>	<u>Other Capital Projects</u> <u>Fund</u> <u>(39)</u>	<u>Debt Service</u> <u>(40)</u>	<u>Permanent</u> <u>(90)</u>	<u>Total Governmental</u> <u>Funds</u>
Special And Extraordinary Items					
9920 Special Items – Gains					
9930 Extraordinary Items – Gains					
5520 Special Items – Losses					
5530 Extraordinary Items – Losses					
Net Change In Fund Balances	\$112	(\$1,212,344)			(\$442,974)
Fund Balance					
0001 Fund Balance - Beginning of Fiscal Year	90,229	8,443,968			19,757,201
Fund Balance - End Of Year	\$90,341	\$7,231,624			\$19,314,227

Amounts Expressed in Whole Dollars	<u>Food Service</u> <u>(51)</u>	<u>Child Care</u> <u>Operations</u> <u>(52)</u>	<u>Other Enterprise</u> <u>(58)</u>	<u>TOTAL</u>	<u>Internal Service</u> <u>(60)</u>
Assets And Deferred Outflows Of Resources					
Current Assets					
0100 Cash and Cash Equivalents	1,930,984			1,930,984	
0110 Investments					
0130 Due From Other Funds					
0141 Due From Other Governments					
0142 State Revenue Receivable	3,238			3,238	
0143 Federal Revenue Receivable	66,404			66,404	
0146 Due from Primary Government					
0147 Due from Component Unit					
0150 Other Receivables	11,330			11,330	
0170 Inventories	26,290			26,290	
0180 Prepaid Expenses (Expenditures)					
0190 Other Current Assets					
Total Current Assets	\$2,038,246			\$2,038,246	
Noncurrent Assets					
0211 Land					
0212 Site Improvements (Net)					
0220 Buildings and Building Improvements (Net)					
0230 Machinery, Equipment and Furniture (Net)	94,083			94,083	
0250 Construction in Progress					
0260 Long Term Prepayments					
0290 Other Noncurrent Assets					
Total Noncurrent Assets	\$94,083			\$94,083	
0910 Deferred Outflows of Resources	269,000			269,000	
Total Assets And Deferred Outflows Of Resources	\$2,401,329			\$2,401,329	

Amounts Expressed in Whole Dollars	<u>Food Service</u> <u>(51)</u>	<u>Child Care</u> <u>Operations</u> <u>(52)</u>	<u>Other Enterprise</u> <u>(58)</u>	<u>TOTAL</u>	<u>Internal Service</u> <u>(60)</u>
Liabilities And Deferred Inflows Of Resources And Net Position					
Current Liabilities					
0400 Due to Other Funds	1,202,899			1,202,899	
0411 Due to Other Governments					
0413 Due to Component Unit					
0420 Accounts Payable	8,395			8,395	
0430 Contracts Payable					
0440 Current Portion of Long-Term Debt					
0450 Short-Term Payables					
0461 Accrued Salaries and Benefits	11,953			11,953	
0462 Payroll Deductions and Withholding	570,623			570,623	
0480 Unearned Revenues					
0490 Other Current Liabilities					
Total Current Liabilities	\$1,793,870			\$1,793,870	
Noncurrent Liabilities					
0510 Bonds Payable					
0520 Extended-Term Financing Agreements Payable					
0530 Lease-Purchase Obligations					
0540 Accumulated Compensated Absences	20,018			20,018	
0550 Authority Lease Obligations					
0560 Other Post-Employment Benefits (OPEB)	85,694			85,694	
0570 Net Pension Liability	3,104,000			3,104,000	
0599 Other Noncurrent Liabilities					
Total Noncurrent Liabilities	\$3,209,712			\$3,209,712	
Total Liabilities	\$5,003,582			\$5,003,582	
0950 Deferred Inflows of Resources	21,000			21,000	
Net Position					
0791 Net Investment in Capital Assets	94,083			94,083	
0008 Restricted Net Position (0792 – 0798)					
0799 Unrestricted Net Position	(2,717,336)			(2,717,336)	
Total Net Position	(\$2,623,253)			(\$2,623,253)	
Total Liabilities And Deferred Inflows Of Resources And Net Position	\$2,401,329			\$2,401,329	

Amounts Expressed in Whole Dollars	<u>Food Service</u> <u>(51)</u>	<u>Child Care Operations</u> <u>(52)</u>	<u>Other Enterprise</u> <u>(58)</u>	<u>TOTAL</u>	<u>Internal Service</u> <u>(60)</u>
Operating Revenues					
6600 Food Service Revenue	508,915			508,915	
0071 Charges for Services	103,747			103,747	
0072 Other Operating Revenue					
Total Operating Revenues	\$612,662			\$612,662	
Operating Expenses					
100 Personnel Services – Salaries	837,954			837,954	
200 Personnel Services – Employee Benefits	630,661			630,661	
300 Purchased Professional and Technical Services	8,550			8,550	
400 Purchased Property Services	9,565			9,565	
500 Other Purchased Services	1,488			1,488	
600 Supplies	1,510,953			1,510,953	
740 Depreciation					
810 Dues and Fees					
890 Miscellaneous Expenditures	631			631	
Total Operating Expenses	\$2,999,802			\$2,999,802	
Operating Income (Loss)	(\$2,387,140)			(\$2,387,140)	
Non Operating Revenues (Expenses)					
6500 Earnings on Investments	2,646			2,646	
6920 Contributions and Donations from Private Sources					
6930 Gains or Losses on Sale of Fixed Assets					
6991 Refunds of a Prior Year Expenditure					
7000 Revenue from State Sources	109,552			109,552	
8000 Revenue from Federal Sources	2,330,070			2,330,070	
820 Claims and Judgments Against the LEA					
830 Interest					
TOTAL Non Operating Revenues (Expenses)	\$2,442,268			\$2,442,268	
Income (Loss) Before Contributions And Transfers	\$55,128			\$55,128	

Amounts Expressed in Whole Dollars	<u>Food Service</u> <u>(51)</u>	<u>Child Care Operations</u> <u>(52)</u>	<u>Other Enterprise</u> <u>(58)</u>	<u>TOTAL</u>	<u>Internal Service</u> <u>(60)</u>
Contributions, Transfers, and Special and Extraordinary Items					
5200 Interfund Transfers – Out					
5300 Transfers Out to Component Units/Primary Governments					
5520 Special Items – Losses					
5530 Extraordinary Items – Losses					
9300 Interfund Transfers - IN					
9500 Capital Contributions					
9700 Transfers IN From Component Units/Primary Governments					
9920 Special Items – Gains					
9930 Extraordinary Items – Gains					
Change In Net Position	\$55,128			\$55,128	
0002 Net Position - Beginning of Fiscal Year	(2,678,381)			(2,678,381)	
0003 Accounting Changes / Residual Equity Transfers					
Net Position - End Of Year	(\$2,623,253)			(\$2,623,253)	

Amounts Expressed in Whole Dollars	<u>Food Service</u> <u>(51)</u>	<u>Child Care Operations</u> <u>(52)</u>	<u>Other Enterprise</u> <u>(58)</u>	<u>TOTAL</u>	<u>Internal Service(60)</u>
Cash Flows From Operating Activities					
0011 Cash Receipts From Users	609,850			609,850	
0012 Cash Receipts From Assessments Made to Other Funds					
0013 Cash Receipts From Earnings on Investments					
0014 Cash Receipts From Other Operating Revenue					
0015 Cash Payments To Employees For Services	1,512,706			1,512,706	
0016 Cash Payments For Insurance Claims					
0017 Cash Payments To Suppliers For Goods and Services	1,200,601			1,200,601	
0018 Cash Payments For Other Operating Expenses					
Net Cash Provided By (Used For) Operating Activities	(\$2,103,457)			(\$2,103,457)	
Cash Flows From Non-Capital Financing Activities					
0021 Receipts From Local Sources - 6000					
0022 Receipts From State Sources - 7000	110,774			110,774	
0023 Receipts From Federal Sources -8000	2,338,862			2,338,862	
0024 Notes and Loans Received (Repaid)					
0025 Interest Paid on Notes/Loans - 5100-830					
0026 Operating Transfers In (Out)/Residual Equity Trans					
0027 Operating Transfers In (Out) Primary Government / Comp Unit	(243,040)			(243,040)	
0028 Receipts From Refund of Prior Year Expenditures - 6991					
0029 Special and Extraordinary Gains (losses)					
Net Cash Prov By (Used for) Non-Capital Financing Activities	\$2,206,596			\$2,206,596	
Cash Flows From Capital and Related Financing Activities					
0031 Payments For Fac Acq, Const, and Imp - 4000					
0032 Gain / (Loss) on Sale of Fixed Assets - 6930					
0033 Proceeds From Extended Term Financing - 9200					
0034 Principal Paid on Financing Agreements					
0035 Interest Paid on Financing Agreements - 5100-830					
0036 (Inc) Dec in Contributed Capital					
Net Cash Prov By (Used for) Capital and Related Financing Activities					
Cash Flows From Investing Activities					
0041 Earnings on Investments - 6500	2,646			2,646	
0042 Purchase of Inv Securities / Deposits to Inv Pools					
0043 Receipts From Investment Pool Withdrawals					
0044 Proceeds from Sale and Maturity of Inv Securities					
0045 Loans Received (Paid)					
Net Cash Prov By (Used for) Investing Activities	\$2,646			\$2,646	

	<u>Food Service</u> <u>(51)</u>	<u>Child Care Operations</u> <u>(52)</u>	<u>Other Enterprise</u> <u>(58)</u>	<u>TOTAL</u>	<u>Internal Service</u> <u>(60)</u>
Net Increase (Decrease) in Cash Flows	105,785			105,785	
0004 Cash and Cash Equivalents Beginning of Year	1,825,199			1,825,199	
Cash and Cash Equivalents at Year End	\$1,930,984			\$1,930,984	

Reconciliation of Operating Income (Loss) To Net Cash Provided by (Used For) Operating Activities

0005 Operating Income (Loss) per REP	(2,387,140)			(2,387,140)	
Adjustments					
0051 Depreciation and Net Amortization					
0052 Provision for Uncollectible Accounts					
0053 Other Adjustments					
Effect of Changes in Assets, Liabilities, Deferred Outflows and Deferred Inflows					
0054 (Inc) Dec In Accounts Receivable (0120-0150)	(2,812)			(2,812)	
0055 Advances to Other Funds (0160)					
0056 (Inc) Dec in Inventories (0170)	10,651			10,651	
0057 (Inc) Dec in Prepaid Expenses (0180)					
0058 (Inc) Dec in Other Current or Noncurrent Assets					
0064 Deferred Outflows (0910)					
0059 Inc (Dec) in Accounts Payable (0400-0450)	319,935			319,935	
0060 Inc (Dec) in Accrued Salaries/Benefits (0461)					
0065 Inc (Dec) in Net Pension Liabilities (0570)	52,000			52,000	
0066 Inc (Dec) in Other Postemp Benefit Oblig (0560)	(1,225)			(1,225)	
0061 Inc (Dec) in Payroll Deductions/Withholding (0462)					
0062 Inc (Dec) in Unearned Revenue (0480)					
0063 Inc (Dec) in Other Current or Noncurrent Liabilities	(94,866)			(94,866)	
0067 Deferred Inflows (0950)					
Total Adjustments	\$283,683			\$283,683	
Cash Provided By (Used for) Total	(\$2,103,457)			(\$2,103,457)	

COMBINED STATEMENT OF CASH FLOWS
SCHEDULE OF NONCASH INVESTING, CAPITAL, AND FINANCING ACTIVITIES

Explanation of Transaction and Balance Sheet Effect	Amount
Total	

LEA : 124151902 Coatesville Area SD

Printed 2/9/2018 1:26:16 PM

Amounts Expressed in Whole Dollars	<u>Private Purpose Trust</u> <u>(71)</u>	<u>Investment Trust</u> <u>(72)</u>	<u>Pension Trust</u> <u>(73)</u>	<u>Activity</u> <u>(81)</u>
Assets And Deferred Outflows Of Resources				
Assets				
0100 Cash and Cash Equivalents	137,819			87,319
0110 Investments	13,793			
0130 Due From Other Funds	47,645			
0147 Due from Component Unit				
0150 Other Receivables				
0170 Inventories				
0180 Prepaid Expenses (Expenditures)				
0190 Other Current Assets				
0220 Buildings and Building Improvements (Net)				
0230 Machinery, Equipment and Furniture (Net)				
Total Assets	\$199,257			\$87,319
0910 Deferred Outflows of Resources				
Total Assets And Deferred Outflows Of Resources	\$199,257			\$87,319

LEA : 124151902 Coatesville Area SD

Printed 2/9/2018 1:26:16 PM

Amounts Expressed in Whole Dollars

	<u>Other Agency</u> <u>(89)</u>	<u>Discrete Component Units</u> <u>(98)</u>	<u>Discrete Component Units</u> <u>(99)</u>	<u>Total Fiduciary Funds</u>
Assets And Deferred Outflows Of Resources				
Assets				
0100 Cash and Cash Equivalents		197,921		423,059
0110 Investments				13,793
0130 Due From Other Funds				47,645
0147 Due from Component Unit				
0150 Other Receivables				
0170 Inventories				
0180 Prepaid Expenses (Expenditures)				
0190 Other Current Assets				
0220 Buildings and Building Improvements (Net)				
0230 Machinery, Equipment and Furniture (Net)				
Total Assets		\$197,921		\$484,497
0910 Deferred Outflows of Resources				
Total Assets And Deferred Outflows Of Resources		\$197,921		\$484,497

LEA : 124151902 Coatesville Area SD

Printed 2/9/2018 1:26:16 PM

Amounts Expressed in Whole Dollars	<u>Private Purpose Trust</u> (71)	<u>Investment Trust</u> (72)	<u>Pension Trust</u> (73)	<u>Activity</u> (81)
Liabilities, Deferred Inflows Of Resources And Net Position				
Liabilities				
0400 Due to Other Funds				
0411 Due to Other Governments				
0412 Due to Primary Government				
0413 Due to Component Unit				
0420 Accounts Payable	1,035			3,078
0430 Contracts Payable				
0450 Short-Term Payables				
0461 Accrued Salaries and Benefits				
0462 Payroll Deductions and Withholding				
0480 Unearned Revenues				
0490 Other Current Liabilities				
Total Liabilities	\$1,035			\$3,078
0950 Deferred Inflows of Resources				84,241
Net Position				
0791 Net Investment in Capital Assets				
0009 Restricted Net Position (0792 – 0798)	198,222			
0799 Unrestricted Net Position				
Total Net Position	\$198,222			
Total Liabilities, Deferred Inflows Of Resources And Net Position	\$199,257			\$87,319

LEA : 124151902 Coatesville Area SD

Printed 2/9/2018 1:26:16 PM

Amounts Expressed in Whole Dollars

	<u>Other Agency</u> <u>(89)</u>	<u>Discrete Component Units</u> <u>(98)</u>	<u>Discrete Component Units</u> <u>(99)</u>	<u>Total Fiduciary Funds</u>
Liabilities, Deferred Inflows Of Resources And Net Position				
Liabilities				
0400 Due to Other Funds				
0411 Due to Other Governments				
0412 Due to Primary Government				
0413 Due to Component Unit				
0420 Accounts Payable	47,720			51,833
0430 Contracts Payable				
0450 Short-Term Payables				
0461 Accrued Salaries and Benefits				
0462 Payroll Deductions and Withholding				
0480 Unearned Revenues				
0490 Other Current Liabilities				
Total Liabilities	\$47,720			\$51,833
0950 Deferred Inflows of Resources		150,201		234,442
Net Position				
0791 Net Investment in Capital Assets				
0009 Restricted Net Position (0792 – 0798)				198,222
0799 Unrestricted Net Position				
Total Net Position				\$198,222
Total Liabilities, Deferred Inflows Of Resources And Net Position	\$197,921			\$484,497

Amounts Expressed in Whole Dollars	<u>Private Purpose Trust</u> <u>(71)</u>	<u>Investment Trust</u> <u>(72)</u>	<u>Pension Trust</u> <u>(73)</u>	<u>Discrete Component</u> <u>Units</u> <u>(98)</u>	<u>Discrete Component</u> <u>Units</u> <u>(99)</u>	<u>Total Fiduciary</u> <u>Funds</u>
Additions						
0091 Gifts and Contributions	119,859					119,859
0092 Other Additions						
Deductions						
0093 Scholarships Awarded	89,595					89,595
0094 Other Deductions						
Change In Net Position	\$30,264					\$30,264
0006 Net Position – Beginning of Fiscal Year	167,958					167,958
0007 Net Position Held in Trust for Pension Benefits						
Net Position - End of Fiscal Year	\$198,222					\$198,222

	<u>Revenue Reported In Current Year</u>	<u>Current Year Tax Accrual</u>	<u>Prior Year Tax Accrual</u>	<u>Taxes Collected In Current Year</u>
<u>Revenue from Local Sources</u>				
6111 Current Real Estate Taxes	86,671,881.00			86,671,881.00
6112 Interim Real Estate Taxes	221,553.03			221,553.03
6113 Public Utility Realty Taxes	105,333.28			105,333.28
6143 Current Act 511 Local Services Taxes	83,337.25			83,337.25
6151 Current Act 511 Earned Income Taxes	7,929,872.02			7,929,872.02
6153 Current Act 511 Real Estate Transfer Taxes	1,471,527.75			1,471,527.75
6411 Delinquent Real Estate Taxes	4,592,382.43			4,592,382.43
6500 Earnings on Investments	120,195.37			
6700 Revenues from LEA Activities	82,620.00			
6832 Federal IDEA Revenue Received as Pass Through	1,082,261.90			
6910 Rentals	156,961.74			
6920 Contributions and Donations from Private Sources	12,440.00			
6944 Receipts from Other LEAs in Pennsylvania - Education	331,148.79			
6991 Refunds of a Prior Year Expenditure	373,930.10			
6992 Energy Efficiency Revenues and Incentives	62,165.70			
6999 Other Revenues Not Specified Above	157,875.86			
TOTAL Revenue from Local Sources	\$103,455,486.22			\$101,075,886.76

**Revenue Reported
In Current Year**

Revenue from State Sources

7110 Basic Education Funding	24,003,843.05		
7160 Tuition for Orphans Subsidy	204,616.99		
7271 Special Education funds for School-Aged Pupils	4,842,613.80		
7311 Pupil Transportation Subsidy	4,703,120.81		
7312 Nonpublic and Charter School Pupil Transportation Subsidy	1,070,685.00		
7320 Rental and Sinking Fund Payments / Building Reimbursement Subsidy	5,619,768.79		
7330 Health Services (Medical, Dental, Nurse, Act 25)	127,823.11		
7340 State Property Tax Reduction Allocation	3,917,026.30		
7505 Ready to Learn Block Grant	1,103,925.00		
7599 Other State Revenue Not Listed Elsewhere in the 7000 Series	8,895.00		
7810 State Share of Social Security and Medicare Taxes	1,678,704.76		
7820 State Share of Retirement Contributions	6,415,841.16		
TOTAL Revenue from State Sources	\$53,696,863.77		

**Revenue Reported
In Current Year**

Revenue from Federal Sources

8514 NCLB, Title I - Improving the Academic Achievement of the Disadvantaged	1,508,632.00		
8515 NCLB, Title II - Preparing, Training and Recruiting High Quality Teachers and Principals	664,225.23		
8516 NCLB, Title III - Language Instruction for Limited English Proficient and Immigrant Students	27,199.00		
8690 Other Restricted Federal Grants-in-Aid Through the Commonwealth of PA	24,076.00		
8810 School-Based Access Medicaid Reimbursement Program (SBAP) Reimbursements (Access)	52,564.19		
8820 Medical Assistance Reimbursement for Administrative Claiming (Quarterly) Program	23,755.55		
TOTAL Revenue from Federal Sources	\$2,300,451.97		
TOTAL FROM ALL SOURCES	\$159,452,801.96		\$101,075,886.76

Revenue from Local Sources	103,455,486.22
Revenue from State Sources	53,696,863.77
Revenue from Federal Sources	2,300,451.97
Other Financing Sources	
TOTAL FROM ALL SOURCES	\$159,452,801.96

General Fund (10)

	<u>Total</u>
1000 Instruction	
100 Personnel Services – Salaries	
100 Personnel Services – Salaries	34,818,528.49
Total Personnel Services – Salaries	\$34,818,528.49
200 Personnel Services – Employee Benefits	
220 Social Security Contributions	2,619,589.77
230 PSERS Retirement Contributions	8,978,259.40
240 Tuition Reimbursement	151,518.08
250 Unemployment Compensation	122,193.94
260 Workers’ Compensation	306,132.56
270 Group Insurance – Self-Insurance	9,647,085.43
Total Personnel Services – Employee Benefits	\$21,824,779.18
300 Purchased Professional and Technical Services	
322 Professional Educational Services – Ius	10,387,742.72
323 Professional Educational Services – Other Educational Agencies	1,515,893.91
324 Professional Educational Services – Employee Training and Development Services	110,902.51
329 Professional Educational Services – Other	1,135,523.14
330 Other Professional Services	1,484,053.41
Total Purchased Professional and Technical Services	\$14,634,115.69
400 Purchased Property Services	
430 Repairs and Maintenance Services	7,349.83
440 Rentals	162,581.81
Total Purchased Property Services	\$169,931.64
500 Other Purchased Services	
510 Student Transportation Services	401,293.58
550 Printing and Binding	4,626.02
561 Tuition To Other School Districts Within the State	171,650.73
562 Tuition To Pennsylvania Charter Schools	26,293,521.54
564 Tuition To Career and Technology Centers	2,600,984.00
566 Tuition To Institutions of Higher Education and Technical Institutes	166,328.00
567 Tuition To Approved Private Schools (APS) and PA Chartered Schools for the Deaf and Blind	2,227,436.20
568 Tuition To Private Residential Rehabilitative Institutions (PRRI) [In-State] and Detention Centers	142,281.22
580 Travel	1,491.59
591 Services Purchased Locally	1,597.34
Total Other Purchased Services	\$32,011,210.22
600 Supplies	
610 General Supplies	710,414.09
640 Books and Periodicals	268,783.51
650 Supplies & Fees – Technology Related	43,626.87
Total Supplies	\$1,022,824.47
700 Property	
750 Equipment – Original and Additional	15,623.61
760 Equipment – Replacement	7,224.22
Total Property	\$22,847.83

LEA : 124151902 Coatesville Area SD

Printed 2/9/2018 1:26:19 PM

General Fund (10)

1000 Instruction	<u>Total</u>
800 Other Objects	
810 Dues and Fees	837.50
820 Claims and Judgments Against the LEA	98,558.16
Total Other Objects	\$99,395.66
Total 1000 Instruction	\$104,603,633.18

General Fund (10)

1100 Regular Programs – Elementary / Secondary

	<u>Elementary</u>	<u>Secondary</u>	<u>Federal</u>	<u>Total</u>
100 Personnel Services – Salaries				
100 Personnel Services – Salaries	14,931,907.19	12,973,925.29	720,496.83	28,626,329.31
Total Personnel Services – Salaries	\$14,931,907.19	\$12,973,925.29	\$720,496.83	\$28,626,329.31
200 Personnel Services – Employee Benefits				
220 Social Security Contributions	1,122,390.56	976,672.38	54,323.68	2,153,386.62
230 PSERS Retirement Contributions	3,858,478.34	3,346,710.89	185,748.73	7,390,937.96
240 Tuition Reimbursement	90,078.05	61,440.03		151,518.08
250 Unemployment Compensation	50,189.73	42,310.37	2,888.82	95,388.92
260 Workers' Compensation	131,549.68	114,374.90	6,275.72	252,200.30
270 Group Insurance – Self-Insurance	4,236,099.69	3,464,919.42	200,460.15	7,901,479.26
Total Personnel Services – Employee Benefits	\$9,488,786.05	\$8,006,427.99	\$449,697.10	\$17,944,911.14
300 Purchased Professional and Technical Services				
322 Professional Educational Services – Ius		152,522.42		152,522.42
324 Professional Educational Services – Employee Training and Development Services		5,687.00	80,825.44	86,512.44
329 Professional Educational Services – Other	511,137.71	193,840.27		704,977.98
330 Other Professional Services	837.75	1,662.25		2,500.00
Total Purchased Professional and Technical Services	\$511,975.46	\$353,711.94	\$80,825.44	\$946,512.84
400 Purchased Property Services				
430 Repairs and Maintenance Services	1,438.27	3,485.00		4,923.27
440 Rentals	81,848.67	77,981.54		159,830.21
Total Purchased Property Services	\$83,286.94	\$81,466.54		\$164,753.48
500 Other Purchased Services				
510 Student Transportation Services	4,285.23	5,379.54	373.19	10,037.96
550 Printing and Binding	2,174.35	2,451.67		4,626.02
561 Tuition To Other School Districts Within the State		87,352.64		87,352.64
562 Tuition To Pennsylvania Charter Schools	12,634,895.83	6,055,778.47		18,690,674.30
566 Tuition To Institutions of Higher Education and Technical Institutes		166,328.00		166,328.00
568 Tuition To Private Residential Rehabilitative Institutions (PRRI) [In-State] and Detention Centers		139,662.28		139,662.28
580 Travel	86.90	38.15		125.05
Total Other Purchased Services	\$12,641,442.31	\$6,456,990.75	\$373.19	\$19,098,806.25
600 Supplies				
610 General Supplies	163,041.46	152,500.99	364,911.27	680,453.72
640 Books and Periodicals	41,033.99	22,312.33	200,697.63	264,043.95
650 Supplies & Fees – Technology Related	31.84	34,095.76		34,127.60
Total Supplies	\$204,107.29	\$208,909.08	\$565,608.90	\$978,625.27
700 Property				
750 Equipment – Original and Additional	1,433.83	4,944.97		6,378.80
760 Equipment – Replacement	5,162.90	1,273.08		6,435.98
Total Property	\$6,596.73	\$6,218.05		\$12,814.78
800 Other Objects				
810 Dues and Fees	81.26	161.24		242.50

LEA : 124151902 Coatesville Area SD

Printed 2/9/2018 1:26:19 PM

General Fund (10)

1100 Regular Programs – Elementary / Secondary

	<u>Elementary</u>	<u>Secondary</u>	<u>Federal</u>	<u>Total</u>
Total Other Objects	\$81.26	\$161.24		\$242.50
Total 1100 Regular Programs – Elementary / Secondary	\$37,868,183.23	\$28,087,810.88	\$1,817,001.46	\$67,772,995.57

General Fund (10)

1110 Regular Programs

	<u>Elementary</u>	<u>Secondary</u>	<u>Federal</u>	<u>Total</u>
100 Personnel Services – Salaries				
100 Personnel Services – Salaries	14,931,907.19	12,973,925.29		27,905,832.48
Total Personnel Services – Salaries	\$14,931,907.19	\$12,973,925.29		\$27,905,832.48
200 Personnel Services – Employee Benefits				
220 Social Security Contributions	1,122,390.56	976,672.38		2,099,062.94
230 PSERS Retirement Contributions	3,858,478.34	3,346,710.89		7,205,189.23
240 Tuition Reimbursement	90,078.05	61,440.03		151,518.08
250 Unemployment Compensation	50,189.73	42,310.37		92,500.10
260 Workers' Compensation	131,549.68	114,374.90		245,924.58
270 Group Insurance – Self-Insurance	4,236,099.69	3,464,919.42		7,701,019.11
Total Personnel Services – Employee Benefits	\$9,488,786.05	\$8,006,427.99		\$17,495,214.04
300 Purchased Professional and Technical Services				
322 Professional Educational Services – Ius		152,522.42		152,522.42
324 Professional Educational Services – Employee Training and Development Services		5,687.00		5,687.00
329 Professional Educational Services – Other	511,137.71	193,840.27		704,977.98
330 Other Professional Services	837.75	1,662.25		2,500.00
Total Purchased Professional and Technical Services	\$511,975.46	\$353,711.94		\$865,687.40
400 Purchased Property Services				
430 Repairs and Maintenance Services	1,438.27	3,485.00		4,923.27
440 Rentals	81,848.67	77,981.54		159,830.21
Total Purchased Property Services	\$83,286.94	\$81,466.54		\$164,753.48
500 Other Purchased Services				
510 Student Transportation Services	4,285.23	5,379.54		9,664.77
550 Printing and Binding	2,174.35	2,451.67		4,626.02
561 Tuition To Other School Districts Within the State		87,352.64		87,352.64
562 Tuition To Pennsylvania Charter Schools	12,634,895.83	6,055,778.47		18,690,674.30
566 Tuition To Institutions of Higher Education and Technical Institutes		166,328.00		166,328.00
568 Tuition To Private Residential Rehabilitative Institutions (PRRI) [In-State] and Detention Centers		139,662.28		139,662.28
580 Travel	86.90	38.15		125.05
Total Other Purchased Services	\$12,641,442.31	\$6,456,990.75		\$19,098,433.06
600 Supplies				
610 General Supplies	163,041.46	152,500.99		315,542.45
640 Books and Periodicals	41,033.99	22,312.33		63,346.32
650 Supplies & Fees – Technology Related	31.84	34,095.76		34,127.60
Total Supplies	\$204,107.29	\$208,909.08		\$413,016.37
700 Property				
750 Equipment – Original and Additional	1,433.83	4,944.97		6,378.80
760 Equipment – Replacement	5,162.90	1,273.08		6,435.98
Total Property	\$6,596.73	\$6,218.05		\$12,814.78
800 Other Objects				
810 Dues and Fees	81.26	161.24		242.50

LEA : 124151902 Coatesville Area SD

Printed 2/9/2018 1:26:19 PM

General Fund (10)

1110 Regular Programs

	<u>Elementary</u>	<u>Secondary</u>	<u>Federal</u>	<u>Total</u>
Total Other Objects	\$81.26	\$161.24		\$242.50
Total 1110 Regular Programs	\$37,868,183.23	\$28,087,810.88		\$65,955,994.11

General Fund (10)

1190 Federally-Funded Regular Programs

	<u>Elementary</u>	<u>Secondary</u>	<u>Federal</u>	<u>Total</u>
100 Personnel Services – Salaries				
100 Personnel Services – Salaries			720,496.83	720,496.83
Total Personnel Services – Salaries			\$720,496.83	\$720,496.83
200 Personnel Services – Employee Benefits				
220 Social Security Contributions			54,323.68	54,323.68
230 PSERS Retirement Contributions			185,748.73	185,748.73
250 Unemployment Compensation			2,888.82	2,888.82
260 Workers' Compensation			6,275.72	6,275.72
270 Group Insurance – Self-Insurance			200,460.15	200,460.15
Total Personnel Services – Employee Benefits			\$449,697.10	\$449,697.10
300 Purchased Professional and Technical Services				
324 Professional Educational Services – Employee Training and Development Services			80,825.44	80,825.44
Total Purchased Professional and Technical Services			\$80,825.44	\$80,825.44
500 Other Purchased Services				
510 Student Transportation Services			373.19	373.19
Total Other Purchased Services			\$373.19	\$373.19
600 Supplies				
610 General Supplies			364,911.27	364,911.27
640 Books and Periodicals			200,697.63	200,697.63
Total Supplies			\$565,608.90	\$565,608.90
Total 1190 Federally-Funded Regular Programs			\$1,817,001.46	\$1,817,001.46

General Fund (10)

1200 Special Programs – Elementary / Secondary

	<u>Elementary</u>	<u>Secondary</u>	<u>Federal</u>	<u>Total</u>
100 Personnel Services – Salaries				
100 Personnel Services – Salaries	3,137,072.02	2,111,743.71	284,135.03	5,532,950.76
Total Personnel Services – Salaries	\$3,137,072.02	\$2,111,743.71	\$284,135.03	\$5,532,950.76
200 Personnel Services – Employee Benefits				
220 Social Security Contributions	236,147.30	158,784.50	21,403.67	416,335.47
230 PSERS Retirement Contributions	807,242.03	538,907.18	73,420.26	1,419,569.47
250 Unemployment Compensation	13,956.04	10,137.20	543.11	24,636.35
260 Workers' Compensation	27,437.29	18,131.92	2,568.39	48,137.60
270 Group Insurance – Self-Insurance	859,280.80	674,343.33	45,568.64	1,579,192.77
Total Personnel Services – Employee Benefits	\$1,944,063.46	\$1,400,304.13	\$143,504.07	\$3,487,871.66
300 Purchased Professional and Technical Services				
322 Professional Educational Services – lus		9,152,957.85	1,082,262.45	10,235,220.30
323 Professional Educational Services – Other Educational Agencies		1,515,893.91		1,515,893.91
329 Professional Educational Services – Other		430,545.16		430,545.16
330 Other Professional Services		1,472,440.76	9,112.65	1,481,553.41
Total Purchased Professional and Technical Services		\$12,571,837.68	\$1,091,375.10	\$13,663,212.78
500 Other Purchased Services				
510 Student Transportation Services		391,255.62		391,255.62
561 Tuition To Other School Districts Within the State		84,298.09		84,298.09
562 Tuition To Pennsylvania Charter Schools	5,139,524.73	2,463,322.51		7,602,847.24
567 Tuition To Approved Private Schools (APS) and PA Chartered Schools for the Deaf and Blind		2,227,436.20		2,227,436.20
568 Tuition To Private Residential Rehabilitative Institutions (PRRI) [In-State] and Detention Centers		2,618.94		2,618.94
580 Travel		1,366.54		1,366.54
591 Services Purchased Locally		1,597.34		1,597.34
Total Other Purchased Services	\$5,139,524.73	\$5,171,895.24		\$10,311,419.97
600 Supplies				
610 General Supplies	4,011.45	5,973.00		9,984.45
640 Books and Periodicals		4,575.95		4,575.95
650 Supplies & Fees – Technology Related		7,959.40		7,959.40
Total Supplies	\$4,011.45	\$18,508.35		\$22,519.80
700 Property				
750 Equipment – Original and Additional		8,777.73		8,777.73
Total Property		\$8,777.73		\$8,777.73
800 Other Objects				
810 Dues and Fees		595.00		595.00
820 Claims and Judgments Against the LEA		98,558.16		98,558.16
Total Other Objects		\$99,153.16		\$99,153.16
Total 1200 Special Programs – Elementary / Secondary	\$10,224,671.66	\$21,382,220.00	\$1,519,014.20	\$33,125,905.86

General Fund (10)

1210 Life Skills Support

	<u>Elementary</u>	<u>Secondary</u>	<u>Federal</u>	<u>Total</u>
100 Personnel Services – Salaries				
100 Personnel Services – Salaries	181,104.07	252,771.45		433,875.52
Total Personnel Services – Salaries	\$181,104.07	\$252,771.45		\$433,875.52
200 Personnel Services – Employee Benefits				
220 Social Security Contributions	13,672.52	19,214.28		32,886.80
230 PSERS Retirement Contributions	46,797.23	65,316.19		112,113.42
250 Unemployment Compensation	681.77	874.53		1,556.30
260 Workers' Compensation	1,593.93	2,224.31		3,818.24
270 Group Insurance – Self-Insurance	62,609.63	50,895.15		113,504.78
Total Personnel Services – Employee Benefits	\$125,355.08	\$138,524.46		\$263,879.54
300 Purchased Professional and Technical Services				
322 Professional Educational Services – lus		580,369.64		580,369.64
Total Purchased Professional and Technical Services		\$580,369.64		\$580,369.64
Total 1210 Life Skills Support	\$306,459.15	\$971,665.55		\$1,278,124.70

General Fund (10)

1220 Sensory Support

	<u>Elementary</u>	<u>Secondary</u>	<u>Federal</u>	<u>Total</u>
100 Personnel Services – Salaries				
100 Personnel Services – Salaries	98,233.00			98,233.00
Total Personnel Services – Salaries	\$98,233.00			\$98,233.00
200 Personnel Services – Employee Benefits				
220 Social Security Contributions	7,474.19			7,474.19
230 PSERS Retirement Contributions	25,383.47			25,383.47
250 Unemployment Compensation	290.23			290.23
260 Workers' Compensation	864.17			864.17
270 Group Insurance – Self-Insurance	20,656.34			20,656.34
Total Personnel Services – Employee Benefits	\$54,668.40			\$54,668.40
300 Purchased Professional and Technical Services				
322 Professional Educational Services – lus		645,506.94	3,874.00	649,380.94
323 Professional Educational Services – Other Educational Agencies		27,165.25		27,165.25
330 Other Professional Services		564,383.74		564,383.74
Total Purchased Professional and Technical Services		\$1,237,055.93	\$3,874.00	\$1,240,929.93
500 Other Purchased Services				
580 Travel		203.95		203.95
Total Other Purchased Services		\$203.95		\$203.95
Total 1220 Sensory Support	\$152,901.40	\$1,237,259.88	\$3,874.00	\$1,394,035.28

General Fund (10)

1230 Emotional Support

	<u>Elementary</u>	<u>Secondary</u>	<u>Federal</u>	<u>Total</u>
100 Personnel Services – Salaries				
100 Personnel Services – Salaries	208,039.00	152,871.82	284,135.03	645,045.85
Total Personnel Services – Salaries	\$208,039.00	\$152,871.82	\$284,135.03	\$645,045.85
200 Personnel Services – Employee Benefits				
220 Social Security Contributions	15,634.69	11,523.19	21,403.67	48,561.55
230 PSERS Retirement Contributions	53,757.20	39,502.16	73,420.26	166,679.62
250 Unemployment Compensation	1,174.05	637.09	543.11	2,354.25
260 Workers' Compensation	1,795.74	1,336.23	2,568.39	5,700.36
270 Group Insurance – Self-Insurance	88,655.47	22,733.21	45,568.64	156,957.32
Total Personnel Services – Employee Benefits	\$161,017.15	\$75,731.88	\$143,504.07	\$380,253.10
300 Purchased Professional and Technical Services				
322 Professional Educational Services – lus		2,845,296.11		2,845,296.11
Total Purchased Professional and Technical Services		\$2,845,296.11		\$2,845,296.11
500 Other Purchased Services				
591 Services Purchased Locally		1,597.34		1,597.34
Total Other Purchased Services		\$1,597.34		\$1,597.34
Total 1230 Emotional Support	\$369,056.15	\$3,075,497.15	\$427,639.10	\$3,872,192.40

General Fund (10)

1240 Academic Support

	<u>Elementary</u>	<u>Secondary</u>	<u>Federal</u>	<u>Total</u>
100 Personnel Services – Salaries				
100 Personnel Services – Salaries	2,624,453.72	1,693,529.43		4,317,983.15
Total Personnel Services – Salaries	\$2,624,453.72	\$1,693,529.43		\$4,317,983.15
200 Personnel Services – Employee Benefits				
220 Social Security Contributions	197,664.16	127,125.56		324,789.72
230 PSERS Retirement Contributions	674,781.60	430,840.47		1,105,622.07
250 Unemployment Compensation	11,654.65	8,549.28		20,203.93
260 Workers' Compensation	22,961.43	14,460.76		37,422.19
270 Group Insurance – Self-Insurance	650,865.13	582,577.08		1,233,442.21
Total Personnel Services – Employee Benefits	\$1,557,926.97	\$1,163,553.15		\$2,721,480.12
300 Purchased Professional and Technical Services				
322 Professional Educational Services – lus		1,402,838.09		1,402,838.09
323 Professional Educational Services – Other Educational Agencies		1,488,728.66		1,488,728.66
329 Professional Educational Services – Other		379,433.21		379,433.21
330 Other Professional Services		280,531.31	9,112.65	289,643.96
Total Purchased Professional and Technical Services		\$3,551,531.27	\$9,112.65	\$3,560,643.92
500 Other Purchased Services				
510 Student Transportation Services		391,255.62		391,255.62
580 Travel		1,162.59		1,162.59
Total Other Purchased Services		\$392,418.21		\$392,418.21
600 Supplies				
610 General Supplies	4,011.45	5,973.00		9,984.45
640 Books and Periodicals		4,575.95		4,575.95
650 Supplies & Fees – Technology Related		7,959.40		7,959.40
Total Supplies	\$4,011.45	\$18,508.35		\$22,519.80
700 Property				
750 Equipment – Original and Additional		4,814.29		4,814.29
Total Property		\$4,814.29		\$4,814.29
800 Other Objects				
810 Dues and Fees		595.00		595.00
820 Claims and Judgments Against the LEA		98,558.16		98,558.16
Total Other Objects		\$99,153.16		\$99,153.16
Total 1240 Academic Support	\$4,186,392.14	\$6,923,507.86	\$9,112.65	\$11,119,012.65

General Fund (10)

	<u>Elementary</u>	<u>Secondary</u>	<u>Federal</u>	<u>Total</u>
1241 Learning Support – Public				
100 Personnel Services – Salaries				
100 Personnel Services – Salaries	2,441,187.39	1,525,847.26		3,967,034.65
Total Personnel Services – Salaries	\$2,441,187.39	\$1,525,847.26		\$3,967,034.65
200 Personnel Services – Employee Benefits				
220 Social Security Contributions	184,078.73	114,516.70		298,595.43
230 PSERS Retirement Contributions	627,425.63	387,511.52		1,014,937.15
250 Unemployment Compensation	11,249.79	8,020.34		19,270.13
260 Workers' Compensation	21,329.96	12,985.41		34,315.37
270 Group Insurance – Self-Insurance	596,438.48	537,200.62		1,133,639.10
Total Personnel Services – Employee Benefits	\$1,440,522.59	\$1,060,234.59		\$2,500,757.18
300 Purchased Professional and Technical Services				
322 Professional Educational Services – lus		1,402,838.09		1,402,838.09
323 Professional Educational Services – Other Educational Agencies		1,488,728.66		1,488,728.66
329 Professional Educational Services – Other		379,433.21		379,433.21
330 Other Professional Services		280,531.31	9,112.65	289,643.96
Total Purchased Professional and Technical Services		\$3,551,531.27	\$9,112.65	\$3,560,643.92
500 Other Purchased Services				
510 Student Transportation Services		388,457.62		388,457.62
580 Travel		1,162.59		1,162.59
Total Other Purchased Services		\$389,620.21		\$389,620.21
600 Supplies				
610 General Supplies	3,219.73	3,363.11		6,582.84
640 Books and Periodicals		4,392.25		4,392.25
650 Supplies & Fees – Technology Related		7,959.40		7,959.40
Total Supplies	\$3,219.73	\$15,714.76		\$18,934.49
700 Property				
750 Equipment – Original and Additional		4,814.29		4,814.29
Total Property		\$4,814.29		\$4,814.29
800 Other Objects				
820 Claims and Judgments Against the LEA		98,558.16		98,558.16
Total Other Objects		\$98,558.16		\$98,558.16
Total 1241 Learning Support – Public	\$3,884,929.71	\$6,646,320.54	\$9,112.65	\$10,540,362.90

General Fund (10)

1243 Gifted Support

	<u>Elementary</u>	<u>Secondary</u>	<u>Federal</u>	<u>Total</u>
100 Personnel Services – Salaries				
100 Personnel Services – Salaries	183,266.33	167,682.17		350,948.50
Total Personnel Services – Salaries	\$183,266.33	\$167,682.17		\$350,948.50
200 Personnel Services – Employee Benefits				
220 Social Security Contributions	13,585.43	12,608.86		26,194.29
230 PSERS Retirement Contributions	47,355.97	43,328.95		90,684.92
250 Unemployment Compensation	404.86	528.94		933.80
260 Workers' Compensation	1,631.47	1,475.35		3,106.82
270 Group Insurance – Self-Insurance	54,426.65	45,376.46		99,803.11
Total Personnel Services – Employee Benefits	\$117,404.38	\$103,318.56		\$220,722.94
500 Other Purchased Services				
510 Student Transportation Services		2,798.00		2,798.00
Total Other Purchased Services		\$2,798.00		\$2,798.00
600 Supplies				
610 General Supplies	791.72	2,609.89		3,401.61
640 Books and Periodicals		183.70		183.70
Total Supplies	\$791.72	\$2,793.59		\$3,585.31
800 Other Objects				
810 Dues and Fees		595.00		595.00
Total Other Objects		\$595.00		\$595.00
Total 1243 Gifted Support	\$301,462.43	\$277,187.32		\$578,649.75

General Fund (10)

1270 Multi-Handicapped Support

300 Purchased Professional and Technical Services

	<u>Elementary</u>	<u>Secondary</u>	<u>Federal</u>	<u>Total</u>
322 Professional Educational Services – lus		1,128,708.47	1,078,388.45	2,207,096.92
329 Professional Educational Services – Other		51,111.95		51,111.95
330 Other Professional Services		575,543.46		575,543.46

Total Purchased Professional and Technical Services		\$1,755,363.88	\$1,078,388.45	\$2,833,752.33
--	--	-----------------------	-----------------------	-----------------------

700 Property

750 Equipment – Original and Additional		3,963.44		3,963.44
---	--	----------	--	----------

Total Property		\$3,963.44		\$3,963.44
-----------------------	--	-------------------	--	-------------------

Total 1270 Multi-Handicapped Support		\$1,759,327.32	\$1,078,388.45	\$2,837,715.77
---	--	-----------------------	-----------------------	-----------------------

General Fund (10)

	<u>Elementary</u>	<u>Secondary</u>	<u>Federal</u>	<u>Total</u>
1290 Special Programs - Other Support				
100 Personnel Services – Salaries				
100 Personnel Services – Salaries	25,242.23	12,571.01		37,813.24
Total Personnel Services – Salaries	\$25,242.23	\$12,571.01		\$37,813.24
200 Personnel Services – Employee Benefits				
220 Social Security Contributions	1,701.74	921.47		2,623.21
230 PSERS Retirement Contributions	6,522.53	3,248.36		9,770.89
250 Unemployment Compensation	155.34	76.30		231.64
260 Workers' Compensation	222.02	110.62		332.64
270 Group Insurance – Self-Insurance	36,494.23	18,137.89		54,632.12
Total Personnel Services – Employee Benefits	\$45,095.86	\$22,494.64		\$67,590.50
300 Purchased Professional and Technical Services				
322 Professional Educational Services – lus		2,550,238.60		2,550,238.60
330 Other Professional Services		51,982.25		51,982.25
Total Purchased Professional and Technical Services		\$2,602,220.85		\$2,602,220.85
500 Other Purchased Services				
561 Tuition To Other School Districts Within the State		84,298.09		84,298.09
562 Tuition To Pennsylvania Charter Schools	5,139,524.73	2,463,322.51		7,602,847.24
567 Tuition To Approved Private Schools (APS) and PA Chartered Schools for the Deaf and Blind		2,227,436.20		2,227,436.20
568 Tuition To Private Residential Rehabilitative Institutions (PRRI) [In-State] and Detention Centers		2,618.94		2,618.94
Total Other Purchased Services	\$5,139,524.73	\$4,777,675.74		\$9,917,200.47
Total 1290 Special Programs - Other Support	\$5,209,862.82	\$7,414,962.24		\$12,624,825.06

LEA : 124151902 Coatesville Area SD

Printed 2/9/2018 1:26:19 PM

General Fund (10)

1300 Vocational Education

	<u>Elementary</u>	<u>Secondary</u>	<u>Federal</u>	<u>Total</u>
100 Personnel Services – Salaries				
100 Personnel Services – Salaries		503,784.74		503,784.74
Total Personnel Services – Salaries		\$503,784.74		\$503,784.74
200 Personnel Services – Employee Benefits				
220 Social Security Contributions		38,201.14		38,201.14
230 PSERS Retirement Contributions		127,989.55		127,989.55
250 Unemployment Compensation		1,643.91		1,643.91
260 Workers' Compensation		4,430.20		4,430.20
270 Group Insurance – Self-Insurance		123,079.85		123,079.85
Total Personnel Services – Employee Benefits		\$295,344.65		\$295,344.65
400 Purchased Property Services				
430 Repairs and Maintenance Services		2,426.56		2,426.56
Total Purchased Property Services		\$2,426.56		\$2,426.56
500 Other Purchased Services				
564 Tuition To Career and Technology Centers		2,600,984.00		2,600,984.00
Total Other Purchased Services		\$2,600,984.00		\$2,600,984.00
600 Supplies				
610 General Supplies		19,975.92		19,975.92
640 Books and Periodicals		163.61		163.61
650 Supplies & Fees – Technology Related		1,539.87		1,539.87
Total Supplies		\$21,679.40		\$21,679.40
700 Property				
750 Equipment – Original and Additional		467.08		467.08
760 Equipment – Replacement		788.24		788.24
Total Property		\$1,255.32		\$1,255.32
Total 1300 Vocational Education		\$3,425,474.67		\$3,425,474.67

General Fund (10)

	<u>Elementary</u>	<u>Secondary</u>	<u>Federal</u>	<u>Total</u>
1400 Other Instructional Programs – Elementary / Secondary				
100 Personnel Services – Salaries				
100 Personnel Services – Salaries	7,495.19	147,968.49		155,463.68
Total Personnel Services – Salaries	\$7,495.19	\$147,968.49		\$155,463.68
200 Personnel Services – Employee Benefits				
220 Social Security Contributions	569.13	11,097.41		11,666.54
230 PSERS Retirement Contributions	1,936.76	37,825.66		39,762.42
250 Unemployment Compensation	2.45	522.31		524.76
260 Workers' Compensation	67.73	1,296.73		1,364.46
270 Group Insurance – Self-Insurance		43,333.55		43,333.55
Total Personnel Services – Employee Benefits	\$2,576.07	\$94,075.66		\$96,651.73
400 Purchased Property Services				
440 Rentals		2,751.60		2,751.60
Total Purchased Property Services		\$2,751.60		\$2,751.60
Total 1400 Other Instructional Programs – Elementary / Secondary	\$10,071.26	\$244,795.75		\$254,867.01

General Fund (10)

1420 Summer School

100 Personnel Services – Salaries

	<u>Elementary</u>	<u>Secondary</u>	<u>Federal</u>	<u>Total</u>
100 Personnel Services – Salaries	4,174.51	8,282.99		12,457.50
Total Personnel Services – Salaries	\$4,174.51	\$8,282.99		\$12,457.50

200 Personnel Services – Employee Benefits

220 Social Security Contributions	319.36	633.67		953.03
230 PSERS Retirement Contributions	1,078.69	2,140.32		3,219.01
260 Workers’ Compensation	37.73	74.87		112.60
Total Personnel Services – Employee Benefits	\$1,435.78	\$2,848.86		\$4,284.64

Total 1420 Summer School	\$5,610.29	\$11,131.85		\$16,742.14
---------------------------------	-------------------	--------------------	--	--------------------

General Fund (10)

	<u>Elementary</u>	<u>Secondary</u>	<u>Federal</u>	<u>Total</u>
1430 Homebound Instruction				
100 Personnel Services – Salaries				
100 Personnel Services – Salaries	3,320.68	19,746.32		23,067.00
Total Personnel Services – Salaries	\$3,320.68	\$19,746.32		\$23,067.00
200 Personnel Services – Employee Benefits				
220 Social Security Contributions	249.77	1,495.85		1,745.62
230 PSERS Retirement Contributions	858.07	4,693.15		5,551.22
250 Unemployment Compensation	2.45	18.10		20.55
260 Workers' Compensation	30.00	178.44		208.44
Total Personnel Services – Employee Benefits	\$1,140.29	\$6,385.54		\$7,525.83
Total 1430 Homebound Instruction	\$4,460.97	\$26,131.86		\$30,592.83

General Fund (10)

1440 Alternative Regular Education Programs

100 Personnel Services – Salaries

100 Personnel Services – Salaries

Elementary Secondary Federal Total

Total Personnel Services – Salaries

119,939.18 119,939.18

\$119,939.18 \$119,939.18

200 Personnel Services – Employee Benefits

220 Social Security Contributions

230 PSERS Retirement Contributions

250 Unemployment Compensation

260 Workers' Compensation

270 Group Insurance – Self-Insurance

8,967.89 8,967.89

30,992.19 30,992.19

504.21 504.21

1,043.42 1,043.42

43,333.55 43,333.55

Total Personnel Services – Employee Benefits

\$84,841.26 \$84,841.26

400 Purchased Property Services

440 Rentals

2,751.60 2,751.60

Total Purchased Property Services

\$2,751.60 \$2,751.60

Total 1440 Alternative Regular Education Programs

\$207,532.04 \$207,532.04

General Fund (10)

1442 Alternative Education Programs

100 Personnel Services – Salaries

	<u>Elementary</u>	<u>Secondary</u>	<u>Federal</u>	<u>Total</u>
100 Personnel Services – Salaries		119,939.18		119,939.18
Total Personnel Services – Salaries		\$119,939.18		\$119,939.18

200 Personnel Services – Employee Benefits

220 Social Security Contributions		8,967.89		8,967.89
230 PSERS Retirement Contributions		30,992.19		30,992.19
250 Unemployment Compensation		504.21		504.21
260 Workers' Compensation		1,043.42		1,043.42
270 Group Insurance – Self-Insurance		43,333.55		43,333.55
Total Personnel Services – Employee Benefits		\$84,841.26		\$84,841.26

400 Purchased Property Services

440 Rentals		2,751.60		2,751.60
Total Purchased Property Services		\$2,751.60		\$2,751.60
Total 1442 Alternative Education Programs		\$207,532.04		\$207,532.04

LEA : 124151902 Coatesville Area SD

Printed 2/9/2018 1:26:19 PM

General Fund (10)

1500 Nonpublic School Programs

Elementary

Secondary

Federal

Total

300 Purchased Professional and Technical Services

324 Professional Educational Services – Employee Training and Development Services

24,390.07

24,390.07

Total Purchased Professional and Technical Services

\$24,390.07

\$24,390.07

Total 1500 Nonpublic School Programs

\$24,390.07

\$24,390.07

General Fund (10)

2000 Support Services

Total

100 Personnel Services – Salaries

100 Personnel Services – Salaries 12,041,484.48

Total Personnel Services – Salaries \$12,041,484.48

200 Personnel Services – Employee Benefits

220 Social Security Contributions 887,995.76

230 PSERS Retirement Contributions 3,052,381.94

250 Unemployment Compensation 45,571.68

260 Workers’ Compensation 105,619.40

270 Group Insurance – Self-Insurance 3,860,035.49

Total Personnel Services – Employee Benefits \$7,951,604.27

300 Purchased Professional and Technical Services

322 Professional Educational Services – Ius 5,216.89

324 Professional Educational Services – Employee Training and Development Services 90,006.07

330 Other Professional Services 2,441,881.80

340 Technical Services 608,513.24

350 Security / Safety Services 76,882.62

390 Other Purchased Professional and Technical Services 23,285.72

Total Purchased Professional and Technical Services \$3,245,786.34

400 Purchased Property Services

410 Cleaning Services 139,012.17

420 Utility Services 1,597,435.71

430 Repairs and Maintenance Services 254,525.02

440 Rentals 475,509.22

460 Extermination Services 9,934.38

Total Purchased Property Services \$2,476,416.50

500 Other Purchased Services

513 Contracted Carriers 8,908,428.77

516 Student Transportation Services From the IU 23,612.27

519 Student Transportation Services From Other Sources 10.00

520 Insurance – General 150.00

521 Fire Insurance 135,202.00

522 Automotive Liability Insurance 17,463.00

523 General Property and Liability Insurance 79,447.00

529 Other Insurance 19,997.00

530 Communications 295,420.73

541 Advertising Related to Federal Grant Awards 3,716.26

549 Other Advertising/Public Relations 1,044.92

580 Travel 7,133.92

595 IU Payments By Withholding 49,973.23

Total Other Purchased Services \$9,541,599.10

600 Supplies

610 General Supplies 703,356.84

620 Energy 432,662.81

630 Food 7,878.69

LEA : 124151902 Coatesville Area SD

Printed 2/9/2018 1:26:23 PM

General Fund (10)

2000 Support Services

Total

600 <u>Supplies</u>	
640 Books and Periodicals	322,747.47
650 Supplies & Fees – Technology Related	22,679.52
Total Supplies	\$1,489,325.33
700 <u>Property</u>	
750 Equipment – Original and Additional	36,314.61
760 Equipment – Replacement	585,074.96
Total Property	\$621,389.57
800 <u>Other Objects</u>	
810 Dues and Fees	432,861.18
890 Miscellaneous Expenditures	810.23
Total Other Objects	\$433,671.41
Total 2000 Support Services	\$37,801,277.00

LEA : 124151902 Coatesville Area SD

Printed 2/9/2018 1:26:23 PM

General Fund (10)

2100 Support Services – Students

100 Personnel Services – Salaries

	<u>Elementary</u>	<u>Secondary</u>	<u>Federal</u>	<u>Total</u>
100 Personnel Services – Salaries	928,624.08	1,131,839.21		2,362,522.97
Total Personnel Services – Salaries	\$928,624.08	\$1,131,839.21		\$2,362,522.97

200 Personnel Services – Employee Benefits

220 Social Security Contributions	69,583.55	85,496.75		178,009.11
230 PSERS Retirement Contributions	237,072.06	288,592.90		600,211.74
250 Unemployment Compensation	3,532.61	3,514.64		8,266.94
260 Workers' Compensation	8,167.59	9,978.07		20,797.91
270 Group Insurance – Self-Insurance	276,037.18	339,298.22		691,276.14
Total Personnel Services – Employee Benefits	\$594,392.99	\$726,880.58		\$1,498,561.84

300 Purchased Professional and Technical Services

330 Other Professional Services		441,180.70		441,180.70
Total Purchased Professional and Technical Services		\$441,180.70		\$441,180.70

500 Other Purchased Services

580 Travel				1,767.30
Total Other Purchased Services				\$1,767.30

600 Supplies

610 General Supplies	950.15	61,659.33		63,227.32
630 Food		113.10		113.10
640 Books and Periodicals				708.00
650 Supplies & Fees – Technology Related		10,200.00		10,200.00
Total Supplies	\$950.15	\$71,972.43		\$74,248.42

800 Other Objects

810 Dues and Fees	50.27	99.75		210.02
Total Other Objects	\$50.27	\$99.75		\$210.02

Total 2100 Support Services – Students

	\$1,524,017.49	\$2,371,972.67		\$4,378,491.25
--	-----------------------	-----------------------	--	-----------------------

General Fund (10)

	<u>Elementary</u>	<u>Secondary</u>	<u>Federal</u>	<u>Total</u>
2110 Supervision of Student Services				
100 Personnel Services – Salaries				
100 Personnel Services – Salaries		3,839.68		3,839.68
Total Personnel Services – Salaries		\$3,839.68		\$3,839.68
200 Personnel Services – Employee Benefits				
220 Social Security Contributions		289.13		289.13
230 PSERS Retirement Contributions		457.93		457.93
260 Workers’ Compensation		34.71		34.71
270 Group Insurance – Self-Insurance		1,966.79		1,966.79
Total Personnel Services – Employee Benefits		\$2,748.56		\$2,748.56
Total 2110 Supervision of Student Services		\$6,588.24		\$6,588.24

General Fund (10)

	<u>Elementary</u>	<u>Secondary</u>	<u>Federal</u>	<u>Total</u>
2111 Supervision of Student Services – Head of Component				
100 Personnel Services – Salaries				
100 Personnel Services – Salaries		3,839.68		3,839.68
Total Personnel Services – Salaries		\$3,839.68		\$3,839.68
200 Personnel Services – Employee Benefits				
220 Social Security Contributions		289.13		289.13
230 PSERS Retirement Contributions		457.93		457.93
260 Workers’ Compensation		34.71		34.71
270 Group Insurance – Self-Insurance		1,966.79		1,966.79
Total Personnel Services – Employee Benefits		\$2,748.56		\$2,748.56
Total 2111 Supervision of Student Services – Head of Component		\$6,588.24		\$6,588.24

General Fund (10)

	<u>Elementary</u>	<u>Secondary</u>	<u>Federal</u>	<u>Total</u>
2120 Guidance Services				
100 Personnel Services – Salaries				
100 Personnel Services – Salaries	660,750.83	1,086,131.22		1,746,882.05
Total Personnel Services – Salaries	\$660,750.83	\$1,086,131.22		\$1,746,882.05
200 Personnel Services – Employee Benefits				
220 Social Security Contributions	49,357.19	82,029.69		131,386.88
230 PSERS Retirement Contributions	170,738.24	280,250.55		450,988.79
250 Unemployment Compensation	2,152.60	3,181.51		5,334.11
260 Workers' Compensation	5,825.37	9,588.46		15,413.83
270 Group Insurance – Self-Insurance	181,314.83	310,827.60		492,142.43
Total Personnel Services – Employee Benefits	\$409,388.23	\$685,877.81		\$1,095,266.04
600 Supplies				
610 General Supplies	950.15	259.77		1,209.92
630 Food		113.10		113.10
650 Supplies & Fees – Technology Related		10,200.00		10,200.00
Total Supplies	\$950.15	\$10,572.87		\$11,523.02
800 Other Objects				
810 Dues and Fees	50.27	99.75		150.02
Total Other Objects	\$50.27	\$99.75		\$150.02
Total 2120 Guidance Services	\$1,071,139.48	\$1,782,681.65		\$2,853,821.13

General Fund (10)

2130 Attendance Services

Elementary Secondary Federal Total

100	<u>Personnel Services – Salaries</u>				
	100 Personnel Services – Salaries				261,042.93
Total Personnel Services – Salaries					\$261,042.93
200	<u>Personnel Services – Employee Benefits</u>				
	220 Social Security Contributions				19,803.11
	230 PSERS Retirement Contributions				65,008.21
	250 Unemployment Compensation				1,023.88
	260 Workers' Compensation				2,294.79
	270 Group Insurance – Self-Insurance				68,807.78
Total Personnel Services – Employee Benefits					\$156,937.77
500	<u>Other Purchased Services</u>				
	580 Travel				1,767.30
Total Other Purchased Services					\$1,767.30
600	<u>Supplies</u>				
	610 General Supplies				345.27
	640 Books and Periodicals				708.00
Total Supplies					\$1,053.27
Total 2130 Attendance Services					\$420,801.27

General Fund (10)

	<u>Elementary</u>	<u>Secondary</u>	<u>Federal</u>	<u>Total</u>
2140 Psychological Services				
100 Personnel Services – Salaries				
100 Personnel Services – Salaries	267,873.25	41,868.31		309,741.56
Total Personnel Services – Salaries	\$267,873.25	\$41,868.31		\$309,741.56
200 Personnel Services – Employee Benefits				
220 Social Security Contributions	20,226.36	3,177.93		23,404.29
230 PSERS Retirement Contributions	66,333.82	7,884.42		74,218.24
250 Unemployment Compensation	1,380.01	333.13		1,713.14
260 Workers' Compensation	2,342.22	354.90		2,697.12
270 Group Insurance – Self-Insurance	94,722.35	26,503.83		121,226.18
Total Personnel Services – Employee Benefits	\$185,004.76	\$38,254.21		\$223,258.97
300 Purchased Professional and Technical Services				
330 Other Professional Services		441,180.70		441,180.70
Total Purchased Professional and Technical Services		\$441,180.70		\$441,180.70
600 Supplies				
610 General Supplies		61,399.56		61,399.56
Total Supplies		\$61,399.56		\$61,399.56
Total 2140 Psychological Services	\$452,878.01	\$582,702.78		\$1,035,580.79

General Fund (10)

2170 Student Accounting Services

Elementary

Secondary

Federal

Total

100 Personnel Services – Salaries

100 Personnel Services – Salaries

41,016.75

Total Personnel Services – Salaries

\$41,016.75

200 Personnel Services – Employee Benefits

220 Social Security Contributions

3,125.70

230 PSERS Retirement Contributions

9,538.57

250 Unemployment Compensation

195.81

260 Workers' Compensation

357.46

270 Group Insurance – Self-Insurance

7,132.96

Total Personnel Services – Employee Benefits

\$20,350.50

600 Supplies

610 General Supplies

272.57

Total Supplies

\$272.57

800 Other Objects

810 Dues and Fees

60.00

Total Other Objects

\$60.00

Total 2170 Student Accounting Services

\$61,699.82

General Fund (10)

2200 Support Services – Instructional Staff

	<u>Elementary</u>	<u>Secondary</u>	<u>Federal</u>	<u>Total</u>
100 Personnel Services – Salaries				
100 Personnel Services – Salaries	262,022.01	821,143.61	118,873.47	1,202,039.09
Total Personnel Services – Salaries	\$262,022.01	\$821,143.61	\$118,873.47	\$1,202,039.09
200 Personnel Services – Employee Benefits				
220 Social Security Contributions	19,840.22	58,489.74	8,870.97	87,200.93
230 PSERS Retirement Contributions	67,663.31	219,812.55	30,578.06	318,053.92
250 Unemployment Compensation	1,275.04	4,293.91	119.84	5,688.79
260 Workers' Compensation	2,260.87	7,090.99	1,055.38	10,407.24
270 Group Insurance – Self-Insurance	93,565.07	330,684.23	21,233.03	445,482.33
Total Personnel Services – Employee Benefits	\$184,604.51	\$620,371.42	\$61,857.28	\$866,833.21
300 Purchased Professional and Technical Services				
322 Professional Educational Services – lus			4,929.61	4,929.61
324 Professional Educational Services – Employee Training and Development Services			71,091.87	71,091.87
330 Other Professional Services		7,300.00		7,300.00
390 Other Purchased Professional and Technical Services			4,643.05	4,643.05
Total Purchased Professional and Technical Services		\$7,300.00	\$80,664.53	\$87,964.53
500 Other Purchased Services				
580 Travel		4,498.03		4,498.03
Total Other Purchased Services		\$4,498.03		\$4,498.03
600 Supplies				
610 General Supplies	28,215.51	742.28	7,873.42	36,831.21
640 Books and Periodicals	7,677.22	295,987.76		303,664.98
650 Supplies & Fees – Technology Related	10,764.46	1,653.64		12,418.10
Total Supplies	\$46,657.19	\$298,383.68	\$7,873.42	\$352,914.29
800 Other Objects				
810 Dues and Fees		5,175.00		5,175.00
Total Other Objects		\$5,175.00		\$5,175.00
Total 2200 Support Services – Instructional Staff	\$493,283.71	\$1,756,871.74	\$269,268.70	\$2,519,424.15

General Fund (10)

2240 Computer-Assisted Instruction Support Services

100 Personnel Services – Salaries

	<u>Elementary</u>	<u>Secondary</u>	<u>Federal</u>	<u>Total</u>
100 Personnel Services – Salaries	8,127.25	426,766.62		434,893.87
Total Personnel Services – Salaries	\$8,127.25	\$426,766.62		\$434,893.87

200 Personnel Services – Employee Benefits

220 Social Security Contributions	603.29	31,932.07		32,535.36
230 PSERS Retirement Contributions	2,100.08	122,529.49		124,629.57
250 Unemployment Compensation	419.17	1,937.79		2,356.96
260 Workers' Compensation	26.95	3,719.02		3,745.97
270 Group Insurance – Self-Insurance	37,108.32	167,801.16		204,909.48
Total Personnel Services – Employee Benefits	\$40,257.81	\$327,919.53		\$368,177.34
Total 2240 Computer-Assisted Instruction Support Services	\$48,385.06	\$754,686.15		\$803,071.21

General Fund (10)

	<u>Elementary</u>	<u>Secondary</u>	<u>Federal</u>	<u>Total</u>
2250 School Library Services				
100 Personnel Services – Salaries				
100 Personnel Services – Salaries	253,894.76	96,199.60		350,094.36
Total Personnel Services – Salaries	\$253,894.76	\$96,199.60		\$350,094.36
200 Personnel Services – Employee Benefits				
220 Social Security Contributions	19,236.93	6,986.63		26,223.56
230 PSERS Retirement Contributions	65,563.23	24,513.42		90,076.65
250 Unemployment Compensation	855.87	466.51		1,322.38
260 Workers' Compensation	2,233.92	851.70		3,085.62
270 Group Insurance – Self-Insurance	56,456.75	64,760.89		121,217.64
Total Personnel Services – Employee Benefits	\$144,346.70	\$97,579.15		\$241,925.85
600 Supplies				
610 General Supplies	449.18	742.28		1,191.46
640 Books and Periodicals	7,677.22	2,009.71		9,686.93
650 Supplies & Fees – Technology Related	10,764.46	1,653.64		12,418.10
Total Supplies	\$18,890.86	\$4,405.63		\$23,296.49
800 Other Objects				
810 Dues and Fees		5,175.00		5,175.00
Total Other Objects		\$5,175.00		\$5,175.00
Total 2250 School Library Services	\$417,132.32	\$203,359.38		\$620,491.70

General Fund (10)

2260 Instruction and Curriculum Development Services

	<u>Elementary</u>	<u>Secondary</u>	<u>Federal</u>	<u>Total</u>
100 Personnel Services – Salaries				
100 Personnel Services – Salaries		298,177.39	54,269.97	352,447.36
Total Personnel Services – Salaries		\$298,177.39	\$54,269.97	\$352,447.36
200 Personnel Services – Employee Benefits				
220 Social Security Contributions		19,571.04	3,965.44	23,536.48
230 PSERS Retirement Contributions		72,769.64	13,884.52	86,654.16
250 Unemployment Compensation		1,648.16	75.99	1,724.15
260 Workers' Compensation		2,527.76	490.54	3,018.30
270 Group Insurance – Self-Insurance		98,122.18	21,233.03	119,355.21
Total Personnel Services – Employee Benefits		\$194,638.78	\$39,649.52	\$234,288.30
300 Purchased Professional and Technical Services				
330 Other Professional Services		7,300.00		7,300.00
Total Purchased Professional and Technical Services		\$7,300.00		\$7,300.00
500 Other Purchased Services				
580 Travel		4,498.03		4,498.03
Total Other Purchased Services		\$4,498.03		\$4,498.03
600 Supplies				
610 General Supplies	27,766.33			27,766.33
640 Books and Periodicals		293,978.05		293,978.05
Total Supplies	\$27,766.33	\$293,978.05		\$321,744.38
Total 2260 Instruction and Curriculum Development Services	\$27,766.33	\$798,592.25	\$93,919.49	\$920,278.07

General Fund (10)

	<u>Elementary</u>	<u>Secondary</u>	<u>Federal</u>	<u>Total</u>
2270 Instructional Staff Professional Development Services				
100 Personnel Services – Salaries				
100 Personnel Services – Salaries			64,603.50	64,603.50
Total Personnel Services – Salaries			\$64,603.50	\$64,603.50
200 Personnel Services – Employee Benefits				
220 Social Security Contributions			4,905.53	4,905.53
230 PSERS Retirement Contributions			16,693.54	16,693.54
250 Unemployment Compensation		241.45	43.85	285.30
260 Workers' Compensation		(7.49)	564.84	557.35
Total Personnel Services – Employee Benefits		\$233.96	\$22,207.76	\$22,441.72
300 Purchased Professional and Technical Services				
322 Professional Educational Services – Ius			4,929.61	4,929.61
324 Professional Educational Services – Employee Training and Development Services			71,091.87	71,091.87
390 Other Purchased Professional and Technical Services			4,643.05	4,643.05
Total Purchased Professional and Technical Services			\$80,664.53	\$80,664.53
600 Supplies				
610 General Supplies			7,873.42	7,873.42
Total Supplies			\$7,873.42	\$7,873.42
Total 2270 Instructional Staff Professional Development Services		\$233.96	\$175,349.21	\$175,583.17

LEA : 124151902 Coatesville Area SD

Printed 2/9/2018 1:26:23 PM

General Fund (10)

	<u>Elementary</u>	<u>Secondary</u>	<u>Federal</u>	<u>Total</u>
2300 Support Services – Administration				
100 Personnel Services – Salaries				
100 Personnel Services – Salaries	1,464,417.14	1,654,928.87		3,707,887.21
Total Personnel Services – Salaries	\$1,464,417.14	\$1,654,928.87		\$3,707,887.21
200 Personnel Services – Employee Benefits				
220 Social Security Contributions	109,085.21	122,132.16		269,874.27
230 PSERS Retirement Contributions	363,112.76	405,848.45		919,415.06
250 Unemployment Compensation	4,828.26	5,342.51		11,840.52
260 Workers' Compensation	12,892.08	14,576.94		32,669.70
270 Group Insurance – Self-Insurance	301,975.60	407,348.60		822,173.47
Total Personnel Services – Employee Benefits	\$791,893.91	\$955,248.66		\$2,055,973.02
300 Purchased Professional and Technical Services				
324 Professional Educational Services – Employee Training and Development Services				329.00
330 Other Professional Services	95,459.12	215,622.54		1,344,415.41
Total Purchased Professional and Technical Services	\$95,459.12	\$215,622.54		\$1,344,744.41
400 Purchased Property Services				
440 Rentals				2,355.57
Total Purchased Property Services				\$2,355.57
500 Other Purchased Services				
520 Insurance – General				150.00
530 Communications				6,917.46
549 Other Advertising/Public Relations				1,044.92
580 Travel	434.52			605.53
Total Other Purchased Services	\$434.52			\$8,717.91
600 Supplies				
610 General Supplies	3,249.63	7,543.64		48,798.45
630 Food	343.53	2,246.62		7,764.39
640 Books and Periodicals	143.69	17,325.11		17,497.50
Total Supplies	\$3,736.85	\$27,115.37		\$74,060.34
700 Property				
750 Equipment – Original and Additional	1,080.02	5,515.27		6,595.29
Total Property	\$1,080.02	\$5,515.27		\$6,595.29
800 Other Objects				
810 Dues and Fees	2,522.80	2,447.24		420,717.92
890 Miscellaneous Expenditures	810.23			810.23
Total Other Objects	\$3,333.03	\$2,447.24		\$421,528.15
Total 2300 Support Services – Administration	\$2,360,354.59	\$2,860,877.95		\$7,621,861.90

General Fund (10)

2310 Board Services

Elementary

Secondary

Federal

Total

100 Personnel Services – Salaries

100 Personnel Services – Salaries 63,967.10

Total Personnel Services – Salaries \$63,967.10

200 Personnel Services – Employee Benefits

220 Social Security Contributions 4,830.90

230 PSERS Retirement Contributions 16,371.48

250 Unemployment Compensation 76.01

260 Workers' Compensation 578.16

270 Group Insurance – Self-Insurance 18,844.65

Total Personnel Services – Employee Benefits \$40,701.20

300 Purchased Professional and Technical Services

330 Other Professional Services 84,689.07

Total Purchased Professional and Technical Services \$84,689.07

500 Other Purchased Services

520 Insurance – General 150.00

549 Other Advertising/Public Relations 1,044.92

580 Travel 159.77

Total Other Purchased Services \$1,354.69

600 Supplies

610 General Supplies 962.47

630 Food 1,924.65

Total Supplies \$2,887.12

800 Other Objects

810 Dues and Fees 33,143.00

Total Other Objects \$33,143.00

Total 2310 Board Services \$226,742.18

General Fund (10)

	<u>Elementary</u>	<u>Secondary</u>	<u>Federal</u>	<u>Total</u>
2330 Tax Assessment and Collection Services				
300 <u>Purchased Professional and Technical Services</u>				
330 Other Professional Services				103,844.78
Total Purchased Professional and Technical Services				\$103,844.78
500 <u>Other Purchased Services</u>				
530 Communications				6,917.46
Total Other Purchased Services				\$6,917.46
800 <u>Other Objects</u>				
810 Dues and Fees				381,439.88
Total Other Objects				\$381,439.88
Total 2330 Tax Assessment and Collection Services				\$492,202.12

General Fund (10)

2350 Legal and Accounting Services

Elementary

Secondary

Federal

Total

100 Personnel Services – Salaries

100 Personnel Services – Salaries

115,596.60

Total Personnel Services – Salaries

\$115,596.60

200 Personnel Services – Employee Benefits

220 Social Security Contributions

8,816.65

230 PSERS Retirement Contributions

29,000.57

250 Unemployment Compensation

205.85

260 Workers' Compensation

1,045.07

270 Group Insurance – Self-Insurance

14,084.20

Total Personnel Services – Employee Benefits

\$53,152.34

300 Purchased Professional and Technical Services

324 Professional Educational Services – Employee Training and Development Services

329.00

330 Other Professional Services

785,476.55

Total Purchased Professional and Technical Services

\$785,805.55

500 Other Purchased Services

580 Travel

11.24

Total Other Purchased Services

\$11.24

600 Supplies

610 General Supplies

5,178.87

Total Supplies

\$5,178.87

800 Other Objects

810 Dues and Fees

1,165.00

Total Other Objects

\$1,165.00

Total 2350 Legal and Accounting Services

\$960,909.60

General Fund (10)

2360 Office of the Superintendent / Executive Director Services

Elementary

Secondary

Federal

Total

100 Personnel Services – Salaries

100 Personnel Services – Salaries

370,344.59

Total Personnel Services – Salaries

\$370,344.59

200 Personnel Services – Employee Benefits

220 Social Security Contributions

22,280.98

230 PSERS Retirement Contributions

95,637.56

250 Unemployment Compensation

892.50

260 Workers' Compensation

3,281.39

270 Group Insurance – Self-Insurance

67,126.29

Total Personnel Services – Employee Benefits

\$189,218.72

300 Purchased Professional and Technical Services

330 Other Professional Services

59,323.35

Total Purchased Professional and Technical Services

\$59,323.35

400 Purchased Property Services

440 Rentals

2,355.57

Total Purchased Property Services

\$2,355.57

600 Supplies

610 General Supplies

31,863.84

630 Food

3,249.59

640 Books and Periodicals

28.70

Total Supplies

\$35,142.13

Total 2360 Office of the Superintendent / Executive Director Services

\$656,384.36

General Fund (10)

	<u>Elementary</u>	<u>Secondary</u>	<u>Federal</u>	<u>Total</u>
2380 Office of the Principal Services				
100 Personnel Services – Salaries				
100 Personnel Services – Salaries	1,464,417.14	1,654,928.87		3,119,346.01
Total Personnel Services – Salaries	\$1,464,417.14	\$1,654,928.87		\$3,119,346.01
200 Personnel Services – Employee Benefits				
220 Social Security Contributions	109,085.21	122,132.16		231,217.37
230 PSERS Retirement Contributions	363,112.76	405,848.45		768,961.21
250 Unemployment Compensation	4,828.26	5,342.51		10,170.77
260 Workers' Compensation	12,892.08	14,576.94		27,469.02
270 Group Insurance – Self-Insurance	301,975.60	407,348.60		709,324.20
Total Personnel Services – Employee Benefits	\$791,893.91	\$955,248.66		\$1,747,142.57
300 Purchased Professional and Technical Services				
330 Other Professional Services	95,459.12	215,622.54		311,081.66
Total Purchased Professional and Technical Services	\$95,459.12	\$215,622.54		\$311,081.66
500 Other Purchased Services				
580 Travel	434.52			434.52
Total Other Purchased Services	\$434.52			\$434.52
600 Supplies				
610 General Supplies	3,249.63	7,543.64		10,793.27
630 Food	343.53	2,246.62		2,590.15
640 Books and Periodicals	143.69	17,325.11		17,468.80
Total Supplies	\$3,736.85	\$27,115.37		\$30,852.22
700 Property				
750 Equipment – Original and Additional	1,080.02	5,515.27		6,595.29
Total Property	\$1,080.02	\$5,515.27		\$6,595.29
800 Other Objects				
810 Dues and Fees	2,522.80	2,447.24		4,970.04
890 Miscellaneous Expenditures	810.23			810.23
Total Other Objects	\$3,333.03	\$2,447.24		\$5,780.27
Total 2380 Office of the Principal Services	\$2,360,354.59	\$2,860,877.95		\$5,221,232.54

General Fund (10)

	<u>Elementary</u>	<u>Secondary</u>	<u>Federal</u>	<u>Total</u>
2390 Other Administration Services				
100 Personnel Services – Salaries				
100 Personnel Services – Salaries				38,632.91
Total Personnel Services – Salaries				\$38,632.91
200 Personnel Services – Employee Benefits				
220 Social Security Contributions				2,728.37
230 PSERS Retirement Contributions				9,444.24
250 Unemployment Compensation				495.39
260 Workers' Compensation				296.06
270 Group Insurance – Self-Insurance				12,794.13
Total Personnel Services – Employee Benefits				\$25,758.19
Total 2390 Other Administration Services				\$64,391.10

General Fund (10)

	<u>Elementary</u>	<u>Secondary</u>	<u>Federal</u>	<u>Total</u>
2400 Support Services – Pupil Health				
100 Personnel Services – Salaries				
100 Personnel Services – Salaries				586,492.59
Total Personnel Services – Salaries				\$586,492.59
200 Personnel Services – Employee Benefits				
220 Social Security Contributions				43,740.66
230 PSERS Retirement Contributions				151,459.36
250 Unemployment Compensation				2,156.27
260 Workers' Compensation				5,158.12
270 Group Insurance – Self-Insurance				175,417.38
Total Personnel Services – Employee Benefits				\$377,931.79
300 Purchased Professional and Technical Services				
322 Professional Educational Services – lus				287.28
324 Professional Educational Services – Employee Training and Development Services				3,500.00
330 Other Professional Services				109,869.51
Total Purchased Professional and Technical Services				\$113,656.79
400 Purchased Property Services				
430 Repairs and Maintenance Services				2,720.49
Total Purchased Property Services				\$2,720.49
600 Supplies				
610 General Supplies				13,447.00
Total Supplies				\$13,447.00
Total 2400 Support Services – Pupil Health				\$1,094,248.66

General Fund (10)

2420 Medical Services

	<u>Elementary</u>	<u>Secondary</u>	<u>Federal</u>	<u>Total</u>
100 <u>Personnel Services – Salaries</u>				
100 Personnel Services – Salaries				586,492.59
Total Personnel Services – Salaries				\$586,492.59
200 <u>Personnel Services – Employee Benefits</u>				
220 Social Security Contributions				43,740.66
230 PSERS Retirement Contributions				151,459.36
250 Unemployment Compensation				2,156.27
260 Workers' Compensation				5,158.12
270 Group Insurance – Self-Insurance				175,417.38
Total Personnel Services – Employee Benefits				\$377,931.79
300 <u>Purchased Professional and Technical Services</u>				
322 Professional Educational Services – lus				287.28
324 Professional Educational Services – Employee Training and Development Services				3,500.00
330 Other Professional Services				70,214.86
Total Purchased Professional and Technical Services				\$74,002.14
400 <u>Purchased Property Services</u>				
430 Repairs and Maintenance Services				2,720.49
Total Purchased Property Services				\$2,720.49
600 <u>Supplies</u>				
610 General Supplies				13,447.00
Total Supplies				\$13,447.00
Total 2420 Medical Services				\$1,054,594.01

LEA : 124151902 Coatesville Area SD

Printed 2/9/2018 1:26:23 PM

General Fund (10)

2430 Dental Services

Elementary

Secondary

Federal

Total

300 Purchased Professional and Technical Services

330 Other Professional Services

39,654.65

Total Purchased Professional and Technical Services

\$39,654.65

Total 2430 Dental Services

\$39,654.65

General Fund (10)

	<u>Elementary</u>	<u>Secondary</u>	<u>Federal</u>	<u>Total</u>
2500 Support Services – Business				
100 Personnel Services – Salaries				
100 Personnel Services – Salaries				582,569.87
Total Personnel Services – Salaries				\$582,569.87
200 Personnel Services – Employee Benefits				
220 Social Security Contributions				40,360.41
230 PSERS Retirement Contributions				144,469.09
250 Unemployment Compensation				2,204.64
260 Workers' Compensation				5,095.72
270 Group Insurance – Self-Insurance				191,171.45
Total Personnel Services – Employee Benefits				\$383,301.31
300 Purchased Professional and Technical Services				
330 Other Professional Services				27,821.13
Total Purchased Professional and Technical Services				\$27,821.13
400 Purchased Property Services				
440 Rentals				10,868.46
Total Purchased Property Services				\$10,868.46
500 Other Purchased Services				
530 Communications				80,219.25
541 Advertising Related to Federal Grant Awards				3,321.26
Total Other Purchased Services				\$83,540.51
600 Supplies				
610 General Supplies				9,178.42
Total Supplies				\$9,178.42
800 Other Objects				
810 Dues and Fees				4,335.18
Total Other Objects				\$4,335.18
Total 2500 Support Services – Business				\$1,101,614.88

General Fund (10)

2510 Fiscal Services

Elementary

Secondary

Federal

Total

100 Personnel Services – Salaries

100 Personnel Services – Salaries 582,569.87

Total Personnel Services – Salaries \$582,569.87

200 Personnel Services – Employee Benefits

220 Social Security Contributions 40,360.41

230 PSERS Retirement Contributions 144,469.09

250 Unemployment Compensation 2,204.64

260 Workers' Compensation 5,095.72

270 Group Insurance – Self-Insurance 191,171.45

Total Personnel Services – Employee Benefits \$383,301.31

300 Purchased Professional and Technical Services

330 Other Professional Services 27,821.13

Total Purchased Professional and Technical Services \$27,821.13

400 Purchased Property Services

440 Rentals 10,868.46

Total Purchased Property Services \$10,868.46

500 Other Purchased Services

530 Communications 80,219.25

541 Advertising Related to Federal Grant Awards 3,321.26

Total Other Purchased Services \$83,540.51

600 Supplies

610 General Supplies 9,178.42

Total Supplies \$9,178.42

800 Other Objects

810 Dues and Fees 4,335.18

Total Other Objects \$4,335.18

Total 2510 Fiscal Services \$1,101,614.88

General Fund (10)

2511 Supervision of Fiscal Services - Head of Component

Elementary

Secondary

Federal

Total

100 Personnel Services – Salaries

100 Personnel Services – Salaries

184,900.00

Total Personnel Services – Salaries

\$184,900.00

200 Personnel Services – Employee Benefits

220 Social Security Contributions

10,449.74

230 PSERS Retirement Contributions

44,611.76

250 Unemployment Compensation

456.34

260 Workers' Compensation

1,629.25

270 Group Insurance – Self-Insurance

25,926.34

Total Personnel Services – Employee Benefits

\$83,073.43

600 Supplies

610 General Supplies

2,009.23

Total Supplies

\$2,009.23

800 Other Objects

810 Dues and Fees

50.00

Total Other Objects

\$50.00

Total 2511 Supervision of Fiscal Services - Head of Component

\$270,032.66

General Fund (10)

2513 Receiving and Disbursing Funds Services

Elementary

Secondary

Federal

Total

100 Personnel Services – Salaries

100 Personnel Services – Salaries 269,444.35

Total Personnel Services – Salaries \$269,444.35

200 Personnel Services – Employee Benefits

220 Social Security Contributions 20,386.53

230 PSERS Retirement Contributions 68,207.36

250 Unemployment Compensation 1,271.59

260 Workers' Compensation 2,339.52

270 Group Insurance – Self-Insurance 94,298.51

Total Personnel Services – Employee Benefits \$186,503.51

300 Purchased Professional and Technical Services

330 Other Professional Services 27,821.13

Total Purchased Professional and Technical Services \$27,821.13

400 Purchased Property Services

440 Rentals 10,868.46

Total Purchased Property Services \$10,868.46

500 Other Purchased Services

530 Communications 80,219.25

541 Advertising Related to Federal Grant Awards 3,321.26

Total Other Purchased Services \$83,540.51

600 Supplies

610 General Supplies 6,507.94

Total Supplies \$6,507.94

800 Other Objects

810 Dues and Fees 4,285.18

Total Other Objects \$4,285.18

Total 2513 Receiving and Disbursing Funds Services \$588,971.08

General Fund (10)

2514 Payroll Services

Elementary

Secondary

Federal

Total

100 Personnel Services – Salaries

100 Personnel Services – Salaries

128,225.52

Total Personnel Services – Salaries

\$128,225.52

200 Personnel Services – Employee Benefits

220 Social Security Contributions

9,524.14

230 PSERS Retirement Contributions

31,649.97

250 Unemployment Compensation

476.71

260 Workers' Compensation

1,126.95

270 Group Insurance – Self-Insurance

70,946.60

Total Personnel Services – Employee Benefits

\$113,724.37

600 Supplies

610 General Supplies

661.25

Total Supplies

\$661.25

Total 2514 Payroll Services

\$242,611.14

General Fund (10)

2600 Operation and Maintenance of Plant Services

Elementary

Secondary

Federal

Total

100 Personnel Services – Salaries

100 Personnel Services – Salaries 3,277,647.06

Total Personnel Services – Salaries \$3,277,647.06

200 Personnel Services – Employee Benefits

220 Social Security Contributions 244,639.33

230 PSERS Retirement Contributions 838,252.20

250 Unemployment Compensation 13,963.87

260 Workers' Compensation 28,674.47

270 Group Insurance – Self-Insurance 1,414,110.84

Total Personnel Services – Employee Benefits \$2,539,640.71

300 Purchased Professional and Technical Services

324 Professional Educational Services – Employee Training and Development Services 40.00

330 Other Professional Services 156,568.19

350 Security / Safety Services 76,882.62

390 Other Purchased Professional and Technical Services 18,642.67

Total Purchased Professional and Technical Services \$252,133.48

400 Purchased Property Services

410 Cleaning Services 139,012.17

420 Utility Services 1,597,435.71

430 Repairs and Maintenance Services 250,661.97

440 Rentals 48,543.45

460 Extermination Services 9,934.38

Total Purchased Property Services \$2,045,587.68

500 Other Purchased Services

521 Fire Insurance 135,202.00

522 Automotive Liability Insurance 17,463.00

523 General Property and Liability Insurance 79,447.00

529 Other Insurance 19,997.00

580 Travel 89.18

Total Other Purchased Services \$252,198.18

600 Supplies

610 General Supplies 351,972.54 351,972.54

620 Energy 432,662.81

Total Supplies \$351,972.54 \$784,635.35

700 Property

750 Equipment – Original and Additional 21,440.56

760 Equipment – Replacement 51,909.24

Total Property \$73,349.80

800 Other Objects

810 Dues and Fees 490.00

Total Other Objects \$490.00

Total 2600 Operation and Maintenance of Plant Services

\$351,972.54

\$9,225,682.26

General Fund (10)

	<u>Elementary</u>	<u>Secondary</u>	<u>Federal</u>	<u>Total</u>
2610 Supervision of Operation and Maintenance of Plant Services				
100 <u>Personnel Services – Salaries</u>				
100 Personnel Services – Salaries				45,498.23
Total Personnel Services – Salaries				\$45,498.23
200 <u>Personnel Services – Employee Benefits</u>				
220 Social Security Contributions				3,427.96
230 PSERS Retirement Contributions				8,754.40
250 Unemployment Compensation				360.12
260 Workers' Compensation				379.72
270 Group Insurance – Self-Insurance				15,665.26
Total Personnel Services – Employee Benefits				\$28,587.46
300 <u>Purchased Professional and Technical Services</u>				
324 Professional Educational Services – Employee Training and Development Services				40.00
330 Other Professional Services				152,139.32
Total Purchased Professional and Technical Services				\$152,179.32
400 <u>Purchased Property Services</u>				
440 Rentals				1,712.67
Total Purchased Property Services				\$1,712.67
Total 2610 Supervision of Operation and Maintenance of Plant Services				\$227,977.68

General Fund (10)

2611 Supervision of Operation and Maintenance of Plant Services – Head of Component

Elementary Secondary Federal Total

100	<u>Personnel Services – Salaries</u>				
	100 Personnel Services – Salaries				45,498.23
	Total Personnel Services – Salaries				\$45,498.23
200	<u>Personnel Services – Employee Benefits</u>				
	220 Social Security Contributions				3,427.96
	230 PSERS Retirement Contributions				8,754.40
	250 Unemployment Compensation				360.12
	260 Workers' Compensation				379.72
	270 Group Insurance – Self-Insurance				15,665.26
	Total Personnel Services – Employee Benefits				\$28,587.46
300	<u>Purchased Professional and Technical Services</u>				
	324 Professional Educational Services – Employee Training and Development Services				40.00
	330 Other Professional Services				152,139.32
	Total Purchased Professional and Technical Services				\$152,179.32
400	<u>Purchased Property Services</u>				
	440 Rentals				1,712.67
	Total Purchased Property Services				\$1,712.67
	Total 2611 Supervision of Operation and Maintenance of Plant Services – Head of Component				\$227,977.68

General Fund (10)

	<u>Elementary</u>	<u>Secondary</u>	<u>Federal</u>	<u>Total</u>
2620 Operation of Buildings Services				
100 Personnel Services – Salaries				
100 Personnel Services – Salaries				2,907,645.68
Total Personnel Services – Salaries				\$2,907,645.68
200 Personnel Services – Employee Benefits				
220 Social Security Contributions				217,181.06
230 PSERS Retirement Contributions				746,908.07
250 Unemployment Compensation				12,394.57
260 Workers' Compensation				25,436.38
270 Group Insurance – Self-Insurance				1,225,040.83
Total Personnel Services – Employee Benefits				\$2,226,960.91
300 Purchased Professional and Technical Services				
390 Other Purchased Professional and Technical Services				18,642.67
Total Purchased Professional and Technical Services				\$18,642.67
400 Purchased Property Services				
410 Cleaning Services				139,012.17
420 Utility Services				1,597,435.71
430 Repairs and Maintenance Services				250,239.47
440 Rentals				46,830.78
460 Extermination Services				9,934.38
Total Purchased Property Services				\$2,043,452.51
500 Other Purchased Services				
521 Fire Insurance				135,202.00
522 Automotive Liability Insurance				17,463.00
523 General Property and Liability Insurance				79,447.00
529 Other Insurance				14,424.00
580 Travel				89.18
Total Other Purchased Services				\$246,625.18
600 Supplies				
610 General Supplies		351,972.54		351,972.54
620 Energy				432,662.81
Total Supplies		\$351,972.54		\$784,635.35
700 Property				
750 Equipment – Original and Additional				21,440.56
760 Equipment – Replacement				51,909.24
Total Property				\$73,349.80
800 Other Objects				
810 Dues and Fees				490.00
Total Other Objects				\$490.00
Total 2620 Operation of Buildings Services		\$351,972.54		\$8,301,802.10

LEA : 124151902 Coatesville Area SD

Printed 2/9/2018 1:26:23 PM

General Fund (10)

	<u>Elementary</u>	<u>Secondary</u>	<u>Federal</u>	<u>Total</u>
2630 Care and Upkeep of Grounds Services				
100 Personnel Services – Salaries				
100 Personnel Services – Salaries				227,035.25
Total Personnel Services – Salaries				\$227,035.25
200 Personnel Services – Employee Benefits				
220 Social Security Contributions				16,778.79
230 PSERS Retirement Contributions				58,467.54
250 Unemployment Compensation				767.57
260 Workers' Compensation				2,009.37
270 Group Insurance – Self-Insurance				112,990.08
Total Personnel Services – Employee Benefits				\$191,013.35
Total 2630 Care and Upkeep of Grounds Services				\$418,048.60

General Fund (10)

2660 Safety and Security Services

Elementary

Secondary

Federal

Total

100 Personnel Services – Salaries

100 Personnel Services – Salaries

97,467.90

Total Personnel Services – Salaries

\$97,467.90

200 Personnel Services – Employee Benefits

220 Social Security Contributions

7,251.52

230 PSERS Retirement Contributions

24,122.19

250 Unemployment Compensation

441.61

260 Workers' Compensation

849.00

270 Group Insurance – Self-Insurance

60,414.67

Total Personnel Services – Employee Benefits

\$93,078.99

300 Purchased Professional and Technical Services

330 Other Professional Services

4,428.87

350 Security / Safety Services

76,882.62

Total Purchased Professional and Technical Services

\$81,311.49

400 Purchased Property Services

430 Repairs and Maintenance Services

422.50

Total Purchased Property Services

\$422.50

500 Other Purchased Services

529 Other Insurance

5,573.00

Total Other Purchased Services

\$5,573.00

Total 2660 Safety and Security Services

\$277,853.88

General Fund (10)

2700 Student Transportation Services

100 Personnel Services – Salaries

	<u>Elementary</u>	<u>Secondary</u>	<u>Federal</u>	<u>Total</u>
100 Personnel Services – Salaries				121,766.40
Total Personnel Services – Salaries				\$121,766.40
200 Personnel Services – Employee Benefits				
220 Social Security Contributions				9,015.30
230 PSERS Retirement Contributions				31,448.25
250 Unemployment Compensation				409.81
260 Workers' Compensation				1,072.15
270 Group Insurance – Self-Insurance				45,138.60
Total Personnel Services – Employee Benefits				\$87,084.11
500 Other Purchased Services				
513 Contracted Carriers			63,171.77	8,908,428.77
516 Student Transportation Services From the IU				23,612.27
519 Student Transportation Services From Other Sources				10.00
530 Communications				6,334.00
Total Other Purchased Services			\$63,171.77	\$8,938,385.04
600 Supplies				
610 General Supplies				11,289.32
Total Supplies				\$11,289.32
800 Other Objects				
810 Dues and Fees				295.00
Total Other Objects				\$295.00
Total 2700 Student Transportation Services			\$63,171.77	\$9,158,819.87

General Fund (10)

2710 Supervision of Student Transportation Services

Elementary

Secondary

Federal

Total

100 Personnel Services – Salaries

100 Personnel Services – Salaries

121,766.40

Total Personnel Services – Salaries

\$121,766.40

200 Personnel Services – Employee Benefits

220 Social Security Contributions

9,015.30

230 PSERS Retirement Contributions

31,448.25

250 Unemployment Compensation

409.81

260 Workers' Compensation

1,072.15

270 Group Insurance – Self-Insurance

45,138.60

Total Personnel Services – Employee Benefits

\$87,084.11

500 Other Purchased Services

530 Communications

6,334.00

Total Other Purchased Services

\$6,334.00

600 Supplies

610 General Supplies

11,289.32

Total Supplies

\$11,289.32

800 Other Objects

810 Dues and Fees

295.00

Total Other Objects

\$295.00

Total 2710 Supervision of Student Transportation Services

\$226,768.83

General Fund (10)

2711 Supervision of Student Transportation Services – Head of Component

Elementary

Secondary

Federal

Total

100 Personnel Services – Salaries

100 Personnel Services – Salaries

121,766.40

Total Personnel Services – Salaries

\$121,766.40

200 Personnel Services – Employee Benefits

220 Social Security Contributions

9,015.30

230 PSERS Retirement Contributions

31,448.25

250 Unemployment Compensation

409.81

260 Workers' Compensation

1,072.15

270 Group Insurance – Self-Insurance

45,138.60

Total Personnel Services – Employee Benefits

\$87,084.11

500 Other Purchased Services

530 Communications

6,334.00

Total Other Purchased Services

\$6,334.00

600 Supplies

610 General Supplies

11,289.32

Total Supplies

\$11,289.32

800 Other Objects

810 Dues and Fees

295.00

Total Other Objects

\$295.00

Total 2711 Supervision of Student Transportation Services – Head of Component

\$226,768.83

LEA : 124151902 Coatesville Area SD

Printed 2/9/2018 1:26:23 PM

General Fund (10)

2720 Vehicle Operation Services

500 Other Purchased Services

513 Contracted Carriers

516 Student Transportation Services From the IU

519 Student Transportation Services From Other Sources

Total Other Purchased Services

Total 2720 Vehicle Operation Services

Elementary

Secondary

Federal

Total

63,171.77

7,969,783.42

23,612.27

10.00

\$63,171.77

\$7,993,405.69

\$63,171.77

\$7,993,405.69

General Fund (10)

2750 Nonpublic Transportation

Elementary

Secondary

Federal

Total

500 Other Purchased Services

513 Contracted Carriers

938,645.35

Total Other Purchased Services

\$938,645.35

Total 2750 Nonpublic Transportation

\$938,645.35

General Fund (10)

2800 Support Services – Central

Elementary Secondary Federal Total

100	<u>Personnel Services – Salaries</u>			
	100 Personnel Services – Salaries			200,559.29
Total Personnel Services – Salaries				\$200,559.29
200	<u>Personnel Services – Employee Benefits</u>			
	220 Social Security Contributions			15,155.75
	230 PSERS Retirement Contributions			49,072.32
	250 Unemployment Compensation			1,040.84
	260 Workers' Compensation			1,744.09
	270 Group Insurance – Self-Insurance			75,265.28
Total Personnel Services – Employee Benefits				\$142,278.28
300	<u>Purchased Professional and Technical Services</u>			
	324 Professional Educational Services – Employee Training and Development Services		5,500.00	15,045.20
	330 Other Professional Services			348,853.64
	340 Technical Services			608,513.24
Total Purchased Professional and Technical Services				\$5,500.00 \$972,412.08
400	<u>Purchased Property Services</u>			
	430 Repairs and Maintenance Services			1,142.56
	440 Rentals			413,741.74
Total Purchased Property Services				\$414,884.30
500	<u>Other Purchased Services</u>			
	530 Communications			201,950.02
	541 Advertising Related to Federal Grant Awards			395.00
	580 Travel			173.88
Total Other Purchased Services				\$202,518.90
600	<u>Supplies</u>			
	610 General Supplies			168,612.58
	630 Food			1.20
	640 Books and Periodicals			876.99
	650 Supplies & Fees – Technology Related			61.42
Total Supplies				\$169,552.19
700	<u>Property</u>			
	750 Equipment – Original and Additional			8,278.76
	760 Equipment – Replacement			533,165.72
Total Property				\$541,444.48
800	<u>Other Objects</u>			
	810 Dues and Fees			1,638.06
Total Other Objects				\$1,638.06
Total 2800 Support Services – Central			\$5,500.00	\$2,645,287.58

General Fund (10)

	<u>Elementary</u>	<u>Secondary</u>	<u>Federal</u>	<u>Total</u>
2810 Planning, Research, Development and Evaluation Services				
300 <u>Purchased Professional and Technical Services</u>				
324 Professional Educational Services – Employee Training and Development Services			5,500.00	5,500.00
Total Purchased Professional and Technical Services			\$5,500.00	\$5,500.00
Total 2810 Planning, Research, Development and Evaluation Services			\$5,500.00	\$5,500.00

General Fund (10)

2830 Staff Services

Elementary Secondary Federal Total

100	<u>Personnel Services – Salaries</u>				
	100 Personnel Services – Salaries				193,544.40
Total Personnel Services – Salaries					\$193,544.40
200	<u>Personnel Services – Employee Benefits</u>				
	220 Social Security Contributions				14,618.82
	230 PSERS Retirement Contributions				47,461.08
	250 Unemployment Compensation				1,040.84
	260 Workers' Compensation				1,680.68
	270 Group Insurance – Self-Insurance				62,634.86
Total Personnel Services – Employee Benefits					\$127,436.28
300	<u>Purchased Professional and Technical Services</u>				
	324 Professional Educational Services – Employee Training and Development Services				4,225.00
	330 Other Professional Services				318,179.60
Total Purchased Professional and Technical Services					\$322,404.60
400	<u>Purchased Property Services</u>				
	440 Rentals				1,615.44
Total Purchased Property Services					\$1,615.44
500	<u>Other Purchased Services</u>				
	541 Advertising Related to Federal Grant Awards				395.00
	580 Travel				113.62
Total Other Purchased Services					\$508.62
600	<u>Supplies</u>				
	610 General Supplies				2,266.64
	630 Food				1.20
	640 Books and Periodicals				876.99
Total Supplies					\$3,144.83
800	<u>Other Objects</u>				
	810 Dues and Fees				1,638.06
Total Other Objects					\$1,638.06
Total 2830 Staff Services					\$650,292.23

General Fund (10)

2832 Recruitment and Placement Services

Elementary

Secondary

Federal

Total

100 Personnel Services – Salaries

100 Personnel Services – Salaries 41,622.62

Total Personnel Services – Salaries \$41,622.62

200 Personnel Services – Employee Benefits

220 Social Security Contributions 3,158.13

230 PSERS Retirement Contributions 9,547.36

250 Unemployment Compensation 322.24

260 Workers' Compensation 340.46

270 Group Insurance – Self-Insurance 15,393.38

Total Personnel Services – Employee Benefits \$28,761.57

300 Purchased Professional and Technical Services

324 Professional Educational Services – Employee Training and Development Services 4,225.00

330 Other Professional Services 318,179.60

Total Purchased Professional and Technical Services \$322,404.60

400 Purchased Property Services

440 Rentals 1,615.44

Total Purchased Property Services \$1,615.44

500 Other Purchased Services

541 Advertising Related to Federal Grant Awards 395.00

580 Travel 113.62

Total Other Purchased Services \$508.62

600 Supplies

610 General Supplies 2,266.64

630 Food 1.20

640 Books and Periodicals 876.99

Total Supplies \$3,144.83

800 Other Objects

810 Dues and Fees 1,638.06

Total Other Objects \$1,638.06

Total 2832 Recruitment and Placement Services \$399,695.74

LEA : 124151902 Coatesville Area SD

Printed 2/9/2018 1:26:23 PM

General Fund (10)

2833 Staff Accounting Services

Elementary

Secondary

Federal

Total

100 Personnel Services – Salaries

100 Personnel Services – Salaries

151,921.78

Total Personnel Services – Salaries

\$151,921.78

200 Personnel Services – Employee Benefits

220 Social Security Contributions

11,460.69

230 PSERS Retirement Contributions

37,913.72

250 Unemployment Compensation

718.60

260 Workers' Compensation

1,340.22

270 Group Insurance – Self-Insurance

47,241.48

Total Personnel Services – Employee Benefits

\$98,674.71

Total 2833 Staff Accounting Services

\$250,596.49

General Fund (10)

2840 Data Processing Services

Elementary Secondary Federal Total

300 Purchased Professional and Technical Services

324 Professional Educational Services – Employee Training and Development Services				5,320.20
330 Other Professional Services				30,674.04
340 Technical Services				608,513.24

Total Purchased Professional and Technical Services **\$644,507.48**

400 Purchased Property Services

430 Repairs and Maintenance Services				1,142.56
440 Rentals				412,126.30

Total Purchased Property Services **\$413,268.86**

500 Other Purchased Services

530 Communications				201,950.02
580 Travel				60.26

Total Other Purchased Services **\$202,010.28**

600 Supplies

610 General Supplies				166,345.94
650 Supplies & Fees – Technology Related				61.42

Total Supplies **\$166,407.36**

700 Property

750 Equipment – Original and Additional				8,278.76
760 Equipment – Replacement				533,165.72

Total Property **\$541,444.48**

Total 2840 Data Processing Services **\$1,967,638.46**

General Fund (10)

2850 State and Federal Agency Liaison Services

Elementary

Secondary

Federal

Total

100 Personnel Services – Salaries

100 Personnel Services – Salaries

7,014.89

Total Personnel Services – Salaries

\$7,014.89

200 Personnel Services – Employee Benefits

220 Social Security Contributions

536.93

230 PSERS Retirement Contributions

1,611.24

260 Workers’ Compensation

63.41

270 Group Insurance – Self-Insurance

12,630.42

Total Personnel Services – Employee Benefits

\$14,842.00

Total 2850 State and Federal Agency Liaison Services

\$21,856.89

LEA : 124151902 Coatesville Area SD

Printed 2/9/2018 1:26:23 PM

General Fund (10)

	<u>Elementary</u>	<u>Secondary</u>	<u>Federal</u>	<u>Total</u>
2900 Other Support Services				
300 <u>Purchased Professional and Technical Services</u>				
330 Other Professional Services				5,873.22
Total Purchased Professional and Technical Services				\$5,873.22
500 <u>Other Purchased Services</u>				
595 IU Payments By Withholding				49,973.23
Total Other Purchased Services				\$49,973.23
Total 2900 Other Support Services				\$55,846.45

General Fund (10)

2910 Support Services Not Listed Elsewhere In the 2000 Series

Elementary

Secondary

Federal

Total

300 Purchased Professional and Technical Services

330 Other Professional Services

5,873.22

Total Purchased Professional and Technical Services

\$5,873.22

500 Other Purchased Services

595 IU Payments By Withholding

49,973.23

Total Other Purchased Services

\$49,973.23

Total 2910 Support Services Not Listed Elsewhere In the 2000 Series

\$55,846.45

General Fund (10)

3000 Operation of Non-Instructional Services	<u>Total</u>
100 Personnel Services – Salaries	
100 Personnel Services – Salaries	471,268.16
Total Personnel Services – Salaries	\$471,268.16
200 Personnel Services – Employee Benefits	
220 Social Security Contributions	35,768.48
230 PSERS Retirement Contributions	95,472.00
250 Unemployment Compensation	2,733.17
260 Workers’ Compensation	4,114.83
270 Group Insurance – Self-Insurance	44,173.14
Total Personnel Services – Employee Benefits	\$182,261.62
300 Purchased Professional and Technical Services	
330 Other Professional Services	237,498.92
Total Purchased Professional and Technical Services	\$237,498.92
400 Purchased Property Services	
430 Repairs and Maintenance Services	37,647.70
Total Purchased Property Services	\$37,647.70
500 Other Purchased Services	
510 Student Transportation Services	119,766.02
520 Insurance – General	11,219.00
Total Other Purchased Services	\$130,985.02
600 Supplies	
610 General Supplies	49,310.42
Total Supplies	\$49,310.42
700 Property	
750 Equipment – Original and Additional	4,518.60
Total Property	\$4,518.60
800 Other Objects	
810 Dues and Fees	15,418.38
Total Other Objects	\$15,418.38
Total 3000 Operation of Non-Instructional Services	\$1,128,908.82

General Fund (10)

3200 Student Activities

Elementary Secondary Federal Total

100 Personnel Services – Salaries

100 Personnel Services – Salaries 471,268.16

Total Personnel Services – Salaries \$471,268.16

200 Personnel Services – Employee Benefits

220 Social Security Contributions 35,768.48

230 PSERS Retirement Contributions 95,472.00

250 Unemployment Compensation 2,733.17

260 Workers' Compensation 4,114.83

270 Group Insurance – Self-Insurance 44,173.14

Total Personnel Services – Employee Benefits \$182,261.62

300 Purchased Professional and Technical Services

330 Other Professional Services 237,498.92

Total Purchased Professional and Technical Services \$237,498.92

400 Purchased Property Services

430 Repairs and Maintenance Services 37,647.70

Total Purchased Property Services \$37,647.70

500 Other Purchased Services

510 Student Transportation Services 119,766.02

520 Insurance – General 11,219.00

Total Other Purchased Services \$130,985.02

600 Supplies

610 General Supplies 41,540.55

Total Supplies \$41,540.55

700 Property

750 Equipment – Original and Additional 4,518.60

Total Property \$4,518.60

800 Other Objects

810 Dues and Fees 15,418.38

Total Other Objects \$15,418.38

Total 3200 Student Activities \$1,121,138.95

LEA : 124151902 Coatesville Area SD

Printed 2/9/2018 1:26:27 PM

General Fund (10)

3300 Community Services

600 Supplies
610 General Supplies

Elementary Secondary Federal Total

Total Supplies			7,769.87	7,769.87
Total 3300 Community Services			\$7,769.87	\$7,769.87

General Fund (10)

5000 Other Expenditures and Financing Uses

Total

800 Other Objects

830 Interest 8,189,622.26

880 Refunds of Prior Years' Receipts 103.33

Total Other Objects \$8,189,725.59

900 Other Uses of Funds

910 Redemption of Principal 6,960,000.00

Total Other Uses of Funds \$6,960,000.00

Total 5000 Other Expenditures and Financing Uses \$15,149,725.59

LEA : 124151902 Coatesville Area SD

Printed 2/9/2018 1:26:29 PM

General Fund (10)

	<u>Elementary</u>	<u>Secondary</u>	<u>Federal</u>	<u>Total</u>
5100 Debt Service / Other Expenditures and Financing Uses				
800 Other Objects				
830 Interest				8,189,622.26
880 Refunds of Prior Years' Receipts				103.33
Total Other Objects				\$8,189,725.59
900 Other Uses of Funds				
910 Redemption of Principal				6,960,000.00
Total Other Uses of Funds				\$6,960,000.00
Total 5100 Debt Service / Other Expenditures and Financing Uses				\$15,149,725.59

LEA : 124151902 Coatesville Area SD

Printed 2/9/2018 1:26:29 PM

General Fund (10)

	<u>Elementary</u>	<u>Secondary</u>	<u>Federal</u>	<u>Total</u>
5110 Debt Service				
800 Other Objects				
830 Interest				8,189,622.26
Total Other Objects				\$8,189,622.26
900 Other Uses of Funds				
910 Redemption of Principal				6,960,000.00
Total Other Uses of Funds				\$6,960,000.00
Total 5110 Debt Service				\$15,149,622.26

LEA : 124151902 Coatesville Area SD

Printed 2/9/2018 1:26:29 PM

General Fund (10)

	<u>Elementary</u>	<u>Secondary</u>	<u>Federal</u>	<u>Total</u>
5130 Refund of Prior Year Revenues / Receipts				
800 <u>Other Objects</u>				
880 Refunds of Prior Years' Receipts				103.33
Total Other Objects				\$103.33
Total 5130 Refund of Prior Year Revenues / Receipts				\$103.33

LEA : 124151902 Coatesville Area SD

Printed 2/9/2018 1:26:26 PM

Other Capital Projects Fund (39)

2000 Support Services

800 Other Objects

810 Dues and Fees

Total Other Objects

Total 2000 Support Services

Total

75.71

\$75.71

\$75.71

LEA : 124151902 Coatesville Area SD

Printed 2/9/2018 1:26:26 PM

Other Capital Projects Fund (39)

2500 Support Services – Business

Elementary

Secondary

Federal

Total

800 Other Objects

810 Dues and Fees

75.71

Total Other Objects

\$75.71

Total 2500 Support Services – Business

\$75.71

LEA : 124151902 Coatesville Area SD

Printed 2/9/2018 1:26:26 PM

Other Capital Projects Fund (39)

2510 Fiscal Services

Elementary

Secondary

Federal

Total

800 Other Objects

810 Dues and Fees

75.71

Total Other Objects

\$75.71

Total 2510 Fiscal Services

\$75.71

LEA : 124151902 Coatesville Area SD

Printed 2/9/2018 1:26:26 PM

Other Capital Projects Fund (39)

2513 Receiving and Disbursing Funds Services

Elementary

Secondary

Federal

Total

800 Other Objects

810 Dues and Fees

75.71

Total Other Objects

\$75.71

Total 2513 Receiving and Disbursing Funds Services

\$75.71

Other Capital Projects Fund (39)

4000 Facilities Acquisition, Construction and Improvement Services

Total

300 Purchased Professional and Technical Services

330 Other Professional Services

123,728.17

Total Purchased Professional and Technical Services

\$123,728.17

400 Purchased Property Services

450 Construction Services

1,100,469.25

Total Purchased Property Services

\$1,100,469.25

Total 4000 Facilities Acquisition, Construction and Improvement Services

\$1,224,197.42

LEA : 124151902 Coatesville Area SD

Printed 2/9/2018 1:26:28 PM

Other Capital Projects Fund (39)

	<u>Elementary</u>	<u>Secondary</u>	<u>Federal</u>	<u>Total</u>
4600 Existing Building Improvement Services				
300 <u>Purchased Professional and Technical Services</u>				
330 Other Professional Services				123,728.17
Total Purchased Professional and Technical Services				\$123,728.17
400 <u>Purchased Property Services</u>				
450 Construction Services				1,100,469.25
Total Purchased Property Services				\$1,100,469.25
Total 4600 Existing Building Improvement Services				\$1,224,197.42

	<u>General Fund(10)</u>	<u>Public Purpose Trust(27)</u>	<u>Other Compt Approved (28)</u>	<u>Athletic / Activity(29)</u>	<u>Capital Reserve (690, 1850)(31)</u>
1000 Instruction					
1100 Regular Programs - Elementary / Secondary	67,772,995.57				
1200 Special Programs - Elementary / Secondary	33,125,905.86				
1300 Vocational Education	3,425,474.67				
1400 Other Instructional Programs - Elementary / Secondary	254,867.01				
1500 Nonpublic School Programs	24,390.07				
Total Instruction	\$104,603,633.18				
2000 Support Services					
2100 Support Services - Students	4,378,491.25				
2200 Support Services - Instructional Staff	2,519,424.15				
2300 Support Services - Administration	7,621,861.90				
2400 Support Services - Pupil Health	1,094,248.66				
2500 Support Services - Business	1,101,614.88				
2600 Operation and Maintenance of Plant Services	9,225,682.26				
2700 Student Transportation Services	9,158,819.87				
2800 Support Services - Central	2,645,287.58				
2900 Other Support Services	55,846.45				
Total Support Services	\$37,801,277.00				
3000 Operation of Non-Instructional Services					
3200 Student Activities	1,121,138.95				
3300 Community Services	7,769.87				
Total Operation of Non-Instructional Services	\$1,128,908.82				
4000 Facilities Acquisition, Construction and Improvement Services					
4600 Existing Building Improvement Services					
Total Facilities Acquisition, Construction and Improvement Services					
5000 Other Expenditures and Financing Uses					
5100 Debt Service / Other Expenditures and Financing Uses	15,149,725.59				
Total Other Expenditures and Financing Uses	\$15,149,725.59				
TOTAL ACTUAL EXPENDITURES & OTHER FINANCING USES	\$158,683,544.59				

	<u>Capital Reserve (1431)(32)</u>	<u>Other Capital Projects Fund(39)</u>	<u>Debt Service(40)</u>	<u>Permanent(90)</u>	<u>Total</u>
1000 Instruction					
1100 Regular Programs - Elementary / Secondary					67,772,995.57
1200 Special Programs - Elementary / Secondary					33,125,905.86
1300 Vocational Education					3,425,474.67
1400 Other Instructional Programs - Elementary / Secondary					254,867.01
1500 Nonpublic School Programs					24,390.07
Total Instruction					\$104,603,633.18
2000 Support Services					
2100 Support Services - Students					4,378,491.25
2200 Support Services - Instructional Staff					2,519,424.15
2300 Support Services - Administration					7,621,861.90
2400 Support Services - Pupil Health					1,094,248.66
2500 Support Services - Business		75.71			1,101,690.59
2600 Operation and Maintenance of Plant Services					9,225,682.26
2700 Student Transportation Services					9,158,819.87
2800 Support Services - Central					2,645,287.58
2900 Other Support Services					55,846.45
Total Support Services		\$75.71			\$37,801,352.71
3000 Operation of Non-Instructional Services					
3200 Student Activities					1,121,138.95
3300 Community Services					7,769.87
Total Operation of Non-Instructional Services					\$1,128,908.82
4000 Facilities Acquisition, Construction and Improvement Services					
4600 Existing Building Improvement Services			1,224,197.42		1,224,197.42
Total Facilities Acquisition, Construction and Improvement Services			\$1,224,197.42		\$1,224,197.42
5000 Other Expenditures and Financing Uses					
5100 Debt Service / Other Expenditures and Financing Uses					15,149,725.59
Total Other Expenditures and Financing Uses					\$15,149,725.59
TOTAL ACTUAL EXPENDITURES & OTHER FINANCING USES		\$1,224,273.13			\$159,907,817.72

LEA : 124151902 Coatesville Area SD

Printed 2/9/2018 1:26:35 PM

PSERS Salary Data (Salary Data should relate to the General Fund only)

Amount Description	Amount
Total Salary Base for salaries subject to PSERS withholding	47,793,798.00
Total Federally Funded salaries subject to PSERS withholding	785,100.00
	<hr/>

Title I Expenditure Data

Amount Description	Amount
Expenditures Funded with Current Title I Funds	1,438,059.00
Expenditures Funded with Carry over Title I Funds	
Total Title I Expenditure Data	<hr/> \$1,438,059.00 <hr/>

Title I ARRA Amount

Amount Description	Amount
Portion of Total Title I Expenditures funded with ARRA Title I	<hr/>

Benefits for Staff Relative to Collective Bargaining Agreements

	OBJECT	COVERED	NOT COVERED	TOTAL
10 General Fund				
	211 Medical Insurance			
	212 Dental Insurance			
	215 Eye Care Insurance			
	216 Prescription Insurance			
	271 Self-Insurance Medical Benefits	9,531,482.00		9,531,482.00
	272 Self-Insurance Dental Benefits	789,564.00		789,564.00
	275 Self-Insurance Eye Care Benefits	128,195.00		128,195.00
	276 Self-Insurance Prescription Benefits	2,941,187.00		2,941,187.00
	FUND TOTAL	\$13,390,428.00		\$13,390,428.00
50 Enterprise Fund				
	211 Medical Insurance			
	212 Dental Insurance			
	215 Eye Care Insurance			
	216 Prescription Insurance			
	271 Self-Insurance Medical Benefits	203,760.00		203,760.00
	272 Self-Insurance Dental Benefits	16,483.00		16,483.00
	275 Self-Insurance Eye Care Benefits	2,984.00		2,984.00
	276 Self-Insurance Prescription Benefits	44,872.00		44,872.00
	FUND TOTAL	\$268,099.00		\$268,099.00
60 Internal Service Fund	No Self Insurance data to report			
	211 Medical Insurance			
	212 Dental Insurance			
	215 Eye Care Insurance			
	216 Prescription Insurance			
	271 Self-Insurance Medical Benefits			
	272 Self-Insurance Dental Benefits			
	275 Self-Insurance Eye Care Benefits			
	276 Self-Insurance Prescription Benefits			
	FUND TOTAL			
Total of All Funds		\$13,658,527.00		\$13,658,527.00

LEA : 124151902 Coatesville Area SD

Printed 2/9/2018 1:26:36 PM

Function	Special Education (Prior Year)	Nonspecial Education (Prior Year)	Total (Prior Year)	Special Education (Current Year)	Nonspecial Education (Current Year)	Total (Current Year)
2120 Guidance Services	513,801.27	2,121,465.39	2,635,266.66	556,495.12	2,297,326.01	2,853,821.13
2140 Psychological Services	278,154.62	1,148,489.55	1,426,644.17	201,938.25	833,642.54	1,035,580.79
2150 Speech Pathology and Audiology Services						
2160 Social Work Services						
2260 Instruction and Curriculum Development Services	153,505.39	633,817.75	787,323.14	179,454.22	740,823.85	920,278.07
2350 Legal and Accounting Services	200,203.72	826,633.36	1,026,837.08	187,377.37	773,532.23	960,909.60
2420 Medical Services	200,204.27	826,635.61	1,026,839.88	205,645.83	848,948.18	1,054,594.01
2440 Nursing Services	1,126.70	4,652.11	5,778.81			
2700 Student Transportation Services	1,506,656.94	6,220,927.65	7,727,584.59	1,785,969.87	7,372,850.00	9,158,819.87
Total	\$2,853,652.91	\$11,782,621.42	\$14,636,274.33	\$3,116,880.66	\$12,867,122.81	\$15,984,003.47

(PRINCIPAL AMOUNTS ONLY)

ALL GOVERNMENTAL FUND TYPES

	Short-Term Borrowing	General Obligation Bonds/Notes	Authority Building Obligations	Other Long-Term Debt	Other Post-Employment Benefits (OPEB)	Compensated Absences	Net Pension Liability	Total
1. Debt at Beginning of Fiscal Year		182,763,133.00			5,199,036.00	2,026,490.14	143,960,000.00	333,948,659.14
2. Additional Debt Incurred During Year					100,654.00			100,654.00
3. Retirements and Repayments		6,960,000.00				420,026.14		7,380,026.14
4. Debt at End of Fiscal Year		175,803,133.00			5,299,690.00	1,606,464.00	143,960,000.00	326,669,287.00
5. Accreted Interest at End Of Fiscal Year								
6. Total Debt and Accreted Interest		175,803,133.00			5,299,690.00	1,606,464.00	143,960,000.00	326,669,287.00
7. Current Portion P&I - Due within 1 year		15,153,960.52						15,153,960.52
8. Interest Paid during current fiscal year		8,189,622.26						8,189,622.26

(PRINCIPAL AMOUNTS ONLY)

ALL PROPRIETARY FUND TYPES

- 1. Debt at Beginning of Fiscal Year
- 2. Additional Debt Incurred During Year
- 3. Retirements and Repayments
- 4. Debt at End of Fiscal Year
- 5. Accreted Interest at End Of Fiscal Year
- 6. Total Debt and Accreted Interest
- 7. Current Portion P&I - Due within 1 year
- 8. Interest Paid during current fiscal year

Total Principal and Interest Payments Made by Your School - All Funds

Function	Fund		Principal (910)	Principal (920)	Interest (830)	Total (Principal +Interest)	Misc Other Uses (990)
5110	10	General Fund	6,960,000.00		8,189,622.26	15,149,622.26	
5110	20	Special Revenue Funds					
5110	30	Capital Projects Funds					
5110	40	Debt Service Fund					
5110	90	Permanent Fund					
5120	10	General Fund					
5120	20	Special Revenue Funds					
5120	30	Capital Projects Funds					
5120	40	Debt Service Fund					

Total Debt Payments - Governmental Funds			\$6,960,000.00		\$8,189,622.26	\$15,149,622.26	
---	--	--	-----------------------	--	-----------------------	------------------------	--

Function	Fund		Principal (910)	Principal (920)	Interest (830)	Total (Principal +Interest)
5110	50	Enterprise Fund				
5110	60	Internal Service Fund				
5120	50	Enterprise Fund				
5120	60	Internal Service Fund				

Total Debt Payments - Proprietary Funds						
--	--	--	--	--	--	--

Bond Details
Governmental Funds

Debt Category	Debt Issue Date (MM/YYYY)	Principal Amounts Only			Debt at End of Fiscal Year	Current Portion Due Within One Year (Principal and Interest)	Interest Paid During Fiscal Year
		Debt at Beginning of Fiscal Year	Additions	Reductions / Repayments			
General Obligation Bonds/Notes – CIB	04/2014	8,750,000.00		5,000.00	8,745,000.00	346,300.00	341,375.00
General Obligation Bonds/Notes – CIB	04/2014	5,085,000.00		1,670,000.00	3,415,000.00	1,743,644.25	78,591.55
General Obligation Bonds/Notes – CIB	08/2013	19,563,133.00			19,563,133.00	1,120,000.00	870,000.00
General Obligation Bonds/Notes – CIB	07/2010	53,405,000.00		5,000.00	53,400,000.00	2,415,981.26	2,406,211.90
General Obligation Bonds/Notes – CIB	08/2009	10,465,000.00		5,270,000.00	5,195,000.00	5,285,912.50	260,874.07
General Obligation Bonds/Notes – CIB	08/2009	21,975,000.00		5,000.00	21,970,000.00	1,063,902.50	1,059,137.23
General Obligation Bonds/Notes – CIB	08/2007	63,520,000.00		5,000.00	63,515,000.00	3,178,220.01	3,173,432.51
Compensated Absences		2,026,490.14		420,026.14	1,606,464.00		
Other Post-Employment Benefits (OPEB)		5,199,036.00	100,654.00		5,299,690.00		
Net Pension Liability		143,960,000.00			143,960,000.00		
Totals for Debt Entered:		\$333,948,659.14	\$100,654.00	\$7,380,026.14	\$326,669,287.00	\$15,153,960.52	\$8,189,622.26

General Fund (10)

Section 1: Tuition/Purchased Services as Reported within Expenditure Detail

	Amount
Tuition Reported in General Fund Expenditures 1000-560	31,602,201.69
Purchased Services in General Fund Expenditures 1000-594 and 1000-597	

Section 1 Total	\$31,602,201.69
------------------------	------------------------

Section 2: Tuition Paid to Institution Types During Fiscal Year

	Tuition Paid For Nonspecial Education	Tuition Paid For Special Education	Total
1 1306 Institutions			
2 Institutionalized Children's Programs			
3 Juveniles Incarcerated in Adult Facilities			
4 Residential Treatment Facilities			
5 Other Local Education Agencies	87,352.64	84,298.09	171,650.73
6 Brick and Mortar Charter Schools	16,545,826.00	6,832,621.56	23,378,447.56
7 Cyber Charter Schools	2,144,848.30	770,225.68	2,915,073.98
8 Career and Technology Centers	2,600,984.00		2,600,984.00
9 Approved Private Schools		2,227,436.20	2,227,436.20
10 PA Chartered Schools for the Deaf and Blind			
11 Private Residential Rehabilitative Institutions	139,662.28		139,662.28
12 Juvenile Detention Centers		2,618.94	2,618.94
13 Special Program Jointures			
14 Other Tuition Not Included Elsewhere In This Section	166,328.00		166,328.00

Section 2 Total	\$21,685,001.22	\$9,917,200.47	\$31,602,201.69
------------------------	------------------------	-----------------------	------------------------

Food Service / Cafeteria Operations Fund (51)

3000 Operation of Non-Instructional Services

Total

100 Personnel Services – Salaries

100 Personnel Services – Salaries 837,954.00

Total Personnel Services – Salaries

\$837,954.00

200 Personnel Services – Employee Benefits

220 Social Security Contributions 63,115.00

230 PSERS Retirement Contributions 234,367.00

250 Unemployment Compensation 4,175.00

260 Workers' Compensation 8,372.00

270 Group Insurance – Self-Insurance 268,631.00

290 Other Current Employee Benefits 52,000.00

Total Personnel Services – Employee Benefits

\$630,660.00

300 Purchased Professional and Technical Services

324 Professional Educational Services – Employee Training and Development Services 504.00

340 Technical Services 5,540.00

390 Other Purchased Professional and Technical Services 2,506.00

Total Purchased Professional and Technical Services

\$8,550.00

400 Purchased Property Services

410 Cleaning Services 1,705.00

430 Repairs and Maintenance Services 1,692.00

440 Rentals 6,168.00

Total Purchased Property Services

\$9,565.00

500 Other Purchased Services

530 Communications 161.00

540 Advertising 1,326.00

Total Other Purchased Services

\$1,487.00

600 Supplies

610 General Supplies 91,031.00

630 Food 1,419,924.00

Total Supplies

\$1,510,955.00

800 Other Objects

810 Dues and Fees 631.00

Total Other Objects

\$631.00

Total 3000 Operation of Non-Instructional Services

\$2,999,802.00

Food Service / Cafeteria Operations Fund (51)

	<u>Elementary</u>	<u>Secondary</u>	<u>Federal</u>	<u>Total</u>
3100 Food Services				
100 Personnel Services – Salaries				
100 Personnel Services – Salaries				837,954.00
Total Personnel Services – Salaries				\$837,954.00
200 Personnel Services – Employee Benefits				
220 Social Security Contributions				63,115.00
230 PSERS Retirement Contributions				234,367.00
250 Unemployment Compensation				4,175.00
260 Workers' Compensation				8,372.00
270 Group Insurance – Self-Insurance				268,631.00
290 Other Current Employee Benefits				52,000.00
Total Personnel Services – Employee Benefits				\$630,660.00
300 Purchased Professional and Technical Services				
324 Professional Educational Services – Employee Training and Development Services				504.00
340 Technical Services				5,540.00
390 Other Purchased Professional and Technical Services				2,506.00
Total Purchased Professional and Technical Services				\$8,550.00
400 Purchased Property Services				
410 Cleaning Services				1,705.00
430 Repairs and Maintenance Services				1,692.00
440 Rentals				6,168.00
Total Purchased Property Services				\$9,565.00
500 Other Purchased Services				
530 Communications				161.00
540 Advertising				1,326.00
Total Other Purchased Services				\$1,487.00
600 Supplies				
610 General Supplies				91,031.00
630 Food				1,419,924.00
Total Supplies				\$1,510,955.00
800 Other Objects				
810 Dues and Fees				631.00
Total Other Objects				\$631.00
Total 3100 Food Services				\$2,999,802.00

	<u>Food Service(51)</u>	<u>Child Care Operations(52)</u>	<u>Other Enterprise(58)</u>	<u>Internal Service(60)</u>	<u>Total</u>
3000 <u>Operation of Non-Instructional Services</u>					
3100 Food Services	2,999,802.00				2,999,802.00
Total Operation of Non-Instructional Services	\$2,999,802.00				\$2,999,802.00
TOTAL ACTUAL EXPENDITURES & OTHER FINANCING USES	\$2,999,802.00				\$2,999,802.00