

LEA Name : Coatesville Area SD  
Address : 3030 CG Zinn Rd  
Thorndale , PA 19372


County : Chester  
AUN Number : 124151902  
LEA Type : SD


# Annual Financial Report Accuracy Certification Statement

For Fiscal Year Ending  
**6/30/2017**

Pennsylvania Department of Education  
&  
Office of Comptroller Operations  
PDE-2056: Intermediate Unit  
PDE-2057: School District, AVTS/CTC, Charter School,  
and Special Program Jointure

**CERTIFICATION: By signing this page I agree that the electronic data submitted is a complete and accurate statement of the financial operations and status of the local education agency for the fiscal year. It has been prepared in accordance with generally accepted accounting principles and established Commonwealth of PA reporting guidelines.**

  
\_\_\_\_\_  
Chief School Administrator Signature

  
\_\_\_\_\_  
Board Secretary Signature

\_\_\_\_\_  
Date **2-6-18**

\_\_\_\_\_  
Date **2-6-18**

Jeffrey S Ammerman  
Contact Person  
(610)466-2403 Ext :  
Contact Person Telephone Number

ammermanj@casdschools.org  
Contact Person E-mail Address  
Contact Person Fax Number

# Audit Certification

## Annual Financial Report:

For Fiscal Year Ending 6/30/2017

(Pursuant to PA School Code Section 218(b))

LEA Name : Coatesville Area SD  
AUN Number : 124151902  
County : Chester

Audit Certification Due:  
12/31/2017

This certification is applicable to the Annual Financial Report data submitted through the Consolidated Financial Reporting System on: 2/14/2018 Date

Auditing Firm: Maillie  
140 Whitaker Avenue  
Mont Clare PA 19453

Auditor Contact Name: Anthony Rapp  
Auditor Phone: 610-482-3156  
Auditor E-mail: arapp@maillie.com

CERTIFICATION: By signing this page I agree that the financial statements of the school have been properly audited as noted above pursuant to Article XXIV, and in the auditor's professional opinion, the Annual Financial Report (PDE-2057) submitted on the date referenced is materially consistent with the audited financial statements. THIS IS TRUE TO THE BEST OF MY KNOWLEDGE & BELIEF.

Chief School Administrator

[Signature]  
Signature

2/5/18  
Date

Board Secretary

[Signature]  
Signature

2-6-18  
Date

Jeffrey S Ammerman

Contact Person

(610)466-2403

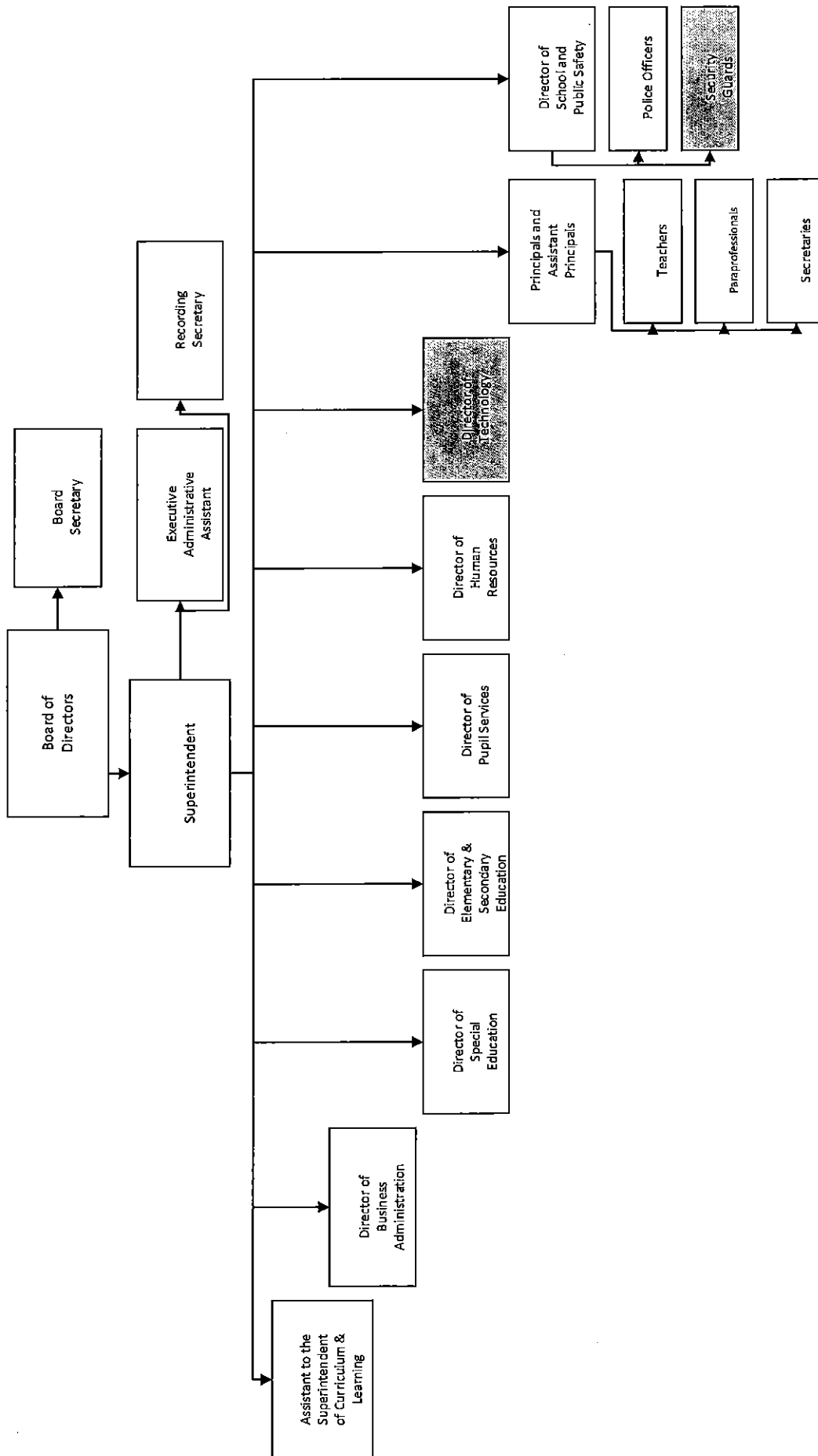
Ext :

Contact Person Telephone Number

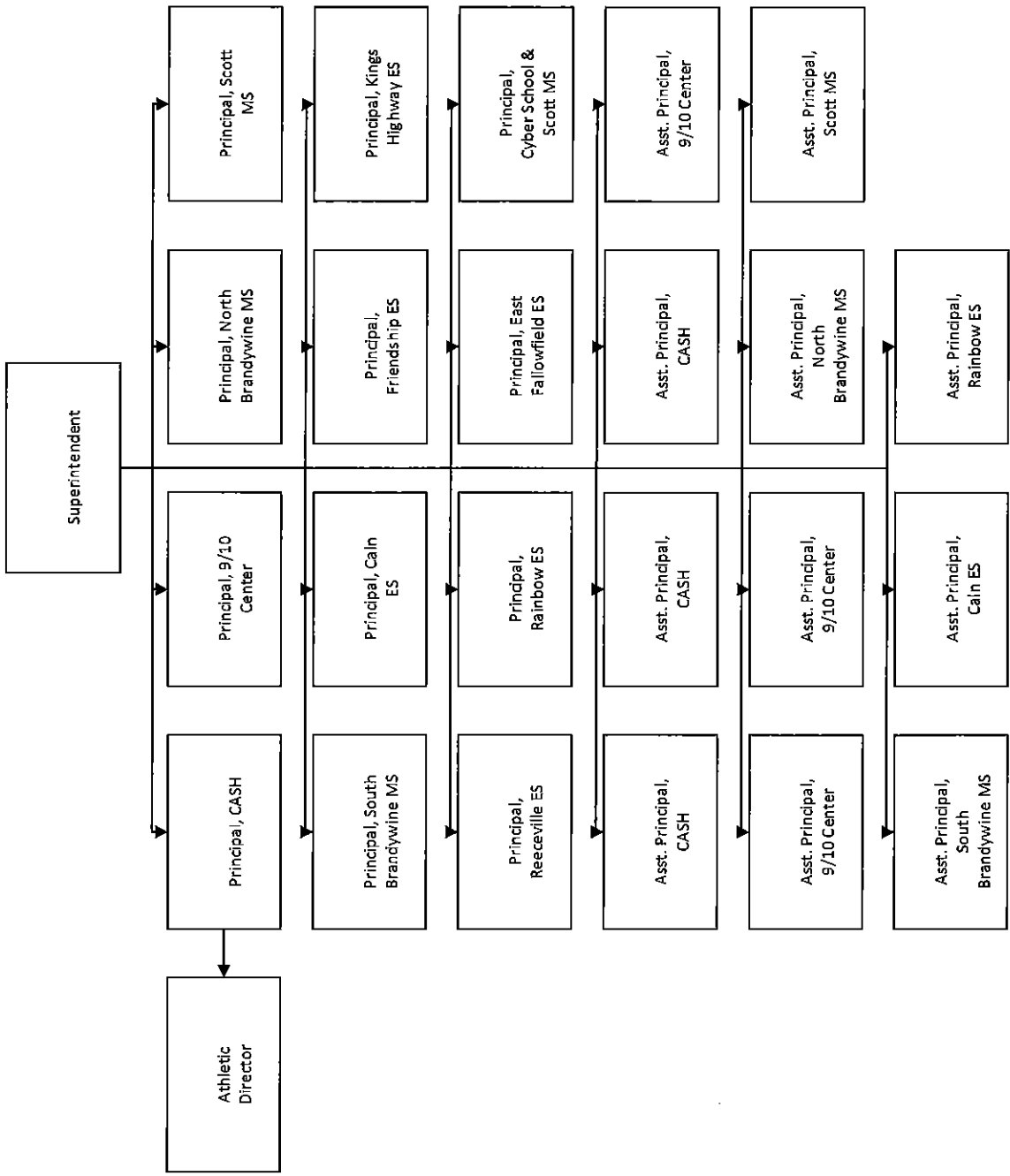
ammermanj@casdschools.org

Contact Person E-mail Address

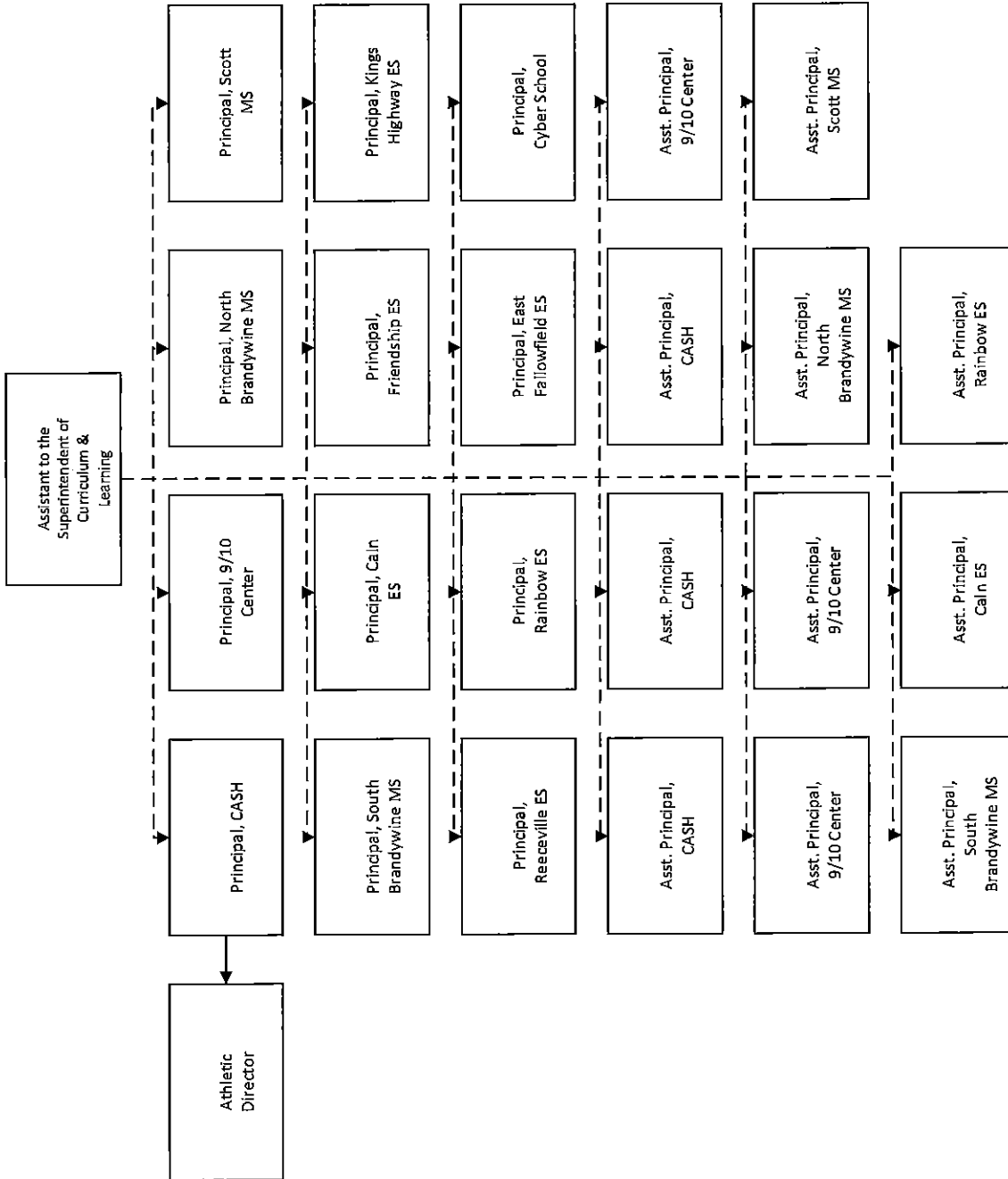
Contact Person Fax Number



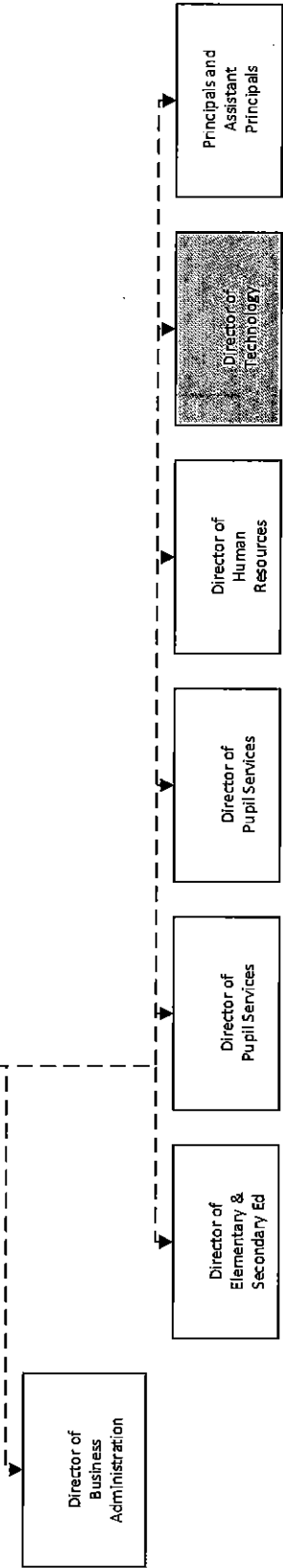
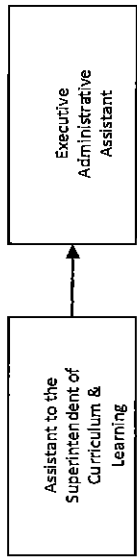
Outsourced Position



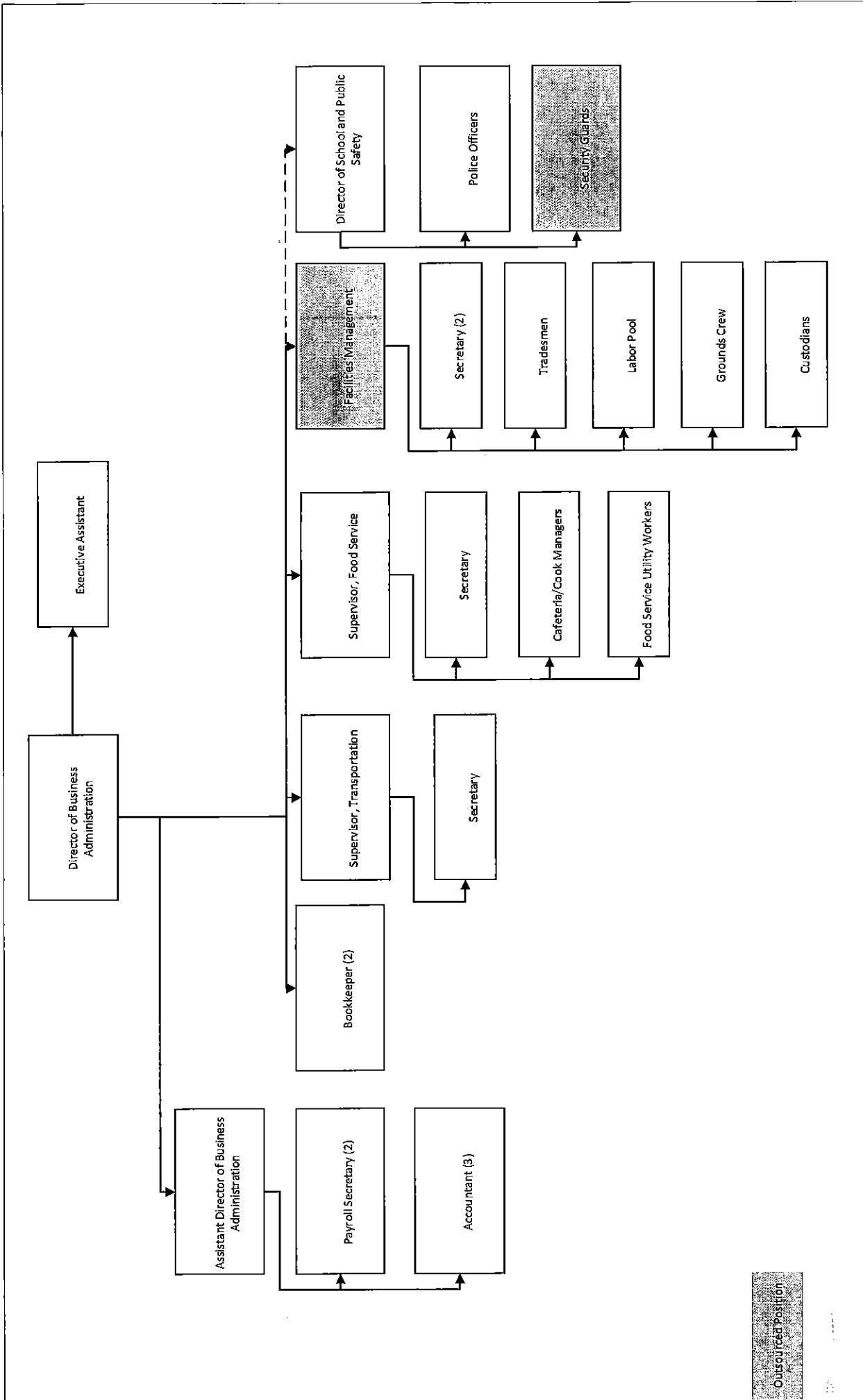
Outsourced Position



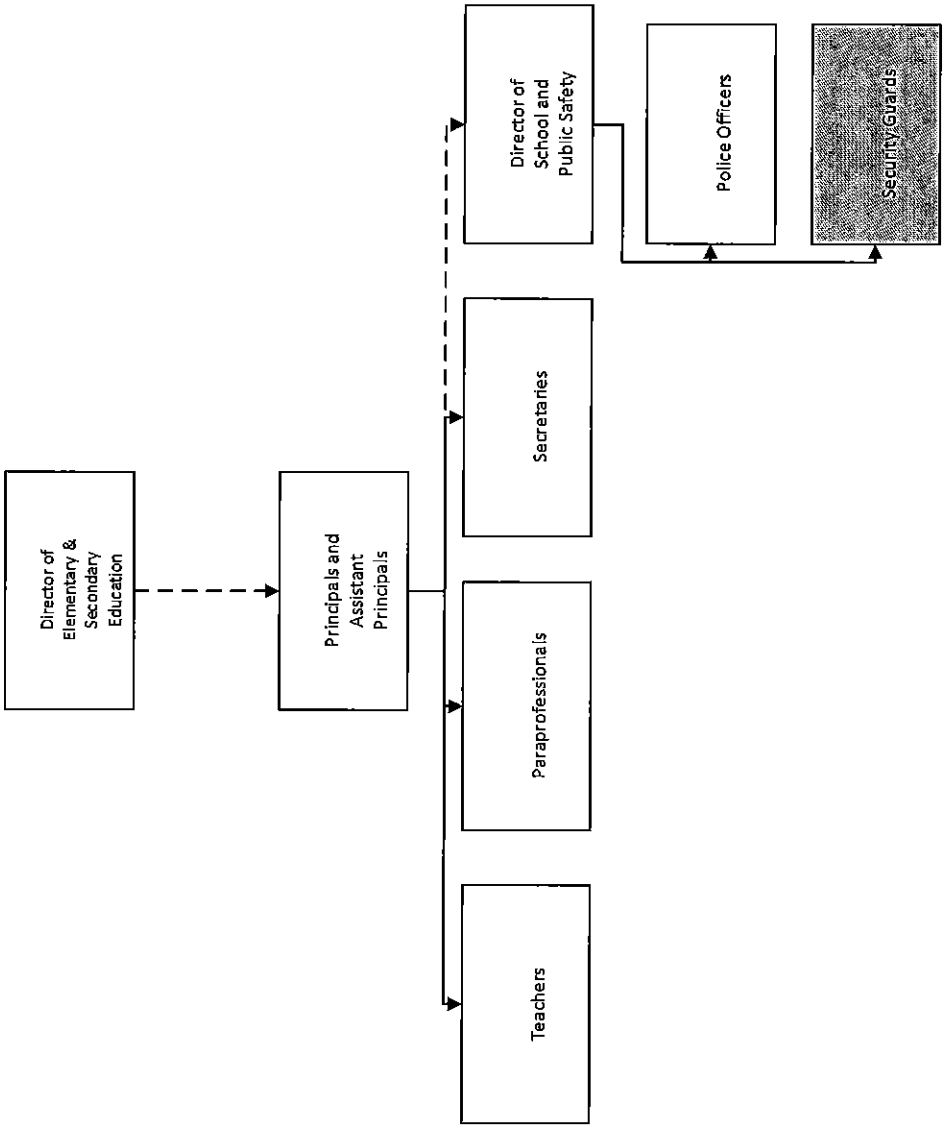
Outsourced Position



OUTSOURCED POSITION

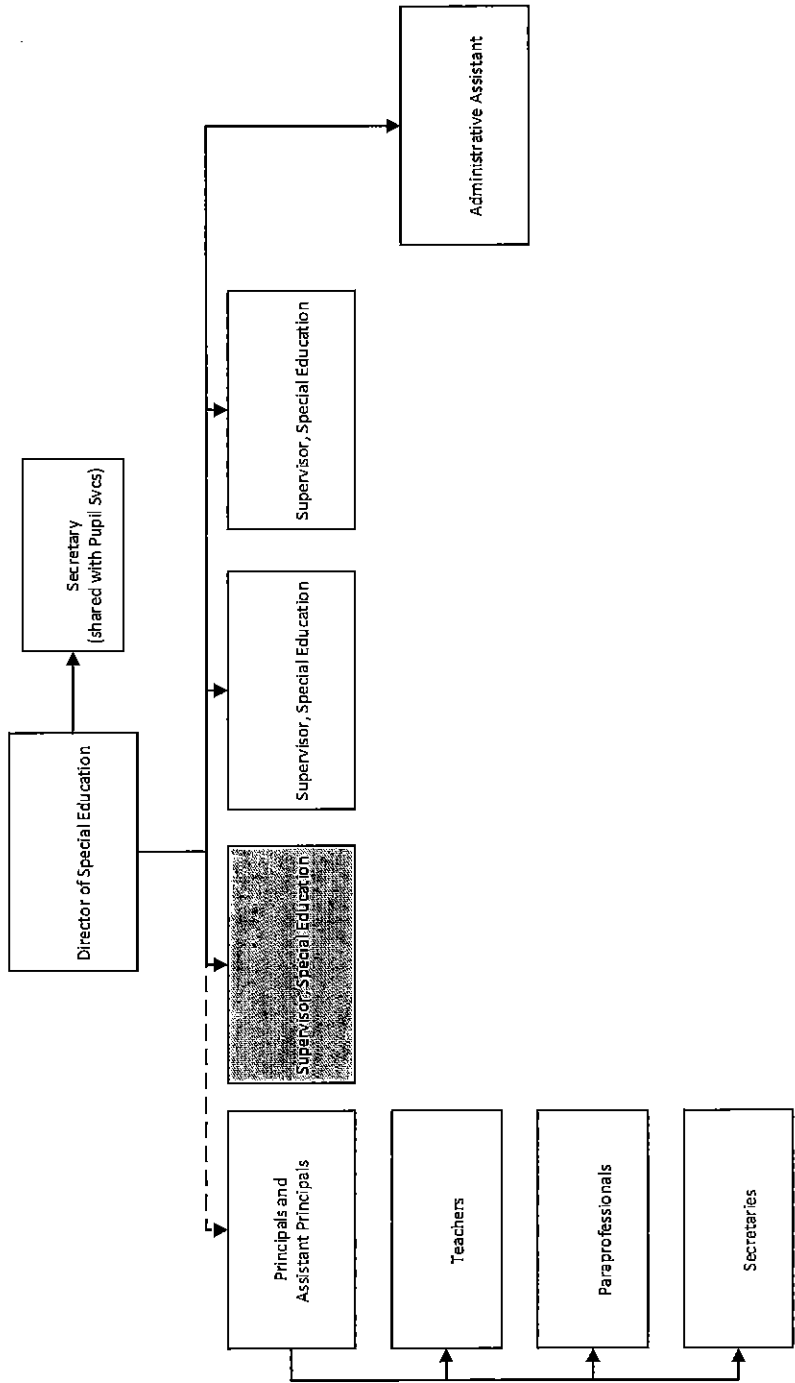


Outsourced Position

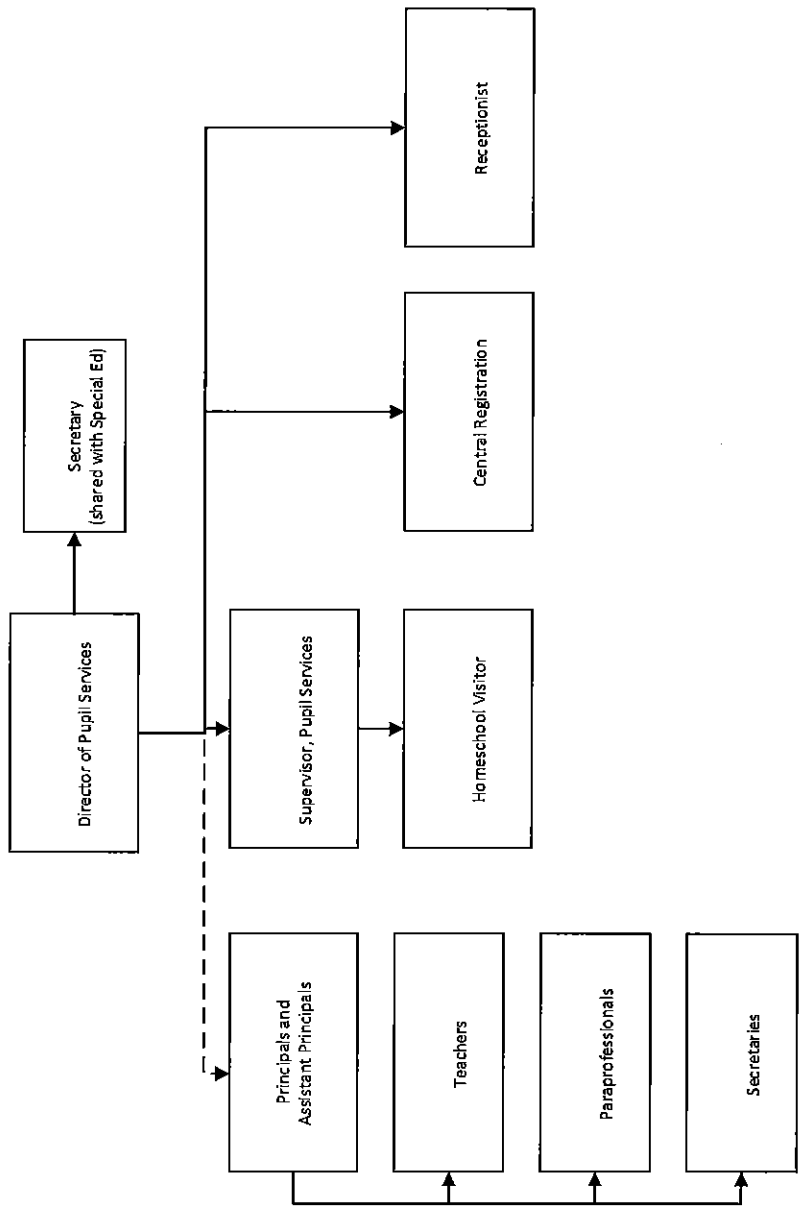


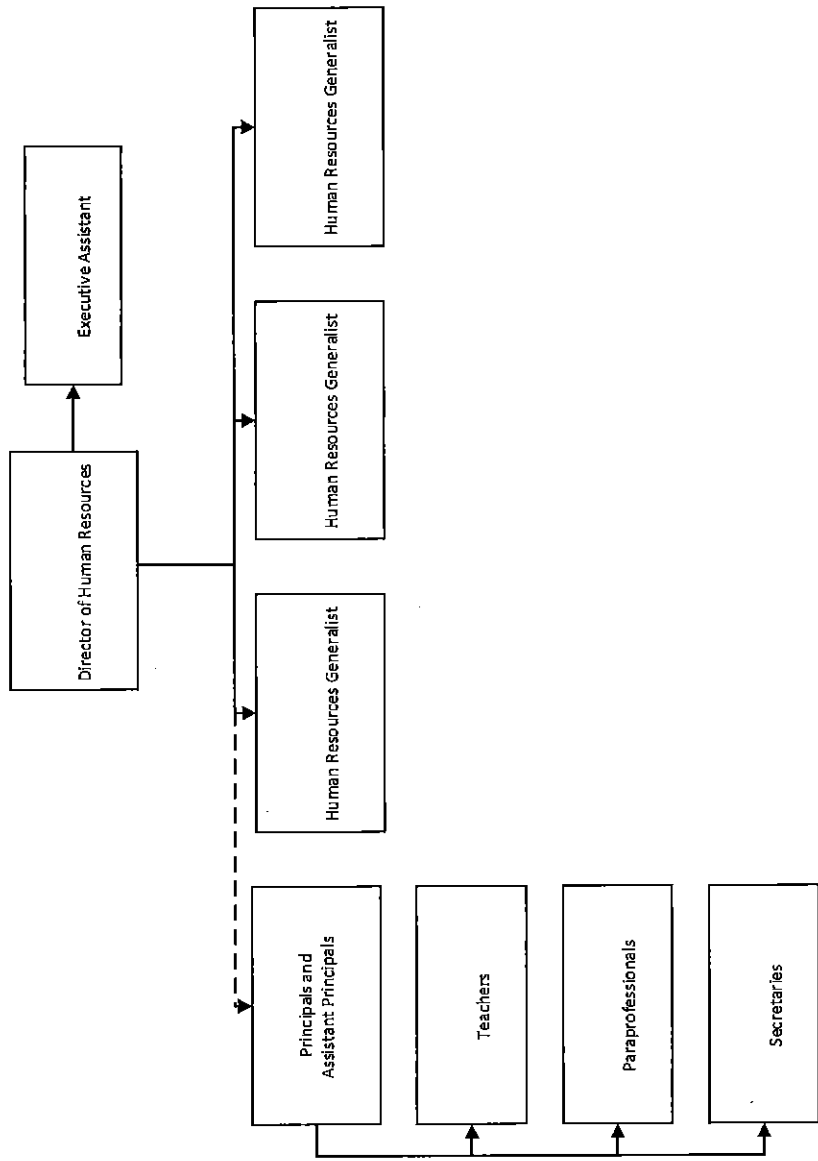
Outsourced position



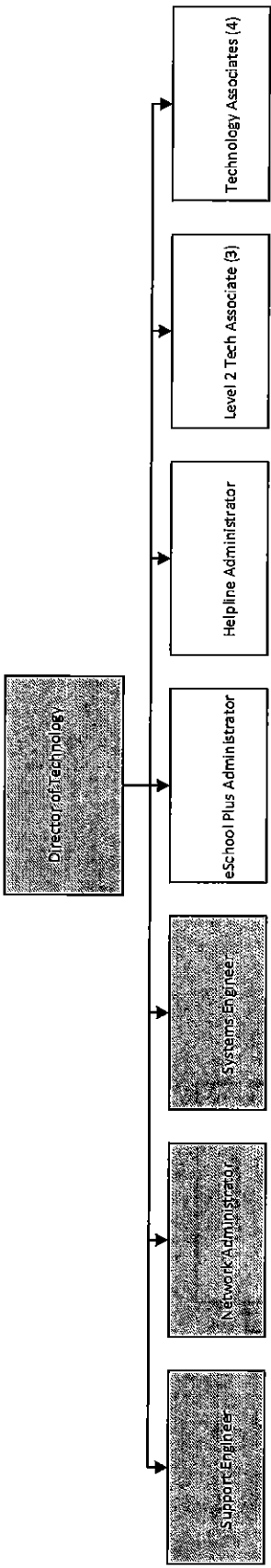


Outsourced Position





Outsourced Position



Outsourced Position

<u>Val Number</u>	<u>Description</u>	<u>Justification</u>
16015	<p>REP Fund 51: Object 300 is greater than object 500. Purchased services for food service contracted services should be coded to objects 571 and 572. Correct or enter a justification.</p> <p>REP Fund 51 Object 300: \$38,852.00            REP Fund 51 Object 500: \$1,817.00</p>	<p>Food Service Directors secretary position is filled by a Temp Employment Agency.</p>
42420	<p>Expenditure Detail: Total current year 2700-513 expenditure varies from prior year by 10%. Correct the data or enter a justification.</p> <p>2700-513, AFR Exp Detail: \$9,834,508.25            2700-513, PY AFR Amount: \$8,908,428.77</p>	<p>Significant increase in charter school and special education transportation in 2016-17.</p>
50160	<p>SOIN: All Governmental Fund General Obligation Bonds must include an amount for Interest Paid during Fiscal Year. Correct data or enter a justification.</p>	<p>Bonds were issued in March, first payment will not be until August.</p>
50280	<p>SOIN: Current Year AFR amount must equal Prior Year AFR amount.</p> <p>SOIN, Beg Bal, Gen Obl Bnds: \$174,958,207.35            PY Ending Bal, Gen Obl Bnds: \$175,803,133.00</p>	<p>2013 Outstanding Capital Appreciation Bonds were incorrectly accounted for in 2015-16 AFR in split between interest and principal.</p>

Amounts Expressed in Whole Dollars	<u>General Fund</u> <u>(10)</u>	<u>Public Purpose Trust</u> <u>(27)</u>	<u>Other Compt Approved</u> <u>(28)</u>	<u>Athletic / Activity</u> <u>(29)</u>	<u>Capital Reserve (690.</u> <u>1850)</u> <u>(31)</u>
<b>Assets And Deferred Outflows Of Resources</b>					
<b>Assets</b>					
0100 Cash and Cash Equivalents	4,134,449				
0110 Investments	4,213,386				
0120 Taxes Receivable	6,235,817				
0130 Due From Other Funds	1,056,358				
0141 Due From Other Governments					
0142 State Revenue Receivable	7,723,788				
0143 Federal Revenue Receivable	1,482,383				
0145 Other Intergovernmental Revenue Receivable					
0146 Due from Primary Government					
0147 Due from Component Unit					
0150 Other Receivables	476,261				
0170 Inventories					
0180 Prepaid Expenses (Expenditures)					
0190 Other Current Assets					
<b>Total Assets</b>	<b>\$25,322,442</b>				
0910 Deferred Outflows of Resources					
<b>Total Assets And Deferred Outflows Of Resources</b>	<b>\$25,322,442</b>				

Amounts Expressed in Whole Dollars	<u>Capital Reserve (1431)</u> <u>(32)</u>	<u>Other Capital Projects</u> <u>Fund</u> <u>(39)</u>	<u>Debt Service</u> <u>(40)</u>	<u>Permanent</u> <u>(90)</u>	<u>Total Governmental</u> <u>Funds</u>
<b>Assets And Deferred Outflows Of Resources</b>					
<b>Assets</b>					
0100 Cash and Cash Equivalents	1,093,154	5,379,598			10,607,201
0110 Investments					4,213,386
0120 Taxes Receivable					6,235,817
0130 Due From Other Funds					1,056,358
0141 Due From Other Governments					
0142 State Revenue Receivable					7,723,788
0143 Federal Revenue Receivable					1,482,383
0145 Other Intergovernmental Revenue Receivable					
0146 Due from Primary Government					
0147 Due from Component Unit					
0150 Other Receivables					476,261
0170 Inventories					
0180 Prepaid Expenses (Expenditures)					
0190 Other Current Assets					
<b>Total Assets</b>	<b>\$1,093,154</b>	<b>\$5,379,598</b>			<b>\$31,795,194</b>
0910 Deferred Outflows of Resources					
<b>Total Assets And Deferred Outflows Of Resources</b>	<b>\$1,093,154</b>	<b>\$5,379,598</b>			<b>\$31,795,194</b>

Amounts Expressed in Whole Dollars

<u>General Fund</u>	<u>Public Purpose Trust</u>	<u>Other Compt Approved</u>	<u>Athletic / Activity</u>	<u>Capital Reserve (690.</u>
<u>(10)</u>	<u>(27)</u>	<u>(28)</u>	<u>(29)</u>	<u>1850)</u>
				<u>(31)</u>

**Liabilities And Deferred Inflows Of Resources And Fund Balances**

**Liabilities**

0400 Due to Other Funds	
0411 Due to Other Governments	
0412 Due to Primary Government	
0413 Due to Component Unit	
0420 Accounts Payable	9,726,907
0430 Contracts Payable	
0440 Current Portion of Long-Term Debt	
0450 Short-Term Payables	
0461 Accrued Salaries and Benefits	391,352
0462 Payroll Deductions and Withholding	7,458,422
0480 Unearned Revenues	
0490 Other Current Liabilities	

<b>Total Liabilities</b>	<b>\$17,576,681</b>
--------------------------	---------------------

0950 Deferred Inflows of Resources	4,936,379
------------------------------------	-----------

**Fund Balances**

0810 Nonspendable Fund Balance	
0820 Restricted Fund Balance	
0830 Committed Fund Balance	
0840 Assigned Fund Balance	
0850 Unassigned Fund Balance	2,809,382

<b>Total Fund Balances</b>	<b>\$2,809,382</b>
----------------------------	--------------------

<b>Total Liabilities, Deferred Inflows Of Resources And Fund Balances</b>	<b>\$25,322,442</b>
---	---------------------



Amounts Expressed in Whole Dollars	<u>Capital Reserve (1431)</u> <u>(32)</u>	<u>Other Capital Projects</u> <u>Fund</u> <u>(39)</u>	<u>Debt Service</u> <u>(40)</u>	<u>Permanent</u> <u>(90)</u>	<u>Total Governmental</u> <u>Funds</u>
<b>Liabilities And Deferred Inflows Of Resources And Fund Balances</b>					
<b>Liabilities</b>					
0400 Due to Other Funds					
0411 Due to Other Governments					
0412 Due to Primary Government					
0413 Due to Component Unit					
0420 Accounts Payable		2,325			9,729,232
0430 Contracts Payable					
0440 Current Portion of Long-Term Debt					
0450 Short-Term Payables					
0461 Accrued Salaries and Benefits					391,352
0462 Payroll Deductions and Withholding					7,458,422
0480 Unearned Revenues					
0490 Other Current Liabilities					
<b>Total Liabilities</b>		<b>\$2,325</b>			<b>\$17,579,006</b>
0950 Deferred Inflows of Resources					4,936,379
<b>Fund Balances</b>					
0810 Nonspendable Fund Balance					
0820 Restricted Fund Balance	1,093,154	5,377,273			6,470,427
0830 Committed Fund Balance					
0840 Assigned Fund Balance					
0850 Unassigned Fund Balance					2,809,382
<b>Total Fund Balances</b>	<b>\$1,093,154</b>	<b>\$5,377,273</b>			<b>\$9,279,809</b>
<b>Total Liabilities, Deferred Inflows Of Resources And Fund Balances</b>	<b>\$1,093,154</b>	<b>\$5,379,598</b>			<b>\$31,795,194</b>

Amounts Expressed in Whole Dollars	<u>General Fund</u> <u>(10)</u>	<u>Public Purpose Trust</u> <u>(27)</u>	<u>Other Compt Approved</u> <u>(28)</u>	<u>Athletic / Activity</u> <u>(29)</u>	<u>Capital Reserve (690.</u> <u>1850)</u> <u>(31)</u>
<b>Revenues</b>					
6000 Revenue from Local Sources	105,651,299				
7000 Revenue from State Sources	50,567,326				
8000 Revenue from Federal Sources	4,759,045				
<b>Total Revenues</b>	<b>\$160,977,670</b>				
<b>Expenditures</b>					
1000 Instruction	113,753,041				
2000 Support Services	38,830,679				
3000 Operation of Non-Instructional Services	1,232,423				
4000 Facilities Acquisition, Construction and Improvement Services					
5110 Debt Service	15,153,961				
5130 Refund of Prior Year Revenues / Receipts	190,442				
<b>Total Expenditures</b>	<b>\$169,160,546</b>				
<b>Excess (Deficiency) Of Revenues Over Expenditures</b>	<b>(\$8,182,876)</b>				
<b>Other Financing Sources (Uses)</b>					
9110 Face Value of Bonds Issued					
9120 Proceeds from Refunding of Bonds					
9130 Bond Premiums					
9200 Proceeds from Extended-Term Financing					
9300 Interfund Transfers - IN					
9400 Sale of or Compensation for Loss of Fixed Assets					
9710 Transfers from Component Units					
9720 Transfers from Primary Governments					
9910 Other Financing Sources Not Listed in the 9000 Series					
9990 Insurance Recoveries					
5120 Debt Service – Refunded Bonds					
5150 Bond Discounts					
5200 Interfund Transfers – Out	1,000,000				
5300 Transfers Out to Component Units/Primary Governments					
<b>Total Other Financing Sources (Uses)</b>	<b>(\$1,000,000)</b>				

Amounts Expressed in Whole Dollars	<u>Capital Reserve (1431)</u> <u>(32)</u>	<u>Other Capital Projects</u> <u>Fund</u> <u>(39)</u>	<u>Debt Service</u> <u>(40)</u>	<u>Permanent</u> <u>(90)</u>	<u>Total Governmental</u> <u>Funds</u>
<b>Revenues</b>					
6000 Revenue from Local Sources	2,813	25,078			105,679,190
7000 Revenue from State Sources					50,567,326
8000 Revenue from Federal Sources					4,759,045
<b>Total Revenues</b>	<b>\$2,813</b>	<b>\$25,078</b>			<b>\$161,005,561</b>
<b>Expenditures</b>					
1000 Instruction					113,753,041
2000 Support Services			660,305		39,490,984
3000 Operation of Non-Instructional Services					1,232,423
4000 Facilities Acquisition, Construction and Improvement Services		1,850,068			1,850,068
5110 Debt Service					15,153,961
5130 Refund of Prior Year Revenues / Receipts		29,361			219,803
<b>Total Expenditures</b>		<b>\$1,879,429</b>	<b>\$660,305</b>		<b>\$171,700,280</b>
<b>Excess (Deficiency) Of Revenues Over Expenditures</b>	<b>\$2,813</b>	<b>(\$1,854,351)</b>	<b>(\$660,305)</b>		<b>(\$10,694,719)</b>
<b>Other Financing Sources (Uses)</b>					
9110 Face Value of Bonds Issued					
9120 Proceeds from Refunding of Bonds			57,755,000		57,755,000
9130 Bond Premiums			7,876,050		7,876,050
9200 Proceeds from Extended-Term Financing					
9300 Interfund Transfers - IN	1,000,000				1,000,000
9400 Sale of or Compensation for Loss of Fixed Assets					
9710 Transfers from Component Units					
9720 Transfers from Primary Governments					
9910 Other Financing Sources Not Listed in the 9000 Series					
9990 Insurance Recoveries					
5120 Debt Service – Refunded Bonds			64,970,745		64,970,745
5150 Bond Discounts					
5200 Interfund Transfers – Out					1,000,000
5300 Transfers Out to Component Units/Primary Governments					
<b>Total Other Financing Sources (Uses)</b>	<b>\$1,000,000</b>		<b>\$660,305</b>		<b>\$660,305</b>

Amounts Expressed in Whole Dollars	<u>General Fund</u> <u>(10)</u>	<u>Public Purpose Trust</u> <u>(27)</u>	<u>Other Compt Approved</u> <u>(28)</u>	<u>Athletic / Activity</u> <u>(29)</u>	<u>Capital Reserve</u> <u>(690.</u> <u>1850)</u> <u>(31)</u>
<b>Special And Extraordinary Items</b>					
9920 Special Items – Gains					
9930 Extraordinary Items – Gains					
5520 Special Items – Losses					
5530 Extraordinary Items – Losses					
<b>Net Change In Fund Balances</b>	<b>(\$9,182,876)</b>				
<b>Fund Balance</b>					
0001 Fund Balance - Beginning of Fiscal Year	11,992,258				
<b>Fund Balance - End Of Year</b>	<b>\$2,809,382</b>				

Amounts Expressed in Whole Dollars	<u>Capital Reserve (1431)</u> <u>(32)</u>	<u>Other Capital Projects</u> <u>Fund</u> <u>(39)</u>	<u>Debt Service</u> <u>(40)</u>	<u>Permanent</u> <u>(90)</u>	<u>Total Governmental</u> <u>Funds</u>
<b>Special And Extraordinary Items</b>					
9920 Special Items – Gains					
9930 Extraordinary Items – Gains					
5520 Special Items – Losses					
5530 Extraordinary Items – Losses					
<b>Net Change In Fund Balances</b>	<b>\$1,002,813</b>	<b>(\$1,854,351)</b>			<b>(\$10,034,414)</b>
<b>Fund Balance</b>					
0001 Fund Balance - Beginning of Fiscal Year	90,341	7,231,625			19,314,224
<b>Fund Balance - End Of Year</b>	<b>\$1,093,154</b>	<b>\$5,377,274</b>			<b>\$9,279,810</b>

Amounts Expressed in Whole Dollars	<u>Food Service</u> <u>(51)</u>	<u>Child Care</u> <u>Operations</u> <u>(52)</u>	<u>Other Enterprise</u> <u>(58)</u>	<u>TOTAL</u>	<u>Internal Service</u> <u>(60)</u>
<b>Assets And Deferred Outflows Of Resources</b>					
<b>Current Assets</b>					
0100 Cash and Cash Equivalents	1,369,451			1,369,451	
0110 Investments					
0130 Due From Other Funds					
0141 Due From Other Governments					
0142 State Revenue Receivable	2,914			2,914	
0143 Federal Revenue Receivable	110,224			110,224	
0146 Due from Primary Government					
0147 Due from Component Unit					
0150 Other Receivables	18,800			18,800	
0170 Inventories	36,708			36,708	
0180 Prepaid Expenses (Expenditures)					
0190 Other Current Assets					
<b>Total Current Assets</b>	<b>\$1,538,097</b>			<b>\$1,538,097</b>	
<b>Noncurrent Assets</b>					
0211 Land					
0212 Site Improvements (Net)					
0220 Buildings and Building Improvements (Net)					
0230 Machinery, Equipment and Furniture (Net)	22,045			22,045	
0250 Construction in Progress					
0260 Long Term Prepayments					
0290 Other Noncurrent Assets					
<b>Total Noncurrent Assets</b>	<b>\$22,045</b>			<b>\$22,045</b>	
0910 Deferred Outflows of Resources	616,000			616,000	
<b>Total Assets And Deferred Outflows Of Resources</b>	<b>\$2,176,142</b>			<b>\$2,176,142</b>	

LEA : 124151902 Coatesville Area SD

Printed 2/6/2018 2:59:07 PM

Page - 2 of 2

Amounts Expressed in Whole Dollars	<u>Food Service</u> <u>(51)</u>	<u>Child Care</u> <u>Operations</u> <u>(52)</u>	<u>Other Enterprise</u> <u>(58)</u>	<u>TOTAL</u>	<u>Internal Service</u> <u>(60)</u>
<b>Liabilities And Deferred Inflows Of Resources And Net Position</b>					
<b>Current Liabilities</b>					
0400 Due to Other Funds	1,056,358			1,056,358	
0411 Due to Other Governments					
0413 Due to Component Unit					
0420 Accounts Payable	44,972			44,972	
0430 Contracts Payable					
0440 Current Portion of Long-Term Debt					
0450 Short-Term Payables					
0461 Accrued Salaries and Benefits	2,136			2,136	
0462 Payroll Deductions and Withholding	43,846			43,846	
0480 Unearned Revenues					
0490 Other Current Liabilities					
<b>Total Current Liabilities</b>	<b>\$1,147,312</b>			<b>\$1,147,312</b>	
<b>Noncurrent Liabilities</b>					
0510 Bonds Payable					
0520 Extended-Term Financing Agreements Payable					
0530 Lease-Purchase Obligations					
0540 Accumulated Compensated Absences	69,284			69,284	
0550 Authority Lease Obligations					
0560 Other Post-Employment Benefits (OPEB)	82,910			82,910	
0570 Net Pension Liability	3,493,000			3,493,000	
0599 Other Noncurrent Liabilities					
<b>Total Noncurrent Liabilities</b>	<b>\$3,645,194</b>			<b>\$3,645,194</b>	
<b>Total Liabilities</b>	<b>\$4,792,506</b>			<b>\$4,792,506</b>	
0950 Deferred Inflows of Resources	70,000			70,000	
<b>Net Position</b>					
0791 Net Investment in Capital Assets					
0008 Restricted Net Position (0792 – 0798)	22,045			22,045	
0799 Unrestricted Net Position	(2,708,409)			(2,708,409)	
<b>Total Net Position</b>	<b>(\$2,686,364)</b>			<b>(\$2,686,364)</b>	
<b>Total Liabilities And Deferred Inflows Of Resources And Net Position</b>	<b>\$2,176,142</b>			<b>\$2,176,142</b>	

Amounts Expressed in Whole Dollars	<u>Food Service</u> <u>(51)</u>	<u>Child Care Operations</u> <u>(52)</u>	<u>Other Enterprise</u> <u>(58)</u>	<u>TOTAL</u>	<u>Internal Service</u> <u>(60)</u>
<b>Operating Revenues</b>					
6600 Food Service Revenue	461,048			461,048	
0071 Charges for Services	107,141			107,141	
0072 Other Operating Revenue					
<b>Total Operating Revenues</b>	<b>\$568,189</b>			<b>\$568,189</b>	
<b>Operating Expenses</b>					
100 Personnel Services – Salaries	945,845			945,845	
200 Personnel Services – Employee Benefits	702,129			702,129	
300 Purchased Professional and Technical Services	38,852			38,852	
400 Purchased Property Services	29,146			29,146	
500 Other Purchased Services	1,817			1,817	
600 Supplies	1,526,902			1,526,902	
740 Depreciation	36,019			36,019	
810 Dues and Fees					
890 Miscellaneous Expenditures	528			528	
<b>Total Operating Expenses</b>	<b>\$3,281,238</b>			<b>\$3,281,238</b>	
<b>Operating Income (Loss)</b>	<b>(\$2,713,049)</b>			<b>(\$2,713,049)</b>	
<b>Non Operating Revenues (Expenses)</b>					
6500 Earnings on Investments	10,239			10,239	
6920 Contributions and Donations from Private Sources					
6930 Gains or Losses on Sale of Fixed Assets					
6991 Refunds of a Prior Year Expenditure					
7000 Revenue from State Sources	253,072			253,072	
8000 Revenue from Federal Sources	2,422,646			2,422,646	
820 Claims and Judgments Against the LEA					
830 Interest					
<b>TOTAL Non Operating Revenues (Expenses)</b>	<b>\$2,685,957</b>			<b>\$2,685,957</b>	
<b>Income (Loss) Before Contributions And Transfers</b>	<b>(\$27,092)</b>			<b>(\$27,092)</b>	



Amounts Expressed in Whole Dollars	<u>Food Service</u> <u>(51)</u>	<u>Child Care Operations</u> <u>(52)</u>	<u>Other Enterprise</u> <u>(58)</u>	<u>TOTAL</u>	<u>Internal Service</u> <u>(60)</u>
<b>Contributions, Transfers, and Special and Extraordinary Items</b>					
5200 Interfund Transfers – Out					
5300 Transfers Out to Component Units/Primary Governments					
5520 Special Items – Losses					
5530 Extraordinary Items – Losses					
9300 Interfund Transfers - IN					
9500 Capital Contributions					
9700 Transfers IN From Component Units/Primary Governments					
9920 Special Items – Gains					
9930 Extraordinary Items – Gains					
<b>Change In Net Position</b>	<b>(\$27,092)</b>			<b>(\$27,092)</b>	
0002 Net Position - Beginning of Fiscal Year	(2,623,253)			(2,623,253)	
0003 Accounting Changes / Residual Equity Transfers	(36,019)			(36,019)	
<b>Net Position - End Of Year</b>	<b>(\$2,686,364)</b>			<b>(\$2,686,364)</b>	

Amounts Expressed in Whole Dollars	<u>Food Service</u> <u>(51)</u>	<u>Child Care Operations</u> <u>(52)</u>	<u>Other Enterprise</u> <u>(58)</u>	<u>TOTAL</u>	<u>Internal Service(60)</u>
<b>Cash Flows From Operating Activities</b>					
0011 Cash Receipts From Users	560,721			560,721	
0012 Cash Receipts From Assessments Made to Other Funds					
0013 Cash Receipts From Earnings on Investments					
0014 Cash Receipts From Other Operating Revenue					
0015 Cash Payments To Employees For Services	1,510,492			1,510,492	
0016 Cash Payments For Insurance Claims					
0017 Cash Payments To Suppliers For Goods and Services	2,107,681			2,107,681	
0018 Cash Payments For Other Operating Expenses					
<b>Net Cash Provided By (Used For) Operating Activities</b>	<b>(\$3,057,452)</b>			<b>(\$3,057,452)</b>	
<b>Cash Flows From Non-Capital Financing Activities</b>					
0021 Receipts From Local Sources - 6000					
0022 Receipts From State Sources - 7000	253,396			253,396	
0023 Receipts From Federal Sources -8000	2,378,825			2,378,825	
0024 Notes and Loans Received (Repaid)					
0025 Interest Paid on Notes/Loans - 5100-830					
0026 Operating Transfers In (Out)/Residual Equity Trans					
0027 Operating Transfers In (Out) Primary Government / Comp Unit	(146,541)			(146,541)	
0028 Receipts From Refund of Prior Year Expenditures - 6991					
0029 Special and Extraordinary Gains (losses)					
<b>Net Cash Prov By (Used for) Non-Capital Financing Activities</b>	<b>\$2,485,680</b>			<b>\$2,485,680</b>	
<b>Cash Flows From Capital and Related Financing Activities</b>					
0031 Payments For Fac Acq, Const, and Imp - 4000					
0032 Gain / (Loss) on Sale of Fixed Assets - 6930					
0033 Proceeds From Extended Term Financing - 9200					
0034 Principal Paid on Financing Agreements					
0035 Interest Paid on Financing Agreements - 5100-830					
0036 (Inc) Dec in Contributed Capital					
<b>Net Cash Prov By (Used for) Capital and Related Financing Activities</b>					
<b>Cash Flows From Investing Activities</b>					
0041 Earnings on Investments - 6500	10,239			10,239	
0042 Purchase of Inv Securities / Deposits to Inv Pools					
0043 Receipts From Investment Pool Withdrawals					
0044 Proceeds from Sale and Maturity of Inv Securities					
0045 Loans Received (Paid)					
<b>Net Cash Prov By (Used for) Investing Activities</b>	<b>\$10,239</b>			<b>\$10,239</b>	

	<u>Food Service</u> <u>(51)</u>	<u>Child Care Operations</u> <u>(52)</u>	<u>Other Enterprise</u> <u>(58)</u>	<u>TOTAL</u>	<u>Internal Service</u> <u>(60)</u>
<b>Net Increase (Decrease) in Cash Flows</b>	<b>(561,533)</b>			<b>(561,533)</b>	
0004 Cash and Cash Equivalents Beginning of Year	1,930,984			1,930,984	
<b>Cash and Cash Equivalents at Year End</b>	<b>\$1,369,451</b>			<b>\$1,369,451</b>	
<hr/>					
<b>Reconciliation of Operating Income (Loss) To Net Cash Provided by (Used For) Operating Activities</b>					
0005 Operating Income (Loss) per REP	(2,713,049)			(2,713,049)	
<b>Adjustments</b>					
0051 Depreciation and Net Amortization	36,019			36,019	
0052 Provision for Uncollectible Accounts					
0053 Other Adjustments					
<b>Effect of Changes in Assets, Liabilities, Deferred Outflows and Deferred Inflows</b>					
0054 (Inc) Dec In Accounts Receivable (0120-0150)	(7,468)			(7,468)	
0055 Advances to Other Funds (0160)					
0056 (Inc) Dec in Inventories (0170)	(10,419)			(10,419)	
0057 (Inc) Dec in Prepaid Expenses (0180)					
0058 (Inc) Dec in Other Current or Noncurrent Assets					
0064 Deferred Outflows (0910)					
0059 Inc (Dec) in Accounts Payable (0400-0450)	(500,017)			(500,017)	
0060 Inc (Dec) in Accrued Salaries/Benefits (0461)					
0065 Inc (Dec) in Net Pension Liabilities (0570)	91,000			91,000	
0066 Inc (Dec) in Other Postemp Benefit Oblig (0560)	49,266			49,266	
0061 Inc (Dec) in Payroll Deductions/Withholding (0462)					
0062 Inc (Dec) in Unearned Revenue (0480)					
0063 Inc (Dec) in Other Current or Noncurrent Liabilities					
0067 Deferred Inflows (0950)	(2,784)			(2,784)	
<b>Total Adjustments</b>	<b>(\$344,403)</b>			<b>(\$344,403)</b>	
<b>Cash Provided By (Used for) Total</b>	<b>(\$3,057,452)</b>			<b>(\$3,057,452)</b>	

COMBINED STATEMENT OF CASH FLOWS  
SCHEDULE OF NONCASH INVESTING, CAPITAL, AND FINANCING ACTIVITIES

Explanation of Transaction and Balance Sheet Effect	Amount
<b>Total</b>	

LEA : 124151902 Coatesville Area SD

Printed 2/6/2018 2:59:10 PM

Amounts Expressed in Whole Dollars	<u>Private Purpose Trust</u> <u>(71)</u>	<u>Investment Trust</u> <u>(72)</u>	<u>Pension Trust</u> <u>(73)</u>	<u>Activity</u> <u>(81)</u>
<b>Assets And Deferred Outflows Of Resources</b>				
<b>Assets</b>				
0100 Cash and Cash Equivalents	114,387			126,436
0110 Investments	13,850			
0130 Due From Other Funds				
0147 Due from Component Unit				
0150 Other Receivables				
0170 Inventories				
0180 Prepaid Expenses (Expenditures)				
0190 Other Current Assets				
0220 Buildings and Building Improvements (Net)				
0230 Machinery, Equipment and Furniture (Net)				
<b>Total Assets</b>	<b>\$128,237</b>			<b>\$126,436</b>
0910 Deferred Outflows of Resources				
<b>Total Assets And Deferred Outflows Of Resources</b>	<b>\$128,237</b>			<b>\$126,436</b>

LEA : 124151902 Coatesville Area SD

Printed 2/6/2018 2:59:10 PM

Amounts Expressed in Whole Dollars	<u>Other Agency</u> <u>(89)</u>	<u>Discrete Component Units</u> <u>(98)</u>	<u>Discrete Component Units</u> <u>(99)</u>	<u>Total Fiduciary Funds</u>
<b>Assets And Deferred Outflows Of Resources</b>				
<b>Assets</b>				
0100 Cash and Cash Equivalents		178,103		418,926
0110 Investments				13,850
0130 Due From Other Funds				
0147 Due from Component Unit				
0150 Other Receivables				
0170 Inventories				
0180 Prepaid Expenses (Expenditures)				
0190 Other Current Assets				
0220 Buildings and Building Improvements (Net)				
0230 Machinery, Equipment and Furniture (Net)				
<b>Total Assets</b>		<b>\$178,103</b>		<b>\$432,776</b>
0910 Deferred Outflows of Resources				
<b>Total Assets And Deferred Outflows Of Resources</b>		<b>\$178,103</b>		<b>\$432,776</b>

LEA : 124151902 Coatesville Area SD

Printed 2/6/2018 2:59:10 PM

Amounts Expressed in Whole Dollars	<u>Private Purpose Trust</u> (71)	<u>Investment Trust</u> (72)	<u>Pension Trust</u> (73)	<u>Activity</u> (81)
<b>Liabilities, Deferred Inflows Of Resources And Net Position</b>				
<b>Liabilities</b>				
0400 Due to Other Funds				
0411 Due to Other Governments				
0412 Due to Primary Government				
0413 Due to Component Unit				
0420 Accounts Payable	1,035			126,436
0430 Contracts Payable				
0450 Short-Term Payables				
0461 Accrued Salaries and Benefits				
0462 Payroll Deductions and Withholding				
0480 Unearned Revenues				
0490 Other Current Liabilities				
<b>Total Liabilities</b>	<b>\$1,035</b>			<b>\$126,436</b>
0950 Deferred Inflows of Resources				
<b>Net Position</b>				
0791 Net Investment in Capital Assets				
0009 Restricted Net Position (0792 – 0798)				
0799 Unrestricted Net Position	127,202			
<b>Total Net Position</b>	<b>\$127,202</b>			
<b>Total Liabilities, Deferred Inflows Of Resources And Net Position</b>	<b>\$128,237</b>			<b>\$126,436</b>

LEA : 124151902 Coatesville Area SD

Printed 2/6/2018 2:59:10 PM

Amounts Expressed in Whole Dollars	<u>Other Agency</u> (89)	<u>Discrete Component Units</u> (98)	<u>Discrete Component Units</u> (99)	<u>Total Fiduciary Funds</u>
<b>Liabilities, Deferred Inflows Of Resources And Net Position</b>				
<b>Liabilities</b>				
0400 Due to Other Funds				
0411 Due to Other Governments				
0412 Due to Primary Government				
0413 Due to Component Unit				
0420 Accounts Payable	178,103			305,574
0430 Contracts Payable				
0450 Short-Term Payables				
0461 Accrued Salaries and Benefits				
0462 Payroll Deductions and Withholding				
0480 Unearned Revenues				
0490 Other Current Liabilities				
<b>Total Liabilities</b>	<b>\$178,103</b>			<b>\$305,574</b>
0950 Deferred Inflows of Resources				
<b>Net Position</b>				
0791 Net Investment in Capital Assets				
0009 Restricted Net Position (0792 – 0798)				
0799 Unrestricted Net Position				127,202
<b>Total Net Position</b>				<b>\$127,202</b>
<b>Total Liabilities, Deferred Inflows Of Resources And Net Position</b>	<b>\$178,103</b>			<b>\$432,776</b>



Amounts Expressed in Whole Dollars	<u>Private Purpose Trust</u> (71)	<u>Investment Trust</u> (72)	<u>Pension Trust</u> (73)	<u>Discrete Component</u> <u>Units</u> (98)	<u>Discrete Component</u> <u>Units</u> (99)	<u>Total Fiduciary</u> <u>Funds</u>
<b>Additions</b>						
0091 Gifts and Contributions	10,000					10,000
0092 Other Additions	695					695
<b>Deductions</b>						
0093 Scholarships Awarded	81,715					81,715
0094 Other Deductions						
<b>Change In Net Position</b>	<b>(\$71,020)</b>					<b>(\$71,020)</b>
0006 Net Position – Beginning of Fiscal Year	198,222					198,222
0007 Net Position Held in Trust for Pension Benefits						
<b>Net Position - End of Fiscal Year</b>	<b>\$127,202</b>					<b>\$127,202</b>

	<u>Revenue Reported In Current Year</u>	<u>Current Year Tax Accrual</u>	<u>Prior Year Tax Accrual</u>	<u>Taxes Collected In Current Year</u>
<b><u>Revenue from Local Sources</u></b>				
6111 Current Real Estate Taxes	89,025,803.60			89,025,803.60
6112 Interim Real Estate Taxes	157,178.06			157,178.06
6113 Public Utility Realty Taxes	108,237.64			108,237.64
6143 Current Act 511 Local Services Taxes	79,388.21			79,388.21
6151 Current Act 511 Earned Income Taxes	8,312,997.25			8,312,997.25
6153 Current Act 511 Real Estate Transfer Taxes	1,509,422.96			1,509,422.96
6411 Delinquent Real Estate Taxes	3,946,767.34			3,946,767.34
6500 Earnings on Investments	183,411.79			
6700 Revenues from LEA Activities	73,011.75			
6832 Federal IDEA Revenue Received as Pass Through	1,223,061.80			
6910 Rentals	236,268.83			
6920 Contributions and Donations from Private Sources	16,685.27			
6944 Receipts from Other LEAs in Pennsylvania - Education	248,983.64			
6991 Refunds of a Prior Year Expenditure	430,487.57			
6999 Other Revenues Not Specified Above	99,593.53			
<b>TOTAL Revenue from Local Sources</b>	<b>\$105,651,299.24</b>			<b>\$103,139,795.06</b>

**Revenue Reported  
In Current Year**

**Revenue from State Sources**

7110 Basic Education Funding	24,776,273.22		
7160 Tuition for Orphans Subsidy	234,068.56		
7271 Special Education funds for School-Aged Pupils	4,894,169.69		
7311 Pupil Transportation Subsidy	5,023,211.01		
7312 Nonpublic and Charter School Pupil Transportation Subsidy	1,153,075.00		
7320 Rental and Sinking Fund Payments / Building Reimbursement Subsidy	726,558.00		
7330 Health Services (Medical, Dental, Nurse, Act 25)	129,754.60		
7340 State Property Tax Reduction Allocation	3,907,350.89		
7505 Ready to Learn Block Grant	1,103,925.00		
7599 Other State Revenue Not Listed Elsewhere in the 7000 Series	5,800.00		
7810 State Share of Social Security and Medicare Taxes	1,411,210.95		
7820 State Share of Retirement Contributions	7,201,929.12		
<b>TOTAL Revenue from State Sources</b>	<b>\$50,567,326.04</b>		

**Revenue Reported  
In Current Year**

**Revenue from Federal Sources**

8110	Payments for Federally Impacted Areas	17,446.55		
8514	NCLB, Title I - Improving the Academic Achievement of the Disadvantaged	1,899,711.27		
8515	NCLB, Title II - Preparing, Training and Recruiting High Quality Teachers and Principals	322,996.29		
8516	NCLB, Title III - Language Instruction for Limited English Proficient and Immigrant Students	81,754.64		
8690	Other Restricted Federal Grants-in-Aid Through the Commonwealth of PA	10,960.00		
8810	School-Based Access Medicaid Reimbursement Program (SBAP) Reimbursements (Access)	2,331,148.92		
8820	Medical Assistance Reimbursement for Administrative Claiming (Quarterly) Program	95,027.68		
<b>TOTAL Revenue from Federal Sources</b>		<b>\$4,759,045.35</b>		
<b>TOTAL FROM ALL SOURCES</b>		<b>\$160,977,670.63</b>		<b>\$103,139,795.06</b>

Revenue from Local Sources	105,651,299.24
Revenue from State Sources	50,567,326.04
Revenue from Federal Sources	4,759,045.35
Other Financing Sources	
<b>TOTAL FROM ALL SOURCES</b>	<b>\$160,977,670.63</b>

General Fund (10)

	<u>Total</u>
<b>1000 Instruction</b>	
<b>100 Personnel Services – Salaries</b>	
100 Personnel Services – Salaries	34,841,474.76
<b>Total Personnel Services – Salaries</b>	<b>\$34,841,474.76</b>
<b>200 Personnel Services – Employee Benefits</b>	
220 Social Security Contributions	2,615,130.91
230 PSERS Retirement Contributions	10,417,663.14
250 Unemployment Compensation	23,538.14
260 Workers’ Compensation	314,977.39
270 Group Insurance – Self-Insurance	8,408,615.85
<b>Total Personnel Services – Employee Benefits</b>	<b>\$21,779,925.43</b>
<b>300 Purchased Professional and Technical Services</b>	
322 Professional Educational Services – Ius	11,596,149.00
323 Professional Educational Services – Other Educational Agencies	571.09
324 Professional Educational Services – Employee Training and Development Services	126,794.97
329 Professional Educational Services – Other	2,439,145.15
330 Other Professional Services	1,195,226.44
<b>Total Purchased Professional and Technical Services</b>	<b>\$15,357,886.65</b>
<b>400 Purchased Property Services</b>	
430 Repairs and Maintenance Services	4,432.74
440 Rentals	162,127.98
<b>Total Purchased Property Services</b>	<b>\$166,560.72</b>
<b>500 Other Purchased Services</b>	
510 Student Transportation Services	388,292.32
530 Communications	42.02
550 Printing and Binding	6,048.97
561 Tuition To Other School Districts Within the State	362,353.49
562 Tuition To Pennsylvania Charter Schools	33,988,573.94
563 Tuition To Nonpublic Schools	106,370.00
564 Tuition To Career and Technology Centers	2,630,736.00
566 Tuition To Institutions of Higher Education and Technical Institutes	117,408.00
567 Tuition To Approved Private Schools (APS) and PA Chartered Schools for the Deaf and Blind	2,877,266.06
568 Tuition To Private Residential Rehabilitative Institutions (PRRI) [In-State] and Detention Centers	159,075.23
580 Travel	8,205.51
591 Services Purchased Locally	362.26
597 Direct Payments To Intermediate Units for Institutionalized Childrens' Program	1,304.48
<b>Total Other Purchased Services</b>	<b>\$40,646,038.28</b>
<b>600 Supplies</b>	
610 General Supplies	542,343.83
640 Books and Periodicals	175,858.08
650 Supplies & Fees – Technology Related	16,051.75
<b>Total Supplies</b>	<b>\$734,253.66</b>
<b>700 Property</b>	
752 Capital Equipment – Original and Additional	9,671.88

LEA : 124151902 Coatesville Area SD

Printed 2/6/2018 2:59:15 PM

**General Fund (10)**

<b>1000 Instruction</b>	<u><b>Total</b></u>
<b>700 Property</b>	
762 Capitalized Equipment - Replacement	1,848.75
<b>Total Property</b>	<b>\$11,520.63</b>
<b>800 Other Objects</b>	
810 Dues and Fees	120.00
820 Claims and Judgments Against the LEA	215,260.49
<b>Total Other Objects</b>	<b>\$215,380.49</b>
<b>Total 1000 Instruction</b>	<b>\$113,753,040.62</b>

**General Fund (10)**

**1100 Regular Programs – Elementary / Secondary**

	<u>Elementary</u>	<u>Secondary</u>	<u>Federal</u>	<u>Total</u>
<b>100 Personnel Services – Salaries</b>				
100 Personnel Services – Salaries	13,707,227.57	12,896,353.28	1,881,113.01	28,484,693.86
<b>Total Personnel Services – Salaries</b>	<b>\$13,707,227.57</b>	<b>\$12,896,353.28</b>	<b>\$1,881,113.01</b>	<b>\$28,484,693.86</b>
<b>200 Personnel Services – Employee Benefits</b>				
220 Social Security Contributions	1,027,322.27	968,617.86	141,931.77	2,137,871.90
230 PSERS Retirement Contributions	4,096,632.13	3,876,177.99	563,000.71	8,535,810.83
250 Unemployment Compensation	4,412.73	7,955.51	2,041.73	14,409.97
260 Workers' Compensation	123,918.34	116,590.15	17,004.53	257,513.02
270 Group Insurance – Self-Insurance	3,421,936.59	3,119,747.17	439,170.04	6,980,853.80
<b>Total Personnel Services – Employee Benefits</b>	<b>\$8,674,222.06</b>	<b>\$8,089,088.68</b>	<b>\$1,163,148.78</b>	<b>\$17,926,459.52</b>
<b>300 Purchased Professional and Technical Services</b>				
322 Professional Educational Services – lus	421.27	141,150.47		141,571.74
324 Professional Educational Services – Employee Training and Development Services		12,039.14		12,039.14
329 Professional Educational Services – Other	531,482.22	379,249.23		910,731.45
330 Other Professional Services	34,728.92	16,774.74	32,100.03	83,603.69
<b>Total Purchased Professional and Technical Services</b>	<b>\$566,632.41</b>	<b>\$549,213.58</b>	<b>\$32,100.03</b>	<b>\$1,147,946.02</b>
<b>400 Purchased Property Services</b>				
430 Repairs and Maintenance Services	1,305.11	2,888.13		4,193.24
440 Rentals	80,520.06	78,856.32		159,376.38
<b>Total Purchased Property Services</b>	<b>\$81,825.17</b>	<b>\$81,744.45</b>		<b>\$163,569.62</b>
<b>500 Other Purchased Services</b>				
510 Student Transportation Services	5,838.55	8,352.23	708.48	14,899.26
550 Printing and Binding	6,048.97			6,048.97
561 Tuition To Other School Districts Within the State	93,919.33	45,364.86		139,284.19
562 Tuition To Pennsylvania Charter Schools	14,915,450.02	7,204,452.13		22,119,902.15
566 Tuition To Institutions of Higher Education and Technical Institutes		117,408.00		117,408.00
568 Tuition To Private Residential Rehabilitative Institutions (PRRI) [In-State] and Detention Centers	64,417.07	31,114.69		95,531.76
580 Travel		279.50	77.98	357.48
<b>Total Other Purchased Services</b>	<b>\$15,085,673.94</b>	<b>\$7,406,971.41</b>	<b>\$786.46</b>	<b>\$22,493,431.81</b>
<b>600 Supplies</b>				
610 General Supplies	124,597.63	166,341.12	177,090.20	468,028.95
640 Books and Periodicals	108,161.56	51,632.45	6,385.45	166,179.46
650 Supplies & Fees – Technology Related		2,188.14		2,188.14
<b>Total Supplies</b>	<b>\$232,759.19</b>	<b>\$220,161.71</b>	<b>\$183,475.65</b>	<b>\$636,396.55</b>
<b>700 Property</b>				
752 Capital Equipment – Original and Additional	373.38	773.00		1,146.38
762 Capitalized Equipment - Replacement		1,848.75		1,848.75
<b>Total Property</b>	<b>\$373.38</b>	<b>\$2,621.75</b>		<b>\$2,995.13</b>
<b>800 Other Objects</b>				
810 Dues and Fees	39.09	80.91		120.00
<b>Total Other Objects</b>	<b>\$39.09</b>	<b>\$80.91</b>		<b>\$120.00</b>
<b>Total 1100 Regular Programs – Elementary / Secondary</b>	<b>\$38,348,752.81</b>	<b>\$29,246,235.77</b>	<b>\$3,260,623.93</b>	<b>\$70,855,612.51</b>



**General Fund (10)**

**1110 Regular Programs**

	<u>Elementary</u>	<u>Secondary</u>	<u>Federal</u>	<u>Total</u>
<b>100 Personnel Services – Salaries</b>				
100 Personnel Services – Salaries	13,707,227.57	12,896,353.28		26,603,580.85
<b>Total Personnel Services – Salaries</b>	<b>\$13,707,227.57</b>	<b>\$12,896,353.28</b>		<b>\$26,603,580.85</b>
<b>200 Personnel Services – Employee Benefits</b>				
220 Social Security Contributions	1,027,322.27	968,617.86		1,995,940.13
230 PSERS Retirement Contributions	4,096,632.13	3,876,177.99		7,972,810.12
250 Unemployment Compensation	4,412.73	7,955.51		12,368.24
260 Workers' Compensation	123,918.34	116,590.15		240,508.49
270 Group Insurance – Self-Insurance	3,421,936.59	3,119,747.17		6,541,683.76
<b>Total Personnel Services – Employee Benefits</b>	<b>\$8,674,222.06</b>	<b>\$8,089,088.68</b>		<b>\$16,763,310.74</b>
<b>300 Purchased Professional and Technical Services</b>				
322 Professional Educational Services – lus	421.27	141,150.47		141,571.74
324 Professional Educational Services – Employee Training and Development Services		12,039.14		12,039.14
329 Professional Educational Services – Other	531,482.22	379,249.23		910,731.45
330 Other Professional Services	34,728.92	16,774.74		51,503.66
<b>Total Purchased Professional and Technical Services</b>	<b>\$566,632.41</b>	<b>\$549,213.58</b>		<b>\$1,115,845.99</b>
<b>400 Purchased Property Services</b>				
430 Repairs and Maintenance Services	1,305.11	2,888.13		4,193.24
440 Rentals	80,520.06	78,856.32		159,376.38
<b>Total Purchased Property Services</b>	<b>\$81,825.17</b>	<b>\$81,744.45</b>		<b>\$163,569.62</b>
<b>500 Other Purchased Services</b>				
510 Student Transportation Services	5,838.55	8,352.23		14,190.78
550 Printing and Binding	6,048.97			6,048.97
561 Tuition To Other School Districts Within the State	93,919.33	45,364.86		139,284.19
562 Tuition To Pennsylvania Charter Schools	14,915,450.02	7,204,452.13		22,119,902.15
566 Tuition To Institutions of Higher Education and Technical Institutes		117,408.00		117,408.00
568 Tuition To Private Residential Rehabilitative Institutions (PRRI) [In-State] and Detention Centers	64,417.07	31,114.69		95,531.76
580 Travel		279.50		279.50
<b>Total Other Purchased Services</b>	<b>\$15,085,673.94</b>	<b>\$7,406,971.41</b>		<b>\$22,492,645.35</b>
<b>600 Supplies</b>				
610 General Supplies	124,597.63	166,341.12		290,938.75
640 Books and Periodicals	108,161.56	51,632.45		159,794.01
650 Supplies & Fees – Technology Related		2,188.14		2,188.14
<b>Total Supplies</b>	<b>\$232,759.19</b>	<b>\$220,161.71</b>		<b>\$452,920.90</b>
<b>700 Property</b>				
752 Capital Equipment – Original and Additional	373.38	773.00		1,146.38
762 Capitalized Equipment - Replacement		1,848.75		1,848.75
<b>Total Property</b>	<b>\$373.38</b>	<b>\$2,621.75</b>		<b>\$2,995.13</b>
<b>800 Other Objects</b>				
810 Dues and Fees	39.09	80.91		120.00
<b>Total Other Objects</b>	<b>\$39.09</b>	<b>\$80.91</b>		<b>\$120.00</b>
<b>Total 1110 Regular Programs</b>	<b>\$38,348,752.81</b>	<b>\$29,246,235.77</b>		<b>\$67,594,988.58</b>

**General Fund (10)**

	<u>Elementary</u>	<u>Secondary</u>	<u>Federal</u>	<u>Total</u>
<b>1190 Federally-Funded Regular Programs</b>				
<b>100 Personnel Services – Salaries</b>				
100 Personnel Services – Salaries			1,881,113.01	1,881,113.01
<b>Total Personnel Services – Salaries</b>			<b>\$1,881,113.01</b>	<b>\$1,881,113.01</b>
<b>200 Personnel Services – Employee Benefits</b>				
220 Social Security Contributions			141,931.77	141,931.77
230 PSERS Retirement Contributions			563,000.71	563,000.71
250 Unemployment Compensation			2,041.73	2,041.73
260 Workers' Compensation			17,004.53	17,004.53
270 Group Insurance – Self-Insurance			439,170.04	439,170.04
<b>Total Personnel Services – Employee Benefits</b>			<b>\$1,163,148.78</b>	<b>\$1,163,148.78</b>
<b>300 Purchased Professional and Technical Services</b>				
330 Other Professional Services			32,100.03	32,100.03
<b>Total Purchased Professional and Technical Services</b>			<b>\$32,100.03</b>	<b>\$32,100.03</b>
<b>500 Other Purchased Services</b>				
510 Student Transportation Services			708.48	708.48
580 Travel			77.98	77.98
<b>Total Other Purchased Services</b>			<b>\$786.46</b>	<b>\$786.46</b>
<b>600 Supplies</b>				
610 General Supplies			177,090.20	177,090.20
640 Books and Periodicals			6,385.45	6,385.45
<b>Total Supplies</b>			<b>\$183,475.65</b>	<b>\$183,475.65</b>
<b>Total 1190 Federally-Funded Regular Programs</b>			<b>\$3,260,623.93</b>	<b>\$3,260,623.93</b>

**General Fund (10)**

**1200 Special Programs – Elementary / Secondary**

	<u>Elementary</u>	<u>Secondary</u>	<u>Federal</u>	<u>Total</u>
<b>100 Personnel Services – Salaries</b>				
100 Personnel Services – Salaries	2,901,371.92	2,395,120.58	241,485.00	5,537,977.50
<b>Total Personnel Services – Salaries</b>	<b>\$2,901,371.92</b>	<b>\$2,395,120.58</b>	<b>\$241,485.00</b>	<b>\$5,537,977.50</b>
<b>200 Personnel Services – Employee Benefits</b>				
220 Social Security Contributions	217,837.32	179,860.40	18,110.23	415,807.95
230 PSERS Retirement Contributions	863,752.77	703,282.56	71,809.13	1,638,844.46
250 Unemployment Compensation	4,554.66	3,565.19	210.85	8,330.70
260 Workers' Compensation	26,227.71	21,651.58	2,182.83	50,062.12
270 Group Insurance – Self-Insurance	671,588.03	539,883.60	55,509.48	1,266,981.11
<b>Total Personnel Services – Employee Benefits</b>	<b>\$1,783,960.49</b>	<b>\$1,448,243.33</b>	<b>\$147,822.52</b>	<b>\$3,380,026.34</b>
<b>300 Purchased Professional and Technical Services</b>				
322 Professional Educational Services – lus	7,565,310.43	2,670,247.28	1,219,019.55	11,454,577.26
323 Professional Educational Services – Other Educational Agencies	385.09	186.00		571.09
324 Professional Educational Services – Employee Training and Development Services			2,688.00	2,688.00
329 Professional Educational Services – Other	1,030,667.98	497,745.72		1,528,413.70
330 Other Professional Services	746,518.37	360,582.88	4,521.50	1,111,622.75
<b>Total Purchased Professional and Technical Services</b>	<b>\$9,342,881.87</b>	<b>\$3,528,761.88</b>	<b>\$1,226,229.05</b>	<b>\$14,097,872.80</b>
<b>500 Other Purchased Services</b>				
510 Student Transportation Services	251,778.94	121,614.12		373,393.06
530 Communications	28.33	13.69		42.02
561 Tuition To Other School Districts Within the State	102,532.49	49,525.18		152,057.67
562 Tuition To Pennsylvania Charter Schools	8,003,045.39	3,865,626.40		11,868,671.79
563 Tuition To Nonpublic Schools	71,725.29	34,644.71		106,370.00
567 Tuition To Approved Private Schools (APS) and PA Chartered Schools for the Deaf and Blind	1,940,140.50	937,125.56		2,877,266.06
568 Tuition To Private Residential Rehabilitative Institutions (PRRI) [In-State] and Detention Centers	42,847.36	20,696.11		63,543.47
580 Travel	5,291.93	2,556.10		7,848.03
591 Services Purchased Locally	244.27	117.99		362.26
597 Direct Payments To Intermediate Units for Institutionalized Childrens' Program	879.61	424.87		1,304.48
<b>Total Other Purchased Services</b>	<b>\$10,418,514.11</b>	<b>\$5,032,344.73</b>		<b>\$15,450,858.84</b>
<b>600 Supplies</b>				
610 General Supplies	13,876.53	44,603.81	2,385.63	60,865.97
640 Books and Periodicals	925.59	447.08		1,372.67
650 Supplies & Fees – Technology Related	8,801.02	4,251.06		13,052.08
<b>Total Supplies</b>	<b>\$23,603.14</b>	<b>\$49,301.95</b>	<b>\$2,385.63</b>	<b>\$75,290.72</b>
<b>700 Property</b>				
752 Capital Equipment – Original and Additional	5,748.74	2,776.76		8,525.50
<b>Total Property</b>	<b>\$5,748.74</b>	<b>\$2,776.76</b>		<b>\$8,525.50</b>
<b>800 Other Objects</b>				
820 Claims and Judgments Against the LEA	145,150.15	70,110.34		215,260.49
<b>Total Other Objects</b>	<b>\$145,150.15</b>	<b>\$70,110.34</b>		<b>\$215,260.49</b>
<b>Total 1200 Special Programs – Elementary / Secondary</b>	<b>\$24,621,230.42</b>	<b>\$12,526,659.57</b>	<b>\$1,617,922.20</b>	<b>\$38,765,812.19</b>

**General Fund (10)**

**1210 Life Skills Support**

	<u>Elementary</u>	<u>Secondary</u>	<u>Federal</u>	<u>Total</u>
<b>100 Personnel Services – Salaries</b>				
100 Personnel Services – Salaries	154,428.03	230,707.66		385,135.69
<b>Total Personnel Services – Salaries</b>	<b>\$154,428.03</b>	<b>\$230,707.66</b>		<b>\$385,135.69</b>
<b>200 Personnel Services – Employee Benefits</b>				
220 Social Security Contributions	11,610.54	17,577.96		29,188.50
230 PSERS Retirement Contributions	46,374.79	69,281.50		115,656.29
250 Unemployment Compensation	157.32	34.65		191.97
260 Workers' Compensation	1,395.99	2,085.61		3,481.60
270 Group Insurance – Self-Insurance	46,990.15	17,742.72		64,732.87
<b>Total Personnel Services – Employee Benefits</b>	<b>\$106,528.79</b>	<b>\$106,722.44</b>		<b>\$213,251.23</b>
<b>300 Purchased Professional and Technical Services</b>				
322 Professional Educational Services – lus	38,662.16	18,674.57		57,336.73
<b>Total Purchased Professional and Technical Services</b>	<b>\$38,662.16</b>	<b>\$18,674.57</b>		<b>\$57,336.73</b>
<b>Total 1210 Life Skills Support</b>	<b>\$299,618.98</b>	<b>\$356,104.67</b>		<b>\$655,723.65</b>

**General Fund (10)**

	<u>Elementary</u>	<u>Secondary</u>	<u>Federal</u>	<u>Total</u>
<b>1220 Sensory Support</b>				
<b>100 Personnel Services – Salaries</b>				
100 Personnel Services – Salaries	98,480.50			98,480.50
<b>Total Personnel Services – Salaries</b>	<b>\$98,480.50</b>			<b>\$98,480.50</b>
<b>200 Personnel Services – Employee Benefits</b>				
220 Social Security Contributions	7,492.95			7,492.95
230 PSERS Retirement Contributions	29,573.62			29,573.62
250 Unemployment Compensation	1.15			1.15
260 Workers' Compensation	890.17			890.17
270 Group Insurance – Self-Insurance	15,651.11			15,651.11
<b>Total Personnel Services – Employee Benefits</b>	<b>\$53,609.00</b>			<b>\$53,609.00</b>
<b>300 Purchased Professional and Technical Services</b>				
322 Professional Educational Services – lus	293,687.37	141,856.70		435,544.07
329 Professional Educational Services – Other	425.28	205.42		630.70
330 Other Professional Services	402,067.88	194,206.59		596,274.47
<b>Total Purchased Professional and Technical Services</b>	<b>\$696,180.53</b>	<b>\$336,268.71</b>		<b>\$1,032,449.24</b>
<b>500 Other Purchased Services</b>				
580 Travel	272.89	131.81		404.70
<b>Total Other Purchased Services</b>	<b>\$272.89</b>	<b>\$131.81</b>		<b>\$404.70</b>
<b>600 Supplies</b>				
610 General Supplies	1,550.34	748.84		2,299.18
<b>Total Supplies</b>	<b>\$1,550.34</b>	<b>\$748.84</b>		<b>\$2,299.18</b>
<b>Total 1220 Sensory Support</b>	<b>\$850,093.26</b>	<b>\$337,149.36</b>		<b>\$1,187,242.62</b>

**General Fund (10)**

**1230 Emotional Support**

	<u>Elementary</u>	<u>Secondary</u>	<u>Federal</u>	<u>Total</u>
<b>100 Personnel Services – Salaries</b>				
100 Personnel Services – Salaries	163,728.61	161,808.18	241,485.00	567,021.79
<b>Total Personnel Services – Salaries</b>	<b>\$163,728.61</b>	<b>\$161,808.18</b>	<b>\$241,485.00</b>	<b>\$567,021.79</b>
<b>200 Personnel Services – Employee Benefits</b>				
220 Social Security Contributions	12,278.88	12,164.40	18,110.23	42,553.51
230 PSERS Retirement Contributions	47,477.12	47,559.48	71,809.13	166,845.73
250 Unemployment Compensation	147.88	158.10	210.85	516.83
260 Workers' Compensation	1,480.03	1,462.69	2,182.83	5,125.55
270 Group Insurance – Self-Insurance	27,632.38	20,193.18	55,509.48	103,335.04
<b>Total Personnel Services – Employee Benefits</b>	<b>\$89,016.29</b>	<b>\$81,537.85</b>	<b>\$147,822.52</b>	<b>\$318,376.66</b>
<b>300 Purchased Professional and Technical Services</b>				
322 Professional Educational Services – lus	2,830,358.87	1,367,118.33		4,197,477.20
323 Professional Educational Services – Other Educational Agencies	385.09	186.00		571.09
329 Professional Educational Services – Other	383.00	185.00		568.00
<b>Total Purchased Professional and Technical Services</b>	<b>\$2,831,126.96</b>	<b>\$1,367,489.33</b>		<b>\$4,198,616.29</b>
<b>500 Other Purchased Services</b>				
563 Tuition To Nonpublic Schools	71,725.29	34,644.71		106,370.00
591 Services Purchased Locally	244.27	117.99		362.26
<b>Total Other Purchased Services</b>	<b>\$71,969.56</b>	<b>\$34,762.70</b>		<b>\$106,732.26</b>
<b>600 Supplies</b>				
610 General Supplies	657.71	317.69		975.40
<b>Total Supplies</b>	<b>\$657.71</b>	<b>\$317.69</b>		<b>\$975.40</b>
<b>Total 1230 Emotional Support</b>	<b>\$3,156,499.13</b>	<b>\$1,645,915.75</b>	<b>\$389,307.52</b>	<b>\$5,191,722.40</b>

**General Fund (10)**

**1240 Academic Support**

	<u>Elementary</u>	<u>Secondary</u>	<u>Federal</u>	<u>Total</u>
<b>100 Personnel Services – Salaries</b>				
100 Personnel Services – Salaries	2,440,928.96	1,980,796.09		4,421,725.05
<b>Total Personnel Services – Salaries</b>	<b>\$2,440,928.96</b>	<b>\$1,980,796.09</b>		<b>\$4,421,725.05</b>
<b>200 Personnel Services – Employee Benefits</b>				
220 Social Security Contributions	183,391.53	148,513.28		331,904.81
230 PSERS Retirement Contributions	727,279.18	579,944.01		1,307,223.19
250 Unemployment Compensation	4,089.36	3,294.80		7,384.16
260 Workers' Compensation	22,065.55	17,906.13		39,971.68
270 Group Insurance – Self-Insurance	556,810.83	488,831.77		1,045,642.60
<b>Total Personnel Services – Employee Benefits</b>	<b>\$1,493,636.45</b>	<b>\$1,238,489.99</b>		<b>\$2,732,126.44</b>
<b>300 Purchased Professional and Technical Services</b>				
322 Professional Educational Services – lus	1,202,493.53	580,827.74		1,783,321.27
324 Professional Educational Services – Employee Training and Development Services			2,688.00	2,688.00
329 Professional Educational Services – Other	878,310.47	424,154.08		1,302,464.55
330 Other Professional Services	11,676.37	5,639.92	4,521.50	21,837.79
<b>Total Purchased Professional and Technical Services</b>	<b>\$2,092,480.37</b>	<b>\$1,010,621.74</b>	<b>\$7,209.50</b>	<b>\$3,110,311.61</b>
<b>500 Other Purchased Services</b>				
510 Student Transportation Services	251,778.94	121,614.12		373,393.06
580 Travel	5,019.04	2,424.29		7,443.33
<b>Total Other Purchased Services</b>	<b>\$256,797.98</b>	<b>\$124,038.41</b>		<b>\$380,836.39</b>
<b>600 Supplies</b>				
610 General Supplies	7,663.48	41,602.78	2,385.63	51,651.89
640 Books and Periodicals	925.59	447.08		1,372.67
650 Supplies & Fees – Technology Related	8,801.02	4,251.06		13,052.08
<b>Total Supplies</b>	<b>\$17,390.09</b>	<b>\$46,300.92</b>	<b>\$2,385.63</b>	<b>\$66,076.64</b>
<b>700 Property</b>				
752 Capital Equipment – Original and Additional	5,748.74	2,776.76		8,525.50
<b>Total Property</b>	<b>\$5,748.74</b>	<b>\$2,776.76</b>		<b>\$8,525.50</b>
<b>800 Other Objects</b>				
820 Claims and Judgments Against the LEA	145,150.15	70,110.34		215,260.49
<b>Total Other Objects</b>	<b>\$145,150.15</b>	<b>\$70,110.34</b>		<b>\$215,260.49</b>
<b>Total 1240 Academic Support</b>	<b>\$6,452,132.74</b>	<b>\$4,473,134.25</b>	<b>\$9,595.13</b>	<b>\$10,934,862.12</b>

**General Fund (10)**

**1241 Learning Support – Public**

	<u>Elementary</u>	<u>Secondary</u>	<u>Federal</u>	<u>Total</u>
<b>100 Personnel Services – Salaries</b>				
100 Personnel Services – Salaries	2,257,231.40	1,821,420.71		4,078,652.11
<b>Total Personnel Services – Salaries</b>	<b>\$2,257,231.40</b>	<b>\$1,821,420.71</b>		<b>\$4,078,652.11</b>
<b>200 Personnel Services – Employee Benefits</b>				
220 Social Security Contributions	169,794.84	136,626.26		306,421.10
230 PSERS Retirement Contributions	672,114.63	532,083.71		1,204,198.34
250 Unemployment Compensation	3,989.40	3,226.23		7,215.63
260 Workers' Compensation	20,405.00	16,465.29		36,870.29
270 Group Insurance – Self-Insurance	505,044.08	443,368.60		948,412.68
<b>Total Personnel Services – Employee Benefits</b>	<b>\$1,371,347.95</b>	<b>\$1,131,770.09</b>		<b>\$2,503,118.04</b>
<b>300 Purchased Professional and Technical Services</b>				
322 Professional Educational Services – lus	1,202,493.53	580,827.74		1,783,321.27
324 Professional Educational Services – Employee Training and Development Services			2,688.00	2,688.00
329 Professional Educational Services – Other	878,130.47	424,154.08		1,302,284.55
330 Other Professional Services	11,676.37	5,639.92	4,521.50	21,837.79
<b>Total Purchased Professional and Technical Services</b>	<b>\$2,092,300.37</b>	<b>\$1,010,621.74</b>	<b>\$7,209.50</b>	<b>\$3,110,131.61</b>
<b>500 Other Purchased Services</b>				
510 Student Transportation Services	249,815.38	120,665.68		370,481.06
580 Travel	5,019.04	2,424.29		7,443.33
<b>Total Other Purchased Services</b>	<b>\$254,834.42</b>	<b>\$123,089.97</b>		<b>\$377,924.39</b>
<b>600 Supplies</b>				
610 General Supplies	7,655.54	40,801.34	2,385.63	50,842.51
640 Books and Periodicals	925.59	447.08		1,372.67
650 Supplies & Fees – Technology Related	8,801.02	4,251.06		13,052.08
<b>Total Supplies</b>	<b>\$17,382.15</b>	<b>\$45,499.48</b>	<b>\$2,385.63</b>	<b>\$65,267.26</b>
<b>700 Property</b>				
752 Capital Equipment – Original and Additional	4,504.66	2,175.84		6,680.50
<b>Total Property</b>	<b>\$4,504.66</b>	<b>\$2,175.84</b>		<b>\$6,680.50</b>
<b>800 Other Objects</b>				
820 Claims and Judgments Against the LEA	145,150.15	70,110.34		215,260.49
<b>Total Other Objects</b>	<b>\$145,150.15</b>	<b>\$70,110.34</b>		<b>\$215,260.49</b>
<b>Total 1241 Learning Support – Public</b>	<b>\$6,142,751.10</b>	<b>\$4,204,688.17</b>	<b>\$9,595.13</b>	<b>\$10,357,034.40</b>



**General Fund (10)**

**1243 Gifted Support**

	<u>Elementary</u>	<u>Secondary</u>	<u>Federal</u>	<u>Total</u>
<b>100 Personnel Services – Salaries</b>				
100 Personnel Services – Salaries	183,697.56	159,375.38		343,072.94
<b>Total Personnel Services – Salaries</b>	<b>\$183,697.56</b>	<b>\$159,375.38</b>		<b>\$343,072.94</b>
<b>200 Personnel Services – Employee Benefits</b>				
220 Social Security Contributions	13,596.69	11,887.02		25,483.71
230 PSERS Retirement Contributions	55,164.55	47,860.30		103,024.85
250 Unemployment Compensation	99.96	68.57		168.53
260 Workers' Compensation	1,660.55	1,440.84		3,101.39
270 Group Insurance – Self-Insurance	51,766.75	45,463.17		97,229.92
<b>Total Personnel Services – Employee Benefits</b>	<b>\$122,288.50</b>	<b>\$106,719.90</b>		<b>\$229,008.40</b>
<b>300 Purchased Professional and Technical Services</b>				
329 Professional Educational Services – Other	180.00			180.00
<b>Total Purchased Professional and Technical Services</b>	<b>\$180.00</b>			<b>\$180.00</b>
<b>500 Other Purchased Services</b>				
510 Student Transportation Services	1,963.56	948.44		2,912.00
<b>Total Other Purchased Services</b>	<b>\$1,963.56</b>	<b>\$948.44</b>		<b>\$2,912.00</b>
<b>600 Supplies</b>				
610 General Supplies	7.94	801.44		809.38
<b>Total Supplies</b>	<b>\$7.94</b>	<b>\$801.44</b>		<b>\$809.38</b>
<b>700 Property</b>				
752 Capital Equipment – Original and Additional	1,244.08	600.92		1,845.00
<b>Total Property</b>	<b>\$1,244.08</b>	<b>\$600.92</b>		<b>\$1,845.00</b>
<b>Total 1243 Gifted Support</b>	<b>\$309,381.64</b>	<b>\$268,446.08</b>		<b>\$577,827.72</b>

General Fund (10)

1270 Multi-Handicapped Support

300 Purchased Professional and Technical Services

	<u>Elementary</u>	<u>Secondary</u>	<u>Federal</u>	<u>Total</u>
322 Professional Educational Services – lus	(44,527.10)	(21,507.46)	1,219,019.55	1,152,984.99
329 Professional Educational Services – Other	151,549.23	73,201.22		224,750.45
330 Other Professional Services	89,395.31	43,179.67		132,574.98
<b>Total Purchased Professional and Technical Services</b>	<b>\$196,417.44</b>	<b>\$94,873.43</b>	<b>\$1,219,019.55</b>	<b>\$1,510,310.42</b>
<b>Total 1270 Multi-Handicapped Support</b>	<b>\$196,417.44</b>	<b>\$94,873.43</b>	<b>\$1,219,019.55</b>	<b>\$1,510,310.42</b>

General Fund (10)

1280 Early Intervention Support

300 Purchased Professional and Technical Services

322 Professional Educational Services – lus

**Total Purchased Professional and Technical Services**

**Total 1280 Early Intervention Support**

Elementary

Secondary

Federal

Total

2,037,070.51

2,037,070.51

**\$2,037,070.51**

**\$2,037,070.51**

**\$2,037,070.51**

**\$2,037,070.51**

**General Fund (10)**

**1290 Special Programs - Other Support**

	<u>Elementary</u>	<u>Secondary</u>	<u>Federal</u>	<u>Total</u>
<b>100 Personnel Services – Salaries</b>				
100 Personnel Services – Salaries	43,805.82	21,808.65		65,614.47
<b>Total Personnel Services – Salaries</b>	<b>\$43,805.82</b>	<b>\$21,808.65</b>		<b>\$65,614.47</b>
<b>200 Personnel Services – Employee Benefits</b>				
220 Social Security Contributions	3,063.42	1,604.76		4,668.18
230 PSERS Retirement Contributions	13,048.06	6,497.57		19,545.63
250 Unemployment Compensation	158.95	77.64		236.59
260 Workers' Compensation	395.97	197.15		593.12
270 Group Insurance – Self-Insurance	24,503.56	13,115.93		37,619.49
<b>Total Personnel Services – Employee Benefits</b>	<b>\$41,169.96</b>	<b>\$21,493.05</b>		<b>\$62,663.01</b>
<b>300 Purchased Professional and Technical Services</b>				
322 Professional Educational Services – lus	1,207,565.09	583,277.40		1,790,842.49
330 Other Professional Services	243,378.81	117,556.70		360,935.51
<b>Total Purchased Professional and Technical Services</b>	<b>\$1,450,943.90</b>	<b>\$700,834.10</b>		<b>\$2,151,778.00</b>
<b>500 Other Purchased Services</b>				
530 Communications	28.33	13.69		42.02
561 Tuition To Other School Districts Within the State	102,532.49	49,525.18		152,057.67
562 Tuition To Pennsylvania Charter Schools	8,003,045.39	3,865,626.40		11,868,671.79
567 Tuition To Approved Private Schools (APS) and PA Chartered Schools for the Deaf and Blind	1,940,140.50	937,125.56		2,877,266.06
568 Tuition To Private Residential Rehabilitative Institutions (PRRI) [In-State] and Detention Centers	42,847.36	20,696.11		63,543.47
597 Direct Payments To Intermediate Units for Institutionalized Childrens' Program	879.61	424.87		1,304.48
<b>Total Other Purchased Services</b>	<b>\$10,089,473.68</b>	<b>\$4,873,411.81</b>		<b>\$14,962,885.49</b>
<b>600 Supplies</b>				
610 General Supplies	4,005.00	1,934.50		5,939.50
<b>Total Supplies</b>	<b>\$4,005.00</b>	<b>\$1,934.50</b>		<b>\$5,939.50</b>
<b>Total 1290 Special Programs - Other Support</b>	<b>\$11,629,398.36</b>	<b>\$5,619,482.11</b>		<b>\$17,248,880.47</b>

**General Fund (10)**

**1300 Vocational Education**

	<u>Elementary</u>	<u>Secondary</u>	<u>Federal</u>	<u>Total</u>
<b>100 Personnel Services – Salaries</b>				
100 Personnel Services – Salaries		423,597.92		423,597.92
<b>Total Personnel Services – Salaries</b>		<b>\$423,597.92</b>		<b>\$423,597.92</b>
<b>200 Personnel Services – Employee Benefits</b>				
220 Social Security Contributions		32,125.67		32,125.67
230 PSERS Retirement Contributions		127,206.61		127,206.61
250 Unemployment Compensation		50.79		50.79
260 Workers' Compensation		3,829.28		3,829.28
270 Group Insurance – Self-Insurance		67,854.20		67,854.20
<b>Total Personnel Services – Employee Benefits</b>		<b>\$231,066.55</b>		<b>\$231,066.55</b>
<b>400 Purchased Property Services</b>				
430 Repairs and Maintenance Services		239.50		239.50
<b>Total Purchased Property Services</b>		<b>\$239.50</b>		<b>\$239.50</b>
<b>500 Other Purchased Services</b>				
564 Tuition To Career and Technology Centers		2,630,736.00		2,630,736.00
<b>Total Other Purchased Services</b>		<b>\$2,630,736.00</b>		<b>\$2,630,736.00</b>
<b>600 Supplies</b>				
610 General Supplies		13,448.91		13,448.91
640 Books and Periodicals		8,305.95		8,305.95
650 Supplies & Fees – Technology Related		811.53		811.53
<b>Total Supplies</b>		<b>\$22,566.39</b>		<b>\$22,566.39</b>
<b>Total 1300 Vocational Education</b>		<b>\$3,308,206.36</b>		<b>\$3,308,206.36</b>

**General Fund (10)**

	<u>Elementary</u>	<u>Secondary</u>	<u>Federal</u>	<u>Total</u>
<b>1400 Other Instructional Programs – Elementary / Secondary</b>				
<b>100 Personnel Services – Salaries</b>				
100 Personnel Services – Salaries	1,846.43	125,501.25		127,347.68
<b>Total Personnel Services – Salaries</b>	<b>\$1,846.43</b>	<b>\$125,501.25</b>		<b>\$127,347.68</b>
<b>200 Personnel Services – Employee Benefits</b>				
220 Social Security Contributions	140.96	9,324.24		9,465.20
230 PSERS Retirement Contributions	554.48	37,688.00		38,242.48
250 Unemployment Compensation	1.10	52.26		53.36
260 Workers' Compensation	16.68	1,134.68		1,151.36
270 Group Insurance – Self-Insurance		49,709.69		49,709.69
<b>Total Personnel Services – Employee Benefits</b>	<b>\$713.22</b>	<b>\$97,908.87</b>		<b>\$98,622.09</b>
<b>400 Purchased Property Services</b>				
440 Rentals	1,855.40	896.20		2,751.60
<b>Total Purchased Property Services</b>	<b>\$1,855.40</b>	<b>\$896.20</b>		<b>\$2,751.60</b>
<b>500 Other Purchased Services</b>				
561 Tuition To Other School Districts Within the State	47,883.14	23,128.49		71,011.63
<b>Total Other Purchased Services</b>	<b>\$47,883.14</b>	<b>\$23,128.49</b>		<b>\$71,011.63</b>
<b>Total 1400 Other Instructional Programs – Elementary / Secondary</b>	<b>\$52,298.19</b>	<b>\$247,434.81</b>		<b>\$299,733.00</b>

**General Fund (10)**

	<u>Elementary</u>	<u>Secondary</u>	<u>Federal</u>	<u>Total</u>
<b>1430 Homebound Instruction</b>				
<b>100 Personnel Services – Salaries</b>				
100 Personnel Services – Salaries	1,846.43	5,562.07		7,408.50
<b>Total Personnel Services – Salaries</b>	<b>\$1,846.43</b>	<b>\$5,562.07</b>		<b>\$7,408.50</b>
<b>200 Personnel Services – Employee Benefits</b>				
220 Social Security Contributions	140.96	419.93		560.89
230 PSERS Retirement Contributions	554.48	1,670.30		2,224.78
250 Unemployment Compensation	1.10	5.67		6.77
260 Workers' Compensation	16.68	50.27		66.95
<b>Total Personnel Services – Employee Benefits</b>	<b>\$713.22</b>	<b>\$2,146.17</b>		<b>\$2,859.39</b>
<b>Total 1430 Homebound Instruction</b>	<b>\$2,559.65</b>	<b>\$7,708.24</b>		<b>\$10,267.89</b>

**General Fund (10)**

	<u>Elementary</u>	<u>Secondary</u>	<u>Federal</u>	<u>Total</u>
<b>1440 Alternative Regular Education Programs</b>				
<b>100 Personnel Services – Salaries</b>				
100 Personnel Services – Salaries		119,939.18		119,939.18
<b>Total Personnel Services – Salaries</b>		<b>\$119,939.18</b>		<b>\$119,939.18</b>
<b>200 Personnel Services – Employee Benefits</b>				
220 Social Security Contributions		8,904.31		8,904.31
230 PSERS Retirement Contributions		36,017.70		36,017.70
250 Unemployment Compensation		46.59		46.59
260 Workers' Compensation		1,084.41		1,084.41
270 Group Insurance – Self-Insurance		49,709.69		49,709.69
<b>Total Personnel Services – Employee Benefits</b>		<b>\$95,762.70</b>		<b>\$95,762.70</b>
<b>400 Purchased Property Services</b>				
440 Rentals	1,855.40	896.20		2,751.60
<b>Total Purchased Property Services</b>	<b>\$1,855.40</b>	<b>\$896.20</b>		<b>\$2,751.60</b>
<b>500 Other Purchased Services</b>				
561 Tuition To Other School Districts Within the State	47,883.14	23,128.49		71,011.63
<b>Total Other Purchased Services</b>	<b>\$47,883.14</b>	<b>\$23,128.49</b>		<b>\$71,011.63</b>
<b>Total 1440 Alternative Regular Education Programs</b>	<b>\$49,738.54</b>	<b>\$239,726.57</b>		<b>\$289,465.11</b>



LEA : 124151902 Coatesville Area SD

Printed 2/6/2018 2:59:15 PM

General Fund (10)

1441 Adjudicated / Court-Placed Programs

500 Other Purchased Services

561 Tuition To Other School Districts Within the State

Total Other Purchased Services

Total 1441 Adjudicated / Court-Placed Programs

	<u>Elementary</u>	<u>Secondary</u>	<u>Federal</u>	<u>Total</u>
561 Tuition To Other School Districts Within the State	47,883.14	23,128.49		71,011.63
<b>Total Other Purchased Services</b>	<b>\$47,883.14</b>	<b>\$23,128.49</b>		<b>\$71,011.63</b>
<b>Total 1441 Adjudicated / Court-Placed Programs</b>	<b>\$47,883.14</b>	<b>\$23,128.49</b>		<b>\$71,011.63</b>

**General Fund (10)**

**1442 Alternative Education Programs**

**100 Personnel Services – Salaries**

	<u>Elementary</u>	<u>Secondary</u>	<u>Federal</u>	<u>Total</u>
100 Personnel Services – Salaries		119,939.18		119,939.18
<b>Total Personnel Services – Salaries</b>		<b>\$119,939.18</b>		<b>\$119,939.18</b>

**Total Personnel Services – Salaries**

**200 Personnel Services – Employee Benefits**

220 Social Security Contributions		8,904.31		8,904.31
230 PSERS Retirement Contributions		36,017.70		36,017.70
250 Unemployment Compensation		46.59		46.59
260 Workers' Compensation		1,084.41		1,084.41
270 Group Insurance – Self-Insurance		49,709.69		49,709.69
<b>Total Personnel Services – Employee Benefits</b>		<b>\$95,762.70</b>		<b>\$95,762.70</b>

**Total Personnel Services – Employee Benefits**

**400 Purchased Property Services**

440 Rentals	1,855.40	896.20		2,751.60
<b>Total Purchased Property Services</b>	<b>\$1,855.40</b>	<b>\$896.20</b>		<b>\$2,751.60</b>

**Total Purchased Property Services**

**Total 1442 Alternative Education Programs**

	<b>\$1,855.40</b>	<b>\$216,598.08</b>		<b>\$218,453.48</b>
--	-------------------	---------------------	--	---------------------

General Fund (10)

1500 Nonpublic School Programs

Elementary

Secondary

Federal

Total

300 Purchased Professional and Technical Services

324 Professional Educational Services – Employee Training and Development Services

112,067.83

112,067.83

**Total Purchased Professional and Technical Services**

**\$112,067.83**

**\$112,067.83**

**Total 1500 Nonpublic School Programs**

**\$112,067.83**

**\$112,067.83**

LEA : 124151902 Coatesville Area SD

Printed 2/6/2018 2:59:15 PM

**General Fund (10)**

**1800 Pre-Kindergarten**

**100 Personnel Services – Salaries**

	<u>Elementary</u>	<u>Secondary</u>	<u>Federal</u>	<u>Total</u>
100 Personnel Services – Salaries				267,857.80
<b>Total Personnel Services – Salaries</b>				<b>\$267,857.80</b>

**200 Personnel Services – Employee Benefits**

220 Social Security Contributions				19,860.19
230 PSERS Retirement Contributions				77,558.76
250 Unemployment Compensation				693.32
260 Workers' Compensation				2,421.61
270 Group Insurance – Self-Insurance				43,217.05

<b>Total Personnel Services – Employee Benefits</b>				<b>\$143,750.93</b>
<b>Total 1800 Pre-Kindergarten</b>				<b>\$411,608.73</b>

General Fund (10)

1801 Pre-K Instruction

Elementary

Secondary

Federal

Total

100 Personnel Services – Salaries

100 Personnel Services – Salaries

161,019.22

**Total Personnel Services – Salaries**

**\$161,019.22**

200 Personnel Services – Employee Benefits

220 Social Security Contributions

12,160.34

230 PSERS Retirement Contributions

46,859.59

250 Unemployment Compensation

615.32

260 Workers' Compensation

1,455.74

270 Group Insurance – Self-Insurance

33,560.30

**Total Personnel Services – Employee Benefits**

**\$94,651.29**

**Total 1801 Pre-K Instruction**

**\$255,670.51**

LEA : 124151902 Coatesville Area SD

Printed 2/6/2018 2:59:15 PM

General Fund (10)

1803 Pre-K Operations and Maintenance

Elementary

Secondary

Federal

Total

100 Personnel Services – Salaries

100 Personnel Services – Salaries

106,838.58

**Total Personnel Services – Salaries**

**\$106,838.58**

200 Personnel Services – Employee Benefits

220 Social Security Contributions

7,699.85

230 PSERS Retirement Contributions

30,699.17

250 Unemployment Compensation

78.00

260 Workers' Compensation

965.87

270 Group Insurance – Self-Insurance

9,656.75

**Total Personnel Services – Employee Benefits**

**\$49,099.64**

**Total 1803 Pre-K Operations and Maintenance**

**\$155,938.22**

**General Fund (10)**

**2000 Support Services**

**Total**

**100 Personnel Services – Salaries**

100 Personnel Services – Salaries 11,307,821.20

**Total Personnel Services – Salaries \$11,307,821.20**

**200 Personnel Services – Employee Benefits**

220 Social Security Contributions 827,571.77

230 PSERS Retirement Contributions 3,308,467.18

240 Tuition Reimbursement 243,239.36

250 Unemployment Compensation 8,743.11

260 Workers' Compensation 102,220.25

270 Group Insurance – Self-Insurance 2,415,387.35

**Total Personnel Services – Employee Benefits \$6,905,629.02**

**300 Purchased Professional and Technical Services**

322 Professional Educational Services – Ius 111,107.25

324 Professional Educational Services – Employee Training and Development Services 310,800.83

330 Other Professional Services 2,064,361.48

340 Technical Services 838,132.08

350 Security / Safety Services 197,871.99

390 Other Purchased Professional and Technical Services 29,186.33

**Total Purchased Professional and Technical Services \$3,551,459.96**

**400 Purchased Property Services**

410 Cleaning Services 1,101,554.33

420 Utility Services 301,704.08

430 Repairs and Maintenance Services 1,327,646.44

440 Rentals 485,215.58

460 Extermination Services 11,686.61

**Total Purchased Property Services \$3,227,807.04**

**500 Other Purchased Services**

510 Student Transportation Services 2,896.00

513 Contracted Carriers 9,834,508.25

516 Student Transportation Services From the IU 20,914.38

519 Student Transportation Services From Other Sources 2,890.86

521 Fire Insurance 3,449.15

522 Automotive Liability Insurance 23,699.00

523 General Property and Liability Insurance 163,041.00

529 Other Insurance 100,187.00

530 Communications 322,387.72

549 Other Advertising/Public Relations 10,563.65

550 Printing and Binding 978.89

580 Travel 5,755.09

595 IU Payments By Withholding 49,811.20

**Total Other Purchased Services \$10,541,082.19**

**600 Supplies**

610 General Supplies 526,297.35

620 Energy 1,632,404.58

LEA : 124151902 Coatesville Area SD

Printed 2/6/2018 2:59:17 PM

**General Fund (10)**

**2000 Support Services**

**Total**

**600 Supplies**

630 Food	4,105.51
640 Books and Periodicals	257,681.39
650 Supplies & Fees – Technology Related	382,097.16

<b>Total Supplies</b>	<b>\$2,802,585.99</b>
-----------------------	-----------------------

**700 Property**

752 Capital Equipment – Original and Additional	31,258.65
756 Capitalized Technology Hardware and Equipment – Original	1,496.07
758 Capitalized Technology Software - Original	48,890.61
768 Capitalized Technology Software - Replacement	(3,180.60)

<b>Total Property</b>	<b>\$78,464.73</b>
-----------------------	--------------------

**800 Other Objects**

810 Dues and Fees	401,281.71
890 Miscellaneous Expenditures	14,547.48

<b>Total Other Objects</b>	<b>\$415,829.19</b>
----------------------------	---------------------

<b>Total 2000 Support Services</b>	<b>\$38,830,679.32</b>
------------------------------------	------------------------



**General Fund (10)**

	<u>Elementary</u>	<u>Secondary</u>	<u>Federal</u>	<u>Total</u>
<b>2100 Support Services – Students</b>				
<b>100 Personnel Services – Salaries</b>				
100 Personnel Services – Salaries	1,073,683.48	1,021,786.92		2,371,938.99
<b>Total Personnel Services – Salaries</b>	<b>\$1,073,683.48</b>	<b>\$1,021,786.92</b>		<b>\$2,371,938.99</b>
<b>200 Personnel Services – Employee Benefits</b>				
220 Social Security Contributions	80,630.45	77,057.78		178,165.12
230 PSERS Retirement Contributions	322,098.80	303,916.51		706,092.18
250 Unemployment Compensation	888.70	417.76		1,607.68
260 Workers' Compensation	9,705.87	9,237.04		21,442.36
270 Group Insurance – Self-Insurance	219,004.90	225,736.95		527,029.41
<b>Total Personnel Services – Employee Benefits</b>	<b>\$632,328.72</b>	<b>\$616,366.04</b>		<b>\$1,434,336.75</b>
<b>300 Purchased Professional and Technical Services</b>				
322 Professional Educational Services – lus	74,919.62	36,187.63		111,107.25
324 Professional Educational Services – Employee Training and Development Services	485.50	234.50		1,230.00
330 Other Professional Services	84,406.88	40,770.17		159,676.61
<b>Total Purchased Professional and Technical Services</b>	<b>\$159,812.00</b>	<b>\$77,192.30</b>		<b>\$272,013.86</b>
<b>500 Other Purchased Services</b>				
510 Student Transportation Services		2,896.00		2,896.00
580 Travel	338.63	163.56		741.85
<b>Total Other Purchased Services</b>	<b>\$338.63</b>	<b>\$3,059.56</b>		<b>\$3,637.85</b>
<b>600 Supplies</b>				
610 General Supplies	25,977.82	15,825.54		42,041.70
630 Food	21.56	10.41		31.97
<b>Total Supplies</b>	<b>\$25,999.38</b>	<b>\$15,835.95</b>		<b>\$42,073.67</b>
<b>800 Other Objects</b>				
810 Dues and Fees				60.00
890 Miscellaneous Expenditures		14,547.48		14,547.48
<b>Total Other Objects</b>		<b>\$14,547.48</b>		<b>\$14,607.48</b>
<b>Total 2100 Support Services – Students</b>	<b>\$1,892,162.21</b>	<b>\$1,748,788.25</b>		<b>\$4,138,608.60</b>

**General Fund (10)**

	<u>Elementary</u>	<u>Secondary</u>	<u>Federal</u>	<u>Total</u>
<b>2110 Supervision of Student Services</b>				
<b>100 Personnel Services – Salaries</b>				
100 Personnel Services – Salaries	10,175.19	4,914.81		15,090.00
<b>Total Personnel Services – Salaries</b>	<b>\$10,175.19</b>	<b>\$4,914.81</b>		<b>\$15,090.00</b>
<b>200 Personnel Services – Employee Benefits</b>				
220 Social Security Contributions	778.41	375.99		1,154.40
230 PSERS Retirement Contributions	3,055.62	1,475.92		4,531.54
250 Unemployment Compensation	68.28	32.98		101.26
260 Workers' Compensation	91.95	44.42		136.37
270 Group Insurance – Self-Insurance	104.71	50.57		155.28
<b>Total Personnel Services – Employee Benefits</b>	<b>\$4,098.97</b>	<b>\$1,979.88</b>		<b>\$6,078.85</b>
<b>300 Purchased Professional and Technical Services</b>				
330 Other Professional Services	158.46	76.54		235.00
<b>Total Purchased Professional and Technical Services</b>	<b>\$158.46</b>	<b>\$76.54</b>		<b>\$235.00</b>
<b>Total 2110 Supervision of Student Services</b>	<b>\$14,432.62</b>	<b>\$6,971.23</b>		<b>\$21,403.85</b>

**General Fund (10)**

	<u>Elementary</u>	<u>Secondary</u>	<u>Federal</u>	<u>Total</u>
<b>2111 Supervision of Student Services – Head of Component</b>				
<b>100 Personnel Services – Salaries</b>				
100 Personnel Services – Salaries	10,175.19	4,914.81		15,090.00
<b>Total Personnel Services – Salaries</b>	<b>\$10,175.19</b>	<b>\$4,914.81</b>		<b>\$15,090.00</b>
<b>200 Personnel Services – Employee Benefits</b>				
220 Social Security Contributions	778.41	375.99		1,154.40
230 PSERS Retirement Contributions	3,055.62	1,475.92		4,531.54
250 Unemployment Compensation	68.28	32.98		101.26
260 Workers' Compensation	91.95	44.42		136.37
270 Group Insurance – Self-Insurance	104.71	50.57		155.28
<b>Total Personnel Services – Employee Benefits</b>	<b>\$4,098.97</b>	<b>\$1,979.88</b>		<b>\$6,078.85</b>
<b>300 Purchased Professional and Technical Services</b>				
330 Other Professional Services	158.46	76.54		235.00
<b>Total Purchased Professional and Technical Services</b>	<b>\$158.46</b>	<b>\$76.54</b>		<b>\$235.00</b>
<b>Total 2111 Supervision of Student Services – Head of Component</b>	<b>\$14,432.62</b>	<b>\$6,971.23</b>		<b>\$21,403.85</b>

**General Fund (10)**

**2120 Guidance Services**

	<u>Elementary</u>	<u>Secondary</u>	<u>Federal</u>	<u>Total</u>
<b>100 Personnel Services – Salaries</b>				
100 Personnel Services – Salaries	657,041.16	1,000,441.08		1,657,482.24
<b>Total Personnel Services – Salaries</b>	<b>\$657,041.16</b>	<b>\$1,000,441.08</b>		<b>\$1,657,482.24</b>
<b>200 Personnel Services – Employee Benefits</b>				
220 Social Security Contributions	49,069.64	75,441.81		124,511.45
230 PSERS Retirement Contributions	197,309.52	297,506.38		494,815.90
250 Unemployment Compensation	386.68	371.30		757.98
260 Workers' Compensation	5,939.78	9,044.13		14,983.91
270 Group Insurance – Self-Insurance	153,037.16	221,263.45		374,300.61
<b>Total Personnel Services – Employee Benefits</b>	<b>\$405,742.78</b>	<b>\$603,627.07</b>		<b>\$1,009,369.85</b>
<b>300 Purchased Professional and Technical Services</b>				
324 Professional Educational Services – Employee Training and Development Services	151.72	73.28		225.00
<b>Total Purchased Professional and Technical Services</b>	<b>\$151.72</b>	<b>\$73.28</b>		<b>\$225.00</b>
<b>500 Other Purchased Services</b>				
510 Student Transportation Services		2,896.00		2,896.00
580 Travel	80.10	38.69		118.79
<b>Total Other Purchased Services</b>	<b>\$80.10</b>	<b>\$2,934.69</b>		<b>\$3,014.79</b>
<b>600 Supplies</b>				
610 General Supplies	4,193.90	5,303.48		9,497.38
630 Food	21.56	10.41		31.97
<b>Total Supplies</b>	<b>\$4,215.46</b>	<b>\$5,313.89</b>		<b>\$9,529.35</b>
<b>800 Other Objects</b>				
890 Miscellaneous Expenditures		14,547.48		14,547.48
<b>Total Other Objects</b>		<b>\$14,547.48</b>		<b>\$14,547.48</b>
<b>Total 2120 Guidance Services</b>	<b>\$1,067,231.22</b>	<b>\$1,626,937.49</b>		<b>\$2,694,168.71</b>

**General Fund (10)**

	<u>Elementary</u>	<u>Secondary</u>	<u>Federal</u>	<u>Total</u>
<b>2130 Attendance Services</b>				
<b>100 Personnel Services – Salaries</b>				
100 Personnel Services – Salaries				276,468.59
<b>Total Personnel Services – Salaries</b>				<b>\$276,468.59</b>
<b>200 Personnel Services – Employee Benefits</b>				
220 Social Security Contributions				20,476.89
230 PSERS Retirement Contributions				80,076.87
250 Unemployment Compensation				301.22
260 Workers' Compensation				2,499.45
270 Group Insurance – Self-Insurance				82,287.56
<b>Total Personnel Services – Employee Benefits</b>				<b>\$185,641.99</b>
<b>300 Purchased Professional and Technical Services</b>				
324 Professional Educational Services – Employee Training and Development Services				510.00
330 Other Professional Services				12,644.16
<b>Total Purchased Professional and Technical Services</b>				<b>\$13,154.16</b>
<b>500 Other Purchased Services</b>				
580 Travel				147.32
<b>Total Other Purchased Services</b>				<b>\$147.32</b>
<b>Total 2130 Attendance Services</b>				<b>\$475,412.06</b>

**General Fund (10)**

**2140 Psychological Services**

	<u>Elementary</u>	<u>Secondary</u>	<u>Federal</u>	<u>Total</u>
<b>100 Personnel Services – Salaries</b>				
100 Personnel Services – Salaries	406,467.13	16,431.03		422,898.16
<b>Total Personnel Services – Salaries</b>	<b>\$406,467.13</b>	<b>\$16,431.03</b>		<b>\$422,898.16</b>
<b>200 Personnel Services – Employee Benefits</b>				
220 Social Security Contributions	30,782.40	1,239.98		32,022.38
230 PSERS Retirement Contributions	121,733.66	4,934.21		126,667.87
250 Unemployment Compensation	433.74	13.48		447.22
260 Workers' Compensation	3,674.14	148.49		3,822.63
270 Group Insurance – Self-Insurance	65,863.03	4,422.93		70,285.96
<b>Total Personnel Services – Employee Benefits</b>	<b>\$222,486.97</b>	<b>\$10,759.09</b>		<b>\$233,246.06</b>
<b>300 Purchased Professional and Technical Services</b>				
322 Professional Educational Services – lus	74,919.62	36,187.63		111,107.25
324 Professional Educational Services – Employee Training and Development Services	333.78	161.22		495.00
330 Other Professional Services	84,248.42	40,693.63		124,942.05
<b>Total Purchased Professional and Technical Services</b>	<b>\$159,501.82</b>	<b>\$77,042.48</b>		<b>\$236,544.30</b>
<b>500 Other Purchased Services</b>				
580 Travel	258.53	124.87		383.40
<b>Total Other Purchased Services</b>	<b>\$258.53</b>	<b>\$124.87</b>		<b>\$383.40</b>
<b>600 Supplies</b>				
610 General Supplies	21,783.92	10,522.06		32,305.98
<b>Total Supplies</b>	<b>\$21,783.92</b>	<b>\$10,522.06</b>		<b>\$32,305.98</b>
<b>Total 2140 Psychological Services</b>	<b>\$810,498.37</b>	<b>\$114,879.53</b>		<b>\$925,377.90</b>

General Fund (10)

2170 Student Accounting Services

Elementary

Secondary

Federal

Total

300 Purchased Professional and Technical Services

330 Other Professional Services

21,855.40

**Total Purchased Professional and Technical Services**

**\$21,855.40**

500 Other Purchased Services

580 Travel

92.34

**Total Other Purchased Services**

**\$92.34**

600 Supplies

610 General Supplies

238.34

**Total Supplies**

**\$238.34**

800 Other Objects

810 Dues and Fees

60.00

**Total Other Objects**

**\$60.00**

**Total 2170 Student Accounting Services**

**\$22,246.08**

LEA : 124151902 Coatesville Area SD

Printed 2/6/2018 2:59:17 PM

**General Fund (10)**

**2200 Support Services – Instructional Staff**

	<u>Elementary</u>	<u>Secondary</u>	<u>Federal</u>	<u>Total</u>
<b>100 Personnel Services – Salaries</b>				
100 Personnel Services – Salaries	672,672.01	300,755.26	58,029.42	1,031,456.69
<b>Total Personnel Services – Salaries</b>	<b>\$672,672.01</b>	<b>\$300,755.26</b>	<b>\$58,029.42</b>	<b>\$1,031,456.69</b>
<b>200 Personnel Services – Employee Benefits</b>				
220 Social Security Contributions	50,283.13	22,083.31	4,227.36	76,593.80
230 PSERS Retirement Contributions	194,448.00	86,023.64	17,177.92	297,649.56
240 Tuition Reimbursement	107,824.14	115,984.12		223,808.26
250 Unemployment Compensation	276.04	317.93	77.99	671.96
260 Workers' Compensation	6,080.91	2,718.83	524.51	9,324.25
270 Group Insurance – Self-Insurance	110,468.11	96,669.61	28,328.87	235,466.59
<b>Total Personnel Services – Employee Benefits</b>	<b>\$469,380.33</b>	<b>\$323,797.44</b>	<b>\$50,336.65</b>	<b>\$843,514.42</b>
<b>300 Purchased Professional and Technical Services</b>				
324 Professional Educational Services – Employee Training and Development Services	11,490.07	5,549.93	284,715.92	301,755.92
<b>Total Purchased Professional and Technical Services</b>	<b>\$11,490.07</b>	<b>\$5,549.93</b>	<b>\$284,715.92</b>	<b>\$301,755.92</b>
<b>500 Other Purchased Services</b>				
580 Travel	1,740.50	1,233.20		2,973.70
<b>Total Other Purchased Services</b>	<b>\$1,740.50</b>	<b>\$1,233.20</b>		<b>\$2,973.70</b>
<b>600 Supplies</b>				
610 General Supplies	11,387.76	570.12	27,994.95	39,952.83
640 Books and Periodicals	171,264.32	83,247.28		254,511.60
650 Supplies & Fees – Technology Related	2,750.90	418.59		3,169.49
<b>Total Supplies</b>	<b>\$185,402.98</b>	<b>\$84,235.99</b>	<b>\$27,994.95</b>	<b>\$297,633.92</b>
<b>800 Other Objects</b>				
810 Dues and Fees	39.78	5,364.22		5,404.00
<b>Total Other Objects</b>	<b>\$39.78</b>	<b>\$5,364.22</b>		<b>\$5,404.00</b>
<b>Total 2200 Support Services – Instructional Staff</b>	<b>\$1,340,725.67</b>	<b>\$720,936.04</b>	<b>\$421,076.94</b>	<b>\$2,482,738.65</b>



**General Fund (10)**

	<u>Elementary</u>	<u>Secondary</u>	<u>Federal</u>	<u>Total</u>
<b>2240 Computer-Assisted Instruction Support Services</b>				
<b>100 Personnel Services – Salaries</b>				
100 Personnel Services – Salaries	236,982.27	114,467.04		351,449.31
<b>Total Personnel Services – Salaries</b>	<b>\$236,982.27</b>	<b>\$114,467.04</b>		<b>\$351,449.31</b>
<b>200 Personnel Services – Employee Benefits</b>				
220 Social Security Contributions	17,581.73	8,492.32		26,074.05
230 PSERS Retirement Contributions	67,715.65	32,707.98		100,423.63
250 Unemployment Compensation	168.48	81.38		249.86
260 Workers' Compensation	2,142.45	1,034.85		3,177.30
270 Group Insurance – Self-Insurance	62,217.82	30,052.42		92,270.24
<b>Total Personnel Services – Employee Benefits</b>	<b>\$149,826.13</b>	<b>\$72,368.95</b>		<b>\$222,195.08</b>
<b>Total 2240 Computer-Assisted Instruction Support Services</b>	<b>\$386,808.40</b>	<b>\$186,835.99</b>		<b>\$573,644.39</b>

**General Fund (10)**

	<u>Elementary</u>	<u>Secondary</u>	<u>Federal</u>	<u>Total</u>
<b>2250 School Library Services</b>				
<b>100 Personnel Services – Salaries</b>				
100 Personnel Services – Salaries	254,082.49	98,568.40		352,650.89
<b>Total Personnel Services – Salaries</b>	<b>\$254,082.49</b>	<b>\$98,568.40</b>		<b>\$352,650.89</b>
<b>200 Personnel Services – Employee Benefits</b>				
220 Social Security Contributions	19,207.11	7,072.99		26,280.10
230 PSERS Retirement Contributions	75,692.75	28,662.54		104,355.29
250 Unemployment Compensation	107.56	236.55		344.11
260 Workers' Compensation	2,296.84	891.05		3,187.89
270 Group Insurance – Self-Insurance	48,001.99	66,497.24		114,499.23
<b>Total Personnel Services – Employee Benefits</b>	<b>\$145,306.25</b>	<b>\$103,360.37</b>		<b>\$248,666.62</b>
<b>600 Supplies</b>				
610 General Supplies	5,225.94	530.94		5,756.88
640 Books and Periodicals	4,841.34	2,861.75		7,703.09
650 Supplies & Fees – Technology Related	2,750.90	418.59		3,169.49
<b>Total Supplies</b>	<b>\$12,818.18</b>	<b>\$3,811.28</b>		<b>\$16,629.46</b>
<b>800 Other Objects</b>				
810 Dues and Fees		5,345.00		5,345.00
<b>Total Other Objects</b>		<b>\$5,345.00</b>		<b>\$5,345.00</b>
<b>Total 2250 School Library Services</b>	<b>\$412,206.92</b>	<b>\$211,085.05</b>		<b>\$623,291.97</b>

**General Fund (10)**

**2260 Instruction and Curriculum Development Services**

	<u>Elementary</u>	<u>Secondary</u>	<u>Federal</u>	<u>Total</u>
<b>100 Personnel Services – Salaries</b>				
100 Personnel Services – Salaries	181,607.25	87,719.82	54,538.63	323,865.70
<b>Total Personnel Services – Salaries</b>	<b>\$181,607.25</b>	<b>\$87,719.82</b>	<b>\$54,538.63</b>	<b>\$323,865.70</b>
<b>200 Personnel Services – Employee Benefits</b>				
220 Social Security Contributions	13,494.29	6,518.00	3,962.35	23,974.64
230 PSERS Retirement Contributions	51,039.60	24,653.12	16,135.86	91,828.58
250 Unemployment Compensation			77.99	77.99
260 Workers' Compensation	1,641.62	792.93	492.97	2,927.52
270 Group Insurance – Self-Insurance	248.30	119.95	28,328.87	28,697.12
<b>Total Personnel Services – Employee Benefits</b>	<b>\$66,423.81</b>	<b>\$32,084.00</b>	<b>\$48,998.04</b>	<b>\$147,505.85</b>
<b>300 Purchased Professional and Technical Services</b>				
324 Professional Educational Services – Employee Training and Development Services	11,490.07	5,549.93		17,040.00
<b>Total Purchased Professional and Technical Services</b>	<b>\$11,490.07</b>	<b>\$5,549.93</b>		<b>\$17,040.00</b>
<b>500 Other Purchased Services</b>				
580 Travel	1,740.50	1,233.20		2,973.70
<b>Total Other Purchased Services</b>	<b>\$1,740.50</b>	<b>\$1,233.20</b>		<b>\$2,973.70</b>
<b>600 Supplies</b>				
610 General Supplies	6,161.82	39.18		6,201.00
640 Books and Periodicals	166,422.98	80,385.53		246,808.51
<b>Total Supplies</b>	<b>\$172,584.80</b>	<b>\$80,424.71</b>		<b>\$253,009.51</b>
<b>800 Other Objects</b>				
810 Dues and Fees	39.78	19.22		59.00
<b>Total Other Objects</b>	<b>\$39.78</b>	<b>\$19.22</b>		<b>\$59.00</b>
<b>Total 2260 Instruction and Curriculum Development Services</b>	<b>\$433,886.21</b>	<b>\$207,030.88</b>	<b>\$103,536.67</b>	<b>\$744,453.76</b>

**General Fund (10)**

	<u>Elementary</u>	<u>Secondary</u>	<u>Federal</u>	<u>Total</u>
<b>2270 Instructional Staff Professional Development Services</b>				
<b>100 Personnel Services – Salaries</b>				
100 Personnel Services – Salaries			3,490.79	3,490.79
<b>Total Personnel Services – Salaries</b>			<b>\$3,490.79</b>	<b>\$3,490.79</b>
<b>200 Personnel Services – Employee Benefits</b>				
220 Social Security Contributions			265.01	265.01
230 PSERS Retirement Contributions			1,042.06	1,042.06
240 Tuition Reimbursement	107,824.14	115,984.12		223,808.26
260 Workers' Compensation			31.54	31.54
<b>Total Personnel Services – Employee Benefits</b>	<b>\$107,824.14</b>	<b>\$115,984.12</b>	<b>\$1,338.61</b>	<b>\$225,146.87</b>
<b>300 Purchased Professional and Technical Services</b>				
324 Professional Educational Services – Employee Training and Development Services			284,715.92	284,715.92
<b>Total Purchased Professional and Technical Services</b>			<b>\$284,715.92</b>	<b>\$284,715.92</b>
<b>600 Supplies</b>				
610 General Supplies			27,994.95	27,994.95
<b>Total Supplies</b>			<b>\$27,994.95</b>	<b>\$27,994.95</b>
<b>Total 2270 Instructional Staff Professional Development Services</b>	<b>\$107,824.14</b>	<b>\$115,984.12</b>	<b>\$317,540.27</b>	<b>\$541,348.53</b>

**General Fund (10)**

**2300 Support Services – Administration**

	<u>Elementary</u>	<u>Secondary</u>	<u>Federal</u>	<u>Total</u>
<b>100 Personnel Services – Salaries</b>				
100 Personnel Services – Salaries	1,506,511.82	1,784,740.02		4,129,725.51
<b>Total Personnel Services – Salaries</b>	<b>\$1,506,511.82</b>	<b>\$1,784,740.02</b>		<b>\$4,129,725.51</b>
<b>200 Personnel Services – Employee Benefits</b>				
220 Social Security Contributions	111,312.60	132,645.76		297,619.26
230 PSERS Retirement Contributions	433,630.62	515,132.04		1,187,846.87
250 Unemployment Compensation	878.78	777.98		2,019.69
260 Workers' Compensation	13,618.80	16,134.67		37,333.25
270 Group Insurance – Self-Insurance	214,908.40	366,074.04		699,331.22
<b>Total Personnel Services – Employee Benefits</b>	<b>\$774,349.20</b>	<b>\$1,030,764.49</b>		<b>\$2,224,150.29</b>
<b>300 Purchased Professional and Technical Services</b>				
324 Professional Educational Services – Employee Training and Development Services	623.38	378.59		2,671.57
330 Other Professional Services	160,463.97	22,357.85		902,945.09
<b>Total Purchased Professional and Technical Services</b>	<b>\$161,087.35</b>	<b>\$22,736.44</b>		<b>\$905,616.66</b>
<b>400 Purchased Property Services</b>				
440 Rentals				8,391.16
<b>Total Purchased Property Services</b>				<b>\$8,391.16</b>
<b>500 Other Purchased Services</b>				
530 Communications				11,763.68
549 Other Advertising/Public Relations				2,295.73
550 Printing and Binding				978.89
580 Travel				1,798.57
<b>Total Other Purchased Services</b>				<b>\$16,836.87</b>
<b>600 Supplies</b>				
610 General Supplies	2,473.80	13,343.97		58,252.59
630 Food	162.82	4,212.08		4,073.54
640 Books and Periodicals	98.41	203.74		2,208.79
650 Supplies & Fees – Technology Related	114.00	236.00		350.00
<b>Total Supplies</b>	<b>\$2,849.03</b>	<b>\$17,995.79</b>		<b>\$64,884.92</b>
<b>700 Property</b>				
752 Capital Equipment – Original and Additional	24,118.94	7,139.71		31,258.65
<b>Total Property</b>	<b>\$24,118.94</b>	<b>\$7,139.71</b>		<b>\$31,258.65</b>
<b>800 Other Objects</b>				
810 Dues and Fees	3,682.84	10,701.72		386,345.21
<b>Total Other Objects</b>	<b>\$3,682.84</b>	<b>\$10,701.72</b>		<b>\$386,345.21</b>
<b>Total 2300 Support Services – Administration</b>	<b>\$2,472,599.18</b>	<b>\$2,874,078.17</b>		<b>\$7,767,209.27</b>

General Fund (10)

2310 Board Services

Elementary

Secondary

Federal

Total

100 Personnel Services – Salaries

100 Personnel Services – Salaries 64,747.00

**Total Personnel Services – Salaries \$64,747.00**

200 Personnel Services – Employee Benefits

220 Social Security Contributions 4,894.15

230 PSERS Retirement Contributions 18,955.88

250 Unemployment Compensation 78.02

260 Workers' Compensation 585.17

270 Group Insurance – Self-Insurance 18,802.62

**Total Personnel Services – Employee Benefits \$43,315.84**

300 Purchased Professional and Technical Services

324 Professional Educational Services – Employee Training and Development Services 990.60

**Total Purchased Professional and Technical Services \$990.60**

500 Other Purchased Services

530 Communications 4,916.72

549 Other Advertising/Public Relations 2,295.73

550 Printing and Binding 364.89

580 Travel 274.61

**Total Other Purchased Services \$7,851.95**

600 Supplies

610 General Supplies 13,910.46

630 Food 2,238.64

**Total Supplies \$16,149.10**

800 Other Objects

810 Dues and Fees 26,198.32

**Total Other Objects \$26,198.32**

**Total 2310 Board Services \$159,252.81**

General Fund (10)

	<u>Elementary</u>	<u>Secondary</u>	<u>Federal</u>	<u>Total</u>
<b>2330 Tax Assessment and Collection Services</b>				
<b>300 <u>Purchased Professional and Technical Services</u></b>				
330 Other Professional Services				53,743.47
<b>Total Purchased Professional and Technical Services</b>				<b>\$53,743.47</b>
<b>500 <u>Other Purchased Services</u></b>				
530 Communications				6,735.24
<b>Total Other Purchased Services</b>				<b>\$6,735.24</b>
<b>800 <u>Other Objects</u></b>				
810 Dues and Fees				339,238.74
<b>Total Other Objects</b>				<b>\$339,238.74</b>
<b>Total 2330 Tax Assessment and Collection Services</b>				<b>\$399,717.45</b>

**General Fund (10)**

**2350 Legal and Accounting Services**

<u>Elementary</u>	<u>Secondary</u>	<u>Federal</u>	<u>Total</u>
-------------------	------------------	----------------	--------------

**100 Personnel Services – Salaries**

100 Personnel Services – Salaries			223,219.27
-----------------------------------	--	--	------------

<b>Total Personnel Services – Salaries</b>			<b>\$223,219.27</b>
--	--	--	---------------------

**200 Personnel Services – Employee Benefits**

220 Social Security Contributions			13,188.29
-----------------------------------	--	--	-----------

230 PSERS Retirement Contributions			64,948.52
------------------------------------	--	--	-----------

260 Workers’ Compensation			2,017.97
---------------------------	--	--	----------

270 Group Insurance – Self-Insurance			30,704.01
--------------------------------------	--	--	-----------

<b>Total Personnel Services – Employee Benefits</b>			<b>\$110,858.79</b>
---	--	--	---------------------

**300 Purchased Professional and Technical Services**

324 Professional Educational Services – Employee Training and Development Services			679.00
--	--	--	--------

330 Other Professional Services			656,123.62
---------------------------------	--	--	------------

<b>Total Purchased Professional and Technical Services</b>			<b>\$656,802.62</b>
--	--	--	---------------------

**500 Other Purchased Services**

530 Communications			111.72
--------------------	--	--	--------

580 Travel			1,523.96
------------	--	--	----------

<b>Total Other Purchased Services</b>			<b>\$1,635.68</b>
---------------------------------------	--	--	-------------------

**600 Supplies**

610 General Supplies			997.80
----------------------	--	--	--------

<b>Total Supplies</b>			<b>\$997.80</b>
-----------------------	--	--	-----------------

**800 Other Objects**

810 Dues and Fees			1,502.75
-------------------	--	--	----------

<b>Total Other Objects</b>			<b>\$1,502.75</b>
----------------------------	--	--	-------------------

<b>Total 2350 Legal and Accounting Services</b>			<b>\$995,016.91</b>
---	--	--	---------------------



General Fund (10)

2360 Office of the Superintendent / Executive Director Services

Elementary

Secondary

Federal

Total

100 Personnel Services – Salaries

100 Personnel Services – Salaries

525,042.69

**Total Personnel Services – Salaries**

**\$525,042.69**

200 Personnel Services – Employee Benefits

220 Social Security Contributions

33,757.39

230 PSERS Retirement Contributions

147,562.09

250 Unemployment Compensation

269.31

260 Workers' Compensation

4,746.46

270 Group Insurance – Self-Insurance

63,289.16

**Total Personnel Services – Employee Benefits**

**\$249,624.41**

300 Purchased Professional and Technical Services

330 Other Professional Services

5,250.73

**Total Purchased Professional and Technical Services**

**\$5,250.73**

400 Purchased Property Services

440 Rentals

2,284.80

**Total Purchased Property Services**

**\$2,284.80**

600 Supplies

610 General Supplies

19,517.51

630 Food

(2,540.00)

640 Books and Periodicals

1,906.64

**Total Supplies**

**\$18,884.15**

800 Other Objects

810 Dues and Fees

3,166.00

**Total Other Objects**

**\$3,166.00**

**Total 2360 Office of the Superintendent / Executive Director Services**

**\$804,252.78**

**General Fund (10)**

**2380 Office of the Principal Services**

**100 Personnel Services – Salaries**

	<u>Elementary</u>	<u>Secondary</u>	<u>Federal</u>	<u>Total</u>
100 Personnel Services – Salaries	1,506,511.82	1,784,740.02		3,291,251.84
<b>Total Personnel Services – Salaries</b>	<b>\$1,506,511.82</b>	<b>\$1,784,740.02</b>		<b>\$3,291,251.84</b>

**200 Personnel Services – Employee Benefits**

220 Social Security Contributions	111,312.60	132,645.76		243,958.36
230 PSERS Retirement Contributions	433,630.62	515,132.04		948,762.66
250 Unemployment Compensation	878.78	777.98		1,656.76
260 Workers' Compensation	13,618.80	16,134.67		29,753.47
270 Group Insurance – Self-Insurance	214,908.40	366,074.04		580,982.44
<b>Total Personnel Services – Employee Benefits</b>	<b>\$774,349.20</b>	<b>\$1,030,764.49</b>		<b>\$1,805,113.69</b>

**300 Purchased Professional and Technical Services**

324 Professional Educational Services – Employee Training and Development Services	623.38	378.59		1,001.97
330 Other Professional Services	160,463.97	22,357.85		182,821.82
<b>Total Purchased Professional and Technical Services</b>	<b>\$161,087.35</b>	<b>\$22,736.44</b>		<b>\$183,823.79</b>

**600 Supplies**

610 General Supplies	2,473.80	13,343.97		15,817.77
630 Food	162.82	4,212.08		4,374.90
640 Books and Periodicals	98.41	203.74		302.15
650 Supplies & Fees – Technology Related	114.00	236.00		350.00
<b>Total Supplies</b>	<b>\$2,849.03</b>	<b>\$17,995.79</b>		<b>\$20,844.82</b>

**700 Property**

752 Capital Equipment – Original and Additional	24,118.94	7,139.71		31,258.65
<b>Total Property</b>	<b>\$24,118.94</b>	<b>\$7,139.71</b>		<b>\$31,258.65</b>

**800 Other Objects**

810 Dues and Fees	3,682.84	10,701.72		14,384.56
<b>Total Other Objects</b>	<b>\$3,682.84</b>	<b>\$10,701.72</b>		<b>\$14,384.56</b>

**Total 2380 Office of the Principal Services**

	<b>\$2,472,599.18</b>	<b>\$2,874,078.17</b>		<b>\$5,346,677.35</b>
--	-----------------------	-----------------------	--	-----------------------

**General Fund (10)**

**2390 Other Administration Services**

Elementary                      Secondary                      Federal                      Total

**100 Personnel Services – Salaries**

100 Personnel Services – Salaries 25,464.71

**Total Personnel Services – Salaries \$25,464.71**

**200 Personnel Services – Employee Benefits**

220 Social Security Contributions 1,821.07

230 PSERS Retirement Contributions 7,617.72

250 Unemployment Compensation 15.60

260 Workers' Compensation 230.18

270 Group Insurance – Self-Insurance 5,552.99

**Total Personnel Services – Employee Benefits \$15,237.56**

**300 Purchased Professional and Technical Services**

330 Other Professional Services 5,005.45

**Total Purchased Professional and Technical Services \$5,005.45**

**400 Purchased Property Services**

440 Rentals 6,106.36

**Total Purchased Property Services \$6,106.36**

**500 Other Purchased Services**

550 Printing and Binding 614.00

**Total Other Purchased Services \$614.00**

**600 Supplies**

610 General Supplies 8,009.05

**Total Supplies \$8,009.05**

**800 Other Objects**

810 Dues and Fees 1,854.84

**Total Other Objects \$1,854.84**

**Total 2390 Other Administration Services \$62,291.97**

General Fund (10)

	<u>Elementary</u>	<u>Secondary</u>	<u>Federal</u>	<u>Total</u>
<b>2400 Support Services – Pupil Health</b>				
<b>100 Personnel Services – Salaries</b>				
100 Personnel Services – Salaries				601,262.39
<b>Total Personnel Services – Salaries</b>				<b>\$601,262.39</b>
<b>200 Personnel Services – Employee Benefits</b>				
220 Social Security Contributions				44,713.71
230 PSERS Retirement Contributions				180,408.95
250 Unemployment Compensation				422.39
260 Workers' Compensation				5,435.49
270 Group Insurance – Self-Insurance				161,901.21
<b>Total Personnel Services – Employee Benefits</b>				<b>\$392,881.75</b>
<b>300 Purchased Professional and Technical Services</b>				
330 Other Professional Services				102,646.88
<b>Total Purchased Professional and Technical Services</b>				<b>\$102,646.88</b>
<b>400 Purchased Property Services</b>				
430 Repairs and Maintenance Services				3,205.25
<b>Total Purchased Property Services</b>				<b>\$3,205.25</b>
<b>600 Supplies</b>				
610 General Supplies				22,564.15
<b>Total Supplies</b>				<b>\$22,564.15</b>
<b>Total 2400 Support Services – Pupil Health</b>				<b>\$1,122,560.42</b>



**General Fund (10)**

**2500 Support Services – Business**

Elementary                      Secondary                      Federal                      Total

**100 Personnel Services – Salaries**

100 Personnel Services – Salaries 683,509.89

**Total Personnel Services – Salaries \$683,509.89**

**200 Personnel Services – Employee Benefits**

220 Social Security Contributions 47,254.17

230 PSERS Retirement Contributions 202,968.24

250 Unemployment Compensation 384.28

260 Workers' Compensation 6,179.08

270 Group Insurance – Self-Insurance 124,937.99

**Total Personnel Services – Employee Benefits \$381,723.76**

**300 Purchased Professional and Technical Services**

324 Professional Educational Services – Employee Training and Development Services 2,250.84

330 Other Professional Services 37,544.99

**Total Purchased Professional and Technical Services \$39,795.83**

**400 Purchased Property Services**

440 Rentals 17,046.27

**Total Purchased Property Services \$17,046.27**

**500 Other Purchased Services**

530 Communications 46,579.70

549 Other Advertising/Public Relations 267.92

580 Travel 96.76

**Total Other Purchased Services \$46,944.38**

**600 Supplies**

610 General Supplies 13,601.16

**Total Supplies \$13,601.16**

**800 Other Objects**

810 Dues and Fees 5,325.00

**Total Other Objects \$5,325.00**

**Total 2500 Support Services – Business \$1,187,946.29**

**General Fund (10)**

**2510 Fiscal Services**

	<u>Elementary</u>	<u>Secondary</u>	<u>Federal</u>	<u>Total</u>
<b>100 Personnel Services – Salaries</b>				
100 Personnel Services – Salaries				683,509.89
<b>Total Personnel Services – Salaries</b>				<b>\$683,509.89</b>
<b>200 Personnel Services – Employee Benefits</b>				
220 Social Security Contributions				47,254.17
230 PSERS Retirement Contributions				202,968.24
250 Unemployment Compensation				384.28
260 Workers' Compensation				6,179.08
270 Group Insurance – Self-Insurance				124,937.99
<b>Total Personnel Services – Employee Benefits</b>				<b>\$381,723.76</b>
<b>300 Purchased Professional and Technical Services</b>				
324 Professional Educational Services – Employee Training and Development Services				2,250.84
330 Other Professional Services				37,544.99
<b>Total Purchased Professional and Technical Services</b>				<b>\$39,795.83</b>
<b>400 Purchased Property Services</b>				
440 Rentals				17,046.27
<b>Total Purchased Property Services</b>				<b>\$17,046.27</b>
<b>500 Other Purchased Services</b>				
530 Communications				46,579.70
549 Other Advertising/Public Relations				267.92
580 Travel				96.76
<b>Total Other Purchased Services</b>				<b>\$46,944.38</b>
<b>600 Supplies</b>				
610 General Supplies				13,601.16
<b>Total Supplies</b>				<b>\$13,601.16</b>
<b>800 Other Objects</b>				
810 Dues and Fees				5,325.00
<b>Total Other Objects</b>				<b>\$5,325.00</b>
<b>Total 2510 Fiscal Services</b>				<b>\$1,187,946.29</b>

**General Fund (10)**

**2511 Supervision of Fiscal Services - Head of Component**

Elementary                      Secondary                      Federal                      Total

<b>100 Personnel Services – Salaries</b>				
100 Personnel Services – Salaries				229,375.00
<b>Total Personnel Services – Salaries</b>				<b>\$229,375.00</b>
<b>200 Personnel Services – Employee Benefits</b>				
220 Social Security Contributions				13,178.40
230 PSERS Retirement Contributions				68,881.28
250 Unemployment Compensation				56.14
260 Workers' Compensation				2,073.55
270 Group Insurance – Self-Insurance				14,338.76
<b>Total Personnel Services – Employee Benefits</b>				<b>\$98,528.13</b>
<b>600 Supplies</b>				
610 General Supplies				3,686.54
<b>Total Supplies</b>				<b>\$3,686.54</b>
<b>800 Other Objects</b>				
810 Dues and Fees				1,246.00
<b>Total Other Objects</b>				<b>\$1,246.00</b>
<b>Total 2511 Supervision of Fiscal Services - Head of Component</b>				<b>\$332,835.67</b>



General Fund (10)

	<u>Elementary</u>	<u>Secondary</u>	<u>Federal</u>	<u>Total</u>
<b>2513 Receiving and Disbursing Funds Services</b>				
<b>100 Personnel Services – Salaries</b>				
100 Personnel Services – Salaries				350,932.49
<b>Total Personnel Services – Salaries</b>				<b>\$350,932.49</b>
<b>200 Personnel Services – Employee Benefits</b>				
220 Social Security Contributions				26,504.82
230 PSERS Retirement Contributions				103,529.35
250 Unemployment Compensation				275.69
260 Workers' Compensation				3,172.53
270 Group Insurance – Self-Insurance				76,446.52
<b>Total Personnel Services – Employee Benefits</b>				<b>\$209,928.91</b>
<b>300 Purchased Professional and Technical Services</b>				
324 Professional Educational Services – Employee Training and Development Services				2,250.84
330 Other Professional Services				37,544.99
<b>Total Purchased Professional and Technical Services</b>				<b>\$39,795.83</b>
<b>400 Purchased Property Services</b>				
440 Rentals				17,046.27
<b>Total Purchased Property Services</b>				<b>\$17,046.27</b>
<b>500 Other Purchased Services</b>				
530 Communications				46,579.70
549 Other Advertising/Public Relations				267.92
580 Travel				96.76
<b>Total Other Purchased Services</b>				<b>\$46,944.38</b>
<b>600 Supplies</b>				
610 General Supplies				9,804.31
<b>Total Supplies</b>				<b>\$9,804.31</b>
<b>800 Other Objects</b>				
810 Dues and Fees				4,079.00
<b>Total Other Objects</b>				<b>\$4,079.00</b>
<b>Total 2513 Receiving and Disbursing Funds Services</b>				<b>\$678,531.19</b>

General Fund (10)

2514 Payroll Services

Elementary

Secondary

Federal

Total

100 Personnel Services – Salaries

100 Personnel Services – Salaries

103,202.40

**Total Personnel Services – Salaries**

**\$103,202.40**

200 Personnel Services – Employee Benefits

220 Social Security Contributions

7,570.95

230 PSERS Retirement Contributions

30,557.61

250 Unemployment Compensation

52.45

260 Workers' Compensation

933.00

270 Group Insurance – Self-Insurance

34,152.71

**Total Personnel Services – Employee Benefits**

**\$73,266.72**

600 Supplies

610 General Supplies

110.31

**Total Supplies**

**\$110.31**

**Total 2514 Payroll Services**

**\$176,579.43**



**General Fund (10)**

**2610 Supervision of Operation and Maintenance of Plant Services**

Elementary                      Secondary                      Federal                      Total

<b>100 Personnel Services – Salaries</b>				
100 Personnel Services – Salaries				52,401.60
<b>Total Personnel Services – Salaries</b>				<b>\$52,401.60</b>
<b>200 Personnel Services – Employee Benefits</b>				
220 Social Security Contributions				3,967.20
230 PSERS Retirement Contributions				13,734.22
250 Unemployment Compensation				343.30
260 Workers' Compensation				473.74
270 Group Insurance – Self-Insurance				7,257.84
<b>Total Personnel Services – Employee Benefits</b>				<b>\$25,776.30</b>
<b>300 Purchased Professional and Technical Services</b>				
330 Other Professional Services				511,044.38
<b>Total Purchased Professional and Technical Services</b>				<b>\$511,044.38</b>
<b>400 Purchased Property Services</b>				
410 Cleaning Services				11,633.35
440 Rentals				2,158.52
<b>Total Purchased Property Services</b>				<b>\$13,791.87</b>
<b>Total 2610 Supervision of Operation and Maintenance of Plant Services</b>				<b>\$603,014.15</b>

General Fund (10)

	<u>Elementary</u>	<u>Secondary</u>	<u>Federal</u>	<u>Total</u>
<b>2611 Supervision of Operation and Maintenance of Plant Services – Head of Component</b>				
<b>100 Personnel Services – Salaries</b>				
100 Personnel Services – Salaries				52,401.60
<b>Total Personnel Services – Salaries</b>				<b>\$52,401.60</b>
<b>200 Personnel Services – Employee Benefits</b>				
220 Social Security Contributions				3,967.20
230 PSERS Retirement Contributions				13,734.22
250 Unemployment Compensation				343.30
260 Workers' Compensation				473.74
270 Group Insurance – Self-Insurance				7,257.84
<b>Total Personnel Services – Employee Benefits</b>				<b>\$25,776.30</b>
<b>300 Purchased Professional and Technical Services</b>				
330 Other Professional Services				511,044.38
<b>Total Purchased Professional and Technical Services</b>				<b>\$511,044.38</b>
<b>400 Purchased Property Services</b>				
410 Cleaning Services				11,633.35
440 Rentals				2,158.52
<b>Total Purchased Property Services</b>				<b>\$13,791.87</b>
<b>Total 2611 Supervision of Operation and Maintenance of Plant Services – Head of Component</b>				<b>\$603,014.15</b>

**General Fund (10)**

**2620 Operation of Buildings Services**

**100 Personnel Services – Salaries**

100 Personnel Services – Salaries				1,855,690.12
-----------------------------------	--	--	--	--------------

<b>Total Personnel Services – Salaries</b>				<b>\$1,855,690.12</b>
--	--	--	--	-----------------------

**200 Personnel Services – Employee Benefits**

220 Social Security Contributions				136,051.23
-----------------------------------	--	--	--	------------

230 PSERS Retirement Contributions				547,846.35
------------------------------------	--	--	--	------------

250 Unemployment Compensation				2,606.73
-------------------------------	--	--	--	----------

260 Workers' Compensation				16,772.38
---------------------------	--	--	--	-----------

270 Group Insurance – Self-Insurance				497,000.74
--------------------------------------	--	--	--	------------

<b>Total Personnel Services – Employee Benefits</b>				<b>\$1,200,277.43</b>
---	--	--	--	-----------------------

**300 Purchased Professional and Technical Services**

330 Other Professional Services				2,594.00
---------------------------------	--	--	--	----------

390 Other Purchased Professional and Technical Services				12,418.03
---	--	--	--	-----------

<b>Total Purchased Professional and Technical Services</b>				<b>\$15,012.03</b>
--	--	--	--	--------------------

**400 Purchased Property Services**

410 Cleaning Services				1,021,532.98
-----------------------	--	--	--	--------------

420 Utility Services				301,704.08
----------------------	--	--	--	------------

430 Repairs and Maintenance Services				1,301,175.08
--------------------------------------	--	--	--	--------------

440 Rentals				25,107.03
-------------	--	--	--	-----------

460 Extermination Services				11,686.61
----------------------------	--	--	--	-----------

<b>Total Purchased Property Services</b>				<b>\$2,661,205.78</b>
--	--	--	--	-----------------------

**500 Other Purchased Services**

521 Fire Insurance				3,449.15
--------------------	--	--	--	----------

522 Automotive Liability Insurance				18,075.00
------------------------------------	--	--	--	-----------

523 General Property and Liability Insurance				163,041.00
--	--	--	--	------------

529 Other Insurance				100,187.00
---------------------	--	--	--	------------

<b>Total Other Purchased Services</b>				<b>\$284,752.15</b>
---------------------------------------	--	--	--	---------------------

**600 Supplies**

610 General Supplies	215,879.18	104,273.83		320,153.01
----------------------	------------	------------	--	------------

620 Energy				1,632,404.58
------------	--	--	--	--------------

<b>Total Supplies</b>	<b>\$215,879.18</b>	<b>\$104,273.83</b>		<b>\$1,952,557.59</b>
-----------------------	---------------------	---------------------	--	-----------------------

**800 Other Objects**

810 Dues and Fees				685.00
-------------------	--	--	--	--------

<b>Total Other Objects</b>				<b>\$685.00</b>
----------------------------	--	--	--	-----------------

<b>Total 2620 Operation of Buildings Services</b>	<b>\$215,879.18</b>	<b>\$104,273.83</b>		<b>\$7,970,180.10</b>
---	---------------------	---------------------	--	-----------------------

General Fund (10)

	<u>Elementary</u>	<u>Secondary</u>	<u>Federal</u>	<u>Total</u>
<b>2630 Care and Upkeep of Grounds Services</b>				
<b>100 Personnel Services – Salaries</b>				
100 Personnel Services – Salaries				175,080.06
<b>Total Personnel Services – Salaries</b>				<b>\$175,080.06</b>
<b>200 Personnel Services – Employee Benefits</b>				
220 Social Security Contributions				12,643.08
230 PSERS Retirement Contributions				51,708.83
250 Unemployment Compensation				236.63
260 Workers' Compensation				1,582.40
270 Group Insurance – Self-Insurance				84,902.06
<b>Total Personnel Services – Employee Benefits</b>				<b>\$151,073.00</b>
<b>300 Purchased Professional and Technical Services</b>				
330 Other Professional Services				1,350.00
<b>Total Purchased Professional and Technical Services</b>				<b>\$1,350.00</b>
<b>400 Purchased Property Services</b>				
410 Cleaning Services				68,388.00
<b>Total Purchased Property Services</b>				<b>\$68,388.00</b>
<b>Total 2630 Care and Upkeep of Grounds Services</b>				<b>\$395,891.06</b>

General Fund (10)

	<u>Elementary</u>	<u>Secondary</u>	<u>Federal</u>	<u>Total</u>
<b>2650 Vehicle Operation and Maintenance Services (Other Than Student Transportation Vehicles)</b>				
<b>400 <u>Purchased Property Services</u></b>				
430 Repairs and Maintenance Services				3,966.39
<b>Total Purchased Property Services</b>				<b>\$3,966.39</b>
<b>500 <u>Other Purchased Services</u></b>				
522 Automotive Liability Insurance				5,624.00
<b>Total Other Purchased Services</b>				<b>\$5,624.00</b>
<b>Total 2650 Vehicle Operation and Maintenance Services (Other Than Student Transportation Vehicles)</b>				<b>\$9,590.39</b>



**General Fund (10)**

**2660 Safety and Security Services**

**100 Personnel Services – Salaries**

	<u>Elementary</u>	<u>Secondary</u>	<u>Federal</u>	<u>Total</u>
100 Personnel Services – Salaries				59,541.13
<b>Total Personnel Services – Salaries</b>				<b>\$59,541.13</b>
<b>200 Personnel Services – Employee Benefits</b>				
220 Social Security Contributions				4,439.98
230 PSERS Retirement Contributions				17,627.82
250 Unemployment Compensation				137.00
260 Workers' Compensation				538.24
270 Group Insurance – Self-Insurance				19,489.37
<b>Total Personnel Services – Employee Benefits</b>				<b>\$42,232.41</b>
<b>300 Purchased Professional and Technical Services</b>				
350 Security / Safety Services				197,871.99
<b>Total Purchased Professional and Technical Services</b>				<b>\$197,871.99</b>
<b>400 Purchased Property Services</b>				
430 Repairs and Maintenance Services				4,433.66
<b>Total Purchased Property Services</b>				<b>\$4,433.66</b>
<b>600 Supplies</b>				
610 General Supplies	2,348.64	1,134.44		3,483.08
<b>Total Supplies</b>	<b>\$2,348.64</b>	<b>\$1,134.44</b>		<b>\$3,483.08</b>
<b>Total 2660 Safety and Security Services</b>	<b>\$2,348.64</b>	<b>\$1,134.44</b>		<b>\$307,562.27</b>

**General Fund (10)**

**2700 Student Transportation Services**

Elementary                      Secondary                      Federal                      Total

**100 Personnel Services – Salaries**

100 Personnel Services – Salaries 119,515.19

**Total Personnel Services – Salaries \$119,515.19**

**200 Personnel Services – Employee Benefits**

220 Social Security Contributions 8,904.18

230 PSERS Retirement Contributions 35,437.22

250 Unemployment Compensation 106.05

260 Workers' Compensation 1,080.50

270 Group Insurance – Self-Insurance 15,108.22

**Total Personnel Services – Employee Benefits \$60,636.17**

**300 Purchased Professional and Technical Services**

390 Other Purchased Professional and Technical Services 16,768.30

**Total Purchased Professional and Technical Services \$16,768.30**

**500 Other Purchased Services**

513 Contracted Carriers 67,969.88 9,834,508.25

516 Student Transportation Services From the IU 20,914.38

519 Student Transportation Services From Other Sources 2,890.86

530 Communications 4,291.95

**Total Other Purchased Services \$67,969.88 \$9,862,605.44**

**600 Supplies**

610 General Supplies 8,578.64

650 Supplies & Fees – Technology Related 42,795.00

**Total Supplies \$51,373.64**

**800 Other Objects**

810 Dues and Fees 297.00

**Total Other Objects \$297.00**

**Total 2700 Student Transportation Services \$67,969.88 \$10,111,195.74**

**General Fund (10)**

**2710 Supervision of Student Transportation Services**

Elementary                      Secondary                      Federal                      Total

<b>100</b>	<b><u>Personnel Services – Salaries</u></b>				
	100 Personnel Services – Salaries				119,515.19
<b>Total Personnel Services – Salaries</b>					<b>\$119,515.19</b>
<b>200</b>	<b><u>Personnel Services – Employee Benefits</u></b>				
	220 Social Security Contributions				8,904.18
	230 PSERS Retirement Contributions				35,437.22
	250 Unemployment Compensation				106.05
	260 Workers' Compensation				1,080.50
	270 Group Insurance – Self-Insurance				15,108.22
<b>Total Personnel Services – Employee Benefits</b>					<b>\$60,636.17</b>
<b>300</b>	<b><u>Purchased Professional and Technical Services</u></b>				
	390 Other Purchased Professional and Technical Services				16,768.30
<b>Total Purchased Professional and Technical Services</b>					<b>\$16,768.30</b>
<b>500</b>	<b><u>Other Purchased Services</u></b>				
	530 Communications				4,291.95
<b>Total Other Purchased Services</b>					<b>\$4,291.95</b>
<b>600</b>	<b><u>Supplies</u></b>				
	610 General Supplies				8,578.64
	650 Supplies & Fees – Technology Related				42,795.00
<b>Total Supplies</b>					<b>\$51,373.64</b>
<b>800</b>	<b><u>Other Objects</u></b>				
	810 Dues and Fees				297.00
<b>Total Other Objects</b>					<b>\$297.00</b>
<b>Total 2710 Supervision of Student Transportation Services</b>					<b>\$252,882.25</b>

General Fund (10)

2711 Supervision of Student Transportation Services – Head of Component

Elementary

Secondary

Federal

Total

100 Personnel Services – Salaries

100 Personnel Services – Salaries

119,515.19

**Total Personnel Services – Salaries**

**\$119,515.19**

200 Personnel Services – Employee Benefits

220 Social Security Contributions

8,904.18

230 PSERS Retirement Contributions

35,437.22

250 Unemployment Compensation

106.05

260 Workers' Compensation

1,080.50

270 Group Insurance – Self-Insurance

15,108.22

**Total Personnel Services – Employee Benefits**

**\$60,636.17**

300 Purchased Professional and Technical Services

390 Other Purchased Professional and Technical Services

16,768.30

**Total Purchased Professional and Technical Services**

**\$16,768.30**

500 Other Purchased Services

530 Communications

4,291.95

**Total Other Purchased Services**

**\$4,291.95**

600 Supplies

610 General Supplies

8,578.64

650 Supplies & Fees – Technology Related

42,795.00

**Total Supplies**

**\$51,373.64**

800 Other Objects

810 Dues and Fees

297.00

**Total Other Objects**

**\$297.00**

**Total 2711 Supervision of Student Transportation Services – Head of Component**

**\$252,882.25**

General Fund (10)

2720 Vehicle Operation Services

500 Other Purchased Services

513 Contracted Carriers

516 Student Transportation Services From the IU

519 Student Transportation Services From Other Sources

Total Other Purchased Services

Total 2720 Vehicle Operation Services

Elementary

Secondary

Federal

Total

67,969.88

8,662,928.82

20,914.38

2,890.86

\$67,969.88

\$8,686,734.06

\$67,969.88

\$8,686,734.06

LEA : 124151902 Coatesville Area SD

Printed 2/6/2018 2:59:17 PM

General Fund (10)

2750 Nonpublic Transportation

Elementary

Secondary

Federal

Total

500 Other Purchased Services

513 Contracted Carriers

1,171,579.43

**Total Other Purchased Services**

**\$1,171,579.43**

**Total 2750 Nonpublic Transportation**

**\$1,171,579.43**

**General Fund (10)**

**2800 Support Services – Central**

Elementary                      Secondary                      Federal                      Total

<b>100</b>	<b><u>Personnel Services – Salaries</u></b>				
	100 Personnel Services – Salaries				227,699.63
<b>Total Personnel Services – Salaries</b>					<b>\$227,699.63</b>
<b>200</b>	<b><u>Personnel Services – Employee Benefits</u></b>				
	220 Social Security Contributions				17,220.04
	230 PSERS Retirement Contributions				67,146.94
	240 Tuition Reimbursement				19,431.10
	250 Unemployment Compensation				207.40
	260 Workers' Compensation				2,058.56
	270 Group Insurance – Self-Insurance				42,962.70
<b>Total Personnel Services – Employee Benefits</b>					<b>\$149,026.74</b>
<b>300</b>	<b><u>Purchased Professional and Technical Services</u></b>				
	324 Professional Educational Services – Employee Training and Development Services				2,892.50
	330 Other Professional Services				285,264.70
	340 Technical Services				838,132.08
<b>Total Purchased Professional and Technical Services</b>					<b>\$1,126,289.28</b>
<b>400</b>	<b><u>Purchased Property Services</u></b>				
	430 Repairs and Maintenance Services				14,866.06
	440 Rentals				432,512.60
<b>Total Purchased Property Services</b>					<b>\$447,378.66</b>
<b>500</b>	<b><u>Other Purchased Services</u></b>				
	530 Communications				259,752.39
	549 Other Advertising/Public Relations				8,000.00
	580 Travel				144.21
<b>Total Other Purchased Services</b>					<b>\$267,896.60</b>
<b>600</b>	<b><u>Supplies</u></b>				
	610 General Supplies				17,670.19
	640 Books and Periodicals				961.00
	650 Supplies & Fees – Technology Related				335,782.67
<b>Total Supplies</b>					<b>\$354,413.86</b>
<b>700</b>	<b><u>Property</u></b>				
	756 Capitalized Technology Hardware and Equipment – Original				1,496.07
	758 Capitalized Technology Software - Original				48,890.61
	768 Capitalized Technology Software - Replacement				(3,180.60)
<b>Total Property</b>					<b>\$47,206.08</b>
<b>800</b>	<b><u>Other Objects</u></b>				
	810 Dues and Fees				3,165.50
<b>Total Other Objects</b>					<b>\$3,165.50</b>
<b>Total 2800 Support Services – Central</b>					<b>\$2,623,076.35</b>

LEA : 124151902 Coatesville Area SD

Printed 2/6/2018 2:59:17 PM

**General Fund (10)**

**2820 Information Services**

Elementary

Secondary

Federal

Total

**500 Other Purchased Services**

549 Other Advertising/Public Relations

8,000.00

**Total Other Purchased Services**

**\$8,000.00**

**Total 2820 Information Services**

**\$8,000.00**



LEA : 124151902 Coatesville Area SD

Printed 2/6/2018 2:59:17 PM

General Fund (10)

2823 Public Information Services

Elementary

Secondary

Federal

Total

500 Other Purchased Services

549 Other Advertising/Public Relations

8,000.00

**Total Other Purchased Services**

**\$8,000.00**

**Total 2823 Public Information Services**

**\$8,000.00**



General Fund (10)

2832 Recruitment and Placement Services

Elementary

Secondary

Federal

Total

300 Purchased Professional and Technical Services

324 Professional Educational Services – Employee Training and Development Services

350.00

330 Other Professional Services

264,854.52

**Total Purchased Professional and Technical Services**

**\$265,204.52**

400 Purchased Property Services

440 Rentals

1,615.44

**Total Purchased Property Services**

**\$1,615.44**

500 Other Purchased Services

580 Travel

59.36

**Total Other Purchased Services**

**\$59.36**

600 Supplies

610 General Supplies

2,847.94

640 Books and Periodicals

961.00

**Total Supplies**

**\$3,808.94**

800 Other Objects

810 Dues and Fees

3,115.50

**Total Other Objects**

**\$3,115.50**

**Total 2832 Recruitment and Placement Services**

**\$273,803.76**

General Fund (10)

2833 Staff Accounting Services

Elementary

Secondary

Federal

Total

100 Personnel Services – Salaries

100 Personnel Services – Salaries

227,699.63

**Total Personnel Services – Salaries**

**\$227,699.63**

200 Personnel Services – Employee Benefits

220 Social Security Contributions

17,220.04

230 PSERS Retirement Contributions

67,146.94

250 Unemployment Compensation

207.40

260 Workers' Compensation

2,058.56

270 Group Insurance – Self-Insurance

42,962.70

**Total Personnel Services – Employee Benefits**

**\$129,595.64**

**Total 2833 Staff Accounting Services**

**\$357,295.27**

General Fund (10)

2834 Staff Development Services – Non-Instructional, Certified Staff Only

Elementary

Secondary

Federal

Total

200 Personnel Services – Employee Benefits

240 Tuition Reimbursement

19,431.10

**Total Personnel Services – Employee Benefits**

**\$19,431.10**

**Total 2834 Staff Development Services – Non-Instructional, Certified Staff Only**

**\$19,431.10**

**General Fund (10)**

**2840 Data Processing Services**

Elementary                      Secondary                      Federal                      Total

**300 Purchased Professional and Technical Services**

324	Professional Educational Services – Employee Training and Development Services			2,542.50
330	Other Professional Services			20,410.18
340	Technical Services			838,132.08

**Total Purchased Professional and Technical Services** **\$861,084.76**

**400 Purchased Property Services**

430	Repairs and Maintenance Services			14,866.06
440	Rentals			430,897.16

**Total Purchased Property Services** **\$445,763.22**

**500 Other Purchased Services**

530	Communications			259,752.39
580	Travel			84.85

**Total Other Purchased Services** **\$259,837.24**

**600 Supplies**

610	General Supplies			14,822.25
650	Supplies & Fees – Technology Related			335,782.67

**Total Supplies** **\$350,604.92**

**700 Property**

756	Capitalized Technology Hardware and Equipment – Original			1,496.07
758	Capitalized Technology Software - Original			48,890.61
768	Capitalized Technology Software - Replacement			(3,180.60)

**Total Property** **\$47,206.08**

**800 Other Objects**

810	Dues and Fees			50.00
-----	---------------	--	--	-------

**Total Other Objects** **\$50.00**

**Total 2840 Data Processing Services** **\$1,964,546.22**

LEA : 124151902 Coatesville Area SD

Printed 2/6/2018 2:59:17 PM

General Fund (10)

2900 Other Support Services

Elementary

Secondary

Federal

Total

300 Purchased Professional and Technical Services

330 Other Professional Services

61,294.83

61,294.83

**Total Purchased Professional and Technical Services**

**\$61,294.83**

**\$61,294.83**

500 Other Purchased Services

595 IU Payments By Withholding

49,811.20

**Total Other Purchased Services**

**\$49,811.20**

**Total 2900 Other Support Services**

**\$61,294.83**

**\$111,106.03**

General Fund (10)

2910 Support Services Not Listed Elsewhere In the 2000 Series

Elementary

Secondary

Federal

Total

300 Purchased Professional and Technical Services

330 Other Professional Services

61,294.83

61,294.83

**Total Purchased Professional and Technical Services**

**\$61,294.83**

**\$61,294.83**

500 Other Purchased Services

595 IU Payments By Withholding

49,811.20

**Total Other Purchased Services**

**\$49,811.20**

**Total 2910 Support Services Not Listed Elsewhere In the 2000 Series**

**\$61,294.83**

**\$111,106.03**



**General Fund (10)**

<b>3000 Operation of Non-Instructional Services</b>	<b><u>Total</u></b>
<b>100 <u>Personnel Services – Salaries</u></b>	
100 Personnel Services – Salaries	559,070.26
<b>Total Personnel Services – Salaries</b>	<b>\$559,070.26</b>
<b>200 <u>Personnel Services – Employee Benefits</u></b>	
220 Social Security Contributions	42,381.57
230 PSERS Retirement Contributions	137,498.50
250 Unemployment Compensation	1,421.12
260 Workers’ Compensation	5,054.04
270 Group Insurance – Self-Insurance	40,817.06
<b>Total Personnel Services – Employee Benefits</b>	<b>\$227,172.29</b>
<b>300 <u>Purchased Professional and Technical Services</u></b>	
324 Professional Educational Services – Employee Training and Development Services	7,719.28
330 Other Professional Services	124,560.26
<b>Total Purchased Professional and Technical Services</b>	<b>\$132,279.54</b>
<b>400 <u>Purchased Property Services</u></b>	
430 Repairs and Maintenance Services	26,870.91
<b>Total Purchased Property Services</b>	<b>\$26,870.91</b>
<b>500 <u>Other Purchased Services</u></b>	
510 Student Transportation Services	135,321.08
520 Insurance – General	11,219.00
580 Travel	1,003.53
<b>Total Other Purchased Services</b>	<b>\$147,543.61</b>
<b>600 <u>Supplies</u></b>	
610 General Supplies	101,207.66
<b>Total Supplies</b>	<b>\$101,207.66</b>
<b>700 <u>Property</u></b>	
752 Capital Equipment – Original and Additional	21,698.97
<b>Total Property</b>	<b>\$21,698.97</b>
<b>800 <u>Other Objects</u></b>	
810 Dues and Fees	16,579.95
<b>Total Other Objects</b>	<b>\$16,579.95</b>
<b>Total 3000 Operation of Non-Instructional Services</b>	<b>\$1,232,423.19</b>

General Fund (10)

3200 Student Activities

Elementary                      Secondary                      Federal                      Total

100 Personnel Services – Salaries

100 Personnel Services – Salaries 558,558.76

**Total Personnel Services – Salaries \$558,558.76**

200 Personnel Services – Employee Benefits

220 Social Security Contributions 42,343.08

230 PSERS Retirement Contributions 137,344.92

250 Unemployment Compensation 1,421.12

260 Workers' Compensation 5,049.40

270 Group Insurance – Self-Insurance 40,817.06

**Total Personnel Services – Employee Benefits \$226,975.58**

300 Purchased Professional and Technical Services

324 Professional Educational Services – Employee Training and Development Services 7,719.28

330 Other Professional Services 124,560.26

**Total Purchased Professional and Technical Services \$132,279.54**

400 Purchased Property Services

430 Repairs and Maintenance Services 26,870.91

**Total Purchased Property Services \$26,870.91**

500 Other Purchased Services

510 Student Transportation Services 135,321.08

520 Insurance – General 11,219.00

**Total Other Purchased Services \$146,540.08**

600 Supplies

610 General Supplies 77,899.36

**Total Supplies \$77,899.36**

700 Property

752 Capital Equipment – Original and Additional 21,698.97

**Total Property \$21,698.97**

800 Other Objects

810 Dues and Fees 16,579.95

**Total Other Objects \$16,579.95**

**Total 3200 Student Activities \$1,207,403.15**

**General Fund (10)**

**3300 Community Services**

**100 Personnel Services – Salaries**

	<u>Elementary</u>	<u>Secondary</u>	<u>Federal</u>	<u>Total</u>
100 Personnel Services – Salaries			511.50	511.50
<b>Total Personnel Services – Salaries</b>			<b>\$511.50</b>	<b>\$511.50</b>

**200 Personnel Services – Employee Benefits**

220 Social Security Contributions			38.49	38.49
230 PSERS Retirement Contributions			153.58	153.58
260 Workers’ Compensation			4.64	4.64
<b>Total Personnel Services – Employee Benefits</b>			<b>\$196.71</b>	<b>\$196.71</b>

**500 Other Purchased Services**

580 Travel			1,003.53	1,003.53
<b>Total Other Purchased Services</b>			<b>\$1,003.53</b>	<b>\$1,003.53</b>

**600 Supplies**

610 General Supplies			23,308.30	23,308.30
<b>Total Supplies</b>			<b>\$23,308.30</b>	<b>\$23,308.30</b>

**Total 3300 Community Services**

			<b>\$25,020.04</b>	<b>\$25,020.04</b>
--	--	--	--------------------	--------------------

**General Fund (10)**

**5000 Other Expenditures and Financing Uses**

**Total**

**800 Other Objects**

830 Interest	7,203,626.12
880 Refunds of Prior Years' Receipts	190,442.22

<b>Total Other Objects</b>	<b>\$7,394,068.34</b>
----------------------------	-----------------------

**900 Other Uses of Funds**

910 Redemption of Principal	7,950,334.40
932 Capital Reserve Fund Transfers Applicable To Fund 32	1,000,000.00

<b>Total Other Uses of Funds</b>	<b>\$8,950,334.40</b>
----------------------------------	-----------------------

<b>Total 5000 Other Expenditures and Financing Uses</b>	<b>\$16,344,402.74</b>
---	------------------------

LEA : 124151902 Coatesville Area SD

Printed 2/6/2018 2:59:22 PM

General Fund (10)

	<u>Elementary</u>	<u>Secondary</u>	<u>Federal</u>	<u>Total</u>
<b>5100 Debt Service / Other Expenditures and Financing Uses</b>				
<b>800 Other Objects</b>				
830 Interest				7,203,626.12
880 Refunds of Prior Years' Receipts				190,442.22
<b>Total Other Objects</b>				<b>\$7,394,068.34</b>
<b>900 Other Uses of Funds</b>				
910 Redemption of Principal				7,950,334.40
<b>Total Other Uses of Funds</b>				<b>\$7,950,334.40</b>
<b>Total 5100 Debt Service / Other Expenditures and Financing Uses</b>				<b>\$15,344,402.74</b>

General Fund (10)

	<u>Elementary</u>	<u>Secondary</u>	<u>Federal</u>	<u>Total</u>
<b>5110 Debt Service</b>				
<b>800 Other Objects</b>				
830 Interest				7,203,626.12
<b>Total Other Objects</b>				<b>\$7,203,626.12</b>
<b>900 Other Uses of Funds</b>				
910 Redemption of Principal				7,950,334.40
<b>Total Other Uses of Funds</b>				<b>\$7,950,334.40</b>
<b>Total 5110 Debt Service</b>				<b>\$15,153,960.52</b>

LEA : 124151902 Coatesville Area SD

Printed 2/6/2018 2:59:22 PM

General Fund (10)

5130 Refund of Prior Year Revenues / Receipts

Elementary

Secondary

Federal

Total

800 Other Objects

880 Refunds of Prior Years' Receipts

190,442.22

**Total Other Objects**

**\$190,442.22**

**Total 5130 Refund of Prior Year Revenues / Receipts**

**\$190,442.22**

General Fund (10)

5200 Interfund Transfers – Out

Elementary

Secondary

Federal

Total

900 Other Uses of Funds

932 Capital Reserve Fund Transfers Applicable To Fund 32

1,000,000.00

**Total Other Uses of Funds**

**\$1,000,000.00**

**Total 5200 Interfund Transfers – Out**

**\$1,000,000.00**



LEA : 124151902 Coatesville Area SD

Printed 2/6/2018 2:59:22 PM

General Fund (10)

5230 Capital Projects Fund Transfers

Elementary

Secondary

Federal

Total

900 Other Uses of Funds

932 Capital Reserve Fund Transfers Applicable To Fund 32

1,000,000.00

**Total Other Uses of Funds**

**\$1,000,000.00**

**Total 5230 Capital Projects Fund Transfers**

**\$1,000,000.00**

**Other Capital Projects Fund (39)**

**4000 Facilities Acquisition, Construction and Improvement Services**

**Total**

**300 Purchased Professional and Technical Services**

330 Other Professional Services

130,287.07

**Total Purchased Professional and Technical Services**

**\$130,287.07**

**400 Purchased Property Services**

450 Construction Services

1,719,780.76

**Total Purchased Property Services**

**\$1,719,780.76**

**Total 4000 Facilities Acquisition, Construction and Improvement Services**

**\$1,850,067.83**

LEA : 124151902 Coatesville Area SD

Printed 2/6/2018 2:59:21 PM

Other Capital Projects Fund (39)

	<u>Elementary</u>	<u>Secondary</u>	<u>Federal</u>	<u>Total</u>
<b>4600 Existing Building Improvement Services</b>				
<b>300 <u>Purchased Professional and Technical Services</u></b>				
330 Other Professional Services				130,287.07
<b>Total Purchased Professional and Technical Services</b>				<b>\$130,287.07</b>
<b>400 <u>Purchased Property Services</u></b>				
450 Construction Services				1,719,780.76
<b>Total Purchased Property Services</b>				<b>\$1,719,780.76</b>
<b>Total 4600 Existing Building Improvement Services</b>				<b>\$1,850,067.83</b>

LEA : 124151902 Coatesville Area SD

Printed 2/6/2018 2:59:22 PM

**Other Capital Projects Fund (39)**

**5000 Other Expenditures and Financing Uses**

**Total**

**800 Other Objects**

880 Refunds of Prior Years' Receipts

29,361.00

**Total Other Objects**

**\$29,361.00**

**Total 5000 Other Expenditures and Financing Uses**

**\$29,361.00**

LEA : 124151902 Coatesville Area SD

Printed 2/6/2018 2:59:22 PM

Other Capital Projects Fund (39)

5100 Debt Service / Other Expenditures and Financing Uses

Elementary

Secondary

Federal

Total

800 Other Objects

880 Refunds of Prior Years' Receipts

29,361.00

**Total Other Objects**

**\$29,361.00**

**Total 5100 Debt Service / Other Expenditures and Financing Uses**

**\$29,361.00**

LEA : 124151902 Coatesville Area SD

Printed 2/6/2018 2:59:22 PM

Other Capital Projects Fund (39)

5130 Refund of Prior Year Revenues / Receipts

Elementary

Secondary

Federal

Total

800 Other Objects

880 Refunds of Prior Years' Receipts

29,361.00

**Total Other Objects**

**\$29,361.00**

**Total 5130 Refund of Prior Year Revenues / Receipts**

**\$29,361.00**

LEA : 124151902 Coatesville Area SD

Printed 2/6/2018 2:59:19 PM

**Debt Service Fund (40)**

**2000 Support Services**

**800 Other Objects**

810 Dues and Fees

660,305.10

**Total Other Objects**

**\$660,305.10**

**Total 2000 Support Services**

**\$660,305.10**

LEA : 124151902 Coatesville Area SD

Printed 2/6/2018 2:59:19 PM

Debt Service Fund (40)

2300 Support Services – Administration

Elementary

Secondary

Federal

Total

800 Other Objects

810 Dues and Fees

660,305.10

**Total Other Objects**

**\$660,305.10**

**Total 2300 Support Services – Administration**

**\$660,305.10**



LEA : 124151902 Coatesville Area SD

Printed 2/6/2018 2:59:19 PM

Debt Service Fund (40)

2390 Other Administration Services

Elementary

Secondary

Federal

Total

800 Other Objects

810 Dues and Fees

660,305.10

**Total Other Objects**

**\$660,305.10**

**Total 2390 Other Administration Services**

**\$660,305.10**

LEA : 124151902 Coatesville Area SD

Printed 2/6/2018 2:59:23 PM

**Debt Service Fund (40)**

**5000 Other Expenditures and Financing Uses**

Total

**800 Other Objects**

830 Interest 1,460,745.35

**Total Other Objects \$1,460,745.35**

**900 Other Uses of Funds**

910 Redemption of Principal 63,510,000.00

**Total Other Uses of Funds \$63,510,000.00**

**Total 5000 Other Expenditures and Financing Uses \$64,970,745.35**

Debt Service Fund (40)

5100 Debt Service / Other Expenditures and Financing Uses	<u>Elementary</u>	<u>Secondary</u>	<u>Federal</u>	<u>Total</u>
800 <u>Other Objects</u>				
830 Interest				1,460,745.35
<b>Total Other Objects</b>				<b>\$1,460,745.35</b>
900 <u>Other Uses of Funds</u>				
910 Redemption of Principal				63,510,000.00
<b>Total Other Uses of Funds</b>				<b>\$63,510,000.00</b>
<b>Total 5100 Debt Service / Other Expenditures and Financing Uses</b>				<b>\$64,970,745.35</b>

Debt Service Fund (40)

5120 Debt Service – Refunded Bonds

Elementary

Secondary

Federal

Total

800 Other Objects

830 Interest

1,460,745.35

**Total Other Objects**

**\$1,460,745.35**

900 Other Uses of Funds

910 Redemption of Principal

63,510,000.00

**Total Other Uses of Funds**

**\$63,510,000.00**

**Total 5120 Debt Service – Refunded Bonds**

**\$64,970,745.35**

	<u>General Fund(10)</u>	<u>Public Purpose Trust(27)</u>	<u>Other Compt Approved (28)</u>	<u>Athletic / Activity(29)</u>	<u>Capital Reserve (690. 1850)(31)</u>
<b>1000 Instruction</b>					
1100 Regular Programs - Elementary / Secondary	70,855,612.51				
1200 Special Programs - Elementary / Secondary	38,765,812.19				
1300 Vocational Education	3,308,206.36				
1400 Other Instructional Programs - Elementary / Secondary	299,733.00				
1500 Nonpublic School Programs	112,067.83				
1800 Pre-Kindergarten	411,608.73				
<b>Total Instruction</b>	<b>\$113,753,040.62</b>				
<b>2000 Support Services</b>					
2100 Support Services - Students	4,138,608.60				
2200 Support Services - Instructional Staff	2,482,738.65				
2300 Support Services - Administration	7,767,209.27				
2400 Support Services - Pupil Health	1,122,560.42				
2500 Support Services - Business	1,187,946.29				
2600 Operation and Maintenance of Plant Services	9,286,237.97				
2700 Student Transportation Services	10,111,195.74				
2800 Support Services - Central	2,623,076.35				
2900 Other Support Services	111,106.03				
<b>Total Support Services</b>	<b>\$38,830,679.32</b>				
<b>3000 Operation of Non-Instructional Services</b>					
3200 Student Activities	1,207,403.15				
3300 Community Services	25,020.04				
<b>Total Operation of Non-Instructional Services</b>	<b>\$1,232,423.19</b>				
<b>4000 Facilities Acquisition, Construction and Improvement Services</b>					
4600 Existing Building Improvement Services					
<b>Total Facilities Acquisition, Construction and Improvement Services</b>					
<b>5000 Other Expenditures and Financing Uses</b>					
5100 Debt Service / Other Expenditures and Financing Uses	15,344,402.74				
5200 Interfund Transfers - Out	1,000,000.00				
<b>Total Other Expenditures and Financing Uses</b>	<b>\$16,344,402.74</b>				
<b>TOTAL ACTUAL EXPENDITURES &amp; OTHER FINANCING USES</b>	<b>\$170,160,545.87</b>				

LEA : 124151902 Coatesville Area SD

Printed 2/6/2018 2:59:25 PM

	<u>Capital Reserve (1431)(32)</u>	<u>Other Capital Projects Fund(39)</u>	<u>Debt Service(40)</u>	<u>Permanent(90)</u>	<u>Total</u>
<b>1000 Instruction</b>					
1100 Regular Programs - Elementary / Secondary					70,855,612.51
1200 Special Programs - Elementary / Secondary					38,765,812.19
1300 Vocational Education					3,308,206.36
1400 Other Instructional Programs - Elementary / Secondary					299,733.00
1500 Nonpublic School Programs					112,067.83
1800 Pre-Kindergarten					411,608.73
<b>Total Instruction</b>					<b>\$113,753,040.62</b>
<b>2000 Support Services</b>					
2100 Support Services - Students					4,138,608.60
2200 Support Services - Instructional Staff					2,482,738.65
2300 Support Services - Administration			660,305.10		8,427,514.37
2400 Support Services - Pupil Health					1,122,560.42
2500 Support Services - Business					1,187,946.29
2600 Operation and Maintenance of Plant Services					9,286,237.97
2700 Student Transportation Services					10,111,195.74
2800 Support Services - Central					2,623,076.35
2900 Other Support Services					111,106.03
<b>Total Support Services</b>			<b>\$660,305.10</b>		<b>\$39,490,984.42</b>
<b>3000 Operation of Non-Instructional Services</b>					
3200 Student Activities					1,207,403.15
3300 Community Services					25,020.04
<b>Total Operation of Non-Instructional Services</b>					<b>\$1,232,423.19</b>
<b>4000 Facilities Acquisition, Construction and Improvement Services</b>					
4600 Existing Building Improvement Services		1,850,067.83			1,850,067.83
<b>Total Facilities Acquisition, Construction and Improvement Services</b>		<b>\$1,850,067.83</b>			<b>\$1,850,067.83</b>
<b>5000 Other Expenditures and Financing Uses</b>					
5100 Debt Service / Other Expenditures and Financing Uses		29,361.00	64,970,745.35		80,344,509.09
5200 Interfund Transfers - Out					1,000,000.00
<b>Total Other Expenditures and Financing Uses</b>		<b>\$29,361.00</b>	<b>\$64,970,745.35</b>		<b>\$81,344,509.09</b>
<b>TOTAL ACTUAL EXPENDITURES &amp; OTHER FINANCING USES</b>		<b>\$1,879,428.83</b>	<b>\$65,631,050.45</b>		<b>\$237,671,025.15</b>

LEA : 124151902 Coatesville Area SD

Printed 2/6/2018 2:59:29 PM

**PSERS Salary Data (Salary Data should relate to the General Fund only)**

<b>Amount Description</b>	<b>Amount</b>
Total Salary Base for salaries subject to PSERS withholding	46,708,366.23
Total Federally Funded salaries subject to PSERS withholding	1,881,113.01
	<hr/>

**Title I Expenditure Data**

<b>Amount Description</b>	<b>Amount</b>
Expenditures Funded with Current Title I Funds	1,528,365.93
Expenditures Funded with Carry over Title I Funds	339,244.31
<b>Total Title I Expenditure Data</b>	<hr/> <b>\$1,867,610.24</b> <hr/>

**Title I ARRA Amount**

<b>Amount Description</b>	<b>Amount</b>
Portion of Total Title I Expenditures funded with ARRA Title I	<hr/>

**Benefits for Staff Relative to Collective Bargaining Agreements**

	OBJECT	COVERED	NOT COVERED	TOTAL
<b>10 General Fund</b>				
	211 Medical Insurance			
	212 Dental Insurance			
	215 Eye Care Insurance			
	216 Prescription Insurance			
	271 Self-Insurance Medical Benefits	7,353,588.67		7,353,588.67
	272 Self-Insurance Dental Benefits	757,672.16		757,672.16
	275 Self-Insurance Eye Care Benefits	149,790.36		149,790.36
	276 Self-Insurance Prescription Benefits	2,473,843.12		2,473,843.12
	<b>FUND TOTAL</b>	<b>\$10,734,894.31</b>		<b>\$10,734,894.31</b>
<b>50 Enterprise Fund</b>				
	211 Medical Insurance			
	212 Dental Insurance			
	215 Eye Care Insurance			
	216 Prescription Insurance			
	271 Self-Insurance Medical Benefits	200,130.71		200,130.71
	272 Self-Insurance Dental Benefits	14,304.88		14,304.88
	275 Self-Insurance Eye Care Benefits	2,844.80		2,844.80
	276 Self-Insurance Prescription Benefits	48,953.50		48,953.50
	<b>FUND TOTAL</b>	<b>\$266,233.89</b>		<b>\$266,233.89</b>
<b>60 Internal Service Fund</b>	<b>No Self Insurance data to report</b>			
	211 Medical Insurance			
	212 Dental Insurance			
	215 Eye Care Insurance			
	216 Prescription Insurance			
	271 Self-Insurance Medical Benefits			
	272 Self-Insurance Dental Benefits			
	275 Self-Insurance Eye Care Benefits			
	276 Self-Insurance Prescription Benefits			
	<b>FUND TOTAL</b>			
<b>Total of All Funds</b>		<b>\$11,001,128.20</b>		<b>\$11,001,128.20</b>



LEA : 124151902 Coatesville Area SD

Printed 2/6/2018 2:59:31 PM

Function	Special Education (Prior Year)	Nonspecial Education (Prior Year)	Total (Prior Year)	Special Education (Current Year)	Nonspecial Education (Current Year)	Total (Current Year)
2120 Guidance Services	556,495.12	2,297,326.01	2,853,821.13	611,576.30	2,082,592.41	2,694,168.71
2140 Psychological Services	201,938.25	833,642.54	1,035,580.79	209,180.63	712,319.93	921,500.56
2150 Speech Pathology and Audiology Services						
2160 Social Work Services						
2260 Instruction and Curriculum Development Services	179,454.22	740,823.85	920,278.07	167,334.17	569,820.76	737,154.93
2350 Legal and Accounting Services	187,377.37	773,532.23	960,909.60	225,865.22	769,135.74	995,000.96
2420 Medical Services	205,645.83	848,948.18	1,054,594.01	254,821.21	867,739.21	1,122,560.42
2440 Nursing Services						
2700 Student Transportation Services	1,785,969.87	7,372,850.00	9,158,819.87	2,295,241.43	7,815,954.31	10,111,195.74
<b>Total</b>	<b>\$3,116,880.66</b>	<b>\$12,867,122.81</b>	<b>\$15,984,003.47</b>	<b>\$3,764,018.96</b>	<b>\$12,817,562.36</b>	<b>\$16,581,581.32</b>

(PRINCIPAL AMOUNTS ONLY)

**GOVERNMENTAL FUNDS/ ACTIVITIES**

	Short-Term Borrowing	General Obligation Bonds/Notes	Authority Building Obligations	Other Long-Term Debt	Other Post-Employment Benefits (OPEB)	Compensated Absences	Net Pension Liability	Total
1. Debt at Beginning of Fiscal Year		174,958,207.35			5,299,690.00	1,606,464.00	143,960,000.00	325,824,361.35
2. Additional Debt Incurred During Year		57,755,000.00			161,927.00		35,263,000.00	93,179,927.00
3. Retirements and Repayments		71,460,334.40				222,486.29		71,682,820.69
4. Debt at End of Fiscal Year		161,252,872.95			5,461,617.00	1,383,977.71	179,223,000.00	347,321,467.66
5. Accreted Interest at End Of Fiscal Year		3,657,127.05						3,657,127.05
6. Total Debt and Accreted Interest		164,910,000.00			5,461,617.00	1,383,977.71	179,223,000.00	350,978,594.71
7. Current Portion P&I - Due within 1 year		14,286,268.68						14,286,268.68
8. Interest Paid during current fiscal year		8,596,631.87						8,596,631.87

(PRINCIPAL AMOUNTS ONLY)

**PROPRIETARY FUNDS**

	Short-Term Borrowing	General Obligation Bonds/Notes	Authority Building Obligations	Other Long-Term Debt	Other Post-Employment Benefits (OPEB)	Compensated Absences	Net Pension Liability	Total
1. Debt at Beginning of Fiscal Year					85,694.00	20,018.00	3,104,000.00	3,209,712.00
2. Additional Debt Incurred During Year						49,266.00	389,000.00	438,266.00
3. Retirements and Repayments					2,784.00			2,784.00
4. Debt at End of Fiscal Year					82,910.00	69,284.00	3,493,000.00	3,645,194.00
5. Accreted Interest at End Of Fiscal Year								
6. Total Debt and Accreted Interest					82,910.00	69,284.00	3,493,000.00	3,645,194.00
7. Current Portion P&I - Due within 1 year								
8. Interest Paid during current fiscal year								

**Total Principal and Interest Payments Made by Your School - All Funds**

Function	Fund		Principal (910)	Principal (920)	Interest (830)	Total (Principal +Interest)	Misc Other Uses (990)
5110	10	General Fund	7,950,334.40		7,203,626.12	15,153,960.52	
5110	20	Special Revenue Funds					
5110	30	Capital Projects Funds					
5110	40	Debt Service Fund					
5110	90	Permanent Fund					
5120	10	General Fund					
5120	20	Special Revenue Funds					
5120	30	Capital Projects Funds					
5120	40	Debt Service Fund	63,510,000.00		1,460,745.35	64,970,745.35	
<b>Total Debt Payments - Governmental Funds</b>			<b>\$71,460,334.40</b>		<b>\$8,664,371.47</b>	<b>\$80,124,705.87</b>	

Function	Fund		Principal (910)	Principal (920)	Interest (830)	Total (Principal +Interest)
5110	50	Enterprise Fund				
5110	60	Internal Service Fund				
5120	50	Enterprise Fund				
5120	60	Internal Service Fund				
<b>Total Debt Payments - Proprietary Funds</b>						

**Debt Details**  
**Governmental Funds/ Activities**

Debt Category	Debt Issue Date (MM/YYYY)	Principal Amounts Only			Debt at End of Fiscal Year	Current Portion Due Within One Year (Principal and Interest)	Interest Paid During Fiscal Year
		Debt at Beginning of Fiscal Year	Additions	Reductions / Repayments			
General Obligation Bonds/Notes – CIB	03/2017		57,755,000.00		57,755,000.00	2,310,897.92	
General Obligation Bonds/Notes – CIB	04/2014	8,745,000.00		5,000.00	8,740,000.00	346,200.00	341,300.00
General Obligation Bonds/Notes – CIB	04/2014	3,415,000.00		1,690,000.00	1,725,000.00	1,744,872.00	53,644.25
General Obligation Bonds/Notes – CIB	07/2010	53,400,000.00		10,000.00	53,390,000.00	2,415,631.26	2,405,981.26
General Obligation Bonds/Notes – CIB	08/2009	5,195,000.00		5,195,000.00			90,912.50
General Obligation Bonds/Notes – CIB	08/2009	21,970,000.00		5,000.00	21,965,000.00	1,063,667.50	1,058,902.50
General Obligation Bonds/Notes – CIB	08/2007	63,515,000.00		63,515,000.00			4,645,891.36
General Obligation Bonds/Notes – CAB	08/2013	18,718,207.35		1,040,334.40	17,677,872.95	6,405,000.00	
Compensated Absences		1,606,464.00		222,486.29	1,383,977.71		
Other Post-Employment Benefits (OPEB)		5,299,690.00	161,927.00		5,461,617.00		
Net Pension Liability		143,960,000.00	35,263,000.00		179,223,000.00		
<b>Totals for Debt Entered:</b>		<b>\$325,824,361.35</b>	<b>\$93,179,927.00</b>	<b>\$71,682,820.69</b>	<b>\$347,321,467.66</b>	<b>\$14,286,268.68</b>	<b>\$8,596,631.87</b>

**Bond Details**  
**Proprietary Funds**

Debt Category	Debt Issue Date (MM/YYYY)	Principal Amounts Only			Debt at End of Fiscal Year	Current Portion Due Within One Year (Principal and Interest)	Interest Paid During Fiscal Year
		Debt at Beginning of Fiscal Year	Additions	Reductions / Repayments			
Compensated Absences		20,018.00	49,266.00		69,284.00		
Other Post-Employment Benefits (OPEB)		85,694.00		2,784.00	82,910.00		
Net Pension Liability		3,104,000.00	389,000.00		3,493,000.00		
<b>Totals for Debt Entered:</b>		<b>\$3,209,712.00</b>	<b>\$438,266.00</b>	<b>\$2,784.00</b>	<b>\$3,645,194.00</b>		

LEA : 124151902 Coatesville Area SD

Printed 2/6/2018 2:59:31 PM

**Accreted Interest Detail**  
**Governmental Funds/ Activities**

Debt Category	Debt Issue Date (MM/YYYY)	Beginning Accreted Interest	Additions	Reductions	Ending Accreted Interest	Ending bond Principal	Ending Principal Plus Accreted Interest
General Obligation Bonds/Notes – CAB	08/2013	3,736,792.65		79,665.60	3,657,127.05	17,677,872.95	21,335,000.00
<b>Totals for Debt Entered:</b>		<b>\$3,736,792.65</b>		<b>\$79,665.60</b>	<b>\$3,657,127.05</b>	<b>\$17,677,872.95</b>	<b>\$21,335,000.00</b>

**General Fund (10)**

**Section 1: Tuition/Purchased Services as Reported within Expenditure Detail**

	Amount
Tuition Reported in General Fund Expenditures 1000-560	40,241,782.72
Purchased Services in General Fund Expenditures 1000-594 and 1000-597	1,304.48
<b>Section 1 Total</b>	<b>\$40,243,087.20</b>

**Section 2: Tuition Paid to Institution Types During Fiscal Year**

	Tuition Paid For Nonspecial Education	Tuition Paid For Special Education	Total
1 1306 Institutions			
2 Institutionalized Children's Programs		1,304.48	1,304.48
3 Juveniles Incarcerated in Adult Facilities	71,011.63		71,011.63
4 Residential Treatment Facilities			
5 Other Local Education Agencies	139,284.19	152,057.67	291,341.86
6 Brick and Mortar Charter Schools	19,766,937.42	10,850,553.70	30,617,491.12
7 Cyber Charter Schools	2,352,964.73	1,018,118.09	3,371,082.82
8 Career and Technology Centers	2,630,736.00		2,630,736.00
9 Approved Private Schools		2,877,266.06	2,877,266.06
10 PA Chartered Schools for the Deaf and Blind			
11 Private Residential Rehabilitative Institutions	95,531.76		95,531.76
12 Juvenile Detention Centers		63,543.47	63,543.47
13 Special Program Jointures			
14 Other Tuition Not Included Elsewhere In This Section	223,778.00		223,778.00
<b>Section 2 Total</b>	<b>\$25,280,243.73</b>	<b>\$14,962,843.47</b>	<b>\$40,243,087.20</b>

**Food Service / Cafeteria Operations Fund (51)**

**3000 Operation of Non-Instructional Services**

**Total**

**100 Personnel Services – Salaries**

100 Personnel Services – Salaries 945,843.00

**Total Personnel Services – Salaries \$945,843.00**

**200 Personnel Services – Employee Benefits**

220 Social Security Contributions 67,326.00

230 PSERS Retirement Contributions 266,755.00

250 Unemployment Compensation 4,083.00

260 Workers' Compensation 8,105.00

270 Group Insurance – Self-Insurance 267,642.00

299 All Other Employee Benefits 88,216.00

**Total Personnel Services – Employee Benefits \$702,127.00**

**300 Purchased Professional and Technical Services**

324 Professional Educational Services – Employee Training and Development Services 809.00

340 Technical Services 5,214.00

390 Other Purchased Professional and Technical Services 32,828.00

**Total Purchased Professional and Technical Services \$38,851.00**

**400 Purchased Property Services**

410 Cleaning Services 2,030.00

430 Repairs and Maintenance Services 19,907.00

440 Rentals 7,209.00

**Total Purchased Property Services \$29,146.00**

**500 Other Purchased Services**

530 Communications 54.00

580 Travel 1,762.00

**Total Other Purchased Services \$1,816.00**

**600 Supplies**

610 General Supplies 58,448.00

630 Food 1,468,454.00

**Total Supplies \$1,526,902.00**

**700 Property**

740 Depreciation 36,019.00

**Total Property \$36,019.00**

**800 Other Objects**

810 Dues and Fees 495.00

890 Miscellaneous Expenditures 33.00

**Total Other Objects \$528.00**

**Total 3000 Operation of Non-Instructional Services \$3,281,232.00**

**Food Service / Cafeteria Operations Fund (51)**

	<u>Elementary</u>	<u>Secondary</u>	<u>Federal</u>	<u>Total</u>
<b>3100 Food Services</b>				
<b>100 Personnel Services – Salaries</b>				
100 Personnel Services – Salaries				945,843.00
<b>Total Personnel Services – Salaries</b>				<b>\$945,843.00</b>
<b>200 Personnel Services – Employee Benefits</b>				
220 Social Security Contributions				67,326.00
230 PSERS Retirement Contributions				266,755.00
250 Unemployment Compensation				4,083.00
260 Workers' Compensation				8,105.00
270 Group Insurance – Self-Insurance				267,642.00
299 All Other Employee Benefits				88,216.00
<b>Total Personnel Services – Employee Benefits</b>				<b>\$702,127.00</b>
<b>300 Purchased Professional and Technical Services</b>				
324 Professional Educational Services – Employee Training and Development Services				809.00
340 Technical Services				5,214.00
390 Other Purchased Professional and Technical Services				32,828.00
<b>Total Purchased Professional and Technical Services</b>				<b>\$38,851.00</b>
<b>400 Purchased Property Services</b>				
410 Cleaning Services				2,030.00
430 Repairs and Maintenance Services				19,907.00
440 Rentals				7,209.00
<b>Total Purchased Property Services</b>				<b>\$29,146.00</b>
<b>500 Other Purchased Services</b>				
530 Communications				54.00
580 Travel				1,762.00
<b>Total Other Purchased Services</b>				<b>\$1,816.00</b>
<b>600 Supplies</b>				
610 General Supplies				58,448.00
630 Food				1,468,454.00
<b>Total Supplies</b>				<b>\$1,526,902.00</b>
<b>700 Property</b>				
740 Depreciation				36,019.00
<b>Total Property</b>				<b>\$36,019.00</b>
<b>800 Other Objects</b>				
810 Dues and Fees				495.00
890 Miscellaneous Expenditures				33.00
<b>Total Other Objects</b>				<b>\$528.00</b>
<b>Total 3100 Food Services</b>				<b>\$3,281,232.00</b>



	<u>Food Service(51)</u>	<u>Child Care Operations(52)</u>	<u>Other Enterprise(58)</u>	<u>Internal Service(60)</u>	<u>Total</u>
<b>3000 <u>Operation of Non-Instructional Services</u></b>					
3100 Food Services	3,281,232.00				3,281,232.00
<b>Total Operation of Non-Instructional Services</b>	<b>\$3,281,232.00</b>				<b>\$3,281,232.00</b>
<b>TOTAL ACTUAL EXPENDITURES &amp; OTHER FINANCING USES</b>	<b>\$3,281,232.00</b>				<b>\$3,281,232.00</b>