

LEA Name : Coatesville Area SD
Address : 3030 CG Zinn Rd
Thorndale , PA 19372

County : Chester
AUN Number : 124151902
LEA Type : SD

Annual Financial Report Accuracy Certification Statement

For Fiscal Year Ending
6/30/2018

Pennsylvania Department of Education
&
Office of Comptroller Operations

PDE-2056: Intermediate Unit
PDE-2057: School District, AVTS/CTC, Charter School,
and Special Program Jointure

CERTIFICATION: By signing this page I agree that the electronic data submitted is a complete and accurate statement of the financial operations and status of the local education agency for the fiscal year. It has been prepared in accordance with generally accepted accounting principles and established Commonwealth of PA reporting guidelines.



Chief School Administrator Signature



Board Secretary Signature

Date

11/22/18

Date

11-27-18

Jeffrey Ammerman

Contact Person

(610)466-2403

Ext :

Contact Person Telephone Number

ammermanj@casdschools.org

Contact Person E-mail Address

Contact Person Fax Number

Audit Certification

Annual Financial Report:

For Fiscal Year Ending 6/30/2018

(Pursuant to PA School Code Section 218(b))

LEA Name : Coatesville Area SD

AUN Number : 124151902

County : Chester

Audit Certification Due:
12/31/2018

This certification is applicable to the Annual Financial Report data submitted through the Consolidated Financial Reporting System on: 11/27/2018 Date

Auditing Firm:

Maillie

140 Whitaker Avenue

Mont Clare , PA , 19453-

Auditor Contact Name: Anthony Rapp

Auditor Phone: (610)482-3156

Auditor E-mail: arapp@maillie.com

CERTIFICATION: By signing this page I agree that the financial statements of the school have been properly audited as noted above pursuant to Article XXIV, and in the auditor's professional opinion, the Annual Financial Report (PDE-2057) submitted on the date referenced is materially consistent with the audited financial statements.

Chief School Administrator



Signature

11/27/18 Date

Board Secretary



Signature

11-27-18 Date

Jeffrey Ammerman

Contact Person

(610)466-2403

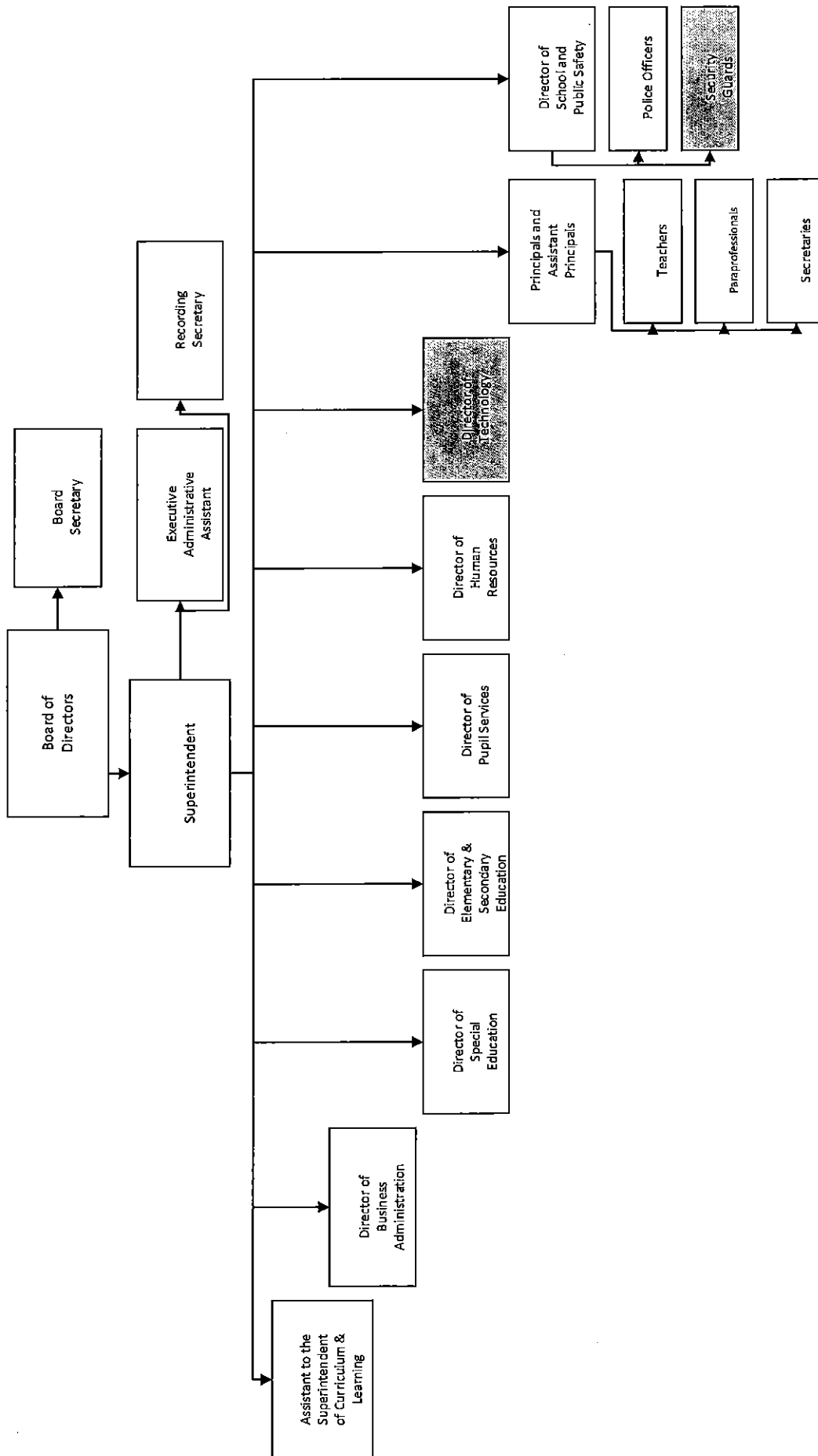
Ext :

Contact Person Telephone Number

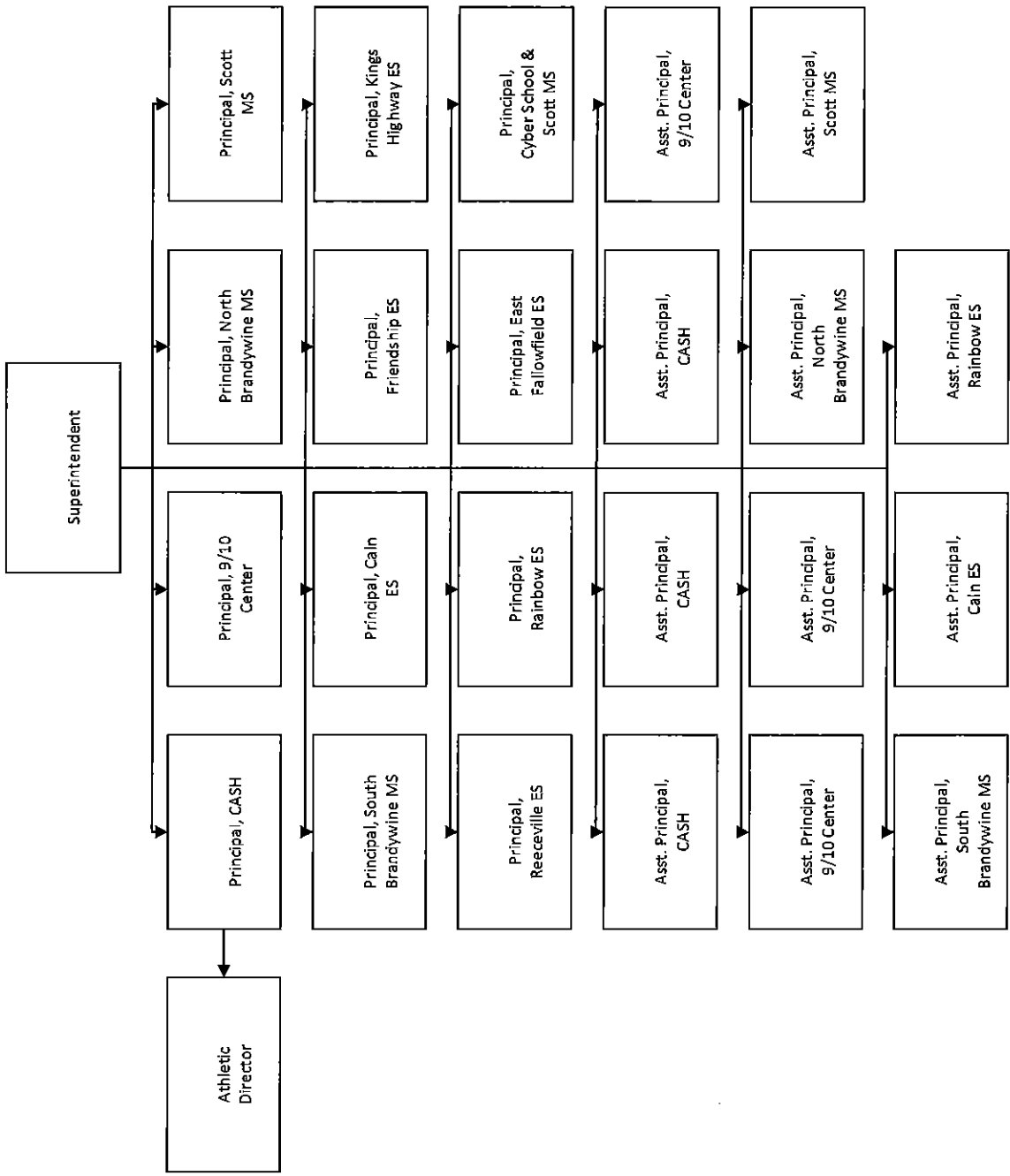
ammermanj@casdschools.org

Contact Person E-mail Address

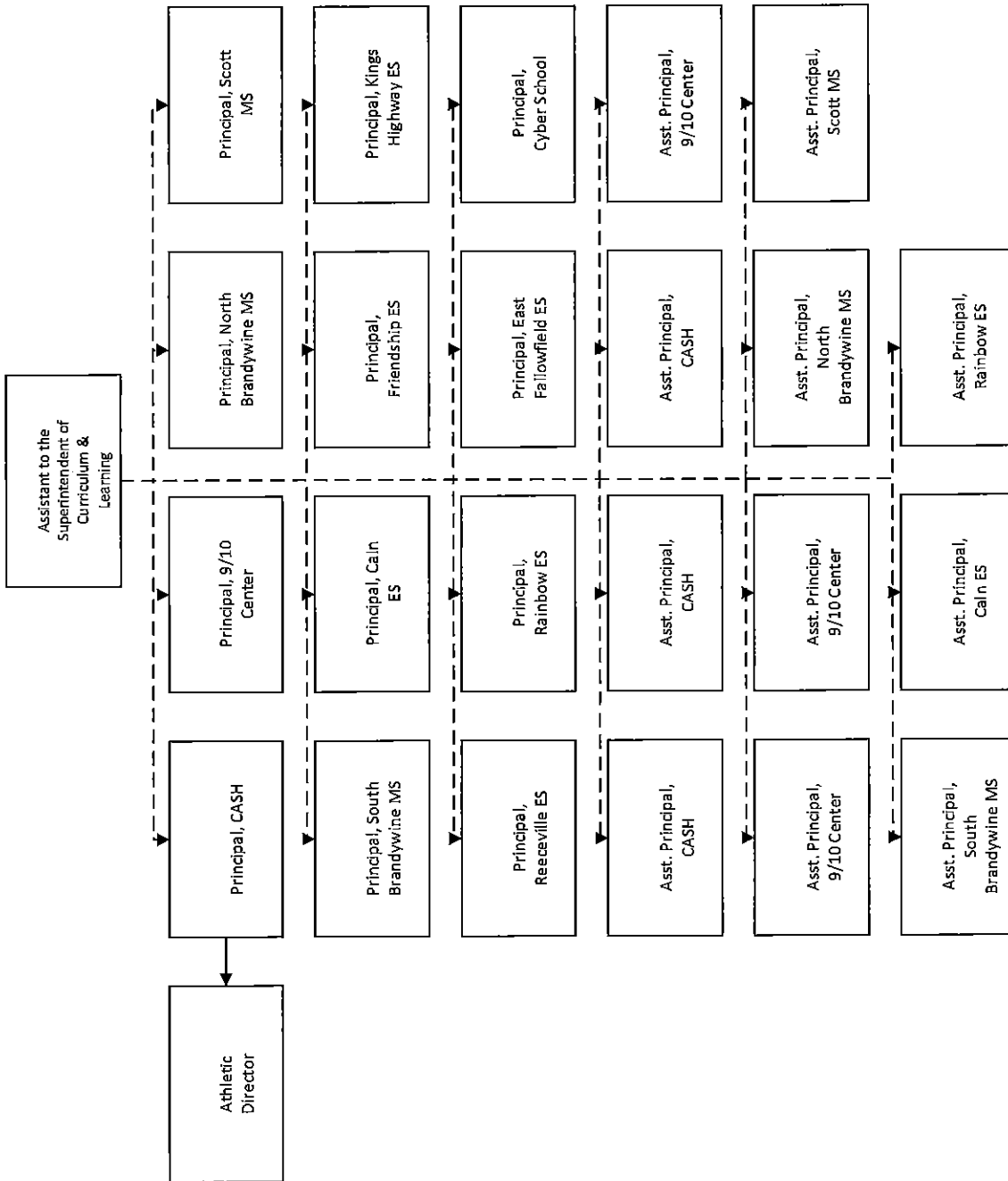
Contact Person Fax Number



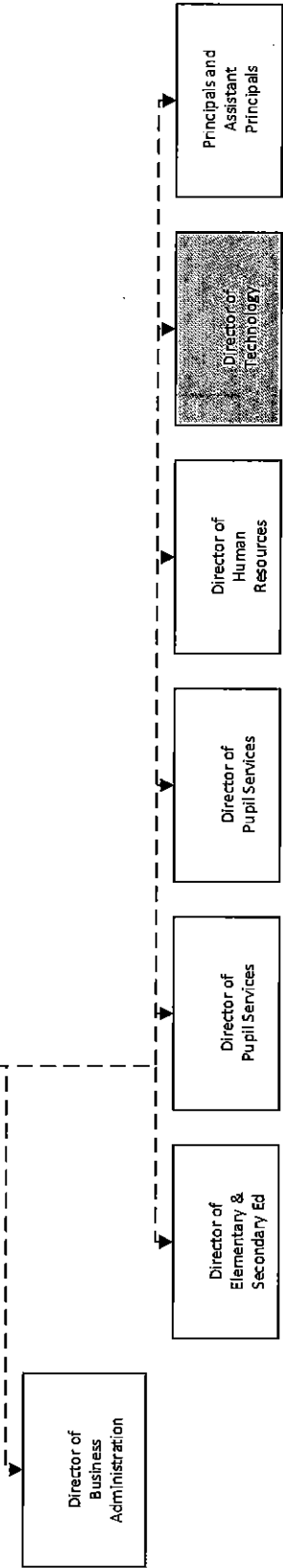
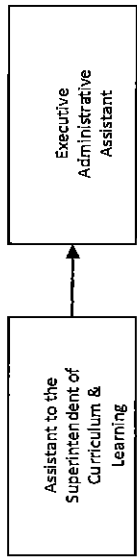
Outsourced Position



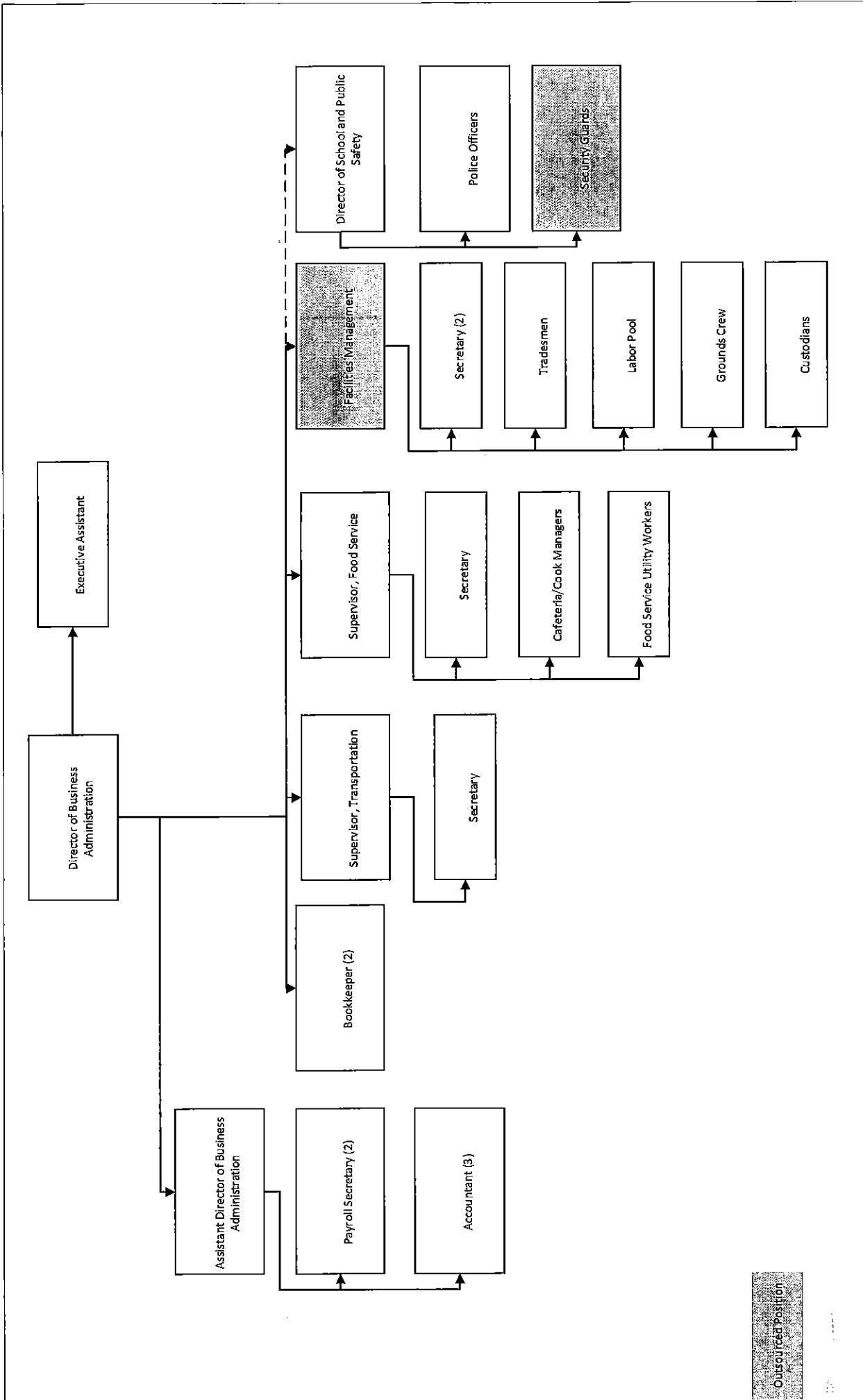
Outsourced Position



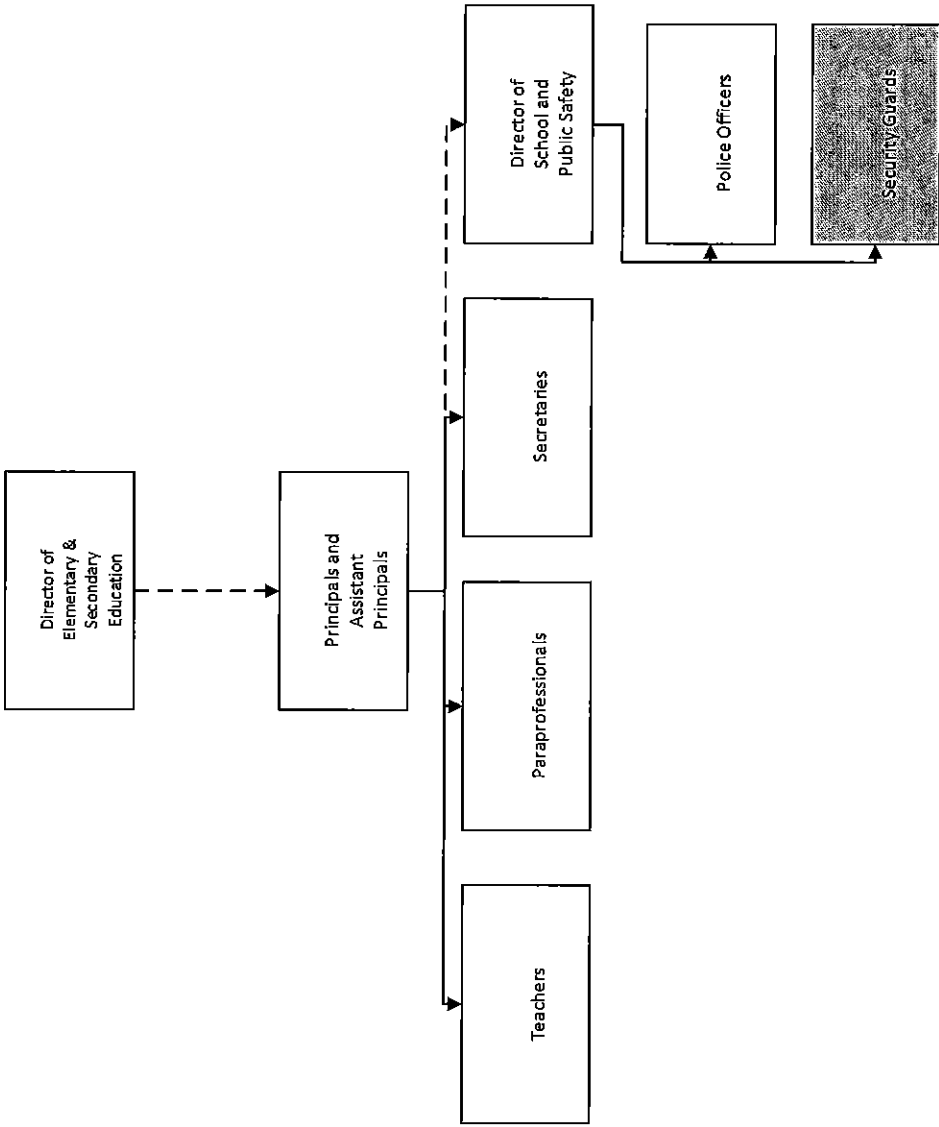
Unfilled Position



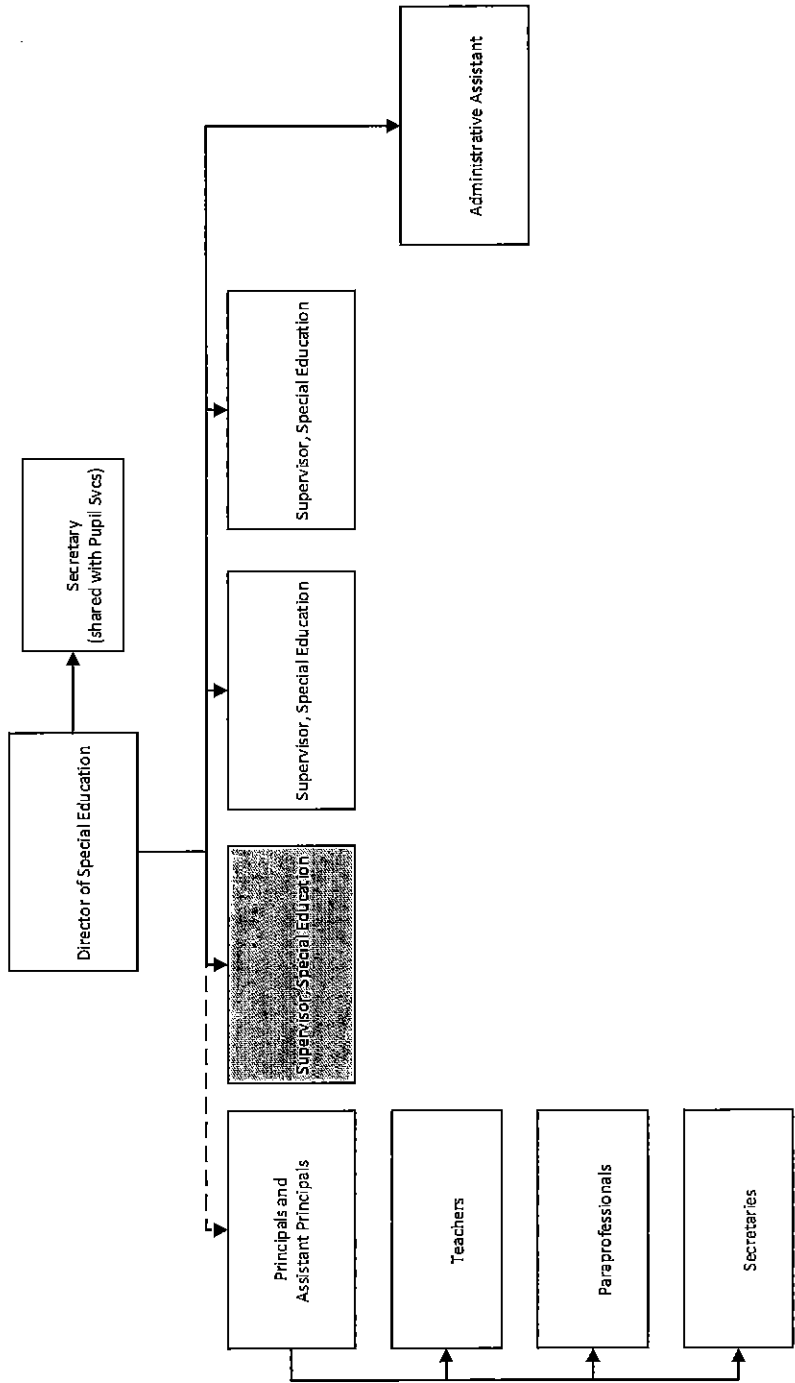
OUTSOURCED POSITION



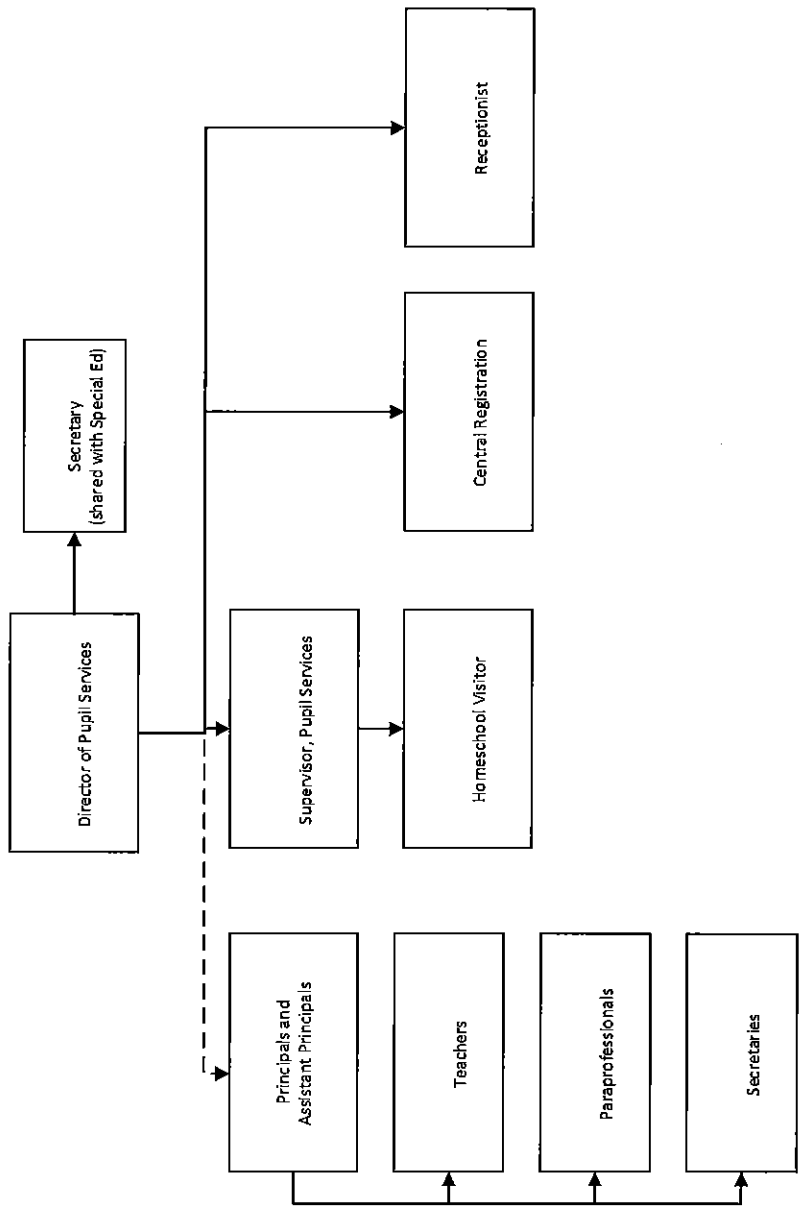
Outsourced Position

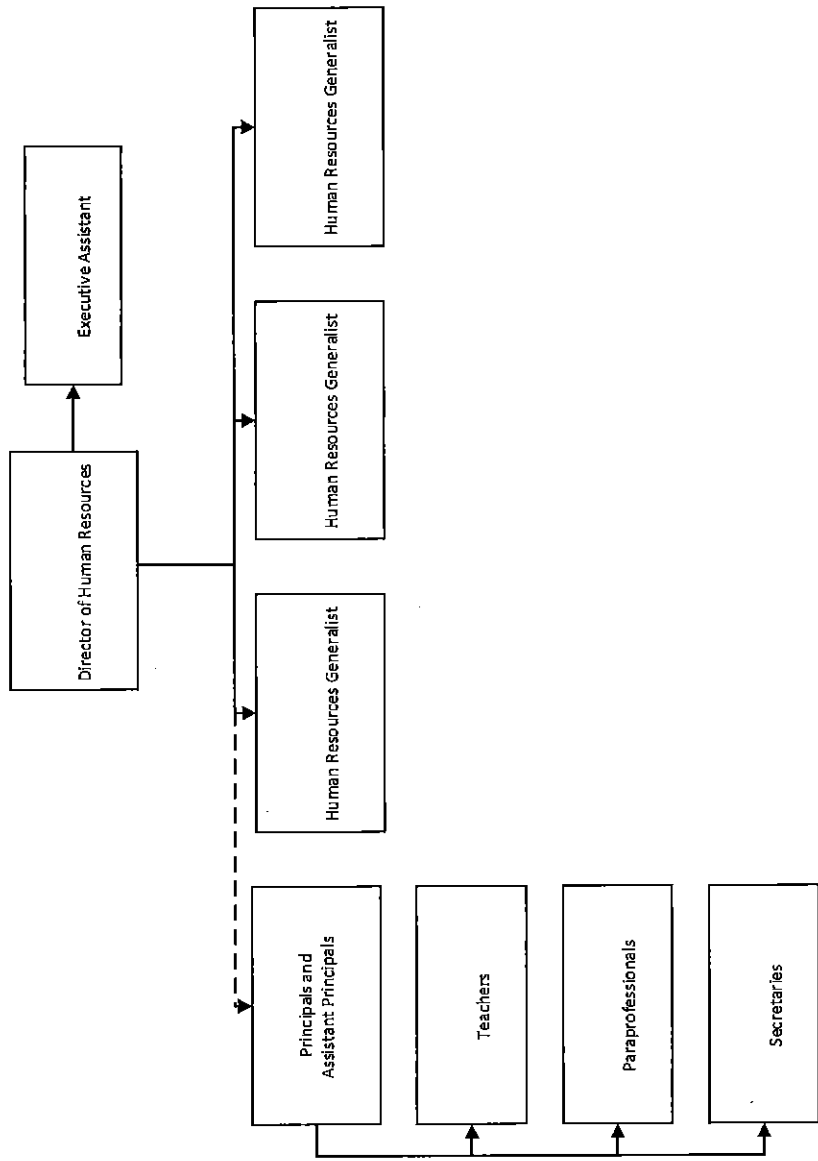


Outsourced position

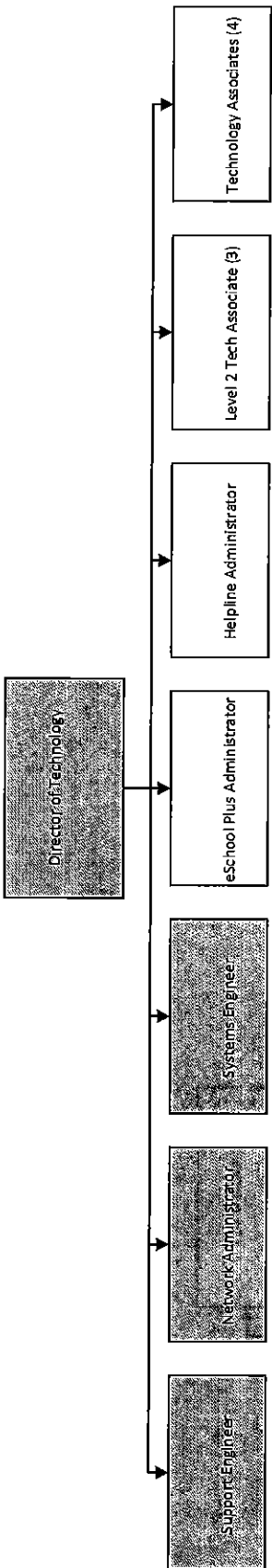


Outsourced Position





Outsourced Position



Outsourced Position

<u>Val Number</u>	<u>Description</u>	<u>Justification</u>
16015	<p>REP Fund 51: Object 300 is greater than object 500. Purchased services for food service contracted services should be coded to objects 571 and 572. Correct or enter a justification.</p> <p>REP Fund 51 Object 300: \$8,815.00 REP Fund 51 Object 500: \$1,467.00</p>	District sometimes hires temporary outsourced clerical help which should be coded to the 300 function.
16230	<p>REP Fund 51 – Net Position - Beginning of Fiscal Year must equal Prior Year AFR, Net Position - End of Year. Justifications to this error must fully explain the situation that prompted a fund balance restatement. "Auditor Adjustment" is not a sufficient justification.</p> <p>REP Fund 51 – Net Position - Beginning of Fiscal Year: \$-2,780,874.00 REP Fund 51, Prior Year AFR, Net Position - End of Year: \$-2,686,364.00</p>	Adjustment for OPEB and as a result of GASB 75 implementation were used to restate the prior years Net Position to have comparability in year over year statements
41050	<p>There is an entry in function 5110- 990 object "Other". Please explain what constitutes "Other".</p> <p>Expenditure 5110-990, Fund 10: \$301,920.00</p>	The District completed a sale/leaseback transaction of a District building. These are the costs related to that transaction.
50170	<p>SOIN: All Governmental Fund Authority Building Obligations must include an amount for Interest Paid during Fiscal Year. Correct data or enter a justification.</p>	Bonds were issued in June 2018. No payment was made in 17-18.
50410	<p>SESS - 2140 Psychological Services: SESS Schedule amounts for Special Education vary from prior year by 40% or more. Correct the data or enter a justification.</p> <p>SESS Schedule 2140: \$86,235.70 Prior Year SESS Schedule 2140: \$209,180.63</p>	A reduction in the number of total psychologists occurred. Additionally, some services that were previously purchased from service providers were provided by existing District employees.
50440	<p>SESS - 2260 Instruction and Curriculum Development Services: SESS Schedule amounts for Special Education vary from prior year by 40% or more. Correct the data or enter a justification.</p> <p>SESS Schedule 2260: \$366,471.72 Prior Year SESS Schedule 2260: \$167,334.17</p>	There were significantly more textbooks purchased in 17-18 than 16-17 which is the main source of the increase.

Amounts Expressed in Whole Dollars

	<u>General Fund</u> <u>(10)</u>	<u>Public Purpose Trust</u> <u>(27)</u>	<u>Other Compt Approved</u> <u>(28)</u>	<u>Athletic / Activity</u> <u>(29)</u>	<u>Capital Reserve (690.</u> <u>1850)</u> <u>(31)</u>
Assets And Deferred Outflows Of Resources					
Assets					
0100 Cash and Cash Equivalents	12,685,909				
0110 Investments	8,000,000				
0120 Taxes Receivable	5,894,116				
0130 Due From Other Funds	1,005				
0141 Due From Other Governments	2,298,651				
0142 State Revenue Receivable	4,149,650				
0143 Federal Revenue Receivable	2,343,798				
0145 Other Intergovernmental Revenue Receivable					
0146 Due from Primary Government					
0147 Due from Component Unit					
0150 Other Receivables	131,095				
0170 Inventories					
0180 Prepaid Expenses (Expenditures)	51,167				
0190 Other Current Assets	354,000				
Total Assets	\$35,909,391				
0910 Deferred Outflows of Resources					
Total Assets And Deferred Outflows Of Resources	\$35,909,391				

Amounts Expressed in Whole Dollars

	<u>Capital Reserve (1431)</u> <u>(32)</u>	<u>Other Capital Projects</u> <u>Fund</u> <u>(39)</u>	<u>Debt Service</u> <u>(40)</u>	<u>Permanent</u> <u>(90)</u>	<u>Total Governmental</u> <u>Funds</u>
Assets And Deferred Outflows Of Resources					
Assets					
0100 Cash and Cash Equivalents	944,062	5,383,898			19,013,869
0110 Investments					8,000,000
0120 Taxes Receivable					5,894,116
0130 Due From Other Funds					1,005
0141 Due From Other Governments					2,298,651
0142 State Revenue Receivable					4,149,650
0143 Federal Revenue Receivable					2,343,798
0145 Other Intergovernmental Revenue Receivable					
0146 Due from Primary Government					
0147 Due from Component Unit					
0150 Other Receivables					131,095
0170 Inventories					
0180 Prepaid Expenses (Expenditures)					51,167
0190 Other Current Assets					354,000
Total Assets	\$944,062	\$5,383,898			\$42,237,351
0910 Deferred Outflows of Resources					
Total Assets And Deferred Outflows Of Resources	\$944,062	\$5,383,898			\$42,237,351

Amounts Expressed in Whole Dollars	<u>General Fund</u> <u>(10)</u>	<u>Public Purpose Trust</u> <u>(27)</u>	<u>Other Compt Approved</u> <u>(28)</u>	<u>Athletic / Activity</u> <u>(29)</u>	<u>Capital Reserve (690.</u> <u>1850)</u> <u>(31)</u>
Liabilities And Deferred Inflows Of Resources And Fund Balances					
Liabilities					
0400 Due to Other Funds	18,386				
0411 Due to Other Governments					
0412 Due to Primary Government					
0413 Due to Component Unit					
0420 Accounts Payable	9,766,256				
0430 Contracts Payable					
0440 Current Portion of Long-Term Debt					
0450 Short-Term Payables					
0461 Accrued Salaries and Benefits	10,509,652				
0462 Payroll Deductions and Withholding					
0480 Unearned Revenues					
0490 Other Current Liabilities					
Total Liabilities	\$20,294,294				
0950 Deferred Inflows of Resources	4,361,008				
Fund Balances					
0810 Nonspendable Fund Balance	51,167				
0820 Restricted Fund Balance					
0830 Committed Fund Balance					
0840 Assigned Fund Balance					
0850 Unassigned Fund Balance	11,202,922				
Total Fund Balances	\$11,254,089				
Total Liabilities, Deferred Inflows Of Resources And Fund Balances	\$35,909,391				

Amounts Expressed in Whole Dollars	<u>Capital Reserve (1431)</u> <u>(32)</u>	<u>Other Capital Projects</u> <u>Fund</u> <u>(39)</u>	<u>Debt Service</u> <u>(40)</u>	<u>Permanent</u> <u>(90)</u>	<u>Total Governmental</u> <u>Funds</u>
Liabilities And Deferred Inflows Of Resources And Fund Balances					
Liabilities					
0400 Due to Other Funds					18,386
0411 Due to Other Governments					
0412 Due to Primary Government					
0413 Due to Component Unit					
0420 Accounts Payable		1,728			9,767,984
0430 Contracts Payable					
0440 Current Portion of Long-Term Debt					
0450 Short-Term Payables					
0461 Accrued Salaries and Benefits					10,509,652
0462 Payroll Deductions and Withholding					
0480 Unearned Revenues					
0490 Other Current Liabilities					
Total Liabilities		\$1,728			\$20,296,022
0950 Deferred Inflows of Resources					4,361,008
Fund Balances					
0810 Nonspendable Fund Balance					51,167
0820 Restricted Fund Balance	944,062	5,382,170			6,326,232
0830 Committed Fund Balance					
0840 Assigned Fund Balance					
0850 Unassigned Fund Balance					11,202,922
Total Fund Balances	\$944,062	\$5,382,170			\$17,580,321
Total Liabilities, Deferred Inflows Of Resources And Fund Balances	\$944,062	\$5,383,898			\$42,237,351

Amounts Expressed in Whole Dollars	<u>General Fund</u> <u>(10)</u>	<u>Public Purpose Trust</u> <u>(27)</u>	<u>Other Compt Approved</u> <u>(28)</u>	<u>Athletic / Activity</u> <u>(29)</u>	<u>Capital Reserve (690.</u> <u>1850)</u> <u>(31)</u>
Revenues					
6000 Revenue from Local Sources	111,346,380				
7000 Revenue from State Sources	51,929,587				
8000 Revenue from Federal Sources	4,117,451				
Total Revenues	\$167,393,418				
Expenditures					
1000 Instruction	116,070,793				
2000 Support Services	40,259,623				
3000 Operation of Non-Instructional Services	1,206,072				
4000 Facilities Acquisition, Construction and Improvement Services					
5110 Debt Service	14,719,780				
5130 Refund of Prior Year Revenues / Receipts					
Total Expenditures	\$172,256,268				
Excess (Deficiency) Of Revenues Over Expenditures	(\$4,862,850)				
Other Financing Sources (Uses)					
9110 Face Value of Bonds Issued	13,307,553				
9120 Proceeds from Refunding of Bonds					
9130 Bond Premiums					
9200 Proceeds from Extended-Term Financing					
9300 Interfund Transfers - IN					
9400 Sale of or Compensation for Loss of Fixed Assets					
9710 Transfers from Component Units					
9720 Transfers from Primary Governments					
9910 Other Financing Sources Not Listed in the 9000 Series					
9990 Insurance Recoveries					
5120 Debt Service – Refunded Bonds					
5150 Bond Discounts					
5200 Interfund Transfers – Out					
5300 Transfers Out to Component Units/Primary Governments					
Total Other Financing Sources (Uses)	\$13,307,553				

Amounts Expressed in Whole Dollars	<u>Capital Reserve (1431)</u> <u>(32)</u>	<u>Other Capital Projects</u> <u>Fund</u> <u>(39)</u>	<u>Debt Service</u> <u>(40)</u>	<u>Permanent</u> <u>(90)</u>	<u>Total Governmental</u> <u>Funds</u>
Revenues					
6000 Revenue from Local Sources	12,467	60,366			111,419,213
7000 Revenue from State Sources					51,929,587
8000 Revenue from Federal Sources					4,117,451
Total Revenues	\$12,467	\$60,366			\$167,466,251
Expenditures					
1000 Instruction					116,070,793
2000 Support Services	28,200				40,287,823
3000 Operation of Non-Instructional Services					1,206,072
4000 Facilities Acquisition, Construction and Improvement Services	133,359	55,468			188,827
5110 Debt Service					14,719,780
5130 Refund of Prior Year Revenues / Receipts					
Total Expenditures	\$161,559	\$55,468			\$172,473,295
Excess (Deficiency) Of Revenues Over Expenditures	(\$149,092)	\$4,898			(\$5,007,044)
Other Financing Sources (Uses)					
9110 Face Value of Bonds Issued					13,307,553
9120 Proceeds from Refunding of Bonds					
9130 Bond Premiums					
9200 Proceeds from Extended-Term Financing					
9300 Interfund Transfers - IN					
9400 Sale of or Compensation for Loss of Fixed Assets					
9710 Transfers from Component Units					
9720 Transfers from Primary Governments					
9910 Other Financing Sources Not Listed in the 9000 Series					
9990 Insurance Recoveries					
5120 Debt Service – Refunded Bonds					
5150 Bond Discounts					
5200 Interfund Transfers – Out					
5300 Transfers Out to Component Units/Primary Governments					
Total Other Financing Sources (Uses)					\$13,307,553

Amounts Expressed in Whole Dollars

<u>General Fund</u>	<u>Public Purpose Trust</u>	<u>Other Compt Approved</u>	<u>Athletic / Activity</u>	<u>Capital Reserve</u>
<u>(10)</u>	<u>(27)</u>	<u>(28)</u>	<u>(29)</u>	<u>(690,185)</u>
				<u>(31)</u>

- Special And Extraordinary Items**
- 9920 Special Items – Gains
- 9930 Extraordinary Items – Gains
- 5520 Special Items – Losses
- 5530 Extraordinary Items – Losses

Net Change In Fund Balances	\$8,444,703
------------------------------------	--------------------

Fund Balance	
0001 Fund Balance - Beginning of Fiscal Year	2,809,382
Fund Balance - End Of Year	\$11,254,085

Amounts Expressed in Whole Dollars	<u>Capital Reserve (1431)</u> <u>(32)</u>	<u>Other Capital Projects</u> <u>Fund</u> <u>(39)</u>	<u>Debt Service</u> <u>(40)</u>	<u>Permanent</u> <u>(90)</u>	<u>Total Governmental</u> <u>Funds</u>
Special And Extraordinary Items					
9920 Special Items – Gains					
9930 Extraordinary Items – Gains					
5520 Special Items – Losses					
5530 Extraordinary Items – Losses					
Net Change In Fund Balances	(\$149,092)	\$4,898			\$8,300,509
Fund Balance					
0001 Fund Balance - Beginning of Fiscal Year	1,093,154	5,377,273			9,279,809
Fund Balance - End Of Year	\$944,062	\$5,382,171			\$17,580,318

Amounts Expressed in Whole Dollars	<u>Food Service</u> <u>(51)</u>	<u>Child Care</u> <u>Operations</u> <u>(52)</u>	<u>Other Enterprise</u> <u>(58)</u>	<u>TOTAL</u>	<u>Internal Service</u> <u>(60)</u>
Assets And Deferred Outflows Of Resources					
Current Assets					
0100 Cash and Cash Equivalents	392,187			392,187	
0110 Investments					
0130 Due From Other Funds	17,381			17,381	
0141 Due From Other Governments	84,813			84,813	
0142 State Revenue Receivable					
0143 Federal Revenue Receivable					
0146 Due from Primary Government					
0147 Due from Component Unit					
0150 Other Receivables	27,902			27,902	
0170 Inventories	29,768			29,768	
0180 Prepaid Expenses (Expenditures)					
0190 Other Current Assets					
Total Current Assets	\$552,051			\$552,051	
Noncurrent Assets					
0211 Land					
0212 Site Improvements (Net)					
0220 Buildings and Building Improvements (Net)					
0230 Machinery, Equipment and Furniture (Net)					
0250 Construction in Progress					
0260 Long Term Prepayments					
0290 Other Noncurrent Assets					
Total Noncurrent Assets					
0910 Deferred Outflows of Resources	575,774			575,774	
Total Assets And Deferred Outflows Of Resources	\$1,127,825			\$1,127,825	

Amounts Expressed in Whole Dollars	<u>Food Service</u> <u>(51)</u>	<u>Child Care</u> <u>Operations</u> <u>(52)</u>	<u>Other Enterprise</u> <u>(58)</u>	<u>TOTAL</u>	<u>Internal Service</u> <u>(60)</u>
Liabilities And Deferred Inflows Of Resources And Net Position					
Current Liabilities					
0400 Due to Other Funds					
0411 Due to Other Governments					
0413 Due to Component Unit					
0420 Accounts Payable	2,682			2,682	
0430 Contracts Payable					
0440 Current Portion of Long-Term Debt					
0450 Short-Term Payables					
0461 Accrued Salaries and Benefits					
0462 Payroll Deductions and Withholding					
0480 Unearned Revenues					
0490 Other Current Liabilities					
Total Current Liabilities	\$2,682			\$2,682	
Noncurrent Liabilities					
0510 Bonds Payable					
0520 Extended-Term Financing Agreements Payable					
0530 Lease-Purchase Obligations					
0540 Accumulated Compensated Absences	29,489			29,489	
0550 Authority Lease Obligations					
0560 Other Post-Employment Benefits (OPEB)	242,409			242,409	
0570 Net Pension Liability	3,334,000			3,334,000	
0599 Other Noncurrent Liabilities					
Total Noncurrent Liabilities	\$3,605,898			\$3,605,898	
Total Liabilities	\$3,608,580			\$3,608,580	
0950 Deferred Inflows of Resources	171,000			171,000	
Net Position					
0791 Net Investment in Capital Assets					
0008 Restricted Net Position (0792 – 0798)					
0799 Unrestricted Net Position	(2,651,755)			(2,651,755)	
Total Net Position	(\$2,651,755)			(\$2,651,755)	
Total Liabilities And Deferred Inflows Of Resources And Net Position	\$1,127,825			\$1,127,825	

Amounts Expressed in Whole Dollars	<u>Food Service</u> <u>(51)</u>	<u>Child Care Operations</u> <u>(52)</u>	<u>Other Enterprise</u> <u>(58)</u>	<u>TOTAL</u>	<u>Internal Service</u> <u>(60)</u>
Operating Revenues					
6600 Food Service Revenue	441,603			441,603	
0071 Charges for Services					
0072 Other Operating Revenue	119,771			119,771	
Total Operating Revenues	\$561,374			\$561,374	
Operating Expenses					
100 Personnel Services – Salaries	891,157			891,157	
200 Personnel Services – Employee Benefits	682,944			682,944	
300 Purchased Professional and Technical Services	8,815			8,815	
400 Purchased Property Services	31,992			31,992	
500 Other Purchased Services	1,467			1,467	
600 Supplies	1,602,662			1,602,662	
740 Depreciation	22,045			22,045	
810 Dues and Fees	831			831	
890 Miscellaneous Expenditures					
Total Operating Expenses	\$3,241,913			\$3,241,913	
Operating Income (Loss)	(\$2,680,539)			(\$2,680,539)	
Non Operating Revenues (Expenses)					
6500 Earnings on Investments	15,618			15,618	
6920 Contributions and Donations from Private Sources					
6930 Gains or Losses on Sale of Fixed Assets					
6991 Refunds of a Prior Year Expenditure					
7000 Revenue from State Sources	298,633			298,633	
8000 Revenue from Federal Sources	2,495,407			2,495,407	
820 Claims and Judgments Against the LEA					
830 Interest					
TOTAL Non Operating Revenues (Expenses)	\$2,809,658			\$2,809,658	
Income (Loss) Before Contributions And Transfers	\$129,119			\$129,119	

Amounts Expressed in Whole Dollars	<u>Food Service</u> <u>(51)</u>	<u>Child Care Operations</u> <u>(52)</u>	<u>Other Enterprise</u> <u>(58)</u>	<u>TOTAL</u>	<u>Internal Service</u> <u>(60)</u>
Contributions, Transfers, and Special and Extraordinary Items					
5200 Interfund Transfers – Out					
5300 Transfers Out to Component Units/Primary Governments					
5520 Special Items – Losses					
5530 Extraordinary Items – Losses					
9300 Interfund Transfers - IN					
9500 Capital Contributions					
9700 Transfers IN From Component Units/Primary Governments					
9920 Special Items – Gains					
9930 Extraordinary Items – Gains					
Change In Net Position	\$129,119			\$129,119	
0002 Net Position - Beginning of Fiscal Year	(2,780,874)			(2,780,874)	
0003 Accounting Changes / Residual Equity Transfers					
Net Position - End Of Year	(\$2,651,755)			(\$2,651,755)	

Amounts Expressed in Whole Dollars	<u>Food Service</u> <u>(51)</u>	<u>Child Care Operations</u> <u>(52)</u>	<u>Other Enterprise</u> <u>(58)</u>	<u>TOTAL</u>	<u>Internal Service(60)</u>
Cash Flows From Operating Activities					
0011 Cash Receipts From Users	552,270			552,270	
0012 Cash Receipts From Assessments Made to Other Funds					
0013 Cash Receipts From Earnings on Investments	15,618			15,618	
0014 Cash Receipts From Other Operating Revenue					
0015 Cash Payments To Employees For Services	1,566,681			1,566,681	
0016 Cash Payments For Insurance Claims					
0017 Cash Payments To Suppliers For Goods and Services	2,800,837			2,800,837	
0018 Cash Payments For Other Operating Expenses					
Net Cash Provided By (Used For) Operating Activities	(\$3,799,630)			(\$3,799,630)	
Cash Flows From Non-Capital Financing Activities					
0021 Receipts From Local Sources - 6000					
0022 Receipts From State Sources - 7000	298,886			298,886	
0023 Receipts From Federal Sources -8000	2,523,480			2,523,480	
0024 Notes and Loans Received (Repaid)					
0025 Interest Paid on Notes/Loans - 5100-830					
0026 Operating Transfers In (Out)/Residual Equity Trans					
0027 Operating Transfers In (Out) Primary Government / Comp Unit					
0028 Receipts From Refund of Prior Year Expenditures - 6991					
0029 Special and Extraordinary Gains (losses)					
0030 Receipts from Insurance Recoveries -9990					
Net Cash Prov By (Used for) Non-Capital Financing Activities	\$2,822,366			\$2,822,366	
Cash Flows From Capital and Related Financing Activities					
0031 Payments For Fac Acq, Const, and Imp - 4000					
0032 Gain / (Loss) on Sale of Fixed Assets - 6930					
0033 Proceeds From Extended Term Financing - 9200					
0034 Principal Paid on Financing Agreements					
0035 Interest Paid on Financing Agreements - 5100-830					
0036 (Inc) Dec in Contributed Capital					
Net Cash Prov By (Used for) Capital and Related Financing Activities					
Cash Flows From Investing Activities					
0041 Earnings on Investments - 6500					
0042 Purchase of Inv Securities / Deposits to Inv Pools					
0043 Receipts From Investment Pool Withdrawals					
0044 Proceeds from Sale and Maturity of Inv Securities					

LEA : 124151902 Coatesville Area SD

Printed 12/14/2018 8:45:27 AM

0045 Loans Received (Paid)

Net Cash Prov By (Used for) Investing Activities

	<u>Food Service</u> <u>(51)</u>	<u>Child Care Operations</u> <u>(52)</u>	<u>Other Enterprise</u> <u>(58)</u>	<u>TOTAL</u>	<u>Internal Service</u> <u>(60)</u>
Net Increase (Decrease) in Cash Flows	(977,264)			(977,264)	
0004 Cash and Cash Equivalents Beginning of Year	1,369,451			1,369,451	
Cash and Cash Equivalents at Year End	\$392,187			\$392,187	

Reconciliation of Operating Income (Loss) To Net Cash Provided by (Used For) Operating Activities

0005 Operating Income (Loss) per REP	(2,680,539)			(2,680,539)	
Adjustments					
0051 Depreciation and Net Amortization	22,045			22,045	
0052 Provision for Uncollectible Accounts					
0053 Other Adjustments					
Effect of Changes in Assets, Liabilities, Deferred Outflows and Deferred Inflows					
0054 (Inc) Dec In Accounts Receivable (0120-0150)	(9,104)			(9,104)	
0055 Advances to Other Funds (0160)	(18,386)			(18,386)	
0056 (Inc) Dec in Inventories (0170)	6,941			6,941	
0057 (Inc) Dec in Prepaid Expenses (0180)					
0058 (Inc) Dec in Other Current or Noncurrent Assets					
0064 Deferred Outflows (0910)					
0059 Inc (Dec) in Accounts Payable (0400-0450)	(1,183,420)			(1,183,420)	
0060 Inc (Dec) in Accrued Salaries/Benefits (0461)					
0065 Inc (Dec) in Net Pension Liabilities (0570)	53,000			53,000	
0066 Inc (Dec) in Other Postemp Benefit Oblig (0560)	(163,763)			(163,763)	
0061 Inc (Dec) in Payroll Deductions/Withholding (0462)					
0062 Inc (Dec) in Unearned Revenue (0480)					
0063 Inc (Dec) in Other Current or Noncurrent Liabilities					
0067 Deferred Inflows (0950)					
Total Adjustments	(\$1,292,687)			(\$1,292,687)	
Cash Provided By (Used for) Total	(\$3,973,226)			(\$3,973,226)	

COMBINED STATEMENT OF CASH FLOWS
SCHEDULE OF NONCASH INVESTING, CAPITAL, AND FINANCING ACTIVITIES

Explanation of Transaction and Balance Sheet Effect	Amount
Total	

LEA : 124151902 Coatesville Area SD

Printed 12/14/2018 8:45:28 AM

Amounts Expressed in Whole Dollars

	<u>Private Purpose Trust</u> (71)	<u>Investment Trust</u> (72)	<u>Pension Trust</u> (73)	<u>Activity</u> (81)
Assets And Deferred Outflows Of Resources				
Assets				
0100 Cash and Cash Equivalents	210,402			151,331
0110 Investments				
0130 Due From Other Funds				
0147 Due from Component Unit				
0150 Other Receivables				
0170 Inventories				
0180 Prepaid Expenses (Expenditures)				
0190 Other Current Assets				
0220 Buildings and Building Improvements (Net)				
0230 Machinery, Equipment and Furniture (Net)				
Total Assets	\$210,402			\$151,331
0910 Deferred Outflows of Resources				
Total Assets And Deferred Outflows Of Resources	\$210,402			\$151,331

LEA : 124151902 Coatesville Area SD

Printed 12/14/2018 8:45:28 AM

Amounts Expressed in Whole Dollars

	<u>Other Agency</u> <u>(89)</u>	<u>Discrete Component Units</u> <u>(98)</u>	<u>Discrete Component Units</u> <u>(99)</u>	<u>Total Fiduciary Funds</u>
Assets And Deferred Outflows Of Resources				
Assets				
0100 Cash and Cash Equivalents		141,385		503,118
0110 Investments				
0130 Due From Other Funds				
0147 Due from Component Unit				
0150 Other Receivables				
0170 Inventories				
0180 Prepaid Expenses (Expenditures)				
0190 Other Current Assets				
0220 Buildings and Building Improvements (Net)				
0230 Machinery, Equipment and Furniture (Net)				
Total Assets		\$141,385		\$503,118
0910 Deferred Outflows of Resources				
Total Assets And Deferred Outflows Of Resources		\$141,385		\$503,118

LEA : 124151902 Coatesville Area SD

Printed 12/14/2018 8:45:28 AM

Amounts Expressed in Whole Dollars	<u>Private Purpose Trust</u> (71)	<u>Investment Trust</u> (72)	<u>Pension Trust</u> (73)	<u>Activity</u> (81)
Liabilities, Deferred Inflows Of Resources And Net Position				
Liabilities				
0400 Due to Other Funds				
0411 Due to Other Governments				
0412 Due to Primary Government				
0413 Due to Component Unit				
0420 Accounts Payable	1,035			151,331
0430 Contracts Payable				
0450 Short-Term Payables				
0461 Accrued Salaries and Benefits				
0462 Payroll Deductions and Withholding				
0480 Unearned Revenues				
0490 Other Current Liabilities				
Total Liabilities	\$1,035			\$151,331
0950 Deferred Inflows of Resources				
Net Position				
0791 Net Investment in Capital Assets				
0009 Restricted Net Position (0792 – 0798)				
0799 Unrestricted Net Position	209,367			
Total Net Position	\$209,367			
Total Liabilities, Deferred Inflows Of Resources And Net Position	\$210,402			\$151,331

LEA : 124151902 Coatesville Area SD

Printed 12/14/2018 8:45:28 AM

Amounts Expressed in Whole Dollars	<u>Other Agency</u> (89)	<u>Discrete Component Units</u> (98)	<u>Discrete Component Units</u> (99)	<u>Total Fiduciary Funds</u>
Liabilities, Deferred Inflows Of Resources And Net Position				
Liabilities				
0400 Due to Other Funds				
0411 Due to Other Governments				
0412 Due to Primary Government				
0413 Due to Component Unit				
0420 Accounts Payable	141,385			293,751
0430 Contracts Payable				
0450 Short-Term Payables				
0461 Accrued Salaries and Benefits				
0462 Payroll Deductions and Withholding				
0480 Unearned Revenues				
0490 Other Current Liabilities				
Total Liabilities	\$141,385			\$293,751
0950 Deferred Inflows of Resources				
Net Position				
0791 Net Investment in Capital Assets				
0009 Restricted Net Position (0792 – 0798)				
0799 Unrestricted Net Position				209,367
Total Net Position				\$209,367
Total Liabilities, Deferred Inflows Of Resources And Net Position	\$141,385			\$503,118

Amounts Expressed in Whole Dollars	<u>Private Purpose Trust</u> (71)	<u>Investment Trust</u> (72)	<u>Pension Trust</u> (73)	<u>Discrete Component</u> <u>Units</u> (98)	<u>Discrete Component</u> <u>Units</u> (99)	<u>Total Fiduciary</u> <u>Funds</u>
Additions						
0091 Gifts and Contributions	110,265					110,265
0092 Other Additions	19,100					19,100
Deductions						
0093 Scholarships Awarded	47,200					47,200
0094 Other Deductions						
Change In Net Position	\$82,165					\$82,165
0006 Net Position – Beginning of Fiscal Year	127,202					127,202
0007 Net Position Held in Trust for Pension Benefits						
Net Position - End of Fiscal Year	\$209,367					\$209,367

	<u>Revenue Reported In Current Year</u>	<u>Current Year Tax Accrual</u>	<u>Prior Year Tax Accrual</u>	<u>Taxes Collected In Current Year</u>
<u>Revenue from Local Sources</u>				
6111 Current Real Estate Taxes	93,494,619.93			93,494,619.93
6112 Interim Real Estate Taxes	231,202.39			231,202.39
6113 Public Utility Realty Taxes	103,990.81			103,990.81
6143 Current Act 511 Local Services Taxes	81,141.51			81,141.51
6151 Current Act 511 Earned Income Taxes	8,353,642.08	1,605,126.00	1,526,574.00	8,275,090.08
6153 Current Act 511 Real Estate Transfer Taxes	1,818,212.71	177,632.00	173,771.00	1,814,351.71
6411 Delinquent Real Estate Taxes	4,566,515.14	750,441.00	776,853.00	4,592,927.14
6500 Earnings on Investments	501,194.43			
6700 Revenues from LEA Activities	73,596.00			
6832 Federal IDEA Revenue Received as Pass Through	1,222,851.00			
6910 Rentals	248,323.23			
6920 Contributions and Donations from Private Sources	21,799.99			
6944 Receipts from Other LEAs in Pennsylvania - Education	266,049.69			
6991 Refunds of a Prior Year Expenditure	219,406.54			
6992 Energy Efficiency Revenues and Incentives	42,063.36			
6999 Other Revenues Not Specified Above	101,771.44			
TOTAL Revenue from Local Sources	\$111,346,380.25	\$2,533,199.00	\$2,477,198.00	\$108,593,323.57

**Revenue Reported
In Current Year**

Revenue from State Sources

7110 Basic Education Funding	25,144,522.96		
7160 Tuition for Orphans Subsidy	120,591.19		
7271 Special Education funds for School-Aged Pupils	5,052,279.86		
7299 Program Revenues Not Listed Previously in the 7200 Series	147.30		
7311 Pupil Transportation Subsidy	5,532,079.27		
7312 Nonpublic and Charter School Pupil Transportation Subsidy	1,239,315.00		
7320 Rental and Sinking Fund Payments / Building Reimbursement Subsidy	228,714.64		
7330 Health Services (Medical, Dental, Nurse, Act 25)	120,011.16		
7340 State Property Tax Reduction Allocation	3,924,693.23		
7505 Ready to Learn Block Grant	1,103,925.00		
7599 Other State Revenue Not Listed Elsewhere in the 7000 Series	6,100.00		
7810 State Share of Social Security and Medicare Taxes	2,140,101.50		
7820 State Share of Retirement Contributions	7,317,106.27		
TOTAL Revenue from State Sources	\$51,929,587.38		

**Revenue Reported
In Current Year**

Revenue from Federal Sources

8190 Other Unrestricted Federal Grants-in-Aid Direct from the Federal Government	2,195.89		
8514 NCLB, Title I - Improving the Academic Achievement of the Disadvantaged	1,972,009.91		
8515 NCLB, Title II - Preparing, Training and Recruiting High Quality Teachers and Principals	352,615.80		
8516 NCLB, Title III - Language Instruction for Limited English Proficient and Immigrant Students	103,237.19		
8517 NCLB, Title IV - 21St Century Schools	18,609.15		
8690 Other Restricted Federal Grants-in-Aid Through the Commonwealth of PA	12,656.49		
8810 School-Based Access Medicaid Reimbursement Program (SBAP) Reimbursements (Access)	1,633,424.08		
8820 Medical Assistance Reimbursement for Administrative Claiming (Quarterly) Program	22,702.04		
TOTAL Revenue from Federal Sources	\$4,117,450.55		

Revenue Reported
In Current Year

Other Financing Sources

9110 Face Value of Bonds Issued	13,307,552.97			
TOTAL Other Financing Sources	\$13,307,552.97			
TOTAL FROM ALL SOURCES	\$180,700,971.15	\$2,533,199.00	\$2,477,198.00	\$108,593,323.57

Revenue from Local Sources	111,346,380.25
Revenue from State Sources	51,929,587.38
Revenue from Federal Sources	4,117,450.55
Other Financing Sources	13,307,552.97
TOTAL FROM ALL SOURCES	\$180,700,971.15

General Fund (10)

	<u>Total</u>
1000 Instruction	
100 Personnel Services – Salaries	
100 Personnel Services – Salaries	32,202,429.26
Total Personnel Services – Salaries	\$32,202,429.26
200 Personnel Services – Employee Benefits	
210 Group Insurance – Contracted Provider	92,867.55
220 Social Security Contributions	2,415,916.60
230 PSERS Retirement Contributions	10,452,263.98
250 Unemployment Compensation	21,117.36
260 Workers' Compensation	362,572.88
270 Group Insurance – Self-Insurance	9,078,277.00
Total Personnel Services – Employee Benefits	\$22,423,015.37
300 Purchased Professional and Technical Services	
322 Professional Educational Services – Ius	12,633,764.48
324 Professional Educational Services – Employee Training and Development Services	48,350.00
329 Professional Educational Services – Other	3,401,425.39
330 Other Professional Services	546,416.63
Total Purchased Professional and Technical Services	\$16,629,956.50
400 Purchased Property Services	
430 Repairs and Maintenance Services	3,110.94
440 Rentals	162,552.61
Total Purchased Property Services	\$165,663.55
500 Other Purchased Services	
510 Student Transportation Services	420,849.43
550 Printing and Binding	1,716.83
561 Tuition To Other School Districts Within the State	144,858.22
562 Tuition To Pennsylvania Charter Schools	36,456,734.88
563 Tuition To Nonpublic Schools	3,041.00
564 Tuition To Career and Technology Centers	2,921,008.00
566 Tuition To Institutions of Higher Education and Technical Institutes	197,500.00
567 Tuition To Approved Private Schools (APS) and PA Chartered Schools for the Deaf and Blind	3,545,191.96
568 Tuition To Private Residential Rehabilitative Institutions (PRRI) [In-State] and Detention Centers	147,595.85
580 Travel	191.22
Total Other Purchased Services	\$43,838,687.39
600 Supplies	
610 General Supplies	657,812.38
640 Books and Periodicals	134,507.45
650 Supplies & Fees – Technology Related	11,744.03
Total Supplies	\$804,063.86
700 Property	
756 Capitalized Technology Hardware and Equipment– Original	4,485.00
762 Capitalized Equipment - Replacement	1,473.33
Total Property	\$5,958.33

LEA : 124151902 Coatesville Area SD

Printed 12/14/2018 8:45:32 AM

General Fund (10)

1000 Instruction

Total

800 Other Objects

810 Dues and Fees

18.57

890 Miscellaneous Expenditures

1,000.00

Total Other Objects

\$1,018.57

Total 1000 Instruction

\$116,070,792.83

General Fund (10)

1100 Regular Programs – Elementary / Secondary

	<u>Elementary</u>	<u>Secondary</u>	<u>Federal</u>	<u>Total</u>
100 Personnel Services – Salaries				
100 Personnel Services – Salaries	13,318,321.69	11,960,342.84	985,244.33	26,263,908.86
Total Personnel Services – Salaries	\$13,318,321.69	\$11,960,342.84	\$985,244.33	\$26,263,908.86
200 Personnel Services – Employee Benefits				
210 Group Insurance – Contracted Provider	37,675.06	34,536.00	3,079.90	75,290.96
220 Social Security Contributions	998,415.03	897,405.93	74,469.57	1,970,290.53
230 PSERS Retirement Contributions	4,320,353.80	3,891,392.61	319,874.04	8,531,620.45
250 Unemployment Compensation	8,317.23	6,984.13	492.52	15,793.88
260 Workers' Compensation	149,564.21	134,546.76	11,120.49	295,231.46
270 Group Insurance – Self-Insurance	3,725,298.35	3,397,589.87	210,925.50	7,333,813.72
Total Personnel Services – Employee Benefits	\$9,239,623.68	\$8,362,455.30	\$619,962.02	\$18,222,041.00
300 Purchased Professional and Technical Services				
322 Professional Educational Services – lus	503.26	55,416.82		55,920.08
324 Professional Educational Services – Employee Training and Development Services		4,533.20		4,533.20
329 Professional Educational Services – Other	515,658.42	381,600.51	13,467.57	910,726.50
330 Other Professional Services	13,532.58	11,771.42	45,533.78	70,837.78
Total Purchased Professional and Technical Services	\$529,694.26	\$453,321.95	\$59,001.35	\$1,042,017.56
400 Purchased Property Services				
430 Repairs and Maintenance Services	708.95	694.04		1,402.99
440 Rentals	80,806.28	81,746.33		162,552.61
Total Purchased Property Services	\$81,515.23	\$82,440.37		\$163,955.60
500 Other Purchased Services				
510 Student Transportation Services	6,971.40	9,835.44		16,806.84
550 Printing and Binding	931.82	785.01		1,716.83
561 Tuition To Other School Districts Within the State	27,636.96	24,040.22		51,677.18
562 Tuition To Pennsylvania Charter Schools	11,528,824.90	10,028,439.31		21,557,264.21
566 Tuition To Institutions of Higher Education and Technical Institutes		197,500.00		197,500.00
568 Tuition To Private Residential Rehabilitative Institutions (PRRI) [In-State] and Detention Centers	70,719.73	61,516.12		132,235.85
Total Other Purchased Services	\$11,635,084.81	\$10,322,116.10		\$21,957,200.91
600 Supplies				
610 General Supplies	181,863.63	208,772.69	245,484.09	636,120.41
640 Books and Periodicals	75,181.36	58,491.51		133,672.87
650 Supplies & Fees – Technology Related	108.00	4,000.00		4,108.00
Total Supplies	\$257,152.99	\$271,264.20	\$245,484.09	\$773,901.28
700 Property				
756 Capitalized Technology Hardware and Equipment – Original			4,485.00	4,485.00
762 Capitalized Equipment - Replacement		1,473.33		1,473.33
Total Property		\$1,473.33	\$4,485.00	\$5,958.33
800 Other Objects				
890 Miscellaneous Expenditures	333.40	666.60		1,000.00
Total Other Objects	\$333.40	\$666.60		\$1,000.00
Total 1100 Regular Programs – Elementary / Secondary	\$35,061,726.06	\$31,454,080.69	\$1,914,176.79	\$68,429,983.54

General Fund (10)

1110 Regular Programs

	<u>Elementary</u>	<u>Secondary</u>	<u>Federal</u>	<u>Total</u>
100 Personnel Services – Salaries				
100 Personnel Services – Salaries	13,318,321.69	11,960,342.84		25,278,664.53
Total Personnel Services – Salaries	\$13,318,321.69	\$11,960,342.84		\$25,278,664.53
200 Personnel Services – Employee Benefits				
210 Group Insurance – Contracted Provider	37,675.06	34,536.00		72,211.06
220 Social Security Contributions	998,415.03	897,405.93		1,895,820.96
230 PSERS Retirement Contributions	4,320,353.80	3,891,392.61		8,211,746.41
250 Unemployment Compensation	8,317.23	6,984.13		15,301.36
260 Workers' Compensation	149,564.21	134,546.76		284,110.97
270 Group Insurance – Self-Insurance	3,725,298.35	3,397,589.87		7,122,888.22
Total Personnel Services – Employee Benefits	\$9,239,623.68	\$8,362,455.30		\$17,602,078.98
300 Purchased Professional and Technical Services				
322 Professional Educational Services – Ius	503.26	55,416.82		55,920.08
324 Professional Educational Services – Employee Training and Development Services		4,533.20		4,533.20
329 Professional Educational Services – Other	515,658.42	381,600.51		897,258.93
330 Other Professional Services	13,532.58	11,771.42		25,304.00
Total Purchased Professional and Technical Services	\$529,694.26	\$453,321.95		\$983,016.21
400 Purchased Property Services				
430 Repairs and Maintenance Services	708.95	694.04		1,402.99
440 Rentals	80,806.28	81,746.33		162,552.61
Total Purchased Property Services	\$81,515.23	\$82,440.37		\$163,955.60
500 Other Purchased Services				
510 Student Transportation Services	6,971.40	9,835.44		16,806.84
550 Printing and Binding	931.82	785.01		1,716.83
561 Tuition To Other School Districts Within the State	27,636.96	24,040.22		51,677.18
562 Tuition To Pennsylvania Charter Schools	11,528,824.90	10,028,439.31		21,557,264.21
566 Tuition To Institutions of Higher Education and Technical Institutes		197,500.00		197,500.00
568 Tuition To Private Residential Rehabilitative Institutions (PRRI) [In-State] and Detention Centers	70,719.73	61,516.12		132,235.85
Total Other Purchased Services	\$11,635,084.81	\$10,322,116.10		\$21,957,200.91
600 Supplies				
610 General Supplies	181,863.63	208,772.69		390,636.32
640 Books and Periodicals	75,181.36	58,491.51		133,672.87
650 Supplies & Fees – Technology Related	108.00	4,000.00		4,108.00
Total Supplies	\$257,152.99	\$271,264.20		\$528,417.19
700 Property				
762 Capitalized Equipment - Replacement		1,473.33		1,473.33
Total Property		\$1,473.33		\$1,473.33
800 Other Objects				
890 Miscellaneous Expenditures	333.40	666.60		1,000.00
Total Other Objects	\$333.40	\$666.60		\$1,000.00
Total 1110 Regular Programs	\$35,061,726.06	\$31,454,080.69		\$66,515,806.75

General Fund (10)

1190 Federally-Funded Regular Programs

	<u>Elementary</u>	<u>Secondary</u>	<u>Federal</u>	<u>Total</u>
100 Personnel Services – Salaries				
100 Personnel Services – Salaries			985,244.33	985,244.33
Total Personnel Services – Salaries			\$985,244.33	\$985,244.33
200 Personnel Services – Employee Benefits				
210 Group Insurance – Contracted Provider			3,079.90	3,079.90
220 Social Security Contributions			74,469.57	74,469.57
230 PSERS Retirement Contributions			319,874.04	319,874.04
250 Unemployment Compensation			492.52	492.52
260 Workers' Compensation			11,120.49	11,120.49
270 Group Insurance – Self-Insurance			210,925.50	210,925.50
Total Personnel Services – Employee Benefits			\$619,962.02	\$619,962.02
300 Purchased Professional and Technical Services				
329 Professional Educational Services – Other			13,467.57	13,467.57
330 Other Professional Services			45,533.78	45,533.78
Total Purchased Professional and Technical Services			\$59,001.35	\$59,001.35
600 Supplies				
610 General Supplies			245,484.09	245,484.09
Total Supplies			\$245,484.09	\$245,484.09
700 Property				
756 Capitalized Technology Hardware and Equipment – Original			4,485.00	4,485.00
Total Property			\$4,485.00	\$4,485.00
Total 1190 Federally-Funded Regular Programs			\$1,914,176.79	\$1,914,176.79

General Fund (10)

1200 Special Programs – Elementary / Secondary

	<u>Elementary</u>	<u>Secondary</u>	<u>Federal</u>	<u>Total</u>
100 Personnel Services – Salaries				
100 Personnel Services – Salaries	2,870,093.67	2,120,775.13	164,070.44	5,154,939.24
Total Personnel Services – Salaries	\$2,870,093.67	\$2,120,775.13	\$164,070.44	\$5,154,939.24
200 Personnel Services – Employee Benefits				
210 Group Insurance – Contracted Provider	8,238.53	6,312.71	531.79	15,083.03
220 Social Security Contributions	215,142.11	159,053.86	12,280.87	386,476.84
230 PSERS Retirement Contributions	924,176.35	689,323.75	53,437.60	1,666,937.70
250 Unemployment Compensation	2,821.15	1,933.10	148.90	4,903.15
260 Workers' Compensation	32,441.43	24,038.29	1,842.97	58,322.69
270 Group Insurance – Self-Insurance	848,663.94	659,842.70	35,398.20	1,543,904.84
Total Personnel Services – Employee Benefits	\$2,031,483.51	\$1,540,504.41	\$103,640.33	\$3,675,628.25
300 Purchased Professional and Technical Services				
322 Professional Educational Services – Ius	6,001,653.90	5,221,978.58	1,222,851.00	12,446,483.48
324 Professional Educational Services – Employee Training and Development Services			949.80	949.80
329 Professional Educational Services – Other	1,332,025.77	1,158,673.12		2,490,698.89
330 Other Professional Services	254,339.56	221,239.29		475,578.85
Total Purchased Professional and Technical Services	\$7,588,019.23	\$6,601,890.99	\$1,223,800.80	\$15,413,711.02
500 Other Purchased Services				
510 Student Transportation Services	216,081.98	187,960.61		404,042.59
561 Tuition To Other School Districts Within the State	22,316.87	19,412.50		41,729.37
562 Tuition To Pennsylvania Charter Schools	7,968,236.91	6,931,233.76		14,899,470.67
563 Tuition To Nonpublic Schools	1,626.33	1,414.67		3,041.00
567 Tuition To Approved Private Schools (APS) and PA Chartered Schools for the Deaf and Blind	1,895,968.66	1,649,223.30		3,545,191.96
568 Tuition To Private Residential Rehabilitative Institutions (PRRI) [In-State] and Detention Centers	8,214.53	7,145.47		15,360.00
580 Travel	102.26	88.96		191.22
Total Other Purchased Services	\$10,112,547.54	\$8,796,479.27		\$18,909,026.81
600 Supplies				
610 General Supplies	4,108.62	2,902.49		7,011.11
640 Books and Periodicals	221.72	192.86		414.58
650 Supplies & Fees – Technology Related	4,083.75	3,552.28		7,636.03
Total Supplies	\$8,414.09	\$6,647.63		\$15,061.72
800 Other Objects				
810 Dues and Fees		18.57		18.57
Total Other Objects		\$18.57		\$18.57
Total 1200 Special Programs – Elementary / Secondary	\$22,610,558.04	\$19,066,316.00	\$1,491,511.57	\$43,168,385.61

LEA : 124151902 Coatesville Area SD

Printed 12/14/2018 8:45:32 AM

General Fund (10)

1210 Life Skills Support

	<u>Elementary</u>	<u>Secondary</u>	<u>Federal</u>	<u>Total</u>
100 Personnel Services – Salaries				
100 Personnel Services – Salaries	95,676.62	151,071.36		246,747.98
Total Personnel Services – Salaries	\$95,676.62	\$151,071.36		\$246,747.98
200 Personnel Services – Employee Benefits				
210 Group Insurance – Contracted Provider	289.37	490.42		779.79
220 Social Security Contributions	7,246.17	11,515.64		18,761.81
230 PSERS Retirement Contributions	29,438.13	48,796.71		78,234.84
250 Unemployment Compensation	49.63	66.28		115.91
260 Workers' Compensation	1,099.63	1,731.04		2,830.67
270 Group Insurance – Self-Insurance	31,033.62	21,377.32		52,410.94
Total Personnel Services – Employee Benefits	\$69,156.55	\$83,977.41		\$153,133.96
Total 1210 Life Skills Support	\$164,833.17	\$235,048.77		\$399,881.94

General Fund (10)

	<u>Elementary</u>	<u>Secondary</u>	<u>Federal</u>	<u>Total</u>
1220 Sensory Support				
100 Personnel Services – Salaries				
100 Personnel Services – Salaries	108,084.00			108,084.00
Total Personnel Services – Salaries	\$108,084.00			\$108,084.00
200 Personnel Services – Employee Benefits				
210 Group Insurance – Contracted Provider	284.32			284.32
220 Social Security Contributions	8,227.88			8,227.88
230 PSERS Retirement Contributions	32,005.24			32,005.24
250 Unemployment Compensation	37.23			37.23
260 Workers' Compensation	1,187.12			1,187.12
270 Group Insurance – Self-Insurance	19,662.72			19,662.72
Total Personnel Services – Employee Benefits	\$61,404.51			\$61,404.51
300 Purchased Professional and Technical Services				
322 Professional Educational Services – Ius	6,800.26	6,045.41	2,940.00	15,785.67
330 Other Professional Services	181,345.27	157,744.62		339,089.89
Total Purchased Professional and Technical Services	\$188,145.53	\$163,790.03	\$2,940.00	\$354,875.56
600 Supplies				
610 General Supplies	963.69	838.28		1,801.97
Total Supplies	\$963.69	\$838.28		\$1,801.97
Total 1220 Sensory Support	\$358,597.73	\$164,628.31	\$2,940.00	\$526,166.04

General Fund (10)

1230 Emotional Support

	<u>Elementary</u>	<u>Secondary</u>	<u>Federal</u>	<u>Total</u>
100 Personnel Services – Salaries				
100 Personnel Services – Salaries	117,126.00	86,162.94	164,070.44	367,359.38
Total Personnel Services – Salaries	\$117,126.00	\$86,162.94	\$164,070.44	\$367,359.38
200 Personnel Services – Employee Benefits				
210 Group Insurance – Contracted Provider	337.57	290.62	531.79	1,159.98
220 Social Security Contributions	8,749.52	6,340.80	12,280.87	27,371.19
230 PSERS Retirement Contributions	38,147.87	28,063.38	53,437.60	119,648.85
250 Unemployment Compensation	74.45	71.49	148.90	294.84
260 Workers' Compensation	1,312.31	983.62	1,842.97	4,138.90
270 Group Insurance – Self-Insurance	42,473.78	22,094.76	35,398.20	99,966.74
Total Personnel Services – Employee Benefits	\$91,095.50	\$57,844.67	\$103,640.33	\$252,580.50
300 Purchased Professional and Technical Services				
322 Professional Educational Services – Ius	43,852.38	38,630.03		82,482.41
Total Purchased Professional and Technical Services	\$43,852.38	\$38,630.03		\$82,482.41
500 Other Purchased Services				
563 Tuition To Nonpublic Schools	1,626.33	1,414.67		3,041.00
Total Other Purchased Services	\$1,626.33	\$1,414.67		\$3,041.00
Total 1230 Emotional Support	\$253,700.21	\$184,052.31	\$267,710.77	\$705,463.29

General Fund (10)

1240 Academic Support

	<u>Elementary</u>	<u>Secondary</u>	<u>Federal</u>	<u>Total</u>
100 Personnel Services – Salaries				
100 Personnel Services – Salaries	2,477,015.94	1,830,343.56		4,307,359.50
Total Personnel Services – Salaries	\$2,477,015.94	\$1,830,343.56		\$4,307,359.50
200 Personnel Services – Employee Benefits				
210 Group Insurance – Contracted Provider	7,116.39	5,384.80		12,501.19
220 Social Security Contributions	185,655.75	137,193.12		322,848.87
230 PSERS Retirement Contributions	801,207.44	595,254.74		1,396,462.18
250 Unemployment Compensation	2,516.29	1,689.30		4,205.59
260 Workers' Compensation	27,993.45	20,693.56		48,687.01
270 Group Insurance – Self-Insurance	725,036.37	600,463.39		1,325,499.76
Total Personnel Services – Employee Benefits	\$1,749,525.69	\$1,360,678.91		\$3,110,204.60
300 Purchased Professional and Technical Services				
322 Professional Educational Services – Ius	3,190.95	2,775.67		5,966.62
324 Professional Educational Services – Employee Training and Development Services			949.80	949.80
329 Professional Educational Services – Other	1,332,025.77	1,158,673.12		2,490,698.89
Total Purchased Professional and Technical Services	\$1,335,216.72	\$1,161,448.79	\$949.80	\$2,497,615.31
500 Other Purchased Services				
510 Student Transportation Services	216,081.98	187,960.61		404,042.59
580 Travel	102.26	88.96		191.22
Total Other Purchased Services	\$216,184.24	\$188,049.57		\$404,233.81
600 Supplies				
610 General Supplies	3,144.93	2,064.21		5,209.14
640 Books and Periodicals	221.72	192.86		414.58
650 Supplies & Fees – Technology Related	4,083.75	3,552.28		7,636.03
Total Supplies	\$7,450.40	\$5,809.35		\$13,259.75
800 Other Objects				
810 Dues and Fees		18.57		18.57
Total Other Objects		\$18.57		\$18.57
Total 1240 Academic Support	\$5,785,392.99	\$4,546,348.75	\$949.80	\$10,332,691.54

LEA : 124151902 Coatesville Area SD

Printed 12/14/2018 8:45:32 AM

General Fund (10)

	<u>Elementary</u>	<u>Secondary</u>	<u>Federal</u>	<u>Total</u>
1241 Learning Support – Public				
100 Personnel Services – Salaries				
100 Personnel Services – Salaries	2,290,065.76	1,708,139.34		3,998,205.10
Total Personnel Services – Salaries	\$2,290,065.76	\$1,708,139.34		\$3,998,205.10
200 Personnel Services – Employee Benefits				
210 Group Insurance – Contracted Provider	6,576.09	5,009.99		11,586.08
220 Social Security Contributions	171,783.32	128,148.88		299,932.20
230 PSERS Retirement Contributions	740,317.82	555,452.82		1,295,770.64
250 Unemployment Compensation	2,429.45	1,627.26		4,056.71
260 Workers' Compensation	25,905.89	19,300.25		45,206.14
270 Group Insurance – Self-Insurance	669,651.86	553,510.40		1,223,162.26
Total Personnel Services – Employee Benefits	\$1,616,664.43	\$1,263,049.60		\$2,879,714.03
300 Purchased Professional and Technical Services				
322 Professional Educational Services – Ius	3,190.95	2,775.67		5,966.62
324 Professional Educational Services – Employee Training and Development Services			949.80	949.80
329 Professional Educational Services – Other	1,332,025.77	1,158,673.12		2,490,698.89
Total Purchased Professional and Technical Services	\$1,335,216.72	\$1,161,448.79	\$949.80	\$2,497,615.31
500 Other Purchased Services				
510 Student Transportation Services	192,322.45	167,293.20		359,615.65
580 Travel	102.26	88.96		191.22
Total Other Purchased Services	\$192,424.71	\$167,382.16		\$359,806.87
600 Supplies				
610 General Supplies	3,094.92	1,068.86		4,163.78
640 Books and Periodicals	221.72	192.86		414.58
650 Supplies & Fees – Technology Related	4,083.75	3,552.28		7,636.03
Total Supplies	\$7,400.39	\$4,814.00		\$12,214.39
800 Other Objects				
810 Dues and Fees		18.57		18.57
Total Other Objects		\$18.57		\$18.57
Total 1241 Learning Support – Public	\$5,441,772.01	\$4,304,852.46	\$949.80	\$9,747,574.27

General Fund (10)

1243 Gifted Support

	<u>Elementary</u>	<u>Secondary</u>	<u>Federal</u>	<u>Total</u>
100 Personnel Services – Salaries				
100 Personnel Services – Salaries	186,950.18	122,204.22		309,154.40
Total Personnel Services – Salaries	\$186,950.18	\$122,204.22		\$309,154.40
200 Personnel Services – Employee Benefits				
210 Group Insurance – Contracted Provider	540.30	374.81		915.11
220 Social Security Contributions	13,872.43	9,044.24		22,916.67
230 PSERS Retirement Contributions	60,889.62	39,801.92		100,691.54
250 Unemployment Compensation	86.84	62.04		148.88
260 Workers' Compensation	2,087.56	1,393.31		3,480.87
270 Group Insurance – Self-Insurance	55,384.51	46,952.99		102,337.50
Total Personnel Services – Employee Benefits	\$132,861.26	\$97,629.31		\$230,490.57
500 Other Purchased Services				
510 Student Transportation Services	23,759.53	20,667.41		44,426.94
Total Other Purchased Services	\$23,759.53	\$20,667.41		\$44,426.94
600 Supplies				
610 General Supplies	50.01	995.35		1,045.36
Total Supplies	\$50.01	\$995.35		\$1,045.36
Total 1243 Gifted Support	\$343,620.98	\$241,496.29		\$585,117.27

LEA : 124151902 Coatesville Area SD

Printed 12/14/2018 8:45:32 AM

General Fund (10)

1270 Multi-Handicapped Support

300 Purchased Professional and Technical Services

	<u>Elementary</u>	<u>Secondary</u>	<u>Federal</u>	<u>Total</u>
322 Professional Educational Services – lus	12,332.51	11,505.27	1,219,911.00	1,243,748.78
330 Other Professional Services	23,545.28	20,481.05		44,026.33
Total Purchased Professional and Technical Services	\$35,877.79	\$31,986.32	\$1,219,911.00	\$1,287,775.11
Total 1270 Multi-Handicapped Support	\$35,877.79	\$31,986.32	\$1,219,911.00	\$1,287,775.11

General Fund (10)

1290 Special Programs - Other Support

100 Personnel Services – Salaries

	<u>Elementary</u>	<u>Secondary</u>	<u>Federal</u>	<u>Total</u>
100 Personnel Services – Salaries	72,191.11	53,197.27		125,388.38
Total Personnel Services – Salaries	\$72,191.11	\$53,197.27		\$125,388.38

200 Personnel Services – Employee Benefits

210 Group Insurance – Contracted Provider	210.88	146.87		357.75
220 Social Security Contributions	5,262.79	4,004.30		9,267.09
230 PSERS Retirement Contributions	23,377.67	17,208.92		40,586.59
250 Unemployment Compensation	143.55	106.03		249.58
260 Workers' Compensation	848.92	630.07		1,478.99
270 Group Insurance – Self-Insurance	30,457.45	15,907.23		46,364.68
Total Personnel Services – Employee Benefits	\$60,301.26	\$38,003.42		\$98,304.68

300 Purchased Professional and Technical Services

322 Professional Educational Services – Ius	5,935,477.80	5,163,022.20		11,098,500.00
330 Other Professional Services	49,449.01	43,013.62		92,462.63
Total Purchased Professional and Technical Services	\$5,984,926.81	\$5,206,035.82		\$11,190,962.63

500 Other Purchased Services

561 Tuition To Other School Districts Within the State	22,316.87	19,412.50		41,729.37
562 Tuition To Pennsylvania Charter Schools	7,968,236.91	6,931,233.76		14,899,470.67
567 Tuition To Approved Private Schools (APS) and PA Chartered Schools for the Deaf and Blind	1,895,968.66	1,649,223.30		3,545,191.96
568 Tuition To Private Residential Rehabilitative Institutions (PRRI) [In-State] and Detention Centers	8,214.53	7,145.47		15,360.00
Total Other Purchased Services	\$9,894,736.97	\$8,607,015.03		\$18,501,752.00

Total 1290 Special Programs - Other Support

	\$16,012,156.15	\$13,904,251.54		\$29,916,407.69
--	------------------------	------------------------	--	------------------------

General Fund (10)

1300 Vocational Education

	<u>Elementary</u>	<u>Secondary</u>	<u>Federal</u>	<u>Total</u>
100 Personnel Services – Salaries				
100 Personnel Services – Salaries		423,598.00		423,598.00
Total Personnel Services – Salaries		\$423,598.00		\$423,598.00
200 Personnel Services – Employee Benefits				
210 Group Insurance – Contracted Provider		1,232.47		1,232.47
220 Social Security Contributions		32,160.12		32,160.12
230 PSERS Retirement Contributions		137,966.10		137,966.10
250 Unemployment Compensation		219.42		219.42
260 Workers' Compensation		4,746.05		4,746.05
270 Group Insurance – Self-Insurance		87,290.64		87,290.64
Total Personnel Services – Employee Benefits		\$263,614.80		\$263,614.80
400 Purchased Property Services				
430 Repairs and Maintenance Services		1,707.95		1,707.95
Total Purchased Property Services		\$1,707.95		\$1,707.95
500 Other Purchased Services				
564 Tuition To Career and Technology Centers		2,921,008.00		2,921,008.00
Total Other Purchased Services		\$2,921,008.00		\$2,921,008.00
600 Supplies				
610 General Supplies		12,056.86		12,056.86
640 Books and Periodicals		420.00		420.00
Total Supplies		\$12,476.86		\$12,476.86
Total 1300 Vocational Education		\$3,622,405.61		\$3,622,405.61

General Fund (10)

	<u>Elementary</u>	<u>Secondary</u>	<u>Federal</u>	<u>Total</u>
1400 Other Instructional Programs – Elementary / Secondary				
100 Personnel Services – Salaries				
100 Personnel Services – Salaries	1,254.00	66,862.00		68,116.00
Total Personnel Services – Salaries	\$1,254.00	\$66,862.00		\$68,116.00
200 Personnel Services – Employee Benefits				
210 Group Insurance – Contracted Provider		165.24		165.24
220 Social Security Contributions	94.39	4,976.66		5,071.05
230 PSERS Retirement Contributions	408.44	21,776.97		22,185.41
250 Unemployment Compensation		44.56		44.56
260 Workers' Compensation	11.34	732.87		744.21
270 Group Insurance – Self-Insurance		25,561.44		25,561.44
Total Personnel Services – Employee Benefits	\$514.17	\$53,257.74		\$53,771.91
500 Other Purchased Services				
561 Tuition To Other School Districts Within the State	27,516.35	23,935.32		51,451.67
Total Other Purchased Services	\$27,516.35	\$23,935.32		\$51,451.67
Total 1400 Other Instructional Programs – Elementary / Secondary	\$29,284.52	\$144,055.06		\$173,339.58

LEA : 124151902 Coatesville Area SD

Printed 12/14/2018 8:45:32 AM

General Fund (10)

1420 Summer School

100 Personnel Services – Salaries

	<u>Elementary</u>	<u>Secondary</u>	<u>Federal</u>	<u>Total</u>
100 Personnel Services – Salaries		6,666.00		6,666.00
Total Personnel Services – Salaries		\$6,666.00		\$6,666.00

200 Personnel Services – Employee Benefits

220 Social Security Contributions		509.96		509.96
230 PSERS Retirement Contributions		2,171.12		2,171.12
250 Unemployment Compensation		5.28		5.28
260 Workers' Compensation		60.25		60.25

Total Personnel Services – Employee Benefits		\$2,746.61		\$2,746.61
Total 1420 Summer School		\$9,412.61		\$9,412.61

General Fund (10)

	<u>Elementary</u>	<u>Secondary</u>	<u>Federal</u>	<u>Total</u>
1430 Homebound Instruction				
100 Personnel Services – Salaries				
100 Personnel Services – Salaries	1,254.00	7,606.50		8,860.50
Total Personnel Services – Salaries	\$1,254.00	\$7,606.50		\$8,860.50
200 Personnel Services – Employee Benefits				
210 Group Insurance – Contracted Provider		7.61		7.61
220 Social Security Contributions	94.39	580.52		674.91
230 PSERS Retirement Contributions	408.44	2,477.39		2,885.83
250 Unemployment Compensation		5.79		5.79
260 Workers' Compensation	11.34	79.35		90.69
Total Personnel Services – Employee Benefits	\$514.17	\$3,150.66		\$3,664.83
Total 1430 Homebound Instruction	\$1,768.17	\$10,757.16		\$12,525.33

General Fund (10)

	<u>Elementary</u>	<u>Secondary</u>	<u>Federal</u>	<u>Total</u>
1440 Alternative Regular Education Programs				
100 Personnel Services – Salaries				
100 Personnel Services – Salaries		52,589.50		52,589.50
Total Personnel Services – Salaries		\$52,589.50		\$52,589.50
200 Personnel Services – Employee Benefits				
210 Group Insurance – Contracted Provider		157.63		157.63
220 Social Security Contributions		3,886.18		3,886.18
230 PSERS Retirement Contributions		17,128.46		17,128.46
250 Unemployment Compensation		33.49		33.49
260 Workers' Compensation		593.27		593.27
270 Group Insurance – Self-Insurance		25,561.44		25,561.44
Total Personnel Services – Employee Benefits		\$47,360.47		\$47,360.47
500 Other Purchased Services				
561 Tuition To Other School Districts Within the State	27,516.35	23,935.32		51,451.67
Total Other Purchased Services	\$27,516.35	\$23,935.32		\$51,451.67
Total 1440 Alternative Regular Education Programs	\$27,516.35	\$123,885.29		\$151,401.64

LEA : 124151902 Coatesville Area SD

Printed 12/14/2018 8:45:32 AM

General Fund (10)

1441 Adjudicated / Court-Placed Programs

500 Other Purchased Services

561 Tuition To Other School Districts Within the State

Total Other Purchased Services

Total 1441 Adjudicated / Court-Placed Programs

	<u>Elementary</u>	<u>Secondary</u>	<u>Federal</u>	<u>Total</u>
561 Tuition To Other School Districts Within the State	27,516.35	23,935.32		51,451.67
Total Other Purchased Services	\$27,516.35	\$23,935.32		\$51,451.67
Total 1441 Adjudicated / Court-Placed Programs	\$27,516.35	\$23,935.32		\$51,451.67

LEA : 124151902 Coatesville Area SD

Printed 12/14/2018 8:45:32 AM

General Fund (10)

1442 Alternative Education Programs

100 Personnel Services – Salaries

100 Personnel Services – Salaries

Total Personnel Services – Salaries

200 Personnel Services – Employee Benefits

210 Group Insurance – Contracted Provider

220 Social Security Contributions

230 PSERS Retirement Contributions

250 Unemployment Compensation

260 Workers' Compensation

270 Group Insurance – Self-Insurance

Total Personnel Services – Employee Benefits

Total 1442 Alternative Education Programs

	<u>Elementary</u>	<u>Secondary</u>	<u>Federal</u>	<u>Total</u>
		52,589.50		52,589.50
		\$52,589.50		\$52,589.50
		157.63		157.63
		3,886.18		3,886.18
		17,128.46		17,128.46
		33.49		33.49
		593.27		593.27
		25,561.44		25,561.44
		\$47,360.47		\$47,360.47
		\$99,949.97		\$99,949.97

General Fund (10)

1500 Nonpublic School Programs

Elementary

Secondary

Federal

Total

300 Purchased Professional and Technical Services

324 Professional Educational Services – Employee Training and Development Services

42,867.00

42,867.00

Total Purchased Professional and Technical Services

\$42,867.00

\$42,867.00

600 Supplies

610 General Supplies

2,624.00

2,624.00

Total Supplies

\$2,624.00

\$2,624.00

Total 1500 Nonpublic School Programs

\$45,491.00

\$45,491.00

LEA : 124151902 Coatesville Area SD

Printed 12/14/2018 8:45:32 AM

General Fund (10)

1800 Pre-Kindergarten

Elementary Secondary Federal Total

100 Personnel Services – Salaries

100 Personnel Services – Salaries 291,867.16

Total Personnel Services – Salaries \$291,867.16

200 Personnel Services – Employee Benefits

210 Group Insurance – Contracted Provider 1,095.85

220 Social Security Contributions 21,918.06

230 PSERS Retirement Contributions 93,554.32

250 Unemployment Compensation 156.35

260 Workers' Compensation 3,528.47

270 Group Insurance – Self-Insurance 87,706.36

Total Personnel Services – Employee Benefits \$207,959.41

300 Purchased Professional and Technical Services

322 Professional Educational Services – lus 131,360.92

Total Purchased Professional and Technical Services \$131,360.92

Total 1800 Pre-Kindergarten \$631,187.49

LEA : 124151902 Coatesville Area SD

Printed 12/14/2018 8:45:32 AM

General Fund (10)

1801 Pre-K Instruction

Elementary Secondary Federal Total

100 Personnel Services – Salaries

100 Personnel Services – Salaries 185,814.01

Total Personnel Services – Salaries \$185,814.01

200 Personnel Services – Employee Benefits

210 Group Insurance – Contracted Provider 497.00

220 Social Security Contributions 13,927.92

230 PSERS Retirement Contributions 60,519.67

250 Unemployment Compensation 161.90

260 Workers' Compensation 1,942.00

270 Group Insurance – Self-Insurance 61,754.08

Total Personnel Services – Employee Benefits \$138,802.57

300 Purchased Professional and Technical Services

322 Professional Educational Services – lus 131,360.92

Total Purchased Professional and Technical Services \$131,360.92

Total 1801 Pre-K Instruction \$455,977.50

LEA : 124151902 Coatesville Area SD

Printed 12/14/2018 8:45:32 AM

General Fund (10)

1803 Pre-K Operations and Maintenance

Elementary

Secondary

Federal

Total

100 Personnel Services – Salaries

100 Personnel Services – Salaries

106,053.15

Total Personnel Services – Salaries

\$106,053.15

200 Personnel Services – Employee Benefits

210 Group Insurance – Contracted Provider

598.85

220 Social Security Contributions

7,990.14

230 PSERS Retirement Contributions

33,034.65

250 Unemployment Compensation

(5.55)

260 Workers' Compensation

1,586.47

270 Group Insurance – Self-Insurance

25,952.28

Total Personnel Services – Employee Benefits

\$69,156.84

Total 1803 Pre-K Operations and Maintenance

\$175,209.99

General Fund (10)

2000 Support Services

Total

100 Personnel Services – Salaries

100 Personnel Services – Salaries 10,599,997.21

Total Personnel Services – Salaries \$10,599,997.21

200 Personnel Services – Employee Benefits

210 Group Insurance – Contracted Provider 35,482.30

220 Social Security Contributions 780,283.65

230 PSERS Retirement Contributions 3,377,408.04

240 Tuition Reimbursement 234,514.21

250 Unemployment Compensation 7,079.65

260 Workers' Compensation 123,754.15

270 Group Insurance – Self-Insurance 2,918,367.97

292 Health Savings Accounts 73,500.00

Total Personnel Services – Employee Benefits \$7,550,389.97

300 Purchased Professional and Technical Services

322 Professional Educational Services – Ius 6,384.00

324 Professional Educational Services – Employee Training and Development Services 368,869.08

330 Other Professional Services 1,522,050.29

340 Technical Services 611,138.03

350 Security / Safety Services 239,798.45

390 Other Purchased Professional and Technical Services 255,322.81

Total Purchased Professional and Technical Services \$3,003,562.66

400 Purchased Property Services

410 Cleaning Services 2,742,059.67

420 Utility Services 270,253.84

430 Repairs and Maintenance Services 970,279.04

440 Rentals 486,384.86

460 Extermination Services 22,352.43

Total Purchased Property Services \$4,491,329.84

500 Other Purchased Services

510 Student Transportation Services 2,754.37

513 Contracted Carriers 10,023,205.19

516 Student Transportation Services From the IU 31,369.52

521 Fire Insurance 93,209.00

522 Automotive Liability Insurance 16,964.00

523 General Property and Liability Insurance 177,956.00

529 Other Insurance 99,953.00

530 Communications 315,417.85

549 Other Advertising/Public Relations 31,013.41

550 Printing and Binding 6,132.89

580 Travel 2,384.43

595 IU Payments By Withholding 49,912.92

Total Other Purchased Services \$10,850,272.58

600 Supplies

610 General Supplies

LEA : 124151902 Coatesville Area SD

Printed 12/14/2018 8:45:35 AM

General Fund (10)

2000 Support Services

Total

600 Supplies

620 Energy	1,556,207.76
630 Food	3,472.15
640 Books and Periodicals	492,099.41
650 Supplies & Fees – Technology Related	295,970.37

Total Supplies	\$2,955,783.89
-----------------------	-----------------------

700 Property

752 Capital Equipment – Original and Additional	50,883.88
758 Capitalized Technology Software - Original	3,651.48
762 Capitalized Equipment - Replacement	12,449.00
768 Capitalized Technology Software - Replacement	36,652.52

Total Property	\$103,636.88
-----------------------	---------------------

800 Other Objects

810 Dues and Fees	488,448.01
820 Claims and Judgments Against the LEA	188,731.27
890 Miscellaneous Expenditures	27,470.42

Total Other Objects	\$704,649.70
----------------------------	---------------------

Total 2000 Support Services	\$40,259,622.73
------------------------------------	------------------------

General Fund (10)

2100 Support Services – Students

	<u>Elementary</u>	<u>Secondary</u>	<u>Federal</u>	<u>Total</u>
100 Personnel Services – Salaries				
100 Personnel Services – Salaries	831,371.15	1,035,229.97		2,128,321.81
Total Personnel Services – Salaries	\$831,371.15	\$1,035,229.97		\$2,128,321.81
200 Personnel Services – Employee Benefits				
210 Group Insurance – Contracted Provider	2,532.98	3,090.02		6,626.28
220 Social Security Contributions	62,228.14	77,957.21		159,814.74
230 PSERS Retirement Contributions	267,641.34	335,995.98		687,208.45
250 Unemployment Compensation	530.12	615.13		1,374.43
260 Workers' Compensation	9,567.68	11,706.34		24,283.82
270 Group Insurance – Self-Insurance	241,342.94	300,253.06		614,114.53
Total Personnel Services – Employee Benefits	\$583,843.20	\$729,617.74		\$1,493,422.25
300 Purchased Professional and Technical Services				
322 Professional Educational Services – lus	2,085.72	1,814.28		3,900.00
324 Professional Educational Services – Employee Training and Development Services	310.18	269.82		1,175.00
330 Other Professional Services	4,852.78	4,221.22		16,969.79
Total Purchased Professional and Technical Services	\$7,248.68	\$6,305.32		\$22,044.79
500 Other Purchased Services				
510 Student Transportation Services		2,754.37		2,754.37
580 Travel				243.96
Total Other Purchased Services		\$2,754.37		\$2,998.33
600 Supplies				
610 General Supplies	15,202.43	14,383.92		29,761.85
630 Food	69.12	60.13		129.25
640 Books and Periodicals	21.49	18.69		40.18
650 Supplies & Fees – Technology Related		365.94		365.94
Total Supplies	\$15,293.04	\$14,828.68		\$30,297.22
800 Other Objects				
810 Dues and Fees				60.00
890 Miscellaneous Expenditures		24,409.12		24,409.12
Total Other Objects		\$24,409.12		\$24,469.12
Total 2100 Support Services – Students	\$1,437,756.07	\$1,813,145.20		\$3,701,553.52

LEA : 124151902 Coatesville Area SD

Printed 12/14/2018 8:45:35 AM

General Fund (10)

2110 Supervision of Student Services

100 Personnel Services – Salaries

	<u>Elementary</u>	<u>Secondary</u>	<u>Federal</u>	<u>Total</u>
100 Personnel Services – Salaries	14,026.01	12,200.63		26,226.64
Total Personnel Services – Salaries	\$14,026.01	\$12,200.63		\$26,226.64

200 Personnel Services – Employee Benefits

210 Group Insurance – Contracted Provider	61.09	53.14		114.23
220 Social Security Contributions	1,073.10	933.44		2,006.54
230 PSERS Retirement Contributions	4,452.22	3,872.79		8,325.01
250 Unemployment Compensation	39.32	34.21		73.53
260 Workers' Compensation	162.70	141.53		304.23
Total Personnel Services – Employee Benefits	\$5,788.43	\$5,035.11		\$10,823.54
Total 2110 Supervision of Student Services	\$19,814.44	\$17,235.74		\$37,050.18

General Fund (10)

	<u>Elementary</u>	<u>Secondary</u>	<u>Federal</u>	<u>Total</u>
2111 Supervision of Student Services – Head of Component				
100 Personnel Services – Salaries				
100 Personnel Services – Salaries	14,026.01	12,200.63		26,226.64
Total Personnel Services – Salaries	\$14,026.01	\$12,200.63		\$26,226.64
200 Personnel Services – Employee Benefits				
210 Group Insurance – Contracted Provider	61.09	53.14		114.23
220 Social Security Contributions	1,073.10	933.44		2,006.54
230 PSERS Retirement Contributions	4,452.22	3,872.79		8,325.01
250 Unemployment Compensation	39.32	34.21		73.53
260 Workers' Compensation	162.70	141.53		304.23
Total Personnel Services – Employee Benefits	\$5,788.43	\$5,035.11		\$10,823.54
Total 2111 Supervision of Student Services – Head of Component	\$19,814.44	\$17,235.74		\$37,050.18

LEA : 124151902 Coatesville Area SD

Printed 12/14/2018 8:45:35 AM

General Fund (10)

2120 Guidance Services

	<u>Elementary</u>	<u>Secondary</u>	<u>Federal</u>	<u>Total</u>
100 Personnel Services – Salaries				
100 Personnel Services – Salaries	649,582.30	995,709.91		1,645,292.21
Total Personnel Services – Salaries	\$649,582.30	\$995,709.91		\$1,645,292.21
200 Personnel Services – Employee Benefits				
210 Group Insurance – Contracted Provider	1,894.11	2,976.00		4,870.11
220 Social Security Contributions	48,548.70	75,005.20		123,553.90
230 PSERS Retirement Contributions	208,548.81	323,225.27		531,774.08
250 Unemployment Compensation	378.00	531.92		909.92
260 Workers' Compensation	7,349.35	11,237.14		18,586.49
270 Group Insurance – Self-Insurance	185,394.67	287,781.23		473,175.90
Total Personnel Services – Employee Benefits	\$452,113.64	\$700,756.76		\$1,152,870.40
300 Purchased Professional and Technical Services				
324 Professional Educational Services – Employee Training and Development Services	310.18	269.82		580.00
Total Purchased Professional and Technical Services	\$310.18	\$269.82		\$580.00
500 Other Purchased Services				
510 Student Transportation Services		2,754.37		2,754.37
Total Other Purchased Services		\$2,754.37		\$2,754.37
600 Supplies				
610 General Supplies	3,399.58	4,117.11		7,516.69
630 Food	69.12	60.13		129.25
640 Books and Periodicals	21.49	18.69		40.18
650 Supplies & Fees – Technology Related		365.94		365.94
Total Supplies	\$3,490.19	\$4,561.87		\$8,052.06
800 Other Objects				
890 Miscellaneous Expenditures		24,409.12		24,409.12
Total Other Objects		\$24,409.12		\$24,409.12
Total 2120 Guidance Services	\$1,105,496.31	\$1,728,461.85		\$2,833,958.16

General Fund (10)

	<u>Elementary</u>	<u>Secondary</u>	<u>Federal</u>	<u>Total</u>
2130 Attendance Services				
100 Personnel Services – Salaries				
100 Personnel Services – Salaries				261,720.69
Total Personnel Services – Salaries				\$261,720.69
200 Personnel Services – Employee Benefits				
210 Group Insurance – Contracted Provider				1,003.28
220 Social Security Contributions				19,629.39
230 PSERS Retirement Contributions				83,571.13
250 Unemployment Compensation				229.18
260 Workers' Compensation				3,009.80
270 Group Insurance – Self-Insurance				72,518.53
Total Personnel Services – Employee Benefits				\$179,961.31
300 Purchased Professional and Technical Services				
324 Professional Educational Services – Employee Training and Development Services				595.00
330 Other Professional Services				5,032.78
Total Purchased Professional and Technical Services				\$5,627.78
500 Other Purchased Services				
580 Travel				243.96
Total Other Purchased Services				\$243.96
600 Supplies				
610 General Supplies				175.50
Total Supplies				\$175.50
Total 2130 Attendance Services				\$447,729.24

General Fund (10)

2140 Psychological Services

	<u>Elementary</u>	<u>Secondary</u>	<u>Federal</u>	<u>Total</u>
100 Personnel Services – Salaries				
100 Personnel Services – Salaries	167,762.84	27,319.43		195,082.27
Total Personnel Services – Salaries	\$167,762.84	\$27,319.43		\$195,082.27
200 Personnel Services – Employee Benefits				
210 Group Insurance – Contracted Provider	577.78	60.88		638.66
220 Social Security Contributions	12,606.34	2,018.57		14,624.91
230 PSERS Retirement Contributions	54,640.31	8,897.92		63,538.23
250 Unemployment Compensation	112.80	49.00		161.80
260 Workers' Compensation	2,055.63	327.67		2,383.30
270 Group Insurance – Self-Insurance	55,948.27	12,471.83		68,420.10
Total Personnel Services – Employee Benefits	\$125,941.13	\$23,825.87		\$149,767.00
300 Purchased Professional and Technical Services				
322 Professional Educational Services – Ius	2,085.72	1,814.28		3,900.00
330 Other Professional Services	4,852.78	4,221.22		9,074.00
Total Purchased Professional and Technical Services	\$6,938.50	\$6,035.50		\$12,974.00
600 Supplies				
610 General Supplies	11,802.85	10,266.81		22,069.66
Total Supplies	\$11,802.85	\$10,266.81		\$22,069.66
Total 2140 Psychological Services	\$312,445.32	\$67,447.61		\$379,892.93

LEA : 124151902 Coatesville Area SD

Printed 12/14/2018 8:45:35 AM

General Fund (10)

2170 Student Accounting Services

Elementary

Secondary

Federal

Total

300 Purchased Professional and Technical Services

330 Other Professional Services

2,863.01

Total Purchased Professional and Technical Services

\$2,863.01

800 Other Objects

810 Dues and Fees

60.00

Total Other Objects

\$60.00

Total 2170 Student Accounting Services

\$2,923.01

General Fund (10)

2200 Support Services – Instructional Staff

	<u>Elementary</u>	<u>Secondary</u>	<u>Federal</u>	<u>Total</u>
100 Personnel Services – Salaries				
100 Personnel Services – Salaries	736,063.22	518,574.42	54,807.29	1,309,444.93
Total Personnel Services – Salaries	\$736,063.22	\$518,574.42	\$54,807.29	\$1,309,444.93
200 Personnel Services – Employee Benefits				
210 Group Insurance – Contracted Provider	2,372.63	1,836.93	248.77	4,458.33
220 Social Security Contributions	55,170.70	38,462.49	3,982.90	97,616.09
230 PSERS Retirement Contributions	229,366.96	159,818.84	17,500.60	406,686.40
240 Tuition Reimbursement	75,053.87	128,284.34		203,338.21
250 Unemployment Compensation	421.70	391.04	37.22	849.96
260 Workers' Compensation	8,497.91	6,059.65	661.08	15,218.64
270 Group Insurance – Self-Insurance	166,689.53	161,625.01	26,512.44	354,826.98
Total Personnel Services – Employee Benefits	\$537,573.30	\$496,478.30	\$48,943.01	\$1,082,994.61
300 Purchased Professional and Technical Services				
324 Professional Educational Services – Employee Training and Development Services	2,491.09	2,166.90	356,597.38	361,255.37
330 Other Professional Services	3,226.14	2,806.29		6,032.43
Total Purchased Professional and Technical Services	\$5,717.23	\$4,973.19	\$356,597.38	\$367,287.80
500 Other Purchased Services				
580 Travel		824.04		824.04
Total Other Purchased Services		\$824.04		\$824.04
600 Supplies				
610 General Supplies	116,293.49	19,403.34	39,861.92	175,558.75
640 Books and Periodicals	263,815.50	226,198.28		490,013.78
650 Supplies & Fees – Technology Related	3,366.47	1,213.84		4,580.31
Total Supplies	\$383,475.46	\$246,815.46	\$39,861.92	\$670,152.84
700 Property				
752 Capital Equipment – Original and Additional	835.37	1,670.23		2,505.60
Total Property	\$835.37	\$1,670.23		\$2,505.60
800 Other Objects				
810 Dues and Fees		5,230.00		5,230.00
Total Other Objects		\$5,230.00		\$5,230.00
Total 2200 Support Services – Instructional Staff	\$1,663,664.58	\$1,274,565.64	\$500,209.60	\$3,438,439.82

General Fund (10)

2240 Computer-Assisted Instruction Support Services

100 Personnel Services – Salaries

100 Personnel Services – Salaries

Elementary

Secondary

Federal

Total

162,371.67

141,240.29

303,611.96

Total Personnel Services – Salaries

\$162,371.67

\$141,240.29

\$303,611.96

200 Personnel Services – Employee Benefits

210 Group Insurance – Contracted Provider

711.34

618.77

1,330.11

220 Social Security Contributions

11,996.56

10,435.31

22,431.87

230 PSERS Retirement Contributions

51,068.09

44,421.99

95,490.08

250 Unemployment Compensation

131.84

114.68

246.52

260 Workers' Compensation

1,929.01

1,677.96

3,606.97

270 Group Insurance – Self-Insurance

71,635.21

62,312.45

133,947.66

Total Personnel Services – Employee Benefits

\$137,472.05

\$119,581.16

\$257,053.21

Total 2240 Computer-Assisted Instruction Support Services

\$299,843.72

\$260,821.45

\$560,665.17

General Fund (10)

2250 School Library Services

	<u>Elementary</u>	<u>Secondary</u>	<u>Federal</u>	<u>Total</u>
100 Personnel Services – Salaries				
100 Personnel Services – Salaries	255,908.01	100,907.61		356,815.62
Total Personnel Services – Salaries	\$255,908.01	\$100,907.61		\$356,815.62
200 Personnel Services – Employee Benefits				
210 Group Insurance – Contracted Provider	776.40	448.43		1,224.83
220 Social Security Contributions	19,347.44	7,301.34		26,648.78
230 PSERS Retirement Contributions	83,120.91	32,605.55		115,726.46
250 Unemployment Compensation	141.89	147.64		289.53
260 Workers' Compensation	2,863.93	1,158.89		4,022.82
270 Group Insurance – Self-Insurance	59,136.43	68,069.10		127,205.53
Total Personnel Services – Employee Benefits	\$165,387.00	\$109,730.95		\$275,117.95
600 Supplies				
610 General Supplies	943.11	1,652.88		2,595.99
640 Books and Periodicals	7,422.83	1,637.98		9,060.81
650 Supplies & Fees – Technology Related	3,366.47	1,213.84		4,580.31
Total Supplies	\$11,732.41	\$4,504.70		\$16,237.11
700 Property				
752 Capital Equipment – Original and Additional	835.37	1,670.23		2,505.60
Total Property	\$835.37	\$1,670.23		\$2,505.60
800 Other Objects				
810 Dues and Fees		5,230.00		5,230.00
Total Other Objects		\$5,230.00		\$5,230.00
Total 2250 School Library Services	\$433,862.79	\$222,043.49		\$655,906.28

General Fund (10)

	<u>Elementary</u>	<u>Secondary</u>	<u>Federal</u>	<u>Total</u>
2260 Instruction and Curriculum Development Services				
100 Personnel Services – Salaries				
100 Personnel Services – Salaries	317,783.54	276,426.52	54,807.29	649,017.35
Total Personnel Services – Salaries	\$317,783.54	\$276,426.52	\$54,807.29	\$649,017.35
200 Personnel Services – Employee Benefits				
210 Group Insurance – Contracted Provider	884.89	769.73	248.77	1,903.39
220 Social Security Contributions	23,826.70	20,725.84	3,982.90	48,535.44
230 PSERS Retirement Contributions	95,177.96	82,791.30	17,500.60	195,469.86
250 Unemployment Compensation	147.97	128.72	37.22	313.91
260 Workers' Compensation	3,704.97	3,222.80	661.08	7,588.85
270 Group Insurance – Self-Insurance	35,917.89	31,243.46	26,512.44	93,673.79
Total Personnel Services – Employee Benefits	\$159,660.38	\$138,881.85	\$48,943.01	\$347,485.24
300 Purchased Professional and Technical Services				
330 Other Professional Services	3,226.14	2,806.29		6,032.43
Total Purchased Professional and Technical Services	\$3,226.14	\$2,806.29		\$6,032.43
500 Other Purchased Services				
580 Travel		824.04		824.04
Total Other Purchased Services		\$824.04		\$824.04
600 Supplies				
610 General Supplies	115,350.38	17,750.46		133,100.84
640 Books and Periodicals	256,392.67	224,560.30		480,952.97
Total Supplies	\$371,743.05	\$242,310.76		\$614,053.81
Total 2260 Instruction and Curriculum Development Services	\$852,413.11	\$661,249.46	\$103,750.30	\$1,617,412.87

LEA : 124151902 Coatesville Area SD

Printed 12/14/2018 8:45:35 AM

General Fund (10)

	<u>Elementary</u>	<u>Secondary</u>	<u>Federal</u>	<u>Total</u>
2270 Instructional Staff Professional Development Services				
200 Personnel Services – Employee Benefits				
240 Tuition Reimbursement	75,053.87	128,284.34		203,338.21
Total Personnel Services – Employee Benefits	\$75,053.87	\$128,284.34		\$203,338.21
300 Purchased Professional and Technical Services				
324 Professional Educational Services – Employee Training and Development Services	2,491.09	2,166.90	356,597.38	361,255.37
Total Purchased Professional and Technical Services	\$2,491.09	\$2,166.90	\$356,597.38	\$361,255.37
600 Supplies				
610 General Supplies			39,861.92	39,861.92
Total Supplies			\$39,861.92	\$39,861.92
Total 2270 Instructional Staff Professional Development Services	\$77,544.96	\$130,451.24	\$396,459.30	\$604,455.50

General Fund (10)

	<u>Elementary</u>	<u>Secondary</u>	<u>Federal</u>	<u>Total</u>
2300 Support Services – Administration				
100 Personnel Services – Salaries				
100 Personnel Services – Salaries	1,358,942.67	1,760,347.67		3,714,237.91
Total Personnel Services – Salaries	\$1,358,942.67	\$1,760,347.67		\$3,714,237.91
200 Personnel Services – Employee Benefits				
210 Group Insurance – Contracted Provider	4,503.94	5,834.46		12,323.13
220 Social Security Contributions	101,872.24	131,063.39		270,909.97
230 PSERS Retirement Contributions	430,487.74	557,858.39		1,173,115.59
250 Unemployment Compensation	806.01	972.58		2,048.75
260 Workers' Compensation	16,129.46	20,484.73		43,678.76
270 Group Insurance – Self-Insurance	250,961.01	395,160.40		740,309.42
292 Health Savings Accounts				73,500.00
Total Personnel Services – Employee Benefits	\$804,760.40	\$1,111,373.95		\$2,315,885.62
300 Purchased Professional and Technical Services				
330 Other Professional Services	14,268.67	8,284.80		1,123,191.82
390 Other Purchased Professional and Technical Services	30,168.53	706.50		30,875.03
Total Purchased Professional and Technical Services	\$44,437.20	\$8,991.30		\$1,154,066.85
400 Purchased Property Services				
430 Repairs and Maintenance Services	122.47	244.86		367.33
440 Rentals				7,471.43
Total Purchased Property Services	\$122.47	\$244.86		\$7,838.76
500 Other Purchased Services				
530 Communications				13,738.06
549 Other Advertising/Public Relations				31,013.41
550 Printing and Binding				6,132.89
580 Travel	161.03	321.97		570.51
Total Other Purchased Services	\$161.03	\$321.97		\$51,454.87
600 Supplies				
610 General Supplies	2,295.96	12,061.74		33,035.48
630 Food	1,388.77	1,609.92		3,342.90
640 Books and Periodicals	495.90	614.63		2,045.45
650 Supplies & Fees – Technology Related	112.00	223.93		335.93
Total Supplies	\$4,292.63	\$14,510.22		\$38,759.76
800 Other Objects				
810 Dues and Fees	4,023.86	13,131.13		453,341.17
820 Claims and Judgments Against the LEA				188,731.27
Total Other Objects	\$4,023.86	\$13,131.13		\$642,072.44
Total 2300 Support Services – Administration	\$2,216,740.26	\$2,908,921.10		\$7,924,316.21

LEA : 124151902 Coatesville Area SD

Printed 12/14/2018 8:45:35 AM

General Fund (10)

2310 Board Services

Elementary Secondary Federal Total

100	<u>Personnel Services – Salaries</u>			
	100 Personnel Services – Salaries			61,185.49
Total Personnel Services – Salaries				\$61,185.49
200	<u>Personnel Services – Employee Benefits</u>			
	210 Group Insurance – Contracted Provider			271.60
	220 Social Security Contributions			4,597.44
	230 PSERS Retirement Contributions			19,658.47
	250 Unemployment Compensation			37.23
	260 Workers' Compensation			743.63
	270 Group Insurance – Self-Insurance			18,750.96
Total Personnel Services – Employee Benefits				\$44,059.33
300	<u>Purchased Professional and Technical Services</u>			
	330 Other Professional Services			4,522.84
Total Purchased Professional and Technical Services				\$4,522.84
500	<u>Other Purchased Services</u>			
	530 Communications			7,139.73
	549 Other Advertising/Public Relations			31,013.41
	550 Printing and Binding			340.86
	580 Travel			87.51
Total Other Purchased Services				\$38,581.51
600	<u>Supplies</u>			
	610 General Supplies			1,265.12
	630 Food			2,025.72
Total Supplies				\$3,290.84
800	<u>Other Objects</u>			
	810 Dues and Fees			15,100.00
	820 Claims and Judgments Against the LEA			188,731.27
Total Other Objects				\$203,831.27
Total 2310 Board Services				\$355,471.28

LEA : 124151902 Coatesville Area SD

Printed 12/14/2018 8:45:35 AM

General Fund (10)

	<u>Elementary</u>	<u>Secondary</u>	<u>Federal</u>	<u>Total</u>
2330 Tax Assessment and Collection Services				
300 <u>Purchased Professional and Technical Services</u>				
330 Other Professional Services				184,983.73
Total Purchased Professional and Technical Services				\$184,983.73
500 <u>Other Purchased Services</u>				
530 Communications				6,598.33
Total Other Purchased Services				\$6,598.33
800 <u>Other Objects</u>				
810 Dues and Fees				381,625.83
Total Other Objects				\$381,625.83
Total 2330 Tax Assessment and Collection Services				\$573,207.89

General Fund (10)

	<u>Elementary</u>	<u>Secondary</u>	<u>Federal</u>	<u>Total</u>
2350 Legal and Accounting Services				
100 Personnel Services – Salaries				
100 Personnel Services – Salaries				10,000.00
Total Personnel Services – Salaries				\$10,000.00
200 Personnel Services – Employee Benefits				
210 Group Insurance – Contracted Provider				38.05
220 Social Security Contributions				759.12
230 PSERS Retirement Contributions				3,257.00
260 Workers' Compensation				139.72
270 Group Insurance – Self-Insurance				1,641.42
Total Personnel Services – Employee Benefits				\$5,835.31
300 Purchased Professional and Technical Services				
330 Other Professional Services				900,867.78
Total Purchased Professional and Technical Services				\$900,867.78
600 Supplies				
610 General Supplies				988.80
Total Supplies				\$988.80
Total 2350 Legal and Accounting Services				\$917,691.89

General Fund (10)

2360 Office of the Superintendent / Executive Director Services

Elementary

Secondary

Federal

Total

100 Personnel Services – Salaries

100 Personnel Services – Salaries 498,141.35

Total Personnel Services – Salaries \$498,141.35

200 Personnel Services – Employee Benefits

210 Group Insurance – Contracted Provider 1,596.41

220 Social Security Contributions 30,725.97

230 PSERS Retirement Contributions 153,509.31

250 Unemployment Compensation 225.60

260 Workers' Compensation 5,874.22

270 Group Insurance – Self-Insurance 68,260.21

Total Personnel Services – Employee Benefits \$260,191.72

300 Purchased Professional and Technical Services

330 Other Professional Services 674.00

Total Purchased Professional and Technical Services \$674.00

400 Purchased Property Services

440 Rentals 2,284.80

Total Purchased Property Services \$2,284.80

600 Supplies

610 General Supplies 782.16

630 Food (1,681.51)

640 Books and Periodicals 934.92

Total Supplies \$35.57

800 Other Objects

810 Dues and Fees 2,369.35

Total Other Objects \$2,369.35

Total 2360 Office of the Superintendent / Executive Director Services

\$763,696.79

LEA : 124151902 Coatesville Area SD

Printed 12/14/2018 8:45:35 AM

General Fund (10)

2380 Office of the Principal Services

	<u>Elementary</u>	<u>Secondary</u>	<u>Federal</u>	<u>Total</u>
100 Personnel Services – Salaries				
100 Personnel Services – Salaries	1,358,942.67	1,760,347.67		3,119,290.34
Total Personnel Services – Salaries	\$1,358,942.67	\$1,760,347.67		\$3,119,290.34
200 Personnel Services – Employee Benefits				
210 Group Insurance – Contracted Provider	4,503.94	5,834.46		10,338.40
220 Social Security Contributions	101,872.24	131,063.39		232,935.63
230 PSERS Retirement Contributions	430,487.74	557,858.39		988,346.13
250 Unemployment Compensation	806.01	972.58		1,778.59
260 Workers' Compensation	16,129.46	20,484.73		36,614.19
270 Group Insurance – Self-Insurance	250,961.01	395,160.40		646,121.41
Total Personnel Services – Employee Benefits	\$804,760.40	\$1,111,373.95		\$1,916,134.35
300 Purchased Professional and Technical Services				
330 Other Professional Services	14,268.67	8,284.80		22,553.47
390 Other Purchased Professional and Technical Services	30,168.53	706.50		30,875.03
Total Purchased Professional and Technical Services	\$44,437.20	\$8,991.30		\$53,428.50
400 Purchased Property Services				
430 Repairs and Maintenance Services	122.47	244.86		367.33
Total Purchased Property Services	\$122.47	\$244.86		\$367.33
500 Other Purchased Services				
580 Travel	161.03	321.97		483.00
Total Other Purchased Services	\$161.03	\$321.97		\$483.00
600 Supplies				
610 General Supplies	2,295.96	12,061.74		14,357.70
630 Food	1,388.77	1,609.92		2,998.69
640 Books and Periodicals	495.90	614.63		1,110.53
650 Supplies & Fees – Technology Related	112.00	223.93		335.93
Total Supplies	\$4,292.63	\$14,510.22		\$18,802.85
800 Other Objects				
810 Dues and Fees	4,023.86	13,131.13		17,154.99
Total Other Objects	\$4,023.86	\$13,131.13		\$17,154.99
Total 2380 Office of the Principal Services	\$2,216,740.26	\$2,908,921.10		\$5,125,661.36

General Fund (10)

	<u>Elementary</u>	<u>Secondary</u>	<u>Federal</u>	<u>Total</u>
2390 Other Administration Services				
100 Personnel Services – Salaries				
100 Personnel Services – Salaries				25,620.73
Total Personnel Services – Salaries				\$25,620.73
200 Personnel Services – Employee Benefits				
210 Group Insurance – Contracted Provider				78.67
220 Social Security Contributions				1,891.81
230 PSERS Retirement Contributions				8,344.68
250 Unemployment Compensation				7.33
260 Workers' Compensation				307.00
270 Group Insurance – Self-Insurance				5,535.42
292 Health Savings Accounts				73,500.00
Total Personnel Services – Employee Benefits				\$89,664.91
300 Purchased Professional and Technical Services				
330 Other Professional Services				9,590.00
Total Purchased Professional and Technical Services				\$9,590.00
400 Purchased Property Services				
440 Rentals				5,186.63
Total Purchased Property Services				\$5,186.63
500 Other Purchased Services				
550 Printing and Binding				5,792.03
Total Other Purchased Services				\$5,792.03
600 Supplies				
610 General Supplies				15,641.70
Total Supplies				\$15,641.70
800 Other Objects				
810 Dues and Fees				37,091.00
Total Other Objects				\$37,091.00
Total 2390 Other Administration Services				\$188,587.00

General Fund (10)

	<u>Elementary</u>	<u>Secondary</u>	<u>Federal</u>	<u>Total</u>
2400 Support Services – Pupil Health				
100 Personnel Services – Salaries				
100 Personnel Services – Salaries				565,757.49
Total Personnel Services – Salaries				\$565,757.49
200 Personnel Services – Employee Benefits				
210 Group Insurance – Contracted Provider				1,793.92
220 Social Security Contributions				42,113.06
230 PSERS Retirement Contributions				182,306.02
250 Unemployment Compensation				364.51
260 Workers' Compensation				6,421.38
270 Group Insurance – Self-Insurance				189,742.83
Total Personnel Services – Employee Benefits				\$422,741.72
300 Purchased Professional and Technical Services				
322 Professional Educational Services – lus				2,484.00
330 Other Professional Services				207,397.75
Total Purchased Professional and Technical Services				\$209,881.75
400 Purchased Property Services				
430 Repairs and Maintenance Services				546.00
Total Purchased Property Services				\$546.00
600 Supplies				
610 General Supplies				14,168.19
Total Supplies				\$14,168.19
Total 2400 Support Services – Pupil Health				\$1,213,095.15

General Fund (10)

2420 Medical Services

	<u>Elementary</u>	<u>Secondary</u>	<u>Federal</u>	<u>Total</u>
100 <u>Personnel Services – Salaries</u>				
100 Personnel Services – Salaries				565,757.49
Total Personnel Services – Salaries				\$565,757.49
200 <u>Personnel Services – Employee Benefits</u>				
210 Group Insurance – Contracted Provider				1,793.92
220 Social Security Contributions				42,113.06
230 PSERS Retirement Contributions				182,306.02
250 Unemployment Compensation				364.51
260 Workers' Compensation				6,421.38
270 Group Insurance – Self-Insurance				189,742.83
Total Personnel Services – Employee Benefits				\$422,741.72
300 <u>Purchased Professional and Technical Services</u>				
322 Professional Educational Services – lus				2,484.00
330 Other Professional Services				207,397.75
Total Purchased Professional and Technical Services				\$209,881.75
400 <u>Purchased Property Services</u>				
430 Repairs and Maintenance Services				546.00
Total Purchased Property Services				\$546.00
600 <u>Supplies</u>				
610 General Supplies				14,168.19
Total Supplies				\$14,168.19
Total 2420 Medical Services				\$1,213,095.15

General Fund (10)

2500 Support Services – Business

Elementary

Secondary

Federal

Total

100 Personnel Services – Salaries

100 Personnel Services – Salaries 690,143.53

Total Personnel Services – Salaries \$690,143.53

200 Personnel Services – Employee Benefits

210 Group Insurance – Contracted Provider 2,745.17

220 Social Security Contributions 48,593.01

230 PSERS Retirement Contributions 221,365.76

250 Unemployment Compensation 460.61

260 Workers' Compensation 8,226.15

270 Group Insurance – Self-Insurance 173,801.32

Total Personnel Services – Employee Benefits \$455,192.02

300 Purchased Professional and Technical Services

324 Professional Educational Services – Employee Training and Development Services 48.46

330 Other Professional Services 29,000.00

Total Purchased Professional and Technical Services \$29,048.46

400 Purchased Property Services

440 Rentals 17,772.94

Total Purchased Property Services \$17,772.94

500 Other Purchased Services

530 Communications 69,064.00

Total Other Purchased Services \$69,064.00

600 Supplies

610 General Supplies 10,370.08

Total Supplies \$10,370.08

800 Other Objects

810 Dues and Fees 23,667.53

Total Other Objects \$23,667.53

Total 2500 Support Services – Business \$1,295,258.56

General Fund (10)

	<u>Elementary</u>	<u>Secondary</u>	<u>Federal</u>	<u>Total</u>
2510 Fiscal Services				
100 <u>Personnel Services – Salaries</u>				
100 Personnel Services – Salaries				690,143.53
Total Personnel Services – Salaries				\$690,143.53
200 <u>Personnel Services – Employee Benefits</u>				
210 Group Insurance – Contracted Provider				2,745.17
220 Social Security Contributions				48,593.01
230 PSERS Retirement Contributions				221,365.76
250 Unemployment Compensation				460.61
260 Workers' Compensation				8,226.15
270 Group Insurance – Self-Insurance				173,801.32
Total Personnel Services – Employee Benefits				\$455,192.02
300 <u>Purchased Professional and Technical Services</u>				
324 Professional Educational Services – Employee Training and Development Services				48.46
330 Other Professional Services				29,000.00
Total Purchased Professional and Technical Services				\$29,048.46
400 <u>Purchased Property Services</u>				
440 Rentals				17,772.94
Total Purchased Property Services				\$17,772.94
500 <u>Other Purchased Services</u>				
530 Communications				69,064.00
Total Other Purchased Services				\$69,064.00
600 <u>Supplies</u>				
610 General Supplies				10,370.08
Total Supplies				\$10,370.08
800 <u>Other Objects</u>				
810 Dues and Fees				23,667.53
Total Other Objects				\$23,667.53
Total 2510 Fiscal Services				\$1,295,258.56

LEA : 124151902 Coatesville Area SD

Printed 12/14/2018 8:45:35 AM

General Fund (10)

	<u>Elementary</u>	<u>Secondary</u>	<u>Federal</u>	<u>Total</u>
2511 Supervision of Fiscal Services - Head of Component				
100 Personnel Services – Salaries				
100 Personnel Services – Salaries				234,904.48
Total Personnel Services – Salaries				\$234,904.48
200 Personnel Services – Employee Benefits				
210 Group Insurance – Contracted Provider				791.82
220 Social Security Contributions				14,505.60
230 PSERS Retirement Contributions				75,047.72
250 Unemployment Compensation				152.54
260 Workers' Compensation				2,812.04
270 Group Insurance – Self-Insurance				38,396.25
Total Personnel Services – Employee Benefits				\$131,705.97
600 Supplies				
610 General Supplies				2,880.98
Total Supplies				\$2,880.98
800 Other Objects				
810 Dues and Fees				572.53
Total Other Objects				\$572.53
Total 2511 Supervision of Fiscal Services - Head of Component				\$370,063.96

General Fund (10)

2513 Receiving and Disbursing Funds Services

Elementary

Secondary

Federal

Total

100 Personnel Services – Salaries

100 Personnel Services – Salaries

350,729.45

Total Personnel Services – Salaries

\$350,729.45

200 Personnel Services – Employee Benefits

210 Group Insurance – Contracted Provider

1,463.43

220 Social Security Contributions

26,413.13

230 PSERS Retirement Contributions

112,829.55

250 Unemployment Compensation

233.62

260 Workers' Compensation

4,164.35

270 Group Insurance – Self-Insurance

89,452.51

Total Personnel Services – Employee Benefits

\$234,556.59

300 Purchased Professional and Technical Services

324 Professional Educational Services – Employee Training and Development Services

48.46

330 Other Professional Services

29,000.00

Total Purchased Professional and Technical Services

\$29,048.46

400 Purchased Property Services

440 Rentals

17,772.94

Total Purchased Property Services

\$17,772.94

500 Other Purchased Services

530 Communications

69,064.00

Total Other Purchased Services

\$69,064.00

600 Supplies

610 General Supplies

2,984.18

Total Supplies

\$2,984.18

800 Other Objects

810 Dues and Fees

4,480.18

Total Other Objects

\$4,480.18

Total 2513 Receiving and Disbursing Funds Services

\$708,635.80

General Fund (10)

2514 Payroll Services

Elementary

Secondary

Federal

Total

100 Personnel Services – Salaries

100 Personnel Services – Salaries

104,509.60

Total Personnel Services – Salaries

\$104,509.60

200 Personnel Services – Employee Benefits

210 Group Insurance – Contracted Provider

489.92

220 Social Security Contributions

7,674.28

230 PSERS Retirement Contributions

33,488.49

250 Unemployment Compensation

74.45

260 Workers' Compensation

1,249.76

270 Group Insurance – Self-Insurance

45,952.56

Total Personnel Services – Employee Benefits

\$88,929.46

600 Supplies

610 General Supplies

4,504.92

Total Supplies

\$4,504.92

800 Other Objects

810 Dues and Fees

18,614.82

Total Other Objects

\$18,614.82

Total 2514 Payroll Services

\$216,558.80

General Fund (10)

2600 Operation and Maintenance of Plant Services

	<u>Elementary</u>	<u>Secondary</u>	<u>Federal</u>	<u>Total</u>
--	-------------------	------------------	----------------	--------------

100 Personnel Services – Salaries

100 Personnel Services – Salaries				1,712,135.20
-----------------------------------	--	--	--	--------------

Total Personnel Services – Salaries				\$1,712,135.20
--	--	--	--	-----------------------

200 Personnel Services – Employee Benefits

210 Group Insurance – Contracted Provider				5,696.48
---	--	--	--	----------

220 Social Security Contributions				125,059.76
-----------------------------------	--	--	--	------------

230 PSERS Retirement Contributions				552,189.65
------------------------------------	--	--	--	------------

250 Unemployment Compensation				1,675.52
-------------------------------	--	--	--	----------

260 Workers' Compensation				20,243.98
---------------------------	--	--	--	-----------

270 Group Insurance – Self-Insurance				742,356.03
--------------------------------------	--	--	--	------------

Total Personnel Services – Employee Benefits				\$1,447,221.42
---	--	--	--	-----------------------

300 Purchased Professional and Technical Services

324 Professional Educational Services – Employee Training and Development Services				95.00
--	--	--	--	-------

350 Security / Safety Services				239,798.45
--------------------------------	--	--	--	------------

390 Other Purchased Professional and Technical Services				223,363.75
---	--	--	--	------------

Total Purchased Professional and Technical Services				\$463,257.20
--	--	--	--	---------------------

400 Purchased Property Services

410 Cleaning Services				2,742,059.67
-----------------------	--	--	--	--------------

420 Utility Services				270,253.84
----------------------	--	--	--	------------

430 Repairs and Maintenance Services				955,909.60
--------------------------------------	--	--	--	------------

440 Rentals				61,250.78
-------------	--	--	--	-----------

460 Extermination Services				22,352.43
----------------------------	--	--	--	-----------

Total Purchased Property Services				\$4,051,826.32
--	--	--	--	-----------------------

500 Other Purchased Services

521 Fire Insurance				93,209.00
--------------------	--	--	--	-----------

522 Automotive Liability Insurance				16,964.00
------------------------------------	--	--	--	-----------

523 General Property and Liability Insurance				177,956.00
--	--	--	--	------------

529 Other Insurance				99,953.00
---------------------	--	--	--	-----------

Total Other Purchased Services				\$388,082.00
---------------------------------------	--	--	--	---------------------

600 Supplies

610 General Supplies	158,345.42	137,738.01		296,083.43
----------------------	------------	------------	--	------------

620 Energy				1,556,207.76
------------	--	--	--	--------------

650 Supplies & Fees – Technology Related				7,207.50
--	--	--	--	----------

Total Supplies	\$158,345.42	\$137,738.01		\$1,859,498.69
-----------------------	---------------------	---------------------	--	-----------------------

700 Property

752 Capital Equipment – Original and Additional				38,582.78
---	--	--	--	-----------

762 Capitalized Equipment - Replacement				12,449.00
---	--	--	--	-----------

Total Property				\$51,031.78
-----------------------	--	--	--	--------------------

800 Other Objects

810 Dues and Fees				3,595.00
-------------------	--	--	--	----------

890 Miscellaneous Expenditures				3,061.30
--------------------------------	--	--	--	----------

LEA : 124151902 Coatesville Area SD

Printed 12/14/2018 8:45:35 AM

General Fund (10)

2600 Operation and Maintenance of Plant Services

Elementary

Secondary

Federal

Total

Total Other Objects

\$6,656.30

Total 2600 Operation and Maintenance of Plant Services

\$158,345.42

\$137,738.01

\$9,979,708.91

LEA : 124151902 Coatesville Area SD

Printed 12/14/2018 8:45:35 AM

General Fund (10)

	<u>Elementary</u>	<u>Secondary</u>	<u>Federal</u>	<u>Total</u>
2610 Supervision of Operation and Maintenance of Plant Services				
100 <u>Personnel Services – Salaries</u>				
100 Personnel Services – Salaries				24,732.80
Total Personnel Services – Salaries				\$24,732.80
200 <u>Personnel Services – Employee Benefits</u>				
210 Group Insurance – Contracted Provider				76.11
220 Social Security Contributions				1,736.50
230 PSERS Retirement Contributions				7,860.05
250 Unemployment Compensation				71.02
260 Workers' Compensation				323.59
270 Group Insurance – Self-Insurance				12,888.61
Total Personnel Services – Employee Benefits				\$22,955.88
300 <u>Purchased Professional and Technical Services</u>				
390 Other Purchased Professional and Technical Services				212,048.82
Total Purchased Professional and Technical Services				\$212,048.82
400 <u>Purchased Property Services</u>				
410 Cleaning Services				7,911.54
440 Rentals				2,012.29
Total Purchased Property Services				\$9,923.83
600 <u>Supplies</u>				
610 General Supplies	22,488.31	19,561.63		42,049.94
Total Supplies	\$22,488.31	\$19,561.63		\$42,049.94
Total 2610 Supervision of Operation and Maintenance of Plant Services	\$22,488.31	\$19,561.63		\$311,711.27

General Fund (10)

	<u>Elementary</u>	<u>Secondary</u>	<u>Federal</u>	<u>Total</u>
2611 Supervision of Operation and Maintenance of Plant Services – Head of Component				
100 Personnel Services – Salaries				
100 Personnel Services – Salaries				24,732.80
Total Personnel Services – Salaries				\$24,732.80
200 Personnel Services – Employee Benefits				
210 Group Insurance – Contracted Provider				76.11
220 Social Security Contributions				1,736.50
230 PSERS Retirement Contributions				7,860.05
250 Unemployment Compensation				71.02
260 Workers' Compensation				323.59
270 Group Insurance – Self-Insurance				12,888.61
Total Personnel Services – Employee Benefits				\$22,955.88
300 Purchased Professional and Technical Services				
390 Other Purchased Professional and Technical Services				212,048.82
Total Purchased Professional and Technical Services				\$212,048.82
400 Purchased Property Services				
410 Cleaning Services				7,911.54
440 Rentals				2,012.29
Total Purchased Property Services				\$9,923.83
600 Supplies				
610 General Supplies	22,488.31	19,561.63		42,049.94
Total Supplies	\$22,488.31	\$19,561.63		\$42,049.94
Total 2611 Supervision of Operation and Maintenance of Plant Services – Head of Component	\$22,488.31	\$19,561.63		\$311,711.27

LEA : 124151902 Coatesville Area SD

Printed 12/14/2018 8:45:35 AM

General Fund (10)

2620 Operation of Buildings Services

100 Personnel Services – Salaries

	<u>Elementary</u>	<u>Secondary</u>	<u>Federal</u>	<u>Total</u>
100 Personnel Services – Salaries				1,507,540.07

Total Personnel Services – Salaries				\$1,507,540.07
--	--	--	--	-----------------------

200 Personnel Services – Employee Benefits

210 Group Insurance – Contracted Provider				5,006.77
220 Social Security Contributions				110,162.02
230 PSERS Retirement Contributions				486,422.35
250 Unemployment Compensation				1,394.90
260 Workers' Compensation				17,769.12
270 Group Insurance – Self-Insurance				627,811.78

Total Personnel Services – Employee Benefits				\$1,248,566.94
---	--	--	--	-----------------------

300 Purchased Professional and Technical Services

390 Other Purchased Professional and Technical Services				11,314.93
---	--	--	--	-----------

Total Purchased Professional and Technical Services				\$11,314.93
--	--	--	--	--------------------

400 Purchased Property Services

410 Cleaning Services				2,522,340.63
420 Utility Services				270,253.84
430 Repairs and Maintenance Services				947,287.50
440 Rentals				59,238.49
460 Extermination Services				22,352.43

Total Purchased Property Services				\$3,821,472.89
--	--	--	--	-----------------------

500 Other Purchased Services

521 Fire Insurance				93,209.00
522 Automotive Liability Insurance				16,964.00
523 General Property and Liability Insurance				177,956.00
529 Other Insurance				99,953.00

Total Other Purchased Services				\$388,082.00
---------------------------------------	--	--	--	---------------------

600 Supplies

610 General Supplies	135,691.46		118,032.29	253,723.75
620 Energy				1,556,207.76
650 Supplies & Fees – Technology Related				7,207.50

Total Supplies	\$135,691.46		\$118,032.29	\$1,817,139.01
-----------------------	---------------------	--	---------------------	-----------------------

700 Property

752 Capital Equipment – Original and Additional				38,582.78
762 Capitalized Equipment - Replacement				12,449.00

Total Property				\$51,031.78
-----------------------	--	--	--	--------------------

800 Other Objects

810 Dues and Fees				3,595.00
-------------------	--	--	--	----------

Total Other Objects				\$3,595.00
----------------------------	--	--	--	-------------------

Total 2620 Operation of Buildings Services	\$135,691.46		\$118,032.29	\$8,848,742.62
---	---------------------	--	---------------------	-----------------------

General Fund (10)

	<u>Elementary</u>	<u>Secondary</u>	<u>Federal</u>	<u>Total</u>
2630 Care and Upkeep of Grounds Services				
100 Personnel Services – Salaries				
100 Personnel Services – Salaries				100,081.76
Total Personnel Services – Salaries				\$100,081.76
200 Personnel Services – Employee Benefits				
210 Group Insurance – Contracted Provider				344.57
220 Social Security Contributions				7,187.79
230 PSERS Retirement Contributions				32,212.61
250 Unemployment Compensation				75.07
260 Workers' Compensation				1,209.26
270 Group Insurance – Self-Insurance				53,700.72
Total Personnel Services – Employee Benefits				\$94,730.02
400 Purchased Property Services				
410 Cleaning Services				211,807.50
Total Purchased Property Services				\$211,807.50
800 Other Objects				
890 Miscellaneous Expenditures				3,061.30
Total Other Objects				\$3,061.30
Total 2630 Care and Upkeep of Grounds Services				\$409,680.58

LEA : 124151902 Coatesville Area SD

Printed 12/14/2018 8:45:35 AM

General Fund (10)

	<u>Elementary</u>	<u>Secondary</u>	<u>Federal</u>	<u>Total</u>
2650 Vehicle Operation and Maintenance Services (Other Than Student Transportation Vehicles)				
400 <u>Purchased Property Services</u>				
430 Repairs and Maintenance Services				8,377.10
Total Purchased Property Services				\$8,377.10
Total 2650 Vehicle Operation and Maintenance Services (Other Than Student Transportation Vehicles)				\$8,377.10

General Fund (10)

	<u>Elementary</u>	<u>Secondary</u>	<u>Federal</u>	<u>Total</u>
2660 Safety and Security Services				
100 Personnel Services – Salaries				
100 Personnel Services – Salaries				79,780.57
Total Personnel Services – Salaries				\$79,780.57
200 Personnel Services – Employee Benefits				
210 Group Insurance – Contracted Provider				269.03
220 Social Security Contributions				5,973.45
230 PSERS Retirement Contributions				25,694.64
250 Unemployment Compensation				134.53
260 Workers' Compensation				942.01
270 Group Insurance – Self-Insurance				47,954.92
Total Personnel Services – Employee Benefits				\$80,968.58
300 Purchased Professional and Technical Services				
324 Professional Educational Services – Employee Training and Development Services				95.00
350 Security / Safety Services				239,798.45
Total Purchased Professional and Technical Services				\$239,893.45
400 Purchased Property Services				
430 Repairs and Maintenance Services				245.00
Total Purchased Property Services				\$245.00
600 Supplies				
610 General Supplies	165.65	144.09		309.74
Total Supplies	\$165.65	\$144.09		\$309.74
Total 2660 Safety and Security Services	\$165.65	\$144.09		\$401,197.34

General Fund (10)

2700 Student Transportation Services

Elementary Secondary Federal Total

100	<u>Personnel Services – Salaries</u>			
	100 Personnel Services – Salaries			119,102.85
Total Personnel Services – Salaries				\$119,102.85
200	<u>Personnel Services – Employee Benefits</u>			
	210 Group Insurance – Contracted Provider			455.64
	220 Social Security Contributions			8,782.23
	230 PSERS Retirement Contributions			38,506.95
	250 Unemployment Compensation			83.48
	260 Workers' Compensation			1,409.95
	270 Group Insurance – Self-Insurance			30,659.88
Total Personnel Services – Employee Benefits				\$79,898.13
300	<u>Purchased Professional and Technical Services</u>			
	390 Other Purchased Professional and Technical Services			1,084.03
Total Purchased Professional and Technical Services				\$1,084.03
500	<u>Other Purchased Services</u>			
	513 Contracted Carriers		86,299.85	10,023,205.19
	516 Student Transportation Services From the IU			31,369.52
	530 Communications			4,256.40
Total Other Purchased Services			\$86,299.85	\$10,058,831.11
600	<u>Supplies</u>			
	610 General Supplies			11,222.52
Total Supplies				\$11,222.52
800	<u>Other Objects</u>			
	810 Dues and Fees			222.31
Total Other Objects				\$222.31
Total 2700 Student Transportation Services			\$86,299.85	\$10,270,360.95

General Fund (10)

2710 Supervision of Student Transportation Services

Elementary

Secondary

Federal

Total

100 Personnel Services – Salaries

100 Personnel Services – Salaries

119,102.85

Total Personnel Services – Salaries

\$119,102.85

200 Personnel Services – Employee Benefits

210 Group Insurance – Contracted Provider

455.64

220 Social Security Contributions

8,782.23

230 PSERS Retirement Contributions

38,506.95

250 Unemployment Compensation

83.48

260 Workers' Compensation

1,409.95

270 Group Insurance – Self-Insurance

30,659.88

Total Personnel Services – Employee Benefits

\$79,898.13

300 Purchased Professional and Technical Services

390 Other Purchased Professional and Technical Services

1,084.03

Total Purchased Professional and Technical Services

\$1,084.03

500 Other Purchased Services

530 Communications

4,256.40

Total Other Purchased Services

\$4,256.40

600 Supplies

610 General Supplies

11,222.52

Total Supplies

\$11,222.52

800 Other Objects

810 Dues and Fees

222.31

Total Other Objects

\$222.31

Total 2710 Supervision of Student Transportation Services

\$215,786.24

General Fund (10)

2711 Supervision of Student Transportation Services – Head of Component

	<u>Elementary</u>	<u>Secondary</u>	<u>Federal</u>	<u>Total</u>
100 Personnel Services – Salaries				
100 Personnel Services – Salaries				119,102.85
Total Personnel Services – Salaries				\$119,102.85
200 Personnel Services – Employee Benefits				
210 Group Insurance – Contracted Provider				455.64
220 Social Security Contributions				8,782.23
230 PSERS Retirement Contributions				38,506.95
250 Unemployment Compensation				83.48
260 Workers' Compensation				1,409.95
270 Group Insurance – Self-Insurance				30,659.88
Total Personnel Services – Employee Benefits				\$79,898.13
300 Purchased Professional and Technical Services				
390 Other Purchased Professional and Technical Services				1,084.03
Total Purchased Professional and Technical Services				\$1,084.03
500 Other Purchased Services				
530 Communications				4,256.40
Total Other Purchased Services				\$4,256.40
600 Supplies				
610 General Supplies				11,222.52
Total Supplies				\$11,222.52
800 Other Objects				
810 Dues and Fees				222.31
Total Other Objects				\$222.31
Total 2711 Supervision of Student Transportation Services – Head of Component				\$215,786.24

LEA : 124151902 Coatesville Area SD

Printed 12/14/2018 8:45:35 AM

General Fund (10)

2720 Vehicle Operation Services

500 Other Purchased Services

513 Contracted Carriers

516 Student Transportation Services From the IU

Total Other Purchased Services

Total 2720 Vehicle Operation Services

Elementary

Secondary

Federal

Total

86,299.85

8,831,189.44

31,369.52

\$86,299.85

\$8,862,558.96

\$86,299.85

\$8,862,558.96

LEA : 124151902 Coatesville Area SD

Printed 12/14/2018 8:45:35 AM

General Fund (10)

2750 Nonpublic Transportation

Elementary

Secondary

Federal

Total

500 Other Purchased Services

513 Contracted Carriers

1,192,015.75

Total Other Purchased Services

\$1,192,015.75

Total 2750 Nonpublic Transportation

\$1,192,015.75

General Fund (10)

2800 Support Services – Central

Elementary Secondary Federal Total

100	<u>Personnel Services – Salaries</u>			
	100 Personnel Services – Salaries			360,853.49
Total Personnel Services – Salaries				\$360,853.49
200	<u>Personnel Services – Employee Benefits</u>			
	210 Group Insurance – Contracted Provider			1,383.35
	220 Social Security Contributions			27,394.79
	230 PSERS Retirement Contributions			116,029.22
	240 Tuition Reimbursement			31,176.00
	250 Unemployment Compensation			222.39
	260 Workers' Compensation			4,271.47
	270 Group Insurance – Self-Insurance			72,556.98
Total Personnel Services – Employee Benefits				\$253,034.20
300	<u>Purchased Professional and Technical Services</u>			
	324 Professional Educational Services – Employee Training and Development Services			6,295.25
	330 Other Professional Services			75,242.74
	340 Technical Services			611,138.03
Total Purchased Professional and Technical Services				\$692,676.02
400	<u>Purchased Property Services</u>			
	430 Repairs and Maintenance Services			13,456.11
	440 Rentals			399,889.71
Total Purchased Property Services				\$413,345.82
500	<u>Other Purchased Services</u>			
	530 Communications			228,359.39
	580 Travel			745.92
Total Other Purchased Services				\$229,105.31
600	<u>Supplies</u>			
	610 General Supplies			37,833.90
	650 Supplies & Fees – Technology Related			283,480.69
Total Supplies				\$321,314.59
700	<u>Property</u>			
	752 Capital Equipment – Original and Additional			9,795.50
	758 Capitalized Technology Software - Original			3,651.48
	768 Capitalized Technology Software - Replacement			36,652.52
Total Property				\$50,099.50
800	<u>Other Objects</u>			
	810 Dues and Fees			2,332.00
Total Other Objects				\$2,332.00
Total 2800 Support Services – Central				\$2,322,760.93

General Fund (10)

2830 Staff Services

	<u>Elementary</u>	<u>Secondary</u>	<u>Federal</u>	<u>Total</u>
100 Personnel Services – Salaries				
100 Personnel Services – Salaries				360,853.49
Total Personnel Services – Salaries				\$360,853.49
200 Personnel Services – Employee Benefits				
210 Group Insurance – Contracted Provider				1,383.35
220 Social Security Contributions				27,394.79
230 PSERS Retirement Contributions				116,029.22
240 Tuition Reimbursement				31,176.00
250 Unemployment Compensation				222.39
260 Workers' Compensation				4,271.47
270 Group Insurance – Self-Insurance				72,556.98
Total Personnel Services – Employee Benefits				\$253,034.20
300 Purchased Professional and Technical Services				
324 Professional Educational Services – Employee Training and Development Services				4,375.25
330 Other Professional Services				76,608.74
Total Purchased Professional and Technical Services				\$80,983.99
400 Purchased Property Services				
440 Rentals				1,615.44
Total Purchased Property Services				\$1,615.44
500 Other Purchased Services				
580 Travel				445.92
Total Other Purchased Services				\$445.92
600 Supplies				
610 General Supplies				855.41
Total Supplies				\$855.41
800 Other Objects				
810 Dues and Fees				2,282.00
Total Other Objects				\$2,282.00
Total 2830 Staff Services				\$700,070.45

General Fund (10)

2832 Recruitment and Placement Services

Elementary

Secondary

Federal

Total

300 Purchased Professional and Technical Services

324 Professional Educational Services – Employee Training and Development Services

4,375.25

330 Other Professional Services

76,608.74

Total Purchased Professional and Technical Services

\$80,983.99

400 Purchased Property Services

440 Rentals

1,615.44

Total Purchased Property Services

\$1,615.44

500 Other Purchased Services

580 Travel

445.92

Total Other Purchased Services

\$445.92

600 Supplies

610 General Supplies

855.41

Total Supplies

\$855.41

800 Other Objects

810 Dues and Fees

2,282.00

Total Other Objects

\$2,282.00

Total 2832 Recruitment and Placement Services

\$86,182.76

LEA : 124151902 Coatesville Area SD

Printed 12/14/2018 8:45:35 AM

General Fund (10)

2833 Staff Accounting Services

Elementary

Secondary

Federal

Total

100 Personnel Services – Salaries

100 Personnel Services – Salaries

360,853.49

Total Personnel Services – Salaries

\$360,853.49

200 Personnel Services – Employee Benefits

210 Group Insurance – Contracted Provider

1,383.35

220 Social Security Contributions

27,394.79

230 PSERS Retirement Contributions

116,029.22

250 Unemployment Compensation

222.39

260 Workers' Compensation

4,271.47

270 Group Insurance – Self-Insurance

72,556.98

Total Personnel Services – Employee Benefits

\$221,858.20

Total 2833 Staff Accounting Services

\$582,711.69

LEA : 124151902 Coatesville Area SD

Printed 12/14/2018 8:45:35 AM

General Fund (10)

2834 Staff Development Services – Non-Instructional, Certified Staff Only

Elementary

Secondary

Federal

Total

200 Personnel Services – Employee Benefits

240 Tuition Reimbursement

31,176.00

Total Personnel Services – Employee Benefits

\$31,176.00

Total 2834 Staff Development Services – Non-Instructional, Certified Staff Only

\$31,176.00

LEA : 124151902 Coatesville Area SD

Printed 12/14/2018 8:45:35 AM

General Fund (10)

2840 Data Processing Services

Elementary Secondary Federal Total

300 Purchased Professional and Technical Services

324 Professional Educational Services – Employee Training and Development Services				1,920.00
330 Other Professional Services				(1,366.00)
340 Technical Services				611,138.03

Total Purchased Professional and Technical Services **\$611,692.03**

400 Purchased Property Services

430 Repairs and Maintenance Services				13,456.11
440 Rentals				398,274.27

Total Purchased Property Services **\$411,730.38**

500 Other Purchased Services

530 Communications				228,359.39
580 Travel				300.00

Total Other Purchased Services **\$228,659.39**

600 Supplies

610 General Supplies				36,978.49
650 Supplies & Fees – Technology Related				283,480.69

Total Supplies **\$320,459.18**

700 Property

752 Capital Equipment – Original and Additional				9,795.50
758 Capitalized Technology Software - Original				3,651.48
768 Capitalized Technology Software - Replacement				36,652.52

Total Property **\$50,099.50**

800 Other Objects

810 Dues and Fees				50.00
-------------------	--	--	--	-------

Total Other Objects **\$50.00**

Total 2840 Data Processing Services **\$1,622,690.48**

General Fund (10)

2900 Other Support Services

Elementary

Secondary

Federal

Total

300 Purchased Professional and Technical Services

330 Other Professional Services

64,215.76

64,215.76

Total Purchased Professional and Technical Services

\$64,215.76

\$64,215.76

500 Other Purchased Services

595 IU Payments By Withholding

49,912.92

Total Other Purchased Services

\$49,912.92

Total 2900 Other Support Services

\$64,215.76

\$114,128.68

General Fund (10)

2910 Support Services Not Listed Elsewhere In the 2000 Series

Elementary

Secondary

Federal

Total

300 Purchased Professional and Technical Services

330 Other Professional Services

64,215.76

64,215.76

Total Purchased Professional and Technical Services

\$64,215.76

\$64,215.76

500 Other Purchased Services

595 IU Payments By Withholding

49,912.92

Total Other Purchased Services

\$49,912.92

Total 2910 Support Services Not Listed Elsewhere In the 2000 Series

\$64,215.76

\$114,128.68

General Fund (10)

3000 Operation of Non-Instructional Services

Total

100 Personnel Services – Salaries

100 Personnel Services – Salaries 550,716.48

Total Personnel Services – Salaries \$550,716.48

200 Personnel Services – Employee Benefits

210 Group Insurance – Contracted Provider 1,403.15

220 Social Security Contributions 41,781.20

230 PSERS Retirement Contributions 154,902.82

250 Unemployment Compensation 1,026.36

260 Workers' Compensation 6,558.59

270 Group Insurance – Self-Insurance 22,094.76

Total Personnel Services – Employee Benefits \$227,766.88

300 Purchased Professional and Technical Services

324 Professional Educational Services – Employee Training and Development Services 35.00

330 Other Professional Services 140,515.89

Total Purchased Professional and Technical Services \$140,550.89

400 Purchased Property Services

430 Repairs and Maintenance Services 22,429.61

Total Purchased Property Services \$22,429.61

500 Other Purchased Services

510 Student Transportation Services 125,342.75

520 Insurance – General 11,219.00

580 Travel 1,672.69

Total Other Purchased Services \$138,234.44

600 Supplies

610 General Supplies 93,522.40

Total Supplies \$93,522.40

700 Property

752 Capital Equipment – Original and Additional 8,072.36

756 Capitalized Technology Hardware and Equipment – Original 4,390.00

Total Property \$12,462.36

800 Other Objects

810 Dues and Fees 20,388.58

Total Other Objects \$20,388.58

Total 3000 Operation of Non-Instructional Services \$1,206,071.64

General Fund (10)

3200 Student Activities

Elementary Secondary Federal Total

100 Personnel Services – Salaries

100 Personnel Services – Salaries 547,168.98

Total Personnel Services – Salaries \$547,168.98

200 Personnel Services – Employee Benefits

210 Group Insurance – Contracted Provider 1,403.15

220 Social Security Contributions 41,514.00

230 PSERS Retirement Contributions 153,747.28

250 Unemployment Compensation 1,026.36

260 Workers' Compensation 6,526.43

270 Group Insurance – Self-Insurance 22,094.76

Total Personnel Services – Employee Benefits \$226,311.98

300 Purchased Professional and Technical Services

324 Professional Educational Services – Employee Training and Development Services 35.00

330 Other Professional Services 140,515.89

Total Purchased Professional and Technical Services \$140,550.89

400 Purchased Property Services

430 Repairs and Maintenance Services 22,429.61

Total Purchased Property Services \$22,429.61

500 Other Purchased Services

510 Student Transportation Services 125,342.75

520 Insurance – General 11,219.00

Total Other Purchased Services \$136,561.75

600 Supplies

610 General Supplies 71,356.28

Total Supplies \$71,356.28

700 Property

752 Capital Equipment – Original and Additional 8,072.36

Total Property \$8,072.36

800 Other Objects

810 Dues and Fees 20,388.58

Total Other Objects \$20,388.58

Total 3200 Student Activities \$1,172,840.43

General Fund (10)

3300 Community Services

100 Personnel Services – Salaries

100 Personnel Services – Salaries

Total Personnel Services – Salaries

200 Personnel Services – Employee Benefits

220 Social Security Contributions

230 PSERS Retirement Contributions

260 Workers’ Compensation

Total Personnel Services – Employee Benefits

500 Other Purchased Services

580 Travel

Total Other Purchased Services

600 Supplies

610 General Supplies

Total Supplies

700 Property

756 Capitalized Technology Hardware and Equipment – Original

Total Property

Total 3300 Community Services

	<u>Elementary</u>	<u>Secondary</u>	<u>Federal</u>	<u>Total</u>
			3,547.50	3,547.50
			\$3,547.50	\$3,547.50
			267.20	267.20
			1,155.54	1,155.54
			32.16	32.16
			\$1,454.90	\$1,454.90
			1,672.69	1,672.69
			\$1,672.69	\$1,672.69
			22,166.12	22,166.12
			\$22,166.12	\$22,166.12
			4,390.00	4,390.00
			\$4,390.00	\$4,390.00
			\$33,231.21	\$33,231.21

General Fund (10)

5000 Other Expenditures and Financing Uses

Total

800 Other Objects

830 Interest 6,985,796.51

Total Other Objects \$6,985,796.51

900 Other Uses of Funds

910 Redemption of Principal 7,432,063.55

990 Miscellaneous Other Uses of Funds 301,920.00

Total Other Uses of Funds \$7,733,983.55

Total 5000 Other Expenditures and Financing Uses \$14,719,780.06

LEA : 124151902 Coatesville Area SD

Printed 12/14/2018 8:45:42 AM

General Fund (10)

5100 Debt Service / Other Expenditures and Financing Uses	<u>Elementary</u>	<u>Secondary</u>	<u>Federal</u>	<u>Total</u>
800 <u>Other Objects</u>				
830 Interest				6,985,796.51
Total Other Objects				\$6,985,796.51
900 <u>Other Uses of Funds</u>				
910 Redemption of Principal				7,432,063.55
990 Miscellaneous Other Uses of Funds				301,920.00
Total Other Uses of Funds				\$7,733,983.55
Total 5100 Debt Service / Other Expenditures and Financing Uses				\$14,719,780.06

LEA : 124151902 Coatesville Area SD

Printed 12/14/2018 8:45:42 AM

General Fund (10)

5110 Debt Service

Elementary

Secondary

Federal

Total

800 Other Objects

830 Interest

6,985,796.51

Total Other Objects

\$6,985,796.51

900 Other Uses of Funds

910 Redemption of Principal

7,432,063.55

990 Miscellaneous Other Uses of Funds

301,920.00

Total Other Uses of Funds

\$7,733,983.55

Total 5110 Debt Service

\$14,719,780.06

LEA : 124151902 Coatesville Area SD

Printed 12/14/2018 8:45:37 AM

Capital Reserve Fund - § 1431 (32)

2000 Support Services

700 Property

752 Capital Equipment – Original and Additional

Total

28,200.00

Total Property

\$28,200.00

Total 2000 Support Services

\$28,200.00

LEA : 124151902 Coatesville Area SD

Printed 12/14/2018 8:45:37 AM

Capital Reserve Fund - § 1431 (32)

2700 Student Transportation Services

Elementary

Secondary

Federal

Total

700 Property

752 Capital Equipment – Original and Additional

28,200.00

Total Property

\$28,200.00

Total 2700 Student Transportation Services

\$28,200.00

LEA : 124151902 Coatesville Area SD

Printed 12/14/2018 8:45:37 AM

Capital Reserve Fund - § 1431 (32)

2790 Other Student Transportation Services

Elementary

Secondary

Federal

Total

700 Property

752 Capital Equipment – Original and Additional

28,200.00

Total Property

\$28,200.00

Total 2790 Other Student Transportation Services

\$28,200.00

LEA : 124151902 Coatesville Area SD

Printed 12/14/2018 8:45:40 AM

Capital Reserve Fund - § 1431 (32)

4000 Facilities Acquisition, Construction and Improvement Services

Total

400 Purchased Property Services

450 Construction Services

133,358.56

Total Purchased Property Services

\$133,358.56

Total 4000 Facilities Acquisition, Construction and Improvement Services

\$133,358.56

LEA : 124151902 Coatesville Area SD

Printed 12/14/2018 8:45:40 AM

Capital Reserve Fund - § 1431 (32)

4600 Existing Building Improvement Services

Elementary

Secondary

Federal

Total

400 Purchased Property Services

450 Construction Services

133,358.56

Total Purchased Property Services

\$133,358.56

Total 4600 Existing Building Improvement Services

\$133,358.56

LEA : 124151902 Coatesville Area SD

Printed 12/14/2018 8:45:41 AM

Other Capital Projects Fund (39)

4000 Facilities Acquisition, Construction and Improvement Services

Total

300 Purchased Professional and Technical Services

330 Other Professional Services

55,467.92

Total Purchased Professional and Technical Services

\$55,467.92

Total 4000 Facilities Acquisition, Construction and Improvement Services

\$55,467.92

LEA : 124151902 Coatesville Area SD

Printed 12/14/2018 8:45:41 AM

Other Capital Projects Fund (39)

4600 Existing Building Improvement Services

Elementary

Secondary

Federal

Total

300 Purchased Professional and Technical Services

330 Other Professional Services

55,467.92

Total Purchased Professional and Technical Services

\$55,467.92

Total 4600 Existing Building Improvement Services

\$55,467.92

	<u>General Fund(10)</u>	<u>Public Purpose Trust(27)</u>	<u>Other Compt Approved (28)</u>	<u>Athletic / Activity(29)</u>	<u>Capital Reserve (690. 1850)(31)</u>
1000 Instruction					
1100 Regular Programs - Elementary / Secondary	68,429,983.54				
1200 Special Programs - Elementary / Secondary	43,168,385.61				
1300 Vocational Education	3,622,405.61				
1400 Other Instructional Programs - Elementary / Secondary	173,339.58				
1500 Nonpublic School Programs	45,491.00				
1800 Pre-Kindergarten	631,187.49				
Total Instruction	\$116,070,792.83				
2000 Support Services					
2100 Support Services - Students	3,701,553.52				
2200 Support Services - Instructional Staff	3,438,439.82				
2300 Support Services - Administration	7,924,316.21				
2400 Support Services - Pupil Health	1,213,095.15				
2500 Support Services - Business	1,295,258.56				
2600 Operation and Maintenance of Plant Services	9,979,708.91				
2700 Student Transportation Services	10,270,360.95				
2800 Support Services - Central	2,322,760.93				
2900 Other Support Services	114,128.68				
Total Support Services	\$40,259,622.73				
3000 Operation of Non-Instructional Services					
3200 Student Activities	1,172,840.43				
3300 Community Services	33,231.21				
Total Operation of Non-Instructional Services	\$1,206,071.64				
4000 Facilities Acquisition, Construction and Improvement Services					
4600 Existing Building Improvement Services					
Total Facilities Acquisition, Construction and Improvement					
5000 Other Expenditures and Financing Uses					
5100 Debt Service / Other Expenditures and Financing Uses	14,719,780.06				
Total Other Expenditures and Financing Uses	\$14,719,780.06				
TOTAL ACTUAL EXPENDITURES & OTHER FINANCING USES	\$172,256,267.26				

	<u>Capital Reserve (1431)(32)</u>	<u>Other Capital Projects Fund(39)</u>	<u>Debt Service(40)</u>	<u>Permanent(90)</u>	<u>Total</u>
1000 Instruction					
1100 Regular Programs - Elementary / Secondary					68,429,983.54
1200 Special Programs - Elementary / Secondary					43,168,385.61
1300 Vocational Education					3,622,405.61
1400 Other Instructional Programs - Elementary / Secondary					173,339.58
1500 Nonpublic School Programs					45,491.00
1800 Pre-Kindergarten					631,187.49
Total Instruction					\$116,070,792.83
2000 Support Services					
2100 Support Services - Students					3,701,553.52
2200 Support Services - Instructional Staff					3,438,439.82
2300 Support Services - Administration					7,924,316.21
2400 Support Services - Pupil Health					1,213,095.15
2500 Support Services - Business					1,295,258.56
2600 Operation and Maintenance of Plant Services					9,979,708.91
2700 Student Transportation Services	28,200.00				10,298,560.95
2800 Support Services - Central					2,322,760.93
2900 Other Support Services					114,128.68
Total Support Services	\$28,200.00				\$40,287,822.73
3000 Operation of Non-Instructional Services					
3200 Student Activities					1,172,840.43
3300 Community Services					33,231.21
Total Operation of Non-Instructional Services					\$1,206,071.64
4000 Facilities Acquisition, Construction and Improvement Services					
4600 Existing Building Improvement Services	133,358.56	55,467.92			188,826.48
Total Facilities Acquisition, Construction and Improvement	\$133,358.56	\$55,467.92			\$188,826.48
5000 Other Expenditures and Financing Uses					
5100 Debt Service / Other Expenditures and Financing Uses					14,719,780.06
Total Other Expenditures and Financing Uses					\$14,719,780.06
TOTAL ACTUAL EXPENDITURES & OTHER FINANCING USES	\$161,558.56	\$55,467.92			\$172,473,293.74

LEA : 124151902 Coatesville Area SD

Printed 12/14/2018 8:45:49 AM

PSERS Salary Data (Salary Data should relate to the General Fund only)

Amount Description	Amount
Total Salary Base for salaries subject to PSERS withholding	42,966,828.00
Total Federally Funded salaries subject to PSERS withholding	1,148,431.00
	<hr/>

Title I Expenditure Data

Amount Description	Amount
Expenditures Funded with Current Title I Funds	1,419,975.93
Expenditures Funded with Carry over Title I Funds	486,009.07
	<hr/>
Total Title I Expenditure Data	\$1,905,985.00
	<hr/>

Benefits for Staff Relative to Collective Bargaining Agreements

	OBJECT	COVERED	NOT COVERED	TOTAL
10 General Fund				
	211 Medical Insurance			
	212 Dental Insurance			
	215 Eye Care Insurance			
	216 Prescription Insurance			
	271 Self-Insurance Medical Benefits	9,046,244.21		9,046,244.21
	272 Self-Insurance Dental Benefits	766,517.51		766,517.51
	275 Self-Insurance Eye Care Benefits	145,211.82		145,211.82
	276 Self-Insurance Prescription Benefits	2,060,766.19		2,060,766.19
	FUND TOTAL	\$12,018,739.73		\$12,018,739.73
50 Enterprise Fund	No Self Insurance data to report			
	211 Medical Insurance			
	212 Dental Insurance			
	215 Eye Care Insurance			
	216 Prescription Insurance			
	271 Self-Insurance Medical Benefits			
	272 Self-Insurance Dental Benefits			
	275 Self-Insurance Eye Care Benefits			
	276 Self-Insurance Prescription Benefits			
	FUND TOTAL			
60 Internal Service Fund	No Self Insurance data to report			
	211 Medical Insurance			
	212 Dental Insurance			
	215 Eye Care Insurance			
	216 Prescription Insurance			
	271 Self-Insurance Medical Benefits			
	272 Self-Insurance Dental Benefits			
	275 Self-Insurance Eye Care Benefits			
	276 Self-Insurance Prescription Benefits			
	FUND TOTAL			
Total of All Funds		\$12,018,739.73		\$12,018,739.73

LEA : 124151902 Coatesville Area SD

Printed 12/14/2018 8:45:51 AM

Function	Special Education (Prior Year)	Nonspecial Education (Prior Year)	Total (Prior Year)	Special Education (Current Year)	Nonspecial Education (Current Year)	Total (Current Year)
2120 Guidance Services	611,576.30	2,082,592.41	2,694,168.71	643,308.50	2,190,649.66	2,833,958.16
2140 Psychological Services	209,180.63	712,319.93	921,500.56	86,235.70	293,657.23	379,892.93
2150 Speech Pathology and Audiology Services						
2160 Social Work Services						
2260 Instruction and Curriculum Development Services	167,334.17	569,820.76	737,154.93	366,471.72	1,250,941.15	1,617,412.87
2350 Legal and Accounting Services	225,865.22	769,135.74	995,000.96	208,313.79	709,378.10	917,691.89
2420 Medical Services	254,821.21	867,739.21	1,122,560.42	275,372.60	937,722.55	1,213,095.15
2440 Nursing Services						
2700 Student Transportation Services	2,295,241.43	7,815,954.31	10,111,195.74	2,331,371.94	7,938,989.01	10,270,360.95
Total	\$3,764,018.96	\$12,817,562.36	\$16,581,581.32	\$3,911,074.25	\$13,321,337.70	\$17,232,411.95

(PRINCIPAL AMOUNTS ONLY)

GOVERNMENTAL FUNDS/ ACTIVITIES

	Short-Term Borrowing	General Obligation Bonds/Notes	Authority Building Obligations	Other Long-Term Debt	Other Post-Employment Benefits (OPEB)	Compensated Absences	Net Pension Liability	Total
1. Debt at Beginning of Fiscal Year		161,252,872.95			5,461,617.00	1,383,977.71	179,223,000.00	347,321,467.66
2. Additional Debt Incurred During Year			12,400,000.00		9,417,419.00			21,817,419.00
3. Retirements and Repayments		7,432,063.55				67,276.28	8,167,000.00	15,666,339.83
4. Debt at End of Fiscal Year		153,820,809.40	12,400,000.00		14,879,036.00	1,316,701.43	171,056,000.00	353,472,546.83
5. Accreted Interest at End Of Fiscal Year		2,939,190.60						2,939,190.60
6. Total Debt and Accreted Interest		156,760,000.00	12,400,000.00		14,879,036.00	1,316,701.43	171,056,000.00	356,411,737.43
7. Current Portion P&I - Due within 1 year		15,448,976.26	600,934.38					16,049,910.64
8. Interest Paid during current fiscal year		6,934,125.13						6,934,125.13

(PRINCIPAL AMOUNTS ONLY)

PROPRIETARY FUNDS

	Short-Term Borrowing	General Obligation Bonds/Notes	Authority Building Obligations	Other Long-Term Debt	Other Post-Employment Benefits (OPEB)	Compensated Absences	Net Pension Liability	Total
1. Debt at Beginning of Fiscal Year					85,694.00	69,284.00	3,493,000.00	3,647,978.00
2. Additional Debt Incurred During Year					77,726.00			77,726.00
3. Retirements and Repayments						39,795.00	159,000.00	198,795.00
4. Debt at End of Fiscal Year					163,420.00	29,489.00	3,334,000.00	3,526,909.00
5. Accreted Interest at End Of Fiscal Year								
6. Total Debt and Accreted Interest					163,420.00	29,489.00	3,334,000.00	3,526,909.00
7. Current Portion P&I - Due within 1 year								
8. Interest Paid during current fiscal year								

Total Principal and Interest Payments Made by Your School - All Funds

Function	Fund		Principal (910)	Principal (920)	Interest (830)	Total (Principal +Interest)	Misc Other Uses (990)
5110	10	General Fund	7,432,063.55		6,985,796.51	14,417,860.06	301,920.00
5110	20	Special Revenue Funds					
5110	30	Capital Projects Funds					
5110	40	Debt Service Fund					
5110	90	Permanent Fund					
5120	10	General Fund					
5120	20	Special Revenue Funds					
5120	30	Capital Projects Funds					
5120	40	Debt Service Fund					

Total Debt Payments - Governmental Funds			\$7,432,063.55		\$6,985,796.51	\$14,417,860.06	\$301,920.00
---	--	--	-----------------------	--	-----------------------	------------------------	---------------------

Function	Fund		Principal (910)	Principal (920)	Interest (830)	Total (Principal +Interest)
5110	50	Enterprise Fund				
5110	60	Internal Service Fund				
5120	50	Enterprise Fund				
5120	60	Internal Service Fund				

Total Debt Payments - Proprietary Funds						
--	--	--	--	--	--	--

LEA : 124151902 Coatesville Area SD

Printed 12/14/2018 8:45:52 AM

Debt Details
Governmental Funds/ Activities

Debt Category	Debt Issue Date (MM/YYYY)	Principal Amounts Only			Debt at End of Fiscal Year	Current Portion Due Within One Year (Principal and Interest)	Interest Paid During Fiscal Year
		Debt at Beginning of Fiscal Year	Additions	Reductions / Repayments			
General Obligation Bonds/Notes – CIB	03/2017	57,755,000.00			57,755,000.00	2,846,400.00	2,390,817.92
General Obligation Bonds/Notes – CIB	04/2014	8,740,000.00		5,000.00	8,735,000.00	1,153,775.00	341,200.00
General Obligation Bonds/Notes – CIB	04/2014	1,725,000.00		1,725,000.00			19,872.00
General Obligation Bonds/Notes – CIB	07/2010	53,390,000.00		10,000.00	53,380,000.00	2,410,368.76	2,405,631.26
General Obligation Bonds/Notes – CIB	08/2009	21,965,000.00		5,000.00	21,960,000.00	1,063,432.50	1,058,667.50
General Obligation Bonds/Notes – CAB	08/2013	17,677,872.95		5,687,063.55	11,990,809.40	7,975,000.00	717,936.45
Authority Building Obligations – CIB	06/2018		12,400,000.00		12,400,000.00	600,934.38	
Compensated Absences		1,383,977.71		67,276.28	1,316,701.43		
Other Post-Employment Benefits (OPEB)		5,461,617.00	9,417,419.00		14,879,036.00		
Net Pension Liability		179,223,000.00		8,167,000.00	171,056,000.00		
Totals for Debt Entered:		\$347,321,467.66	\$21,817,419.00	\$15,666,339.83	\$353,472,546.83	\$16,049,910.64	\$6,934,125.13

Bond Details
Proprietary Funds

Debt Category	Debt Issue Date (MM/YYYY)	Principal Amounts Only			Debt at End of Fiscal Year	Current Portion Due Within One Year (Principal and Interest)	Interest Paid During Fiscal Year
		Debt at Beginning of Fiscal Year	Additions	Reductions / Repayments			
Compensated Absences		69,284.00		39,795.00	29,489.00		
Other Post-Employment Benefits (OPEB)		85,694.00	77,726.00		163,420.00		
Net Pension Liability		3,493,000.00		159,000.00	3,334,000.00		
Totals for Debt Entered:		\$3,647,978.00	\$77,726.00	\$198,795.00	\$3,526,909.00		

LEA : 124151902 Coatesville Area SD

Printed 12/14/2018 8:45:52 AM

Accreted Interest Detail
Governmental Funds/ Activities

Debt Category	Debt Issue Date (MM/YYYY)	Beginning Accreted Interest	Additions	Reductions	Ending Accreted Interest	Ending bond Principal	Ending Principal Plus Accreted Interest
General Obligation Bonds/Notes – CAB	08/2013	3,657,127.05		717,936.45	2,939,190.60	11,990,809.40	14,930,000.00
Totals for Debt Entered:		\$3,657,127.05		\$717,936.45	\$2,939,190.60	\$11,990,809.40	\$14,930,000.00

General Fund (10)

Section 1: Tuition/Purchased Services as Reported within Expenditure Detail

	Amount
Tuition Reported in General Fund Expenditures 1000-560	43,415,929.91
Purchased Services in General Fund Expenditures 1000-594 and 1000-597	

Section 1 Total	\$43,415,929.91
------------------------	------------------------

Section 2: Tuition Paid to Institution Types During Fiscal Year

	Tuition Paid For Nonspecial Education	Tuition Paid For Special Education	Total
1 1306 Institutions			
2 Institutionalized Children's Programs			
3 Juveniles Incarcerated in Adult Facilities			
4 Residential Treatment Facilities			
5 Other Local Education Agencies	103,128.85	41,729.37	144,858.22
6 Brick and Mortar Charter Schools	17,834,493.75	13,703,447.15	31,537,940.90
7 Cyber Charter Schools	3,722,770.46	1,196,023.52	4,918,793.98
8 Career and Technology Centers	2,921,008.00		2,921,008.00
9 Approved Private Schools		3,545,191.96	3,545,191.96
10 PA Chartered Schools for the Deaf and Blind			
11 Private Residential Rehabilitative Institutions	132,235.85	15,360.00	147,595.85
12 Juvenile Detention Centers			
13 Special Program Jointures			
14 Other Tuition Not Included Elsewhere In This Section	200,541.00		200,541.00

Section 2 Total	\$24,914,177.91	\$18,501,752.00	\$43,415,929.91
------------------------	------------------------	------------------------	------------------------

LEA : 124151902 Coatesville Area SD

Printed 12/14/2018 8:45:54 AM

Food Service / Cafeteria Operations Fund (51)

	<u>Total</u>
1000 Instruction	
100 Personnel Services – Salaries	
100 Personnel Services – Salaries	891,157.00
Total Personnel Services – Salaries	\$891,157.00
200 Personnel Services – Employee Benefits	
210 Group Insurance – Contracted Provider	646.92
220 Social Security Contributions	66,950.26
230 PSERS Retirement Contributions	299,304.29
250 Unemployment Compensation	4,106.72
260 Workers' Compensation	16,020.33
270 Group Insurance – Self-Insurance	248,700.48
280 Other Post-Employment Benefits (OPEB)	(5,785.00)
299 All Other Employee Benefits	53,000.00
Total Personnel Services – Employee Benefits	\$682,944.00
300 Purchased Professional and Technical Services	
324 Professional Educational Services – Employee Training and Development Services	1,399.93
340 Technical Services	5,214.75
390 Other Purchased Professional and Technical Services	2,200.32
Total Purchased Professional and Technical Services	\$8,815.00
400 Purchased Property Services	
430 Repairs and Maintenance Services	26,149.65
440 Rentals	5,842.35
Total Purchased Property Services	\$31,992.00
500 Other Purchased Services	
530 Communications	166.19
580 Travel	1,300.81
Total Other Purchased Services	\$1,467.00
600 Supplies	
610 General Supplies	103,785.32
630 Food	1,498,876.68
Total Supplies	\$1,602,662.00
700 Property	
740 Depreciation	22,045.00
Total Property	\$22,045.00
800 Other Objects	
810 Dues and Fees	831.00
Total Other Objects	\$831.00
Total 1000 Instruction	\$3,241,913.00

LEA : 124151902 Coatesville Area SD

Printed 12/14/2018 8:45:54 AM

Food Service / Cafeteria Operations Fund (51)

1100 Regular Programs – Elementary / Secondary

Elementary Secondary Federal Total

100 Personnel Services – Salaries				
100 Personnel Services – Salaries				891,157.00
Total Personnel Services – Salaries				\$891,157.00
200 Personnel Services – Employee Benefits				
210 Group Insurance – Contracted Provider				646.92
220 Social Security Contributions				66,950.26
230 PSERS Retirement Contributions				299,304.29
250 Unemployment Compensation				4,106.72
260 Workers' Compensation				16,020.33
270 Group Insurance – Self-Insurance				248,700.48
280 Other Post-Employment Benefits (OPEB)				(5,785.00)
299 All Other Employee Benefits				53,000.00
Total Personnel Services – Employee Benefits				\$682,944.00
300 Purchased Professional and Technical Services				
324 Professional Educational Services – Employee Training and Development Services				1,399.93
340 Technical Services				5,214.75
390 Other Purchased Professional and Technical Services				2,200.32
Total Purchased Professional and Technical Services				\$8,815.00
400 Purchased Property Services				
430 Repairs and Maintenance Services				26,149.65
440 Rentals				5,842.35
Total Purchased Property Services				\$31,992.00
500 Other Purchased Services				
530 Communications				166.19
580 Travel				1,300.81
Total Other Purchased Services				\$1,467.00
600 Supplies				
610 General Supplies				103,785.32
630 Food				1,498,876.68
Total Supplies				\$1,602,662.00
700 Property				
740 Depreciation				22,045.00
Total Property				\$22,045.00
800 Other Objects				
810 Dues and Fees				831.00
Total Other Objects				\$831.00
Total 1100 Regular Programs – Elementary / Secondary				\$3,241,913.00

Food Service / Cafeteria Operations Fund (51)

1110 Regular Programs

	<u>Elementary</u>	<u>Secondary</u>	<u>Federal</u>	<u>Total</u>
100 Personnel Services – Salaries				
100 Personnel Services – Salaries				891,157.00
Total Personnel Services – Salaries				\$891,157.00
200 Personnel Services – Employee Benefits				
210 Group Insurance – Contracted Provider				646.92
220 Social Security Contributions				66,950.26
230 PSERS Retirement Contributions				299,304.29
250 Unemployment Compensation				4,106.72
260 Workers' Compensation				16,020.33
270 Group Insurance – Self-Insurance				248,700.48
280 Other Post-Employment Benefits (OPEB)				(5,785.00)
299 All Other Employee Benefits				53,000.00
Total Personnel Services – Employee Benefits				\$682,944.00
300 Purchased Professional and Technical Services				
324 Professional Educational Services – Employee Training and Development Services				1,399.93
340 Technical Services				5,214.75
390 Other Purchased Professional and Technical Services				2,200.32
Total Purchased Professional and Technical Services				\$8,815.00
400 Purchased Property Services				
430 Repairs and Maintenance Services				26,149.65
440 Rentals				5,842.35
Total Purchased Property Services				\$31,992.00
500 Other Purchased Services				
530 Communications				166.19
580 Travel				1,300.81
Total Other Purchased Services				\$1,467.00
600 Supplies				
610 General Supplies				103,785.32
630 Food				1,498,876.68
Total Supplies				\$1,602,662.00
700 Property				
740 Depreciation				22,045.00
Total Property				\$22,045.00
800 Other Objects				
810 Dues and Fees				831.00
Total Other Objects				\$831.00
Total 1110 Regular Programs				\$3,241,913.00

	<u>Food Service(51)</u>	<u>Child Care Operations(52)</u>	<u>Other Enterprise(58)</u>	<u>Internal Service(60)</u>	<u>Total</u>
1000 Instruction					
1100 Regular Programs - Elementary / Secondary		3,241,913.00			3,241,913.00
Total Instruction		\$3,241,913.00			\$3,241,913.00
TOTAL ACTUAL EXPENDITURES & OTHER FINANCING USES		\$3,241,913.00			\$3,241,913.00